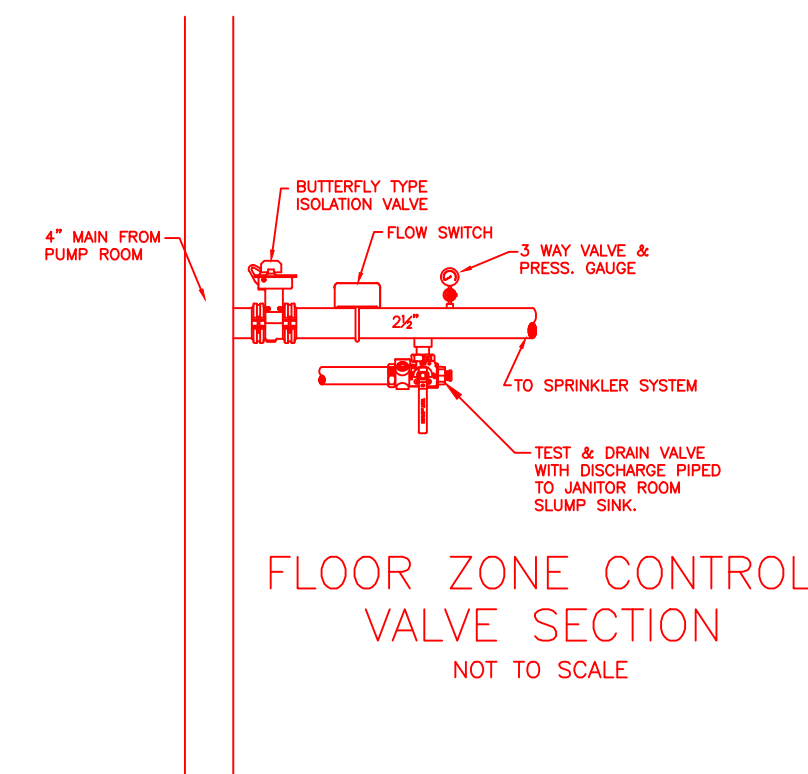
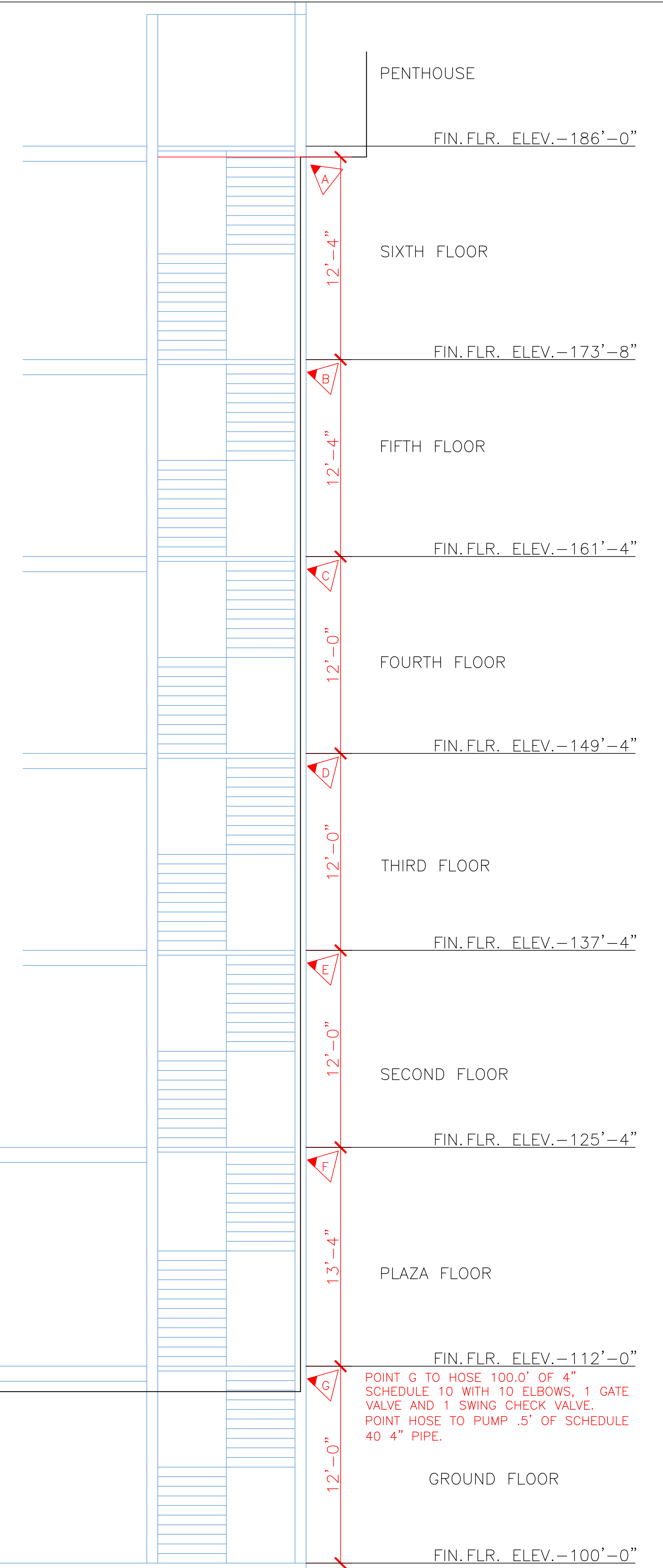


PARTIAL BUILDING SECTION
SCALE: 1/4" = 1'-0"



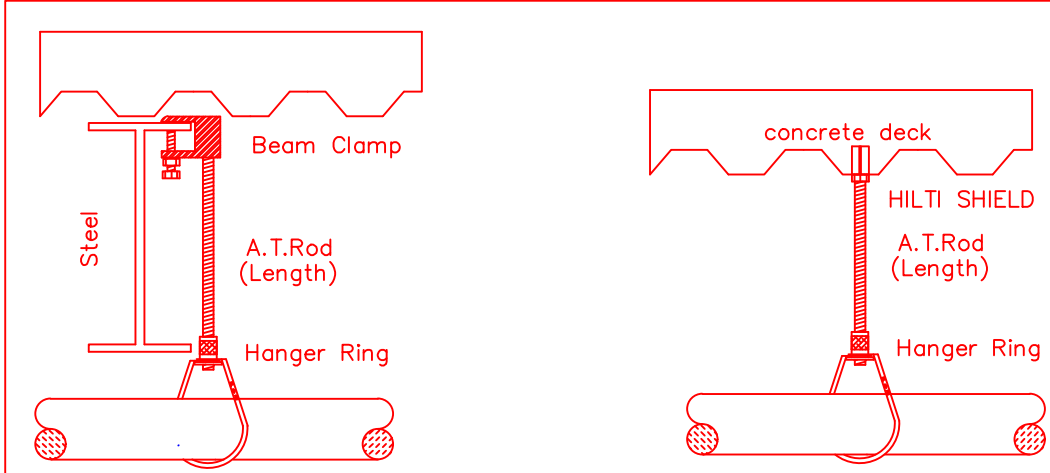
GENERAL NOTES:

- IT IS THE BUILDING OWNERS RESPONSIBILITY TO PROVIDE ADEQUATE HEAT FOR ALL AREAS IN THE BUILDING PROTECTED BY WET SPRINKLER SYSTEMS AND FOR ALL WATER FILLED SUPPLY PIPES, VALVES AND SYSTEM RISERS IN ALL DRY PIPE SPRINKLER SYSTEMS.
- ALL NEW PIPING IS TO BE HYDROSTATICALLY TESTED AT NOT LESS THAN 200 PSI FOR 2 HOURS, OR AT 50 PSI IN EXCESS OF THE MAXIMUM PRESSURE, WHEN THE MAXIMUM PRESSURE TO BE MAINTAINED IS IN EXCESS OF 150 PSI. (PER NFPA 13)
- WHETHER OR NOT INDICATED ON DRAWINGS, THE FOLLOWING ITEMS ARE TO BE PROVIDED:
 - SPARE HEAD CABINET WITH WRENCH (NFPA 13).
 - PROVISIONS FOR FLUSHING CONNECTIONS AND DRAINING OF ALL PIPE.
 - INSPECTORS TEST CONNECTION SHALL BE PROVIDED FOR EACH SYSTEM
 - A) FOR WET PIPE SYSTEMS SEE NFPA 13)
 - WET PIPE SYSTEMS SHALL BE PROVIDED WITH A RELIEF VALVE NOT LESS THAN 1/2" IN SIZE. (NFPA 13).
- CPVC PIPING WILL BE USED ON THIS PROJECT DUE TO SUSPENDED CEILING NOT BEING REMOVED. EXISTING PIPING IS BLACK IRON AND THE ZONE CONTROL PIPING OFF THE RISERS WILL BE SCHEDULE 10 STEEL WITH GROOVED COUPLINGS AND ANVIL MECHANICAL TYPE FITTINGS.
- ALL MECHANICAL TRADES ARE TO COORDINATE THEIR WORK WITH SPRINKLER WORK AS SHOWN ON THESE PLANS.
- ALL HANGERS AND LOCATIONS ARE TO BE IN ACCORDANCE WITH N.F.P.A. 13.
- ALL SPRINKLER HEADS IN SUSPENDED CEILING TILES ARE TO BE LOCATED IN THE CENTER OF THE ACOUSTICAL CEILING PANEL.
- ALL PIPING IS TO BE PITCHED IN ACCORDANCE WITH N.F.P.A. 13.
- HYDRAULIC DATA REFERENCE POINTS: (25) BELOW DECK (12")
- CENTER LINE OF PIPE ABOVE FINISH FLOOR (12'-0")
- PROTECTIVE CAPS ARE TO REMAIN ON THE SPRINKLER HEADS UNTIL AFTER CEILINGS ARE INSTALLED.
- WORK IS LIMITED TO THE WORK SHOWN ON THESE DOCUMENTS.
- WATER SUPPLY IS CITY WATER WITH AN EXISTING FIRE PUMP.
- FIRE PUMP IS A PEERLESS PUMP, MODEL 4-401-11A. RATED CAPACITY 500 GPM @ 40 PSI.



EXISTING MAIN & STAND PIPE RISER SECTION
NOT TO SCALE

- Type of Hazard: LIGHT
- Deflector Distance: PER SPEC
- Pipe Type Used: BLK_SCH_10/CPVC
- Sprinkler Area: PER SPEC
- Type of Construction: NON-COMBUSTIBLE
- Maximum Spacing Allowed: PER NFPA 13
- PIPE SIZING METHOD: PIPE SCHEDULE HYDRAULICALLY CALCULATED
- ALL HANGERS AND LOCATIONS TO BE IN ACCORDANCE WITH N.F.P.A. PAMPHLET NO. 13
- HIGH DEGREE TEMPERATURE SPRINKLER HEADS TO BE INSTALLED IN ACCORDANCE WITH N.F.P.A. PAMPHLET NO. 13



HANGER DETAILS
N.F.P.A.

HANGERS	
AS SHOWN IN DETAIL	

ABBREVIATIONS	
B	Bottom of Beam
D	Bottom of Deck
P	Bottom of Pipe
HV	Head Valve
N & C	Nipple and Cap
NIC	Net in Contract
NIS	Net to Scale
OB	Open Bar Joints
PRV	Pressure Red Valve
RM	Roof Manifold
SP	Standpipe
TDB	Top of Beam
TOP	Top of Pipe
TOP	Top of Steel
UN	Unless Otherwise Noted
CL	Centerline
NAS	No Automatic Sprinklers
OTA	Open to Above

CONTRACT RESPONSIBILITIES		
ITEM	FFC	OTHERS
STREET CORR.		
UGG MAN		
EXCAVATION		
FLUSHING		
WIRING		
PAINTING		
TAMPER SWITCHES		
FLOW SWITCHES		
STREET CORR.		

SPRINKLER HEAD LEGEND										
SYMBOL	MAKE	MODEL	SIN	FINISH	TYPE	TEMP	NPT	ORIFICE	K-FACTOR	TOTAL
	RELIABLE	F1FR 56	RA1425	BRONZE	UPRIGHT	200° F	1/2"	1/2"	5.6	2
	RELIABLE	F1FR 56	RA1414	WHITE	SDM-REC PENDEN	155° F	1/2"	1/2"	5.6	31
	RELIABLE	F1FR 56	R4842	WHITE	SDM-REC PENDEN	155° F	3/4"	17/32"	8.0	32
TOTAL										65

SUBMITTALS	
SENT TO	DATE RECEIVED
I.S.O.	
F.M.	
L.M.	
I.R.I.	
L.A.	
STATE FIRE	
LOCAL FIRE	
LOCAL WATER	
OWNER	

LICENSE# 093 R.M.S.# 442 PERMIT # ????

P.O. BOX 1285 LEWISTON MAINE 04243-1285

THREE CANAL PLAZA 2ND FLOOR MIDDLE STREET PORTLAND, ME 04101			
CONTRACT WITH	NO.	DATE	DESCRIPTION
MONAGHAN			

REVISIONS	
NO.	DATE

DATE: 12/15/2016
TOTAL SPKRS ON JOB: 65
SHEET# 1 of 2
JOB# 16162

SUBMITTAL COPY

2ND FLOOR

HYDRAULIC DATA NAMEPLATE

This Building is protected by a hydraulically designed Automatic Sprinkler System

Location AREA-1

No. of Sprinkler 6

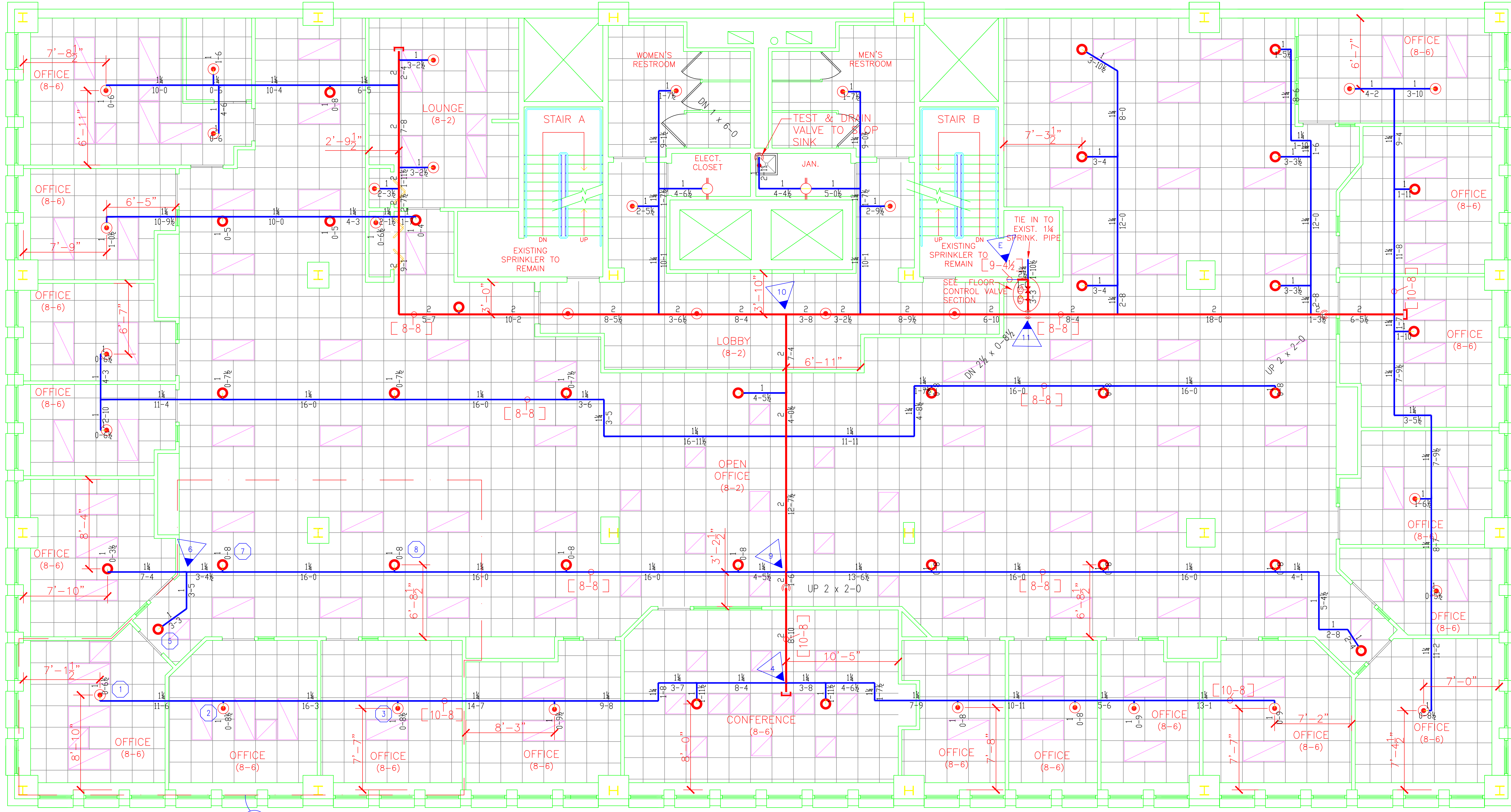
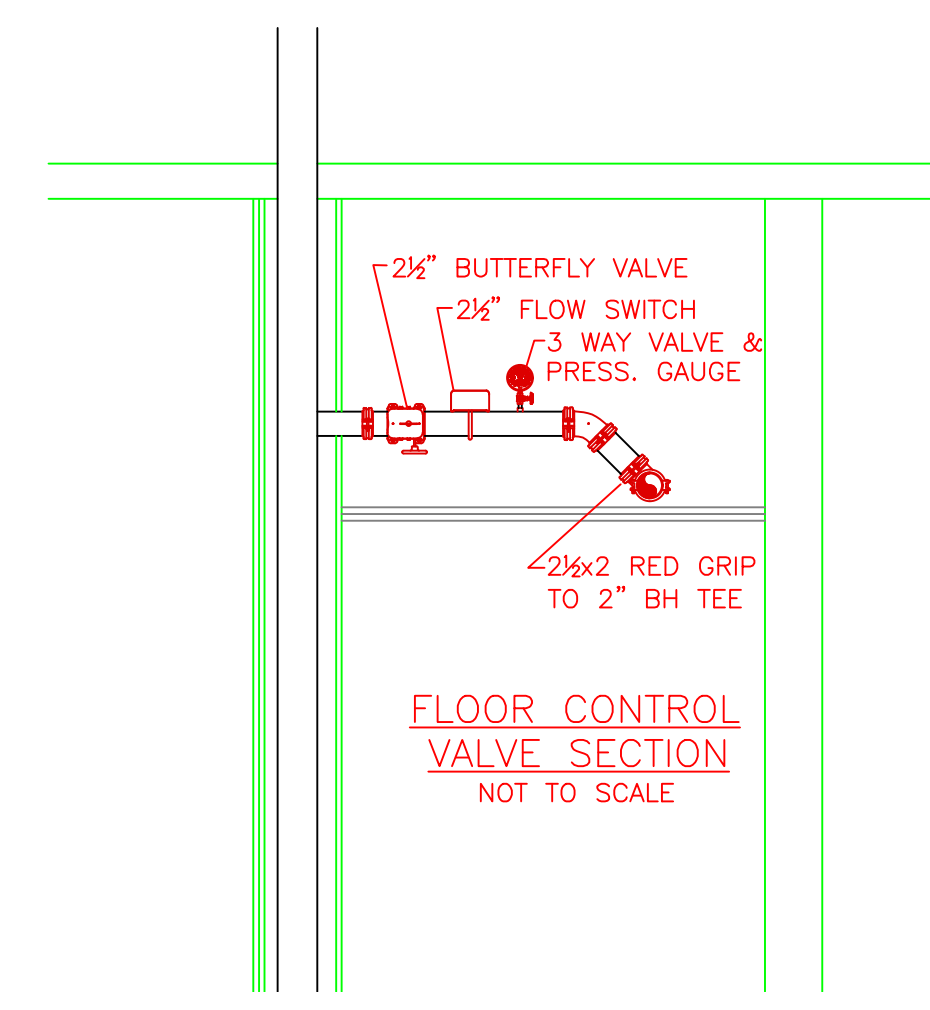
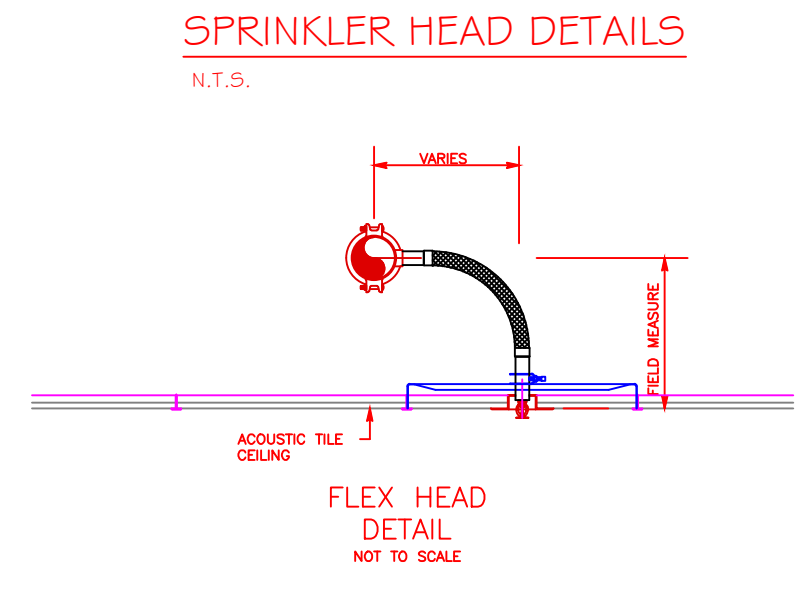
Basis of design

- Density .10 gpm/ft²
- Design area of discharge 900 ft²

System Demand

- Water Flow Rate
- Pump 284.34 gpm
- Residual Pressure
- Base/Pump 90.01 psi
- CUSHION = 47.39 psi

MOST REMOTE



AREA 1
.10/900
+100

SECOND FLOOR SPRINKLER PLAN

SCALE: 1/4" = 1'-0"
FINISH FLOOR ELEV. 125.33'

--- EXISTING PIPE TO REMAIN

MAX SPACING ON EXTENDED COVERAGE PENDANTS IS 18' x 18', 9'-0" OFF WALL.

SPRINKLER HEAD LEGEND

SYMBOL	MAKE	MODEL	SIN	FINISH	TYPE	TEMP	NPT	ORIFICE	K-FACTOR	TOTAL
	RELIABLE	F1FR 56	RA1425	BRONZE	UPRIGHT	200° F	1/2"	1/2"	5.6	2
	RELIABLE	F1FR 56	RA1414	WHITE	UPRIGHT PENDENT	155° F	1/2"	1/2"	5.6	31
	RELIABLE	F1FR 56	R4842	WHITE	UPRIGHT PENDENT	155° F	3/4"	17/32"	8.0	32
TOTAL										65

SPRINKLER SYSTEMS INC.

P.O. BOX 1285
LEWISTON, MAINE
04243-1285

SUBMITTAL COPY

THREE CANAL PLAZA
2ND FLOOR
MIDDLE STREET
PORTLAND, ME 04101
MONAGHAN

CONTRACT WITH: MONAGHAN

SYSTEM TYPE: WET DRY DELUGE PREACTION ME LIFE HYDRO-PRO

NO. DATE DESCRIPTION

REVISIONS

DATE: 12/15/2016

TOTAL SPRINKERS ON JOB: 65

SHEET # 2 of 2

JOB # 16162

SCALE: AS NOTED

DRAWN BY: RDO

CHECKED BY: CDS