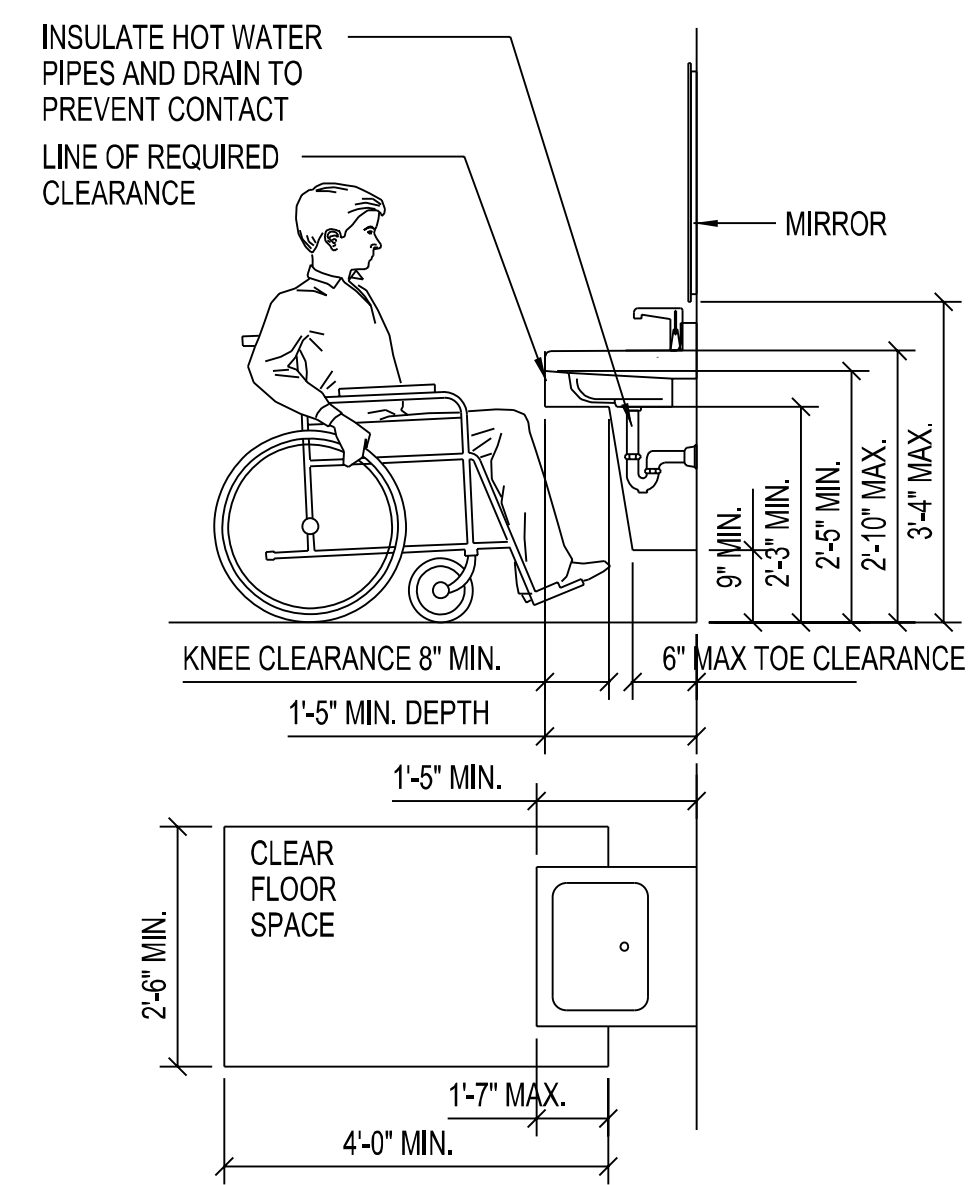
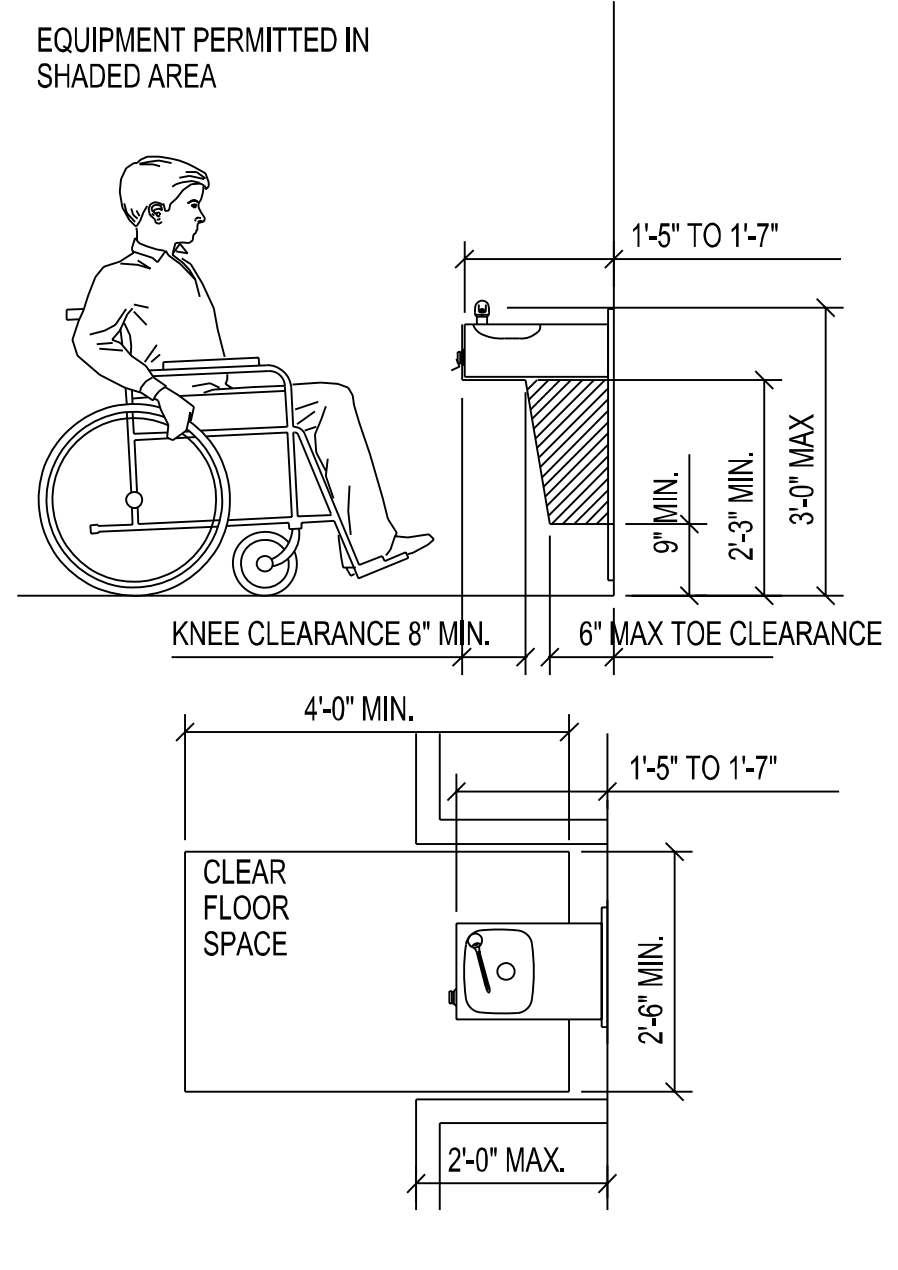


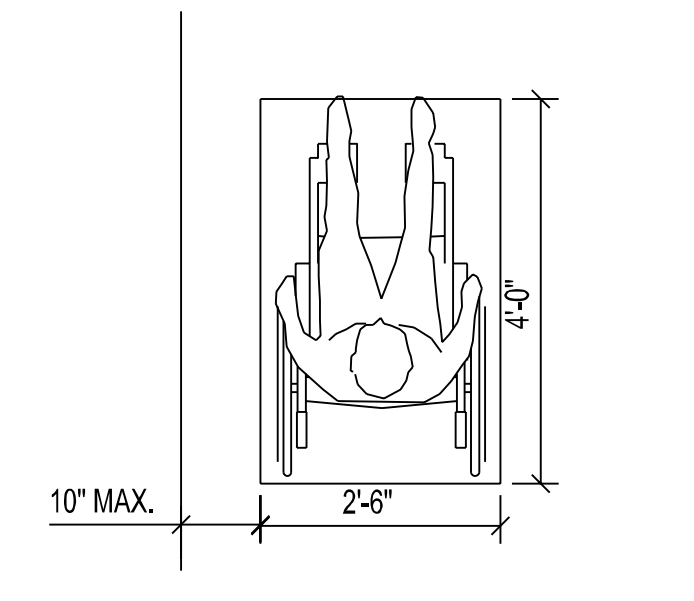
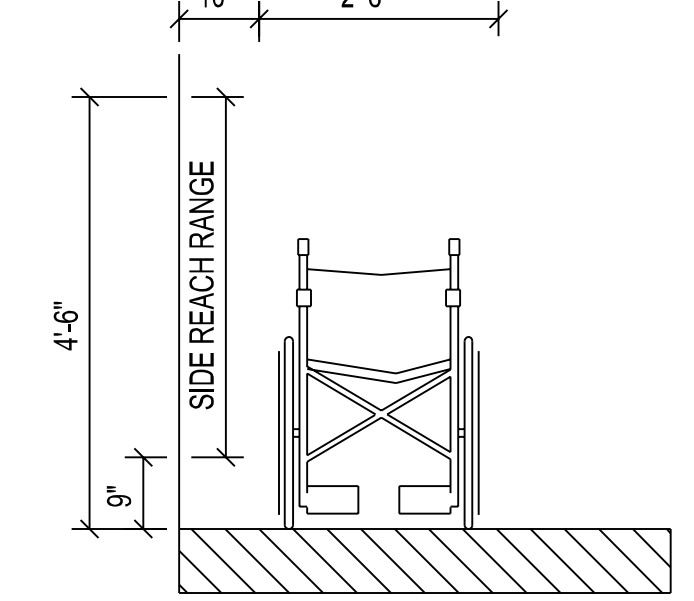
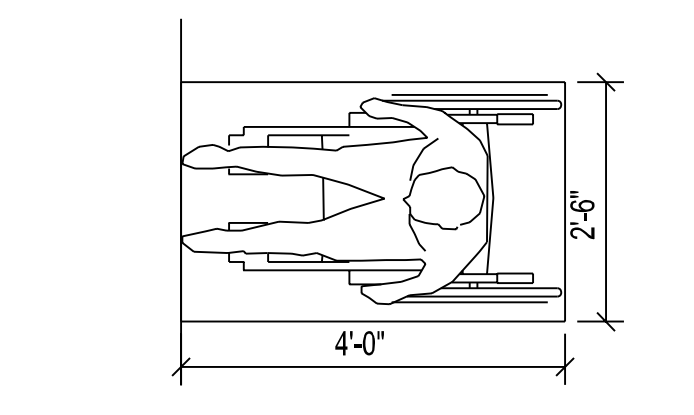
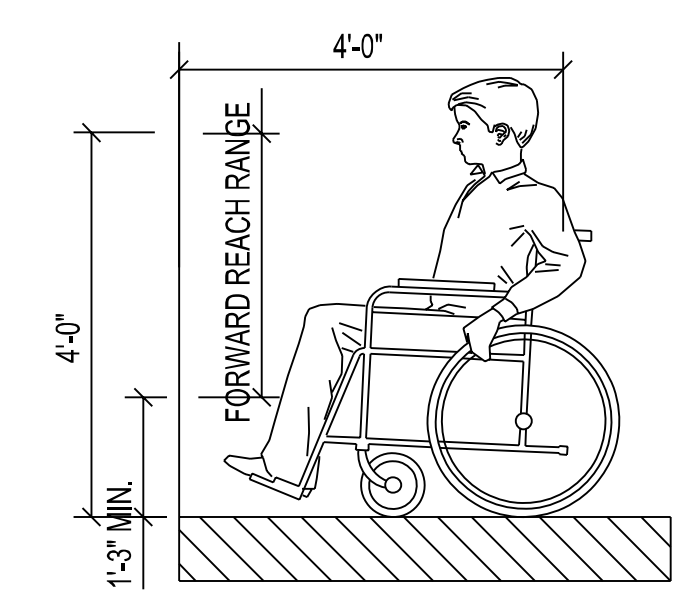
TYPICAL ACCESSIBILITY INFORMATION



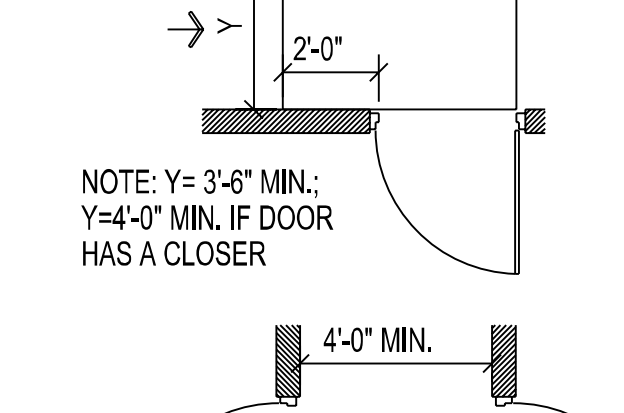
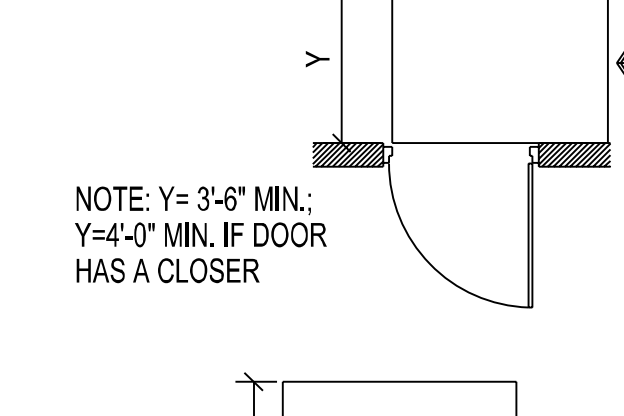
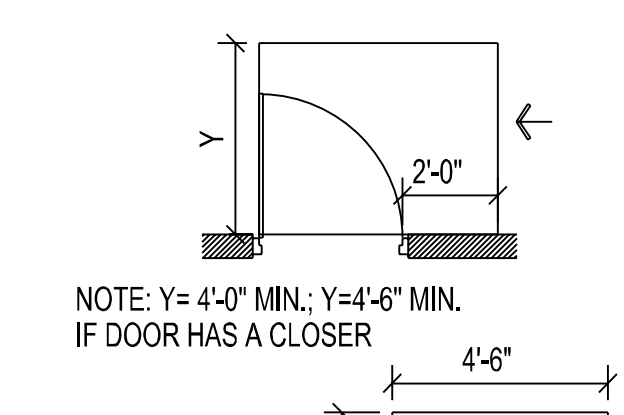
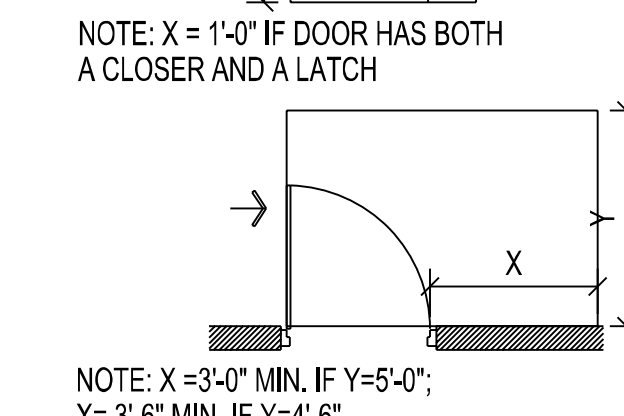
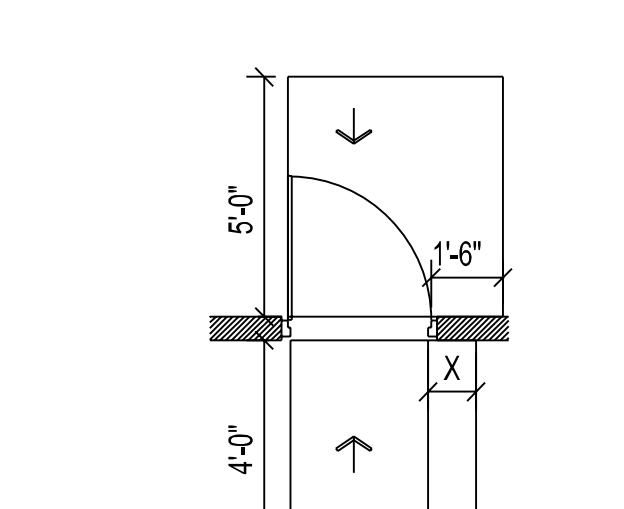
SINK OR VANITY
SCALE: NOT TO SCALE 9



DRINKING FOUNTAIN
SCALE: NOT TO SCALE 10



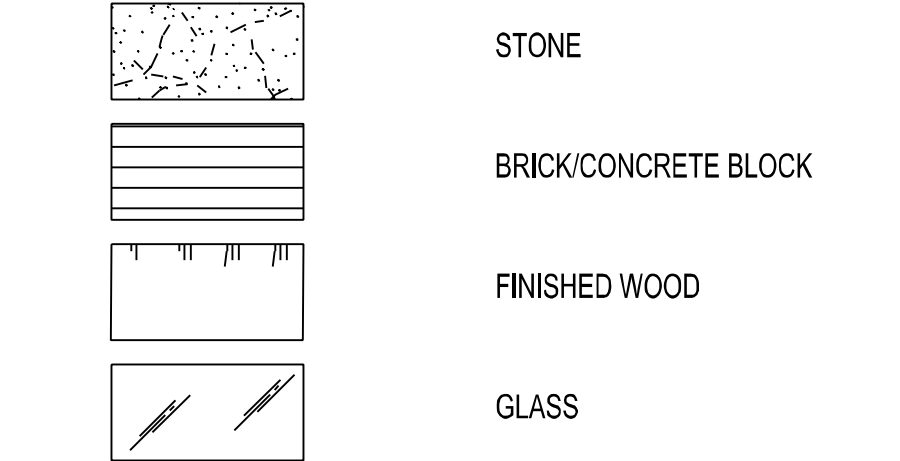
REACH RANGES
SCALE: NOT TO SCALE 6



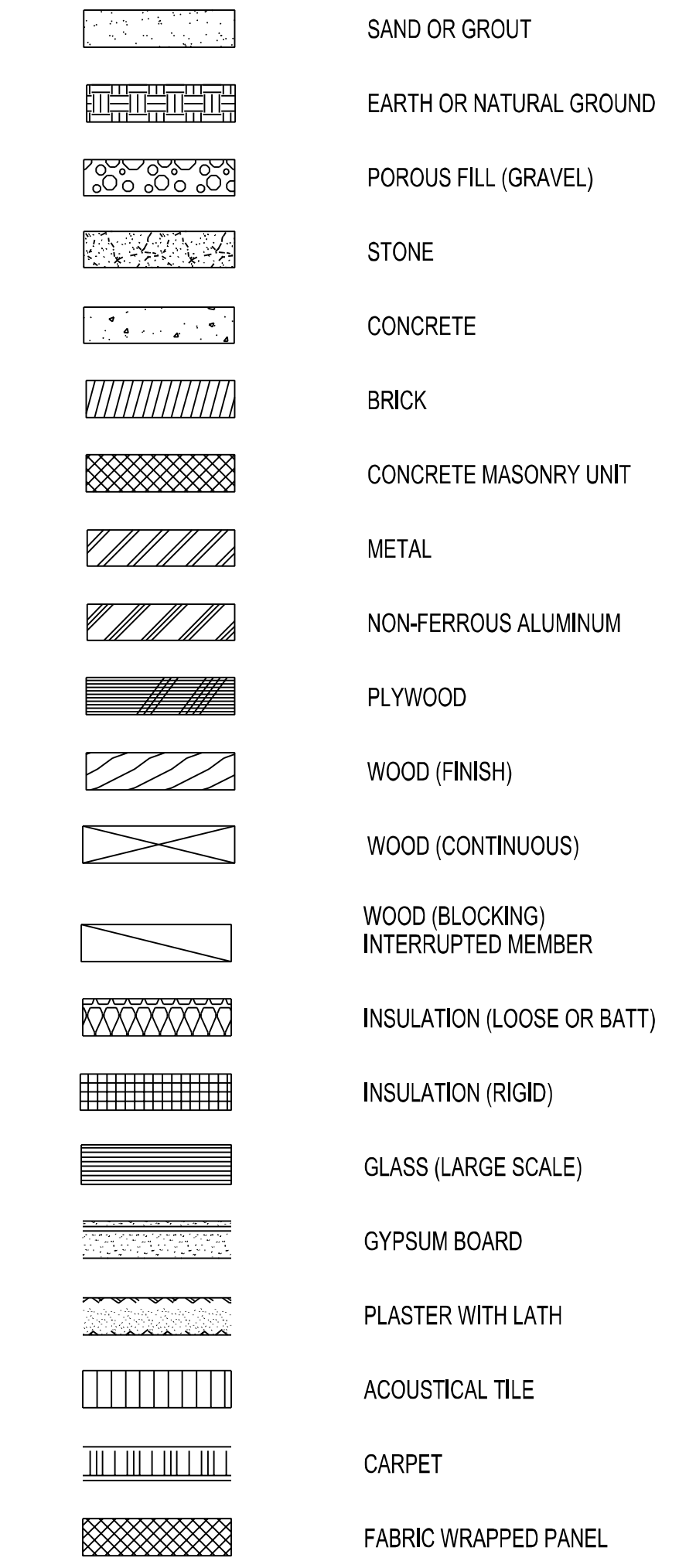
CLEARANCES
SCALE: NOT TO SCALE 2

GRAPHIC SYMBOLS (CONT.)

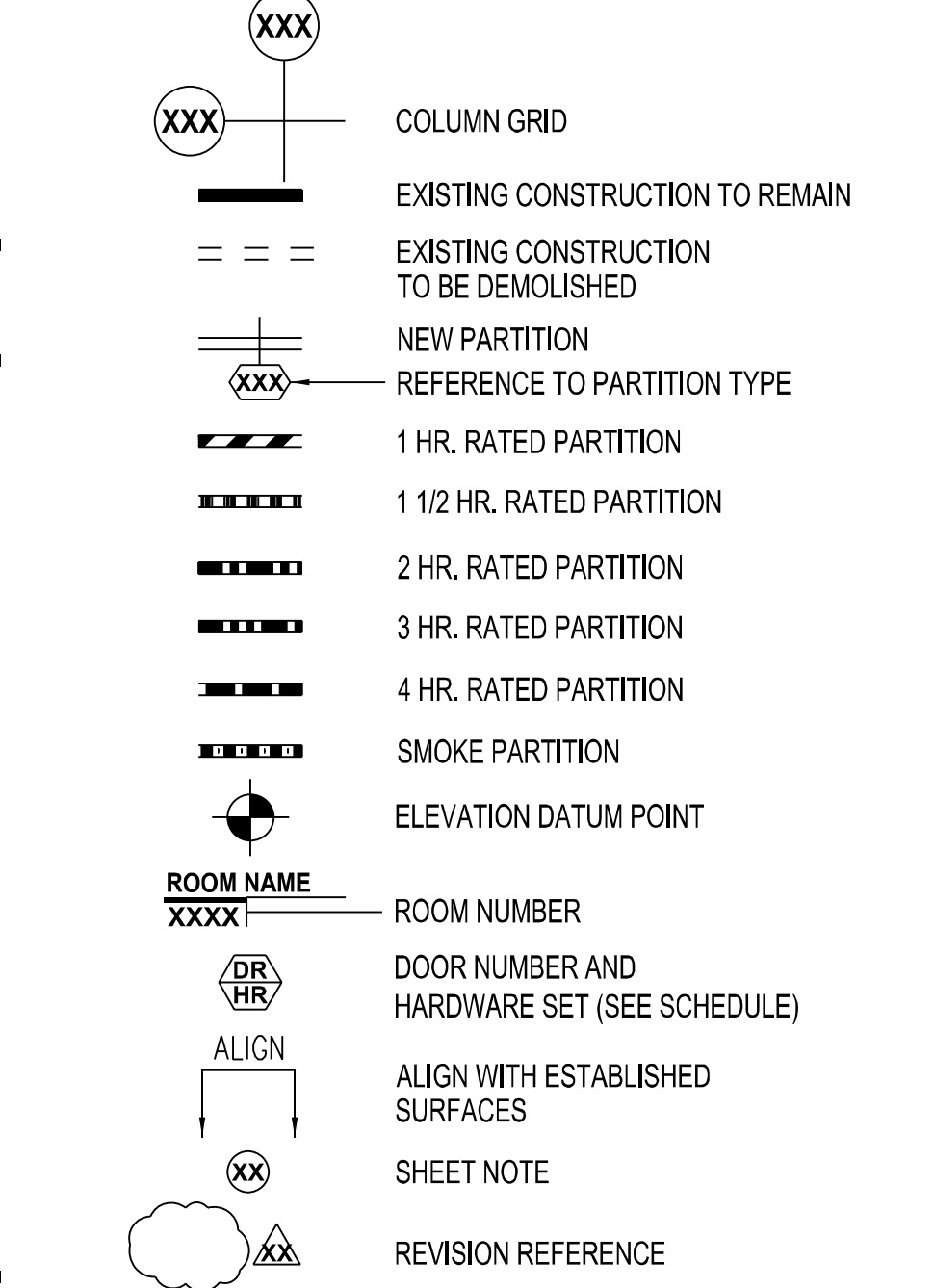
ELEVATION INDICATIONS



SECTION INDICATIONS

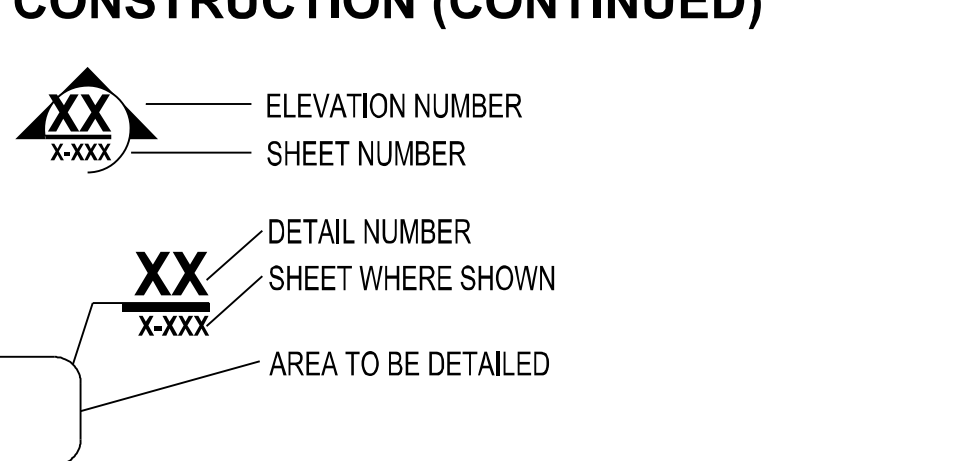


CONSTRUCTION

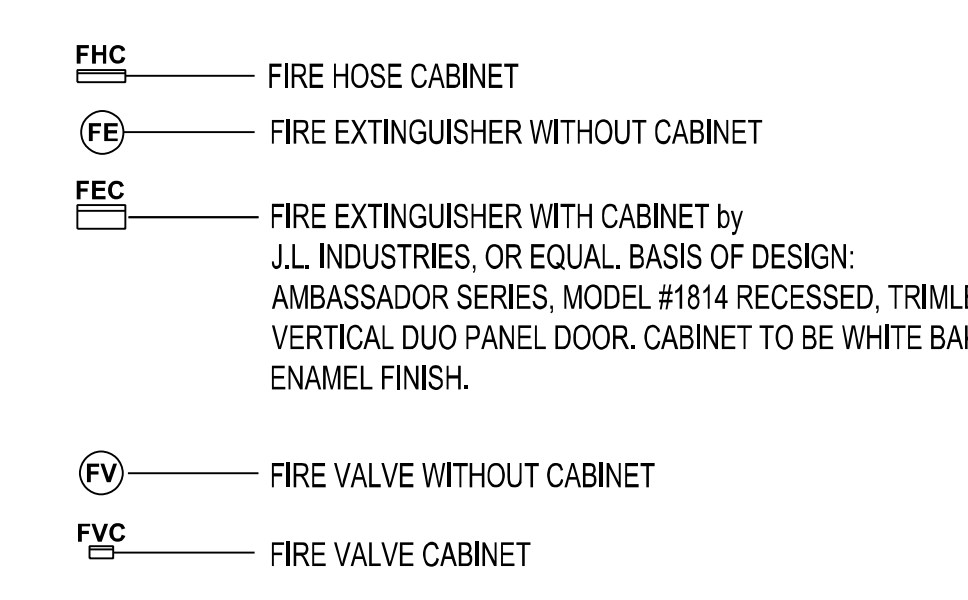


GRAPHIC SYMBOLS (CONT.)

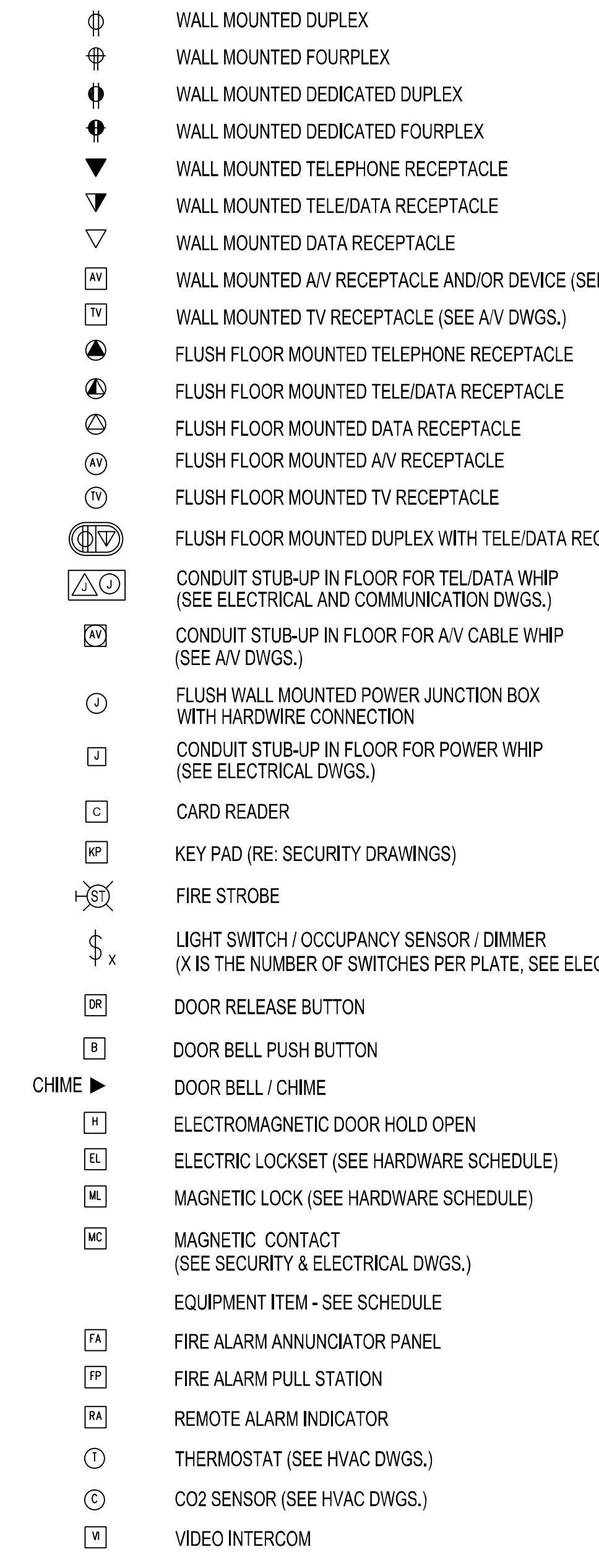
ELEVATION INDICATIONS



CONSTRUCTION (CONTINUED)

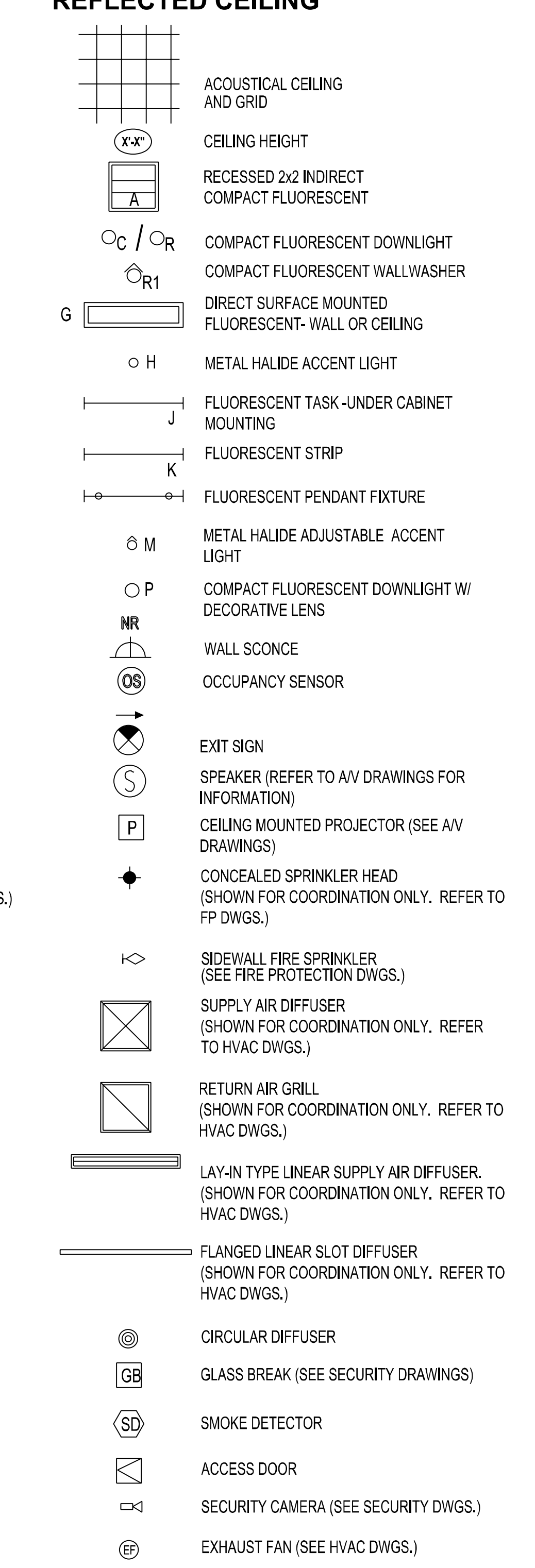


POWER & COMMUNICATION

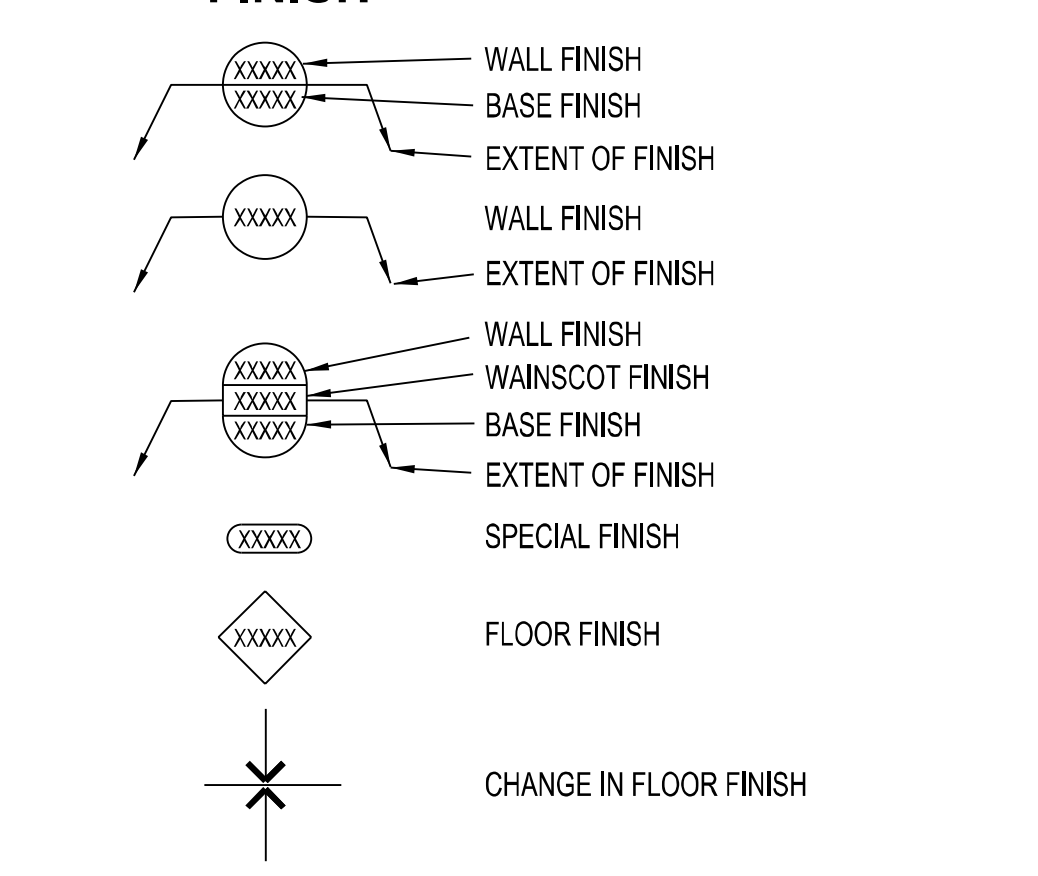


GRAPHIC SYMBOLS (CONT.)

REFLECTED CEILING



FINISH



KLING STUBBINS

2301 Chestnut Street
Philadelphia, Pennsylvania
19103
P 215.569.2900
F 215.569.5963
W www.klingstubbins.com

Consultants:

Seals:

Joseph A. Castner, AIA, ME License No. 3583
General Notes:

Fidelity INVESTMENTS

Fidelity Real Estate Company
82 Devonshire Street F3F
Boston, MA 02210
P 617.563.4681
F 617.598.9384
W alison.kent@fmr.com

Fidelity Investor Center
3 Canal Plaza
Portland, ME 04101

Number	Description	Date
	ISSUED FOR PERMIT & CONST.	1 MAR 2011

CAD File: POR_A00.01.dgn
Project No.: 96-7225-32
Copyright: 2011 KlingStubbins, Inc or LLC

GRAPHIC SYMBOLS AND MATERIALS LEGEND

Drawing Sheet Number:
A00.01
Owner's Drawing Sheet No.:

K:\96722500\Deliverables\32_Portland_MIEPOR_A00.01.dgn

K:\96722500\Deliverables\32_Portland_MIEPOR_A00.01.dgn

K:\96722500\Deliverables\32_Portland_MIEPOR_A00.01.dgn

Printed on Friday February 25 2011 at 11:40AM