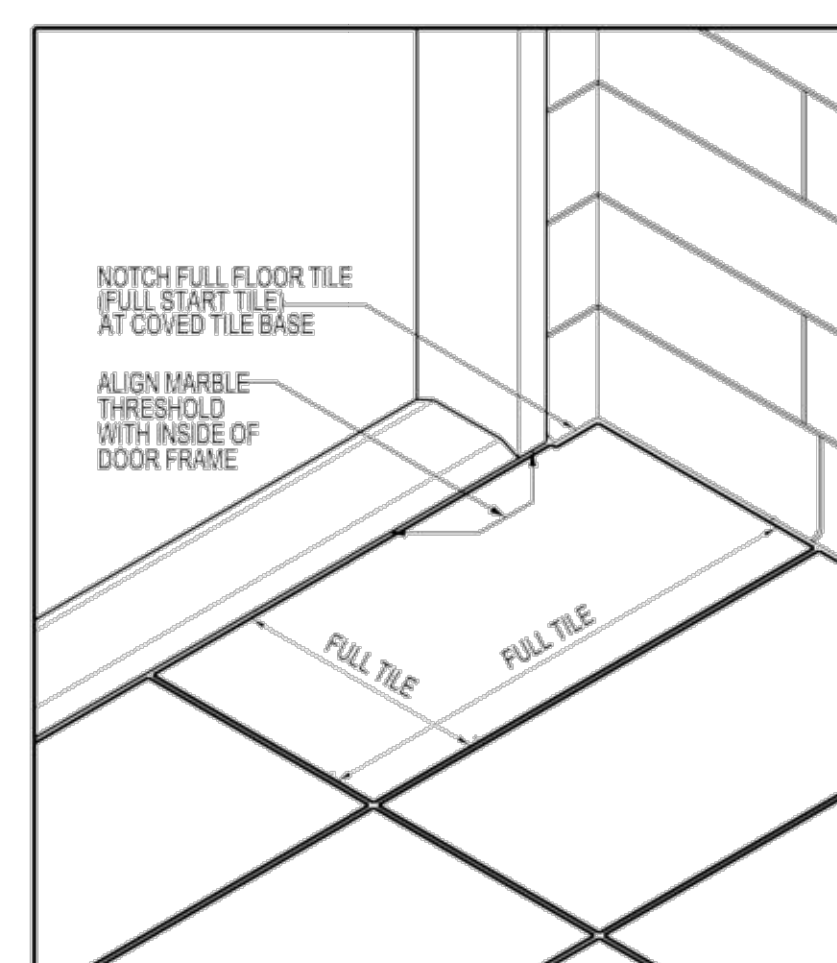
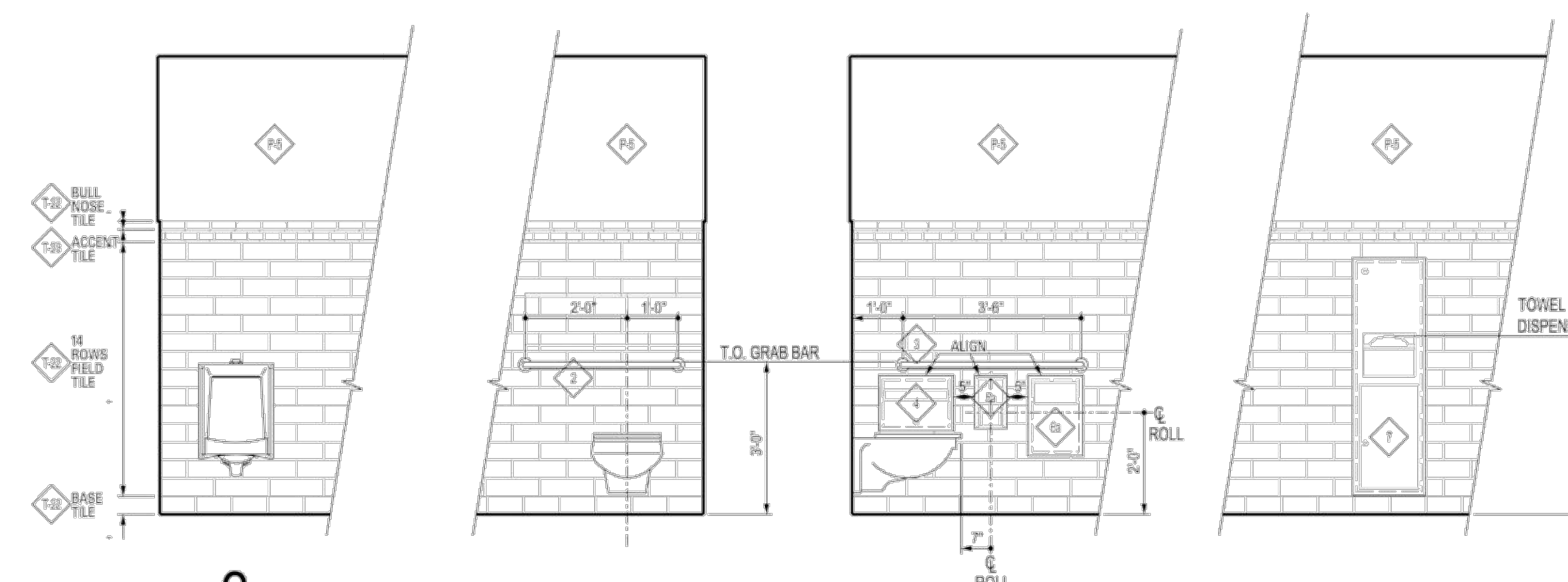


1 PROPOSED
ENLARGED TOILET ROOM PLAN
DSK-810 SCALE: 1/2" = 1'-0"



2 FLOOR TILE START POINT DETAIL
DSK-810 SCALE: N.T.S.



3 TOILET ROOM ELEVATIONS
DSK-810 SCALE: 1/2" = 1'-0"

TOILET ACCESSORIES

- | | |
|---|---|
| ① WASTE RECEPTACLE: BOBRICK CONTURA SERIES RECESSED WASTE RECEPTACLE #B-43644 | ⑩ COAT HOOK (MOUNTED ON BACK OF DOOR: 60" AFF ON 24" DOORS AND 48" ON 34" DOORS). MODEL: PETER PEPPER 2035AL |
| ② 36" GRAB BAR MOUNT HORIZONTAL BOBRICK B-5806.99 | ⑪ TOILET PARTITIONS:
MNF: GLOBAL PARTITIONS
PARTITIONS: STEEL W/ WHITE (#2129) BAKED ENAMEL FINISH, SOUND DEADENING HONEYCOMB & INTERNALLY REINFORCED FOR HARDWARE.
THICKNESS: 1" FINISH THICKNESS FOR DOORS, PANELS, AND SCREENS 1 1/2" FINISH THICKNESS FOR PILASTERS.
COMPARTMENTS: CEILING HUNG
URINAL SCREENS: NOT USED
DOORS: 24" IN SWING & 34" OUT SWING
HARDWARE: ALL HARDWARE TO BE STAINLESS STEEL.
MISC: HINGE: SELF CLOSING WITH HOLD OPEN UP TO 90° LATCH AND KEEPER: SURFACE MOUNTED WITH EMERGENCY ACCESS AND COMBINED RUBBER FACED DOOR STRIKE AND KEEPER
COAT HOOK: INSIDE OF DOOR
DOOR BUMPER: ON OUT SWING DOOR OR ENTRANCE SCREEN DOOR
DOOR PULL: ON OUTSWING DOORS AND ON BOTH SIDES OF ADA INDICATED DOOR |
| ③ 42" GRAB BAR MOUNT HORIZONTAL BOBRICK B-5806.99 | ⑫ SOAP DISPENSER: BOBRICK SUREFLO AUTOMATIC, TOP FILL BULK FOAM SOAP DISPENSER, MODEL: B-628 |
| ④ SURFACE MOUNTED TOILET SEAT COVER DISPENSER BOBRICK B-221 | |
| ⑤ PARTITION MOUNTED MULTI-ROLL TOILET TISSUE DISPENSER BOBRICK B-386 (SERVES TWO COMPARTMENTS) | |
| ⑥ TOILET PAPER DISPENSER: BOBRICK CONTURA RECESSED MULTI-ROLL DISPENSER #B-4388 | |
| ⑦ PARTITION MOUNTED SANITARY NAPKIN DISPOSAL BOBRICK B-554 (SERVES TWO COMPARTMENTS) | |
| ⑧ RECESSED SANITARY NAPKIN DISPOSAL BOBRICK B-35303 | |
| ⑨ HAND DRYER: XLERATOR: XL-SB, MOUNT BOTTOM OF HAND DRYER @ 44" A.F.F. | |
| ⑭ WATER CLOSETS: AMERICAN STANDARD RAPIDWAY ELONGATED TOILET | |
| ⑮ TOTO UNDERMOUNT BATHROOM SINKS. MODEL: LT542G#01, COTTON 20-7/8". FAUCET: ELECTRONIC FAUCET. MODEL: K-13468, SOLID SURFACE COUNTER TOP: CAESARSTONE, QUARTZ SURFACES, (OR EQUAL) ATLANTIC SALT, #6270 | |

PLAN NOTES

- ① REFER TO DETAIL 3, THIS SHEET, FOR EXTENT OF TILE ON PARTITIONS SCHEDULED TO RECEIVE TILE.
- ② TOILET ACCESSORIES - ADDITIONAL INFORMATION SEE SHEET DSK-201
- ③ SEE DSK-201 FOR TILE PATTERN. SEE DETAIL 2 THIS SHEET FOR TILE START POINT.
- ④ PROVIDE ADDITIONAL BLOCKING AND FRAMING ABOVE CEILING FOR SUPPORT OF TOILET PARTITIONS.
- ⑤ PROVIDE WATERPROOF MEMBRANE FOR FULL EXTENT OF FLOOR TILE INSTALLATION. EXTEND MEMBRANE UP WALLS 6" TO BE SCHLUTER "KERDI SYSTEM" OR EQUAL.
- ⑥ RE-INSTALL EXISTING MIRRORS.

SHEET NOTES

1. SEE FINISH SCHEDULE ON SHEET DSK-201.