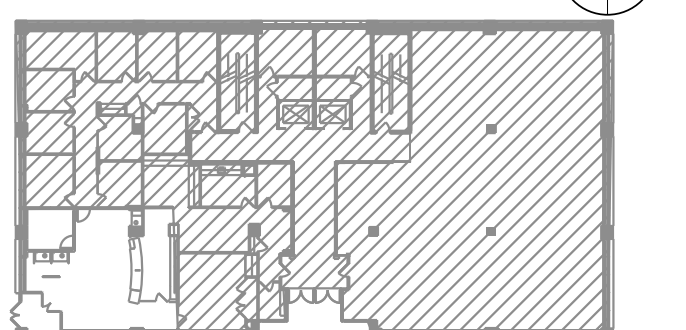


Number	Description	Date
1	ISSUED FOR PERMIT & CONST	03 OCT 14



**1 POWER & COMMUNICATION
LOCATION PLAN**
ID-301 SCALE: 1/4" = 1'-0"

POWER AND COMM. PLAN NOTES

- (A) JUNCTION BOX OR RECEPTACLE MOUNTED ABOVE CEILING
- (B) POWER AND DATA DEVICES AND COVER PLATES MOUNTED WITHIN MILLWORK TO BE BLACK. COORDINATE LOCATION OF POWER/TELEDATA WITH MILLWORK DETAILS ON SHEET ID-840. REFER TO DETAILS ON ID-840 FOR WIRE MOLD AND ELECTRONIC MAT INSTALLATION AT TRADING KIOSK.

EQUIPMENT KEY

PROVIDE	GC		OTHERS		
	INSTALL	PROVIDE	INSTALL	OTHERS	
X	X				QD: ACTIVATION MAT - RCTNGL SQR EDGE: LARCO 14L198-D
		X	X	A	STANDARD PHONE
		X	X	N	PRINTER: SMALL B&W
		X	X	KK	CPU

SHEET NOTES

1. DEVICES LOCATED ON THIS SHEET ARE ARCHITECTURALLY-SENSITIVE. COORDINATE LOCATIONS AND SIZE OF GANG BOX OF ALL ELEC., TEL/DATA AND A/V DEVICES WITH ELEC./AV/TELECOMM DWGS.
2. RE: SHEET ID-001 FOR TYPICAL DEVICE MOUNTING HEIGHTS AND ALIGNMENT.
3. ALL OFFICE POWER AND DATA TO BE LOCATED APPROXIMATELY 4'-0" CENTER LINE FROM EDGE OF FURNITURE AT BACK WALL (RE: ID-401).
4. ALL PERIMETER OFFICE POWER AND DATA TO BE LOCATED APPROXIMATELY 4'-0" CENTER LINE FROM EDGE OF FURNITURE AT BACK WALL (RE: ID-401).
5. COORDINATE ALL SECURITY DEVICE LOCATIONS WITH ARCHITECT AND GRAPHICS.
6. ALL ELEC., TEL/DATA AND A/V DEVICES & COVERPLATES TO BE WHITE UNLESS NOTED OTHERWISE.
7. STROBES ARE NOT TO BE LOCATED ON LARGE WALL EXPANSES OR AT DIRECT END OF HALLWAYS.
8. FTG TO PROVIDE USB EXTENSIONS.



2 REFLECTED CEILING PLAN
ID-301 SCALE: 1/4" = 1'-0"

REFLECTED CEILING NOTES

1. BEGIN FIXTURE LAYOUT HERE
2. FULL START TILE
3. CEILING MOUNTED SPEAKER
4. JUNCTION BOX FOR NEW MOTORIZED SHADES, WATER HEATER, AND/OR DRIP MONITOR.
5. DASHED LINE INDICATES MILLWORK BELOW
6. INDICATES NEW LOCATION FOR LINEAR HVAC DIFFUSER. PROVIDE DUMMY GRILLES AND BLANK-OFFS AS REQUIRED. PAINT VISIBLE DUCT INTERIORS AND VISIBLE FRAMING ELEMENTS ABOVE GRILLES IN BLACK. ADD ALTERNATE PROVIDE CONTINUOUS DIFFUSER APPEARANCE.
7. INDICATES SECURITY CAMERA LOCATION. PROVIDE CONCEALED JUNCTION BOX, POWER, AND CONDUIT AS REQUIRED.

SHEET NOTES

1. ALL CEILING HEIGHTS TO BE +8'-6" AFF U.N.O.
2. REFER TO ENGINEERING DRAWINGS FOR LIGHTING FIXTURE SCHEDULE.
3. ALL CEILING GRID TO BE ACT-1, U.N.O.
4. ALL LIGHT FIXTURES TO BE PLACED IN CENTER OF CEILING TILE, U.N.O.
5. DIMENSIONS SHOWN ARE FROM CENTER LINE OF LIGHT FIXTURE U.N.O.

K:\K2812515 R24 Portland ME Expansion\Design\Discipline\Interior\POR_ID-301 (power & communication and Reflected).dgn

Printed on Wednesday, October 01, 2014 at 01:22PM klmackenzie