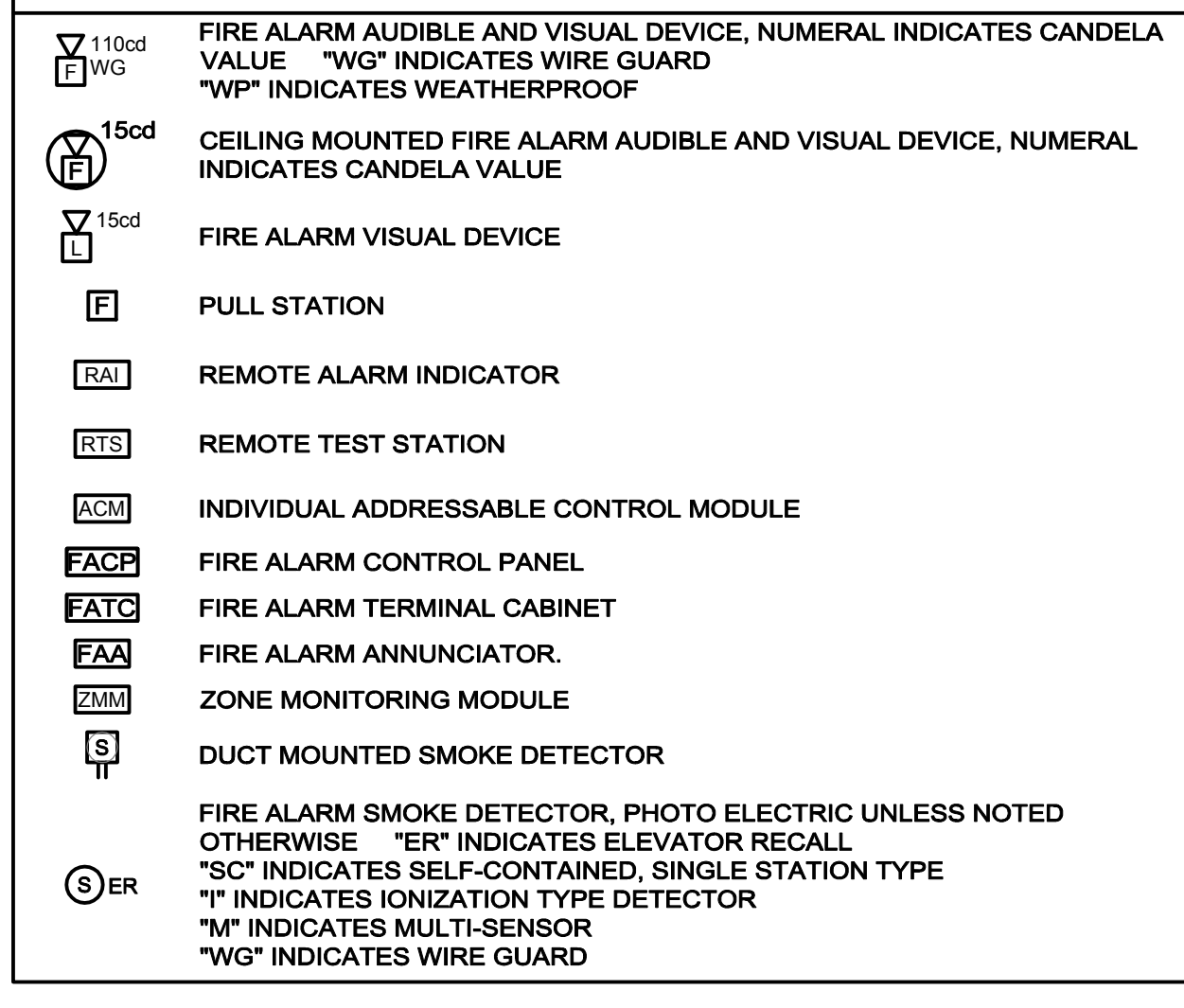
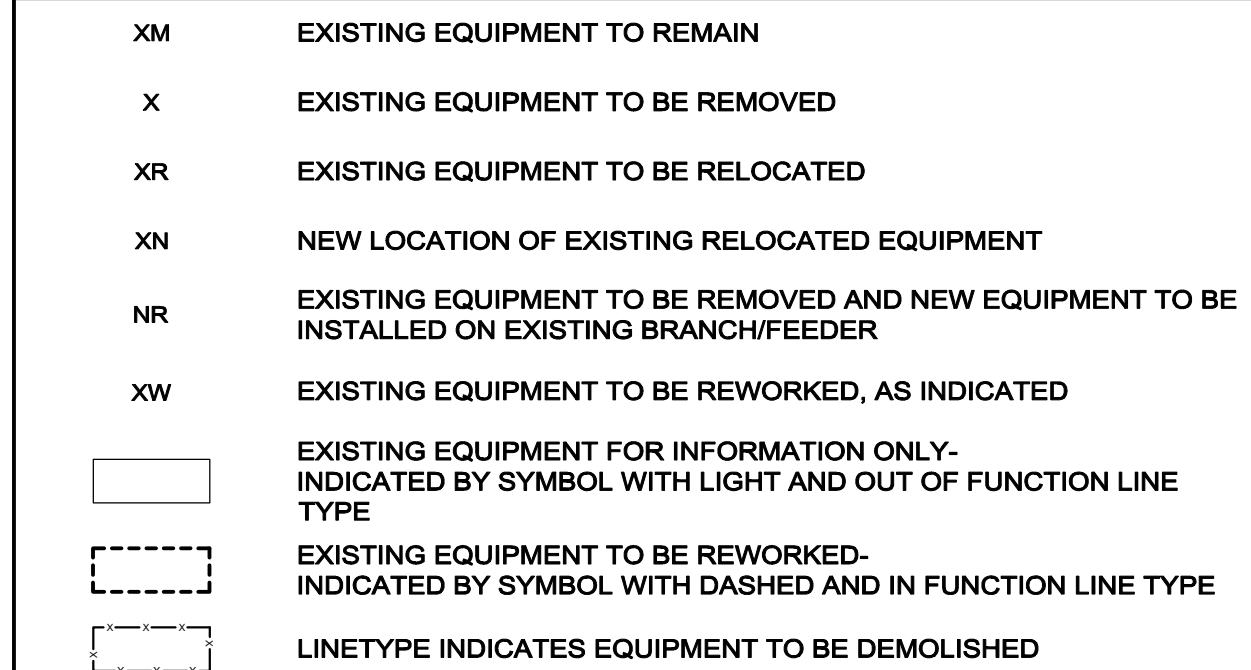


FIRE ALARM LEGEND

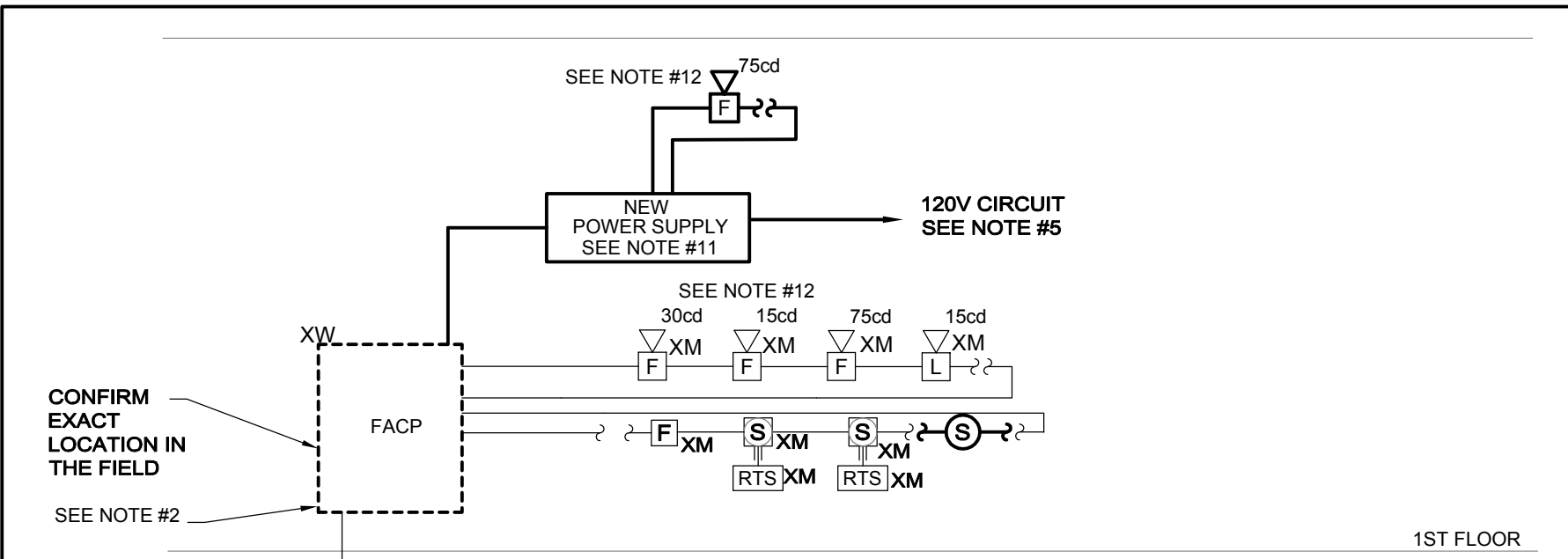


EXISTING EQUIPMENT LEGEND



FIRE ALARM NOTES:

1. REFER TO DRAWING E-000 FOR LEGEND, SYMBOLS AND GENERAL NOTES.
2. REFER TO ARCHITECTURAL DRAWINGS FOR ASSOCIATED NOTES, MOUNTING DETAILS, HEIGHTS AND EXACT LOCATIONS OF ALL DEVICES.
3. FIRE ALARM BRANCH CIRCUITRY SHALL BE INSTALLED IN CONDUIT FROM THE PANEL TO THE FIRST DEVICE AND/OR WHERE EXPOSED. FIRE ALARM BRANCH CIRCUITRY MAY BE TYPE MC CABLE WHERE CONCEALED ABOVE SUSPENDED CEILINGS AND IN METAL STUD WALLS.
4. MC CABLE FOR FIRE ALARM SERVICE SHALL HAVE A RED IDENTIFIER ALONG ITS ENTIRE LENGTH. JUNCTION BOX COVERS AND CONDUIT COUPLINGS FOR ALL FIRE ALARM WIRING RACEWAYS SHALL BE PAINTED RED PRIOR TO INSTALLATION.
5. MAINTAIN CONTINUITY OF BRANCH CIRCUITRY ASSOCIATED WITH ALL EXISTING FIRE ALARM DEVICES TO REMAIN.



NOTES:

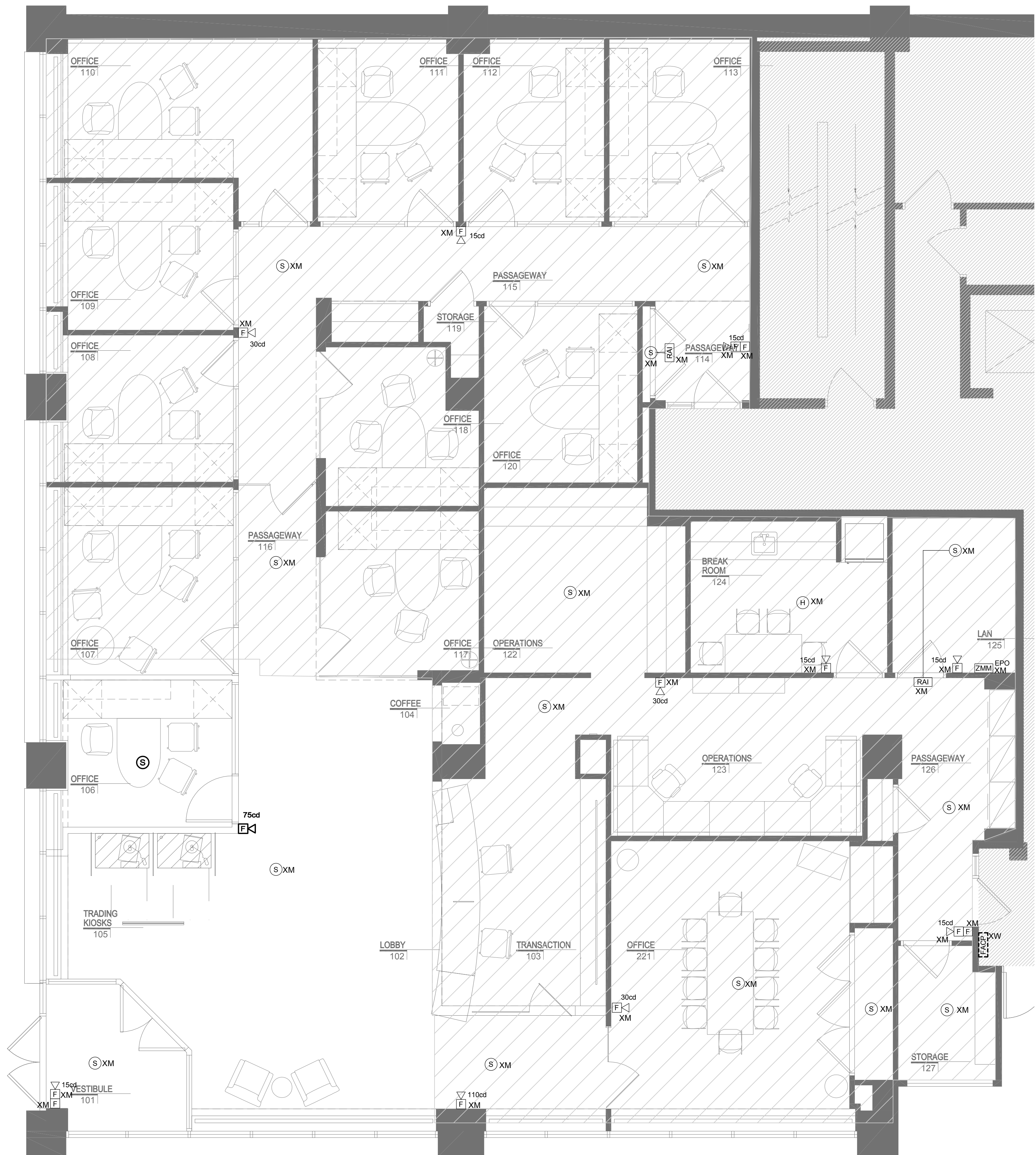
1. THIS DRAWING IS INTENDED TO ILLUSTRATE MAJOR EQUIPMENT AND THE INTENDED INTERCONNECTIONS. REFER TO THE FLOOR PLAN FOR EXACT LOCATIONS AND QUANTITIES OF DEVICES. REFER TO THE MANUFACTURERS WIRING DIAGRAMS FOR INTERCONNECTION REQUIREMENTS. INTERCONNECTION DETAILS SHALL BE INCLUDED IN THE SHOP DRAWING WITH COMPONENT CUT SHEETS FOR REVIEW AND APPROVAL.
2. ALL FINAL CONNECTIONS INTO THE EXISTING FIRE ALARM SYSTEM SHALL BE PERFORMED BY THE OWNER'S FIRE ALARM MAINTENANCE CONTRACTOR. THE ELECTRICAL CONTRACTOR SHALL CARRY ALL ASSOCIATED COSTS FOR FINAL CONNECTION AND ASSOCIATED TESTING.
3. FIRE ALARM SYSTEM SHALL BE IN CONFORMANCE WITH THE LOCAL FIRE DEPARTMENT RULES AND REGULATIONS.
4. PROVIDE BATTERIES SIZED TO ACCOMMODATE NOTIFICATION APPLIANCE QUANTITIES ILLUSTRATED WITH 50% ADDITIONAL SPARE CAPACITY.
5. PROVIDE UL LISTED LOCKING DEVICE FOR POWER SOURCE CIRCUIT BREAKER AND LABEL AS "FIRE ALARM CONTROL CIRCUIT" IN THE PANELBOARD DIRECTORY.
6. VISUAL APPLIANCES WITHIN SAME ROOM OF FIELD OF VIEW SHALL BE SYNCHRONIZED.
7. STROBES INDICATED AS 15cd OR 30cd SHALL BE DUAL RATED 15/75cd OR 30/75cd RESPECTIVELY.
8. CONTRACTOR SHALL FURNISH FOR RECORD FINAL APPROVED SHOP DRAWINGS TO BUILDING MANAGEMENT COMPANY AND ENGINEER.
9. ALL FIRE ALARM SYSTEM RACEWAY SIZES AND CIRCUITRY REQUIREMENTS SHALL BE IN ACCORDANCE WITH FIRE ALARM MANUFACTURERS RECOMMENDATIONS, NFPA 72, ALL CODES WHICH MAY APPLY, AND THE LOCAL FIRE DEPARTMENT.
10. PROVIDE SIGNAL TO SECURITY CARD READER/KEY PAD/DOOR RELEASE SYSTEM TO UNLOCK ALL DOORS (EQUIPPED WITH CARD READERS, KEY PADS OR DOOR RELEASE BUTTONS) DURING FIRE ALARM CONDITION. COORDINATE WITH SECURITY CONTRACTOR.
11. PROVIDE POWER BOOSTERS SIZED TO ACCOMMODATE NOTIFICATION APPLIANCE QUANTITIES ILLUSTRATED WITH 50% ADDITIONAL SPARE CAPACITY. PROVIDE DEDUCT ALTERNATE TO DELETE NEW POWER SUPPLY IF EXISTING CAPACITY IS SUFFICIENT AND ILLUSTRATED WITH CALCULATIONS.
12. ALL NEW FIRE ALARM DEVICES SHALL MATCH EXISTING MANUFACTURER AND BE CROSSED LISTED FOR CONNECTION TO THE EXISTING SYSTEM. ALL NEW AUDIOVISUAL DEVICES SHALL BE WHITE WITH RED LETTERS.

FIRE ALARM RISER DIAGRAM

N.T.S.

SEQUENCE OF OPERATIONS

- A. THE GENERAL ARRANGEMENT OF THE SEQUENCE OF OPERATION IS DESCRIBED BELOW AND IS SUBJECT TO CONFIRMATION BY THE INSTALLING CONTRACTOR AND FIRE ALARM SYSTEM CONTROL UNIT TECHNICAL REPRESENTATIVE.
- B. ACTIVATION OF A MANUAL PULL STATION, SMOKE DETECTOR, HEAT DETECTOR OR SPRINKLER SYSTEM WATERFLOW SWITCH SHALL INITIATE THE PREDEFINED FIRE ALARM SYSTEM "ALARM" SEQUENCE:
 1. DISPLAY ALARM CONDITION AT FIRE ALARM CONTROL UNIT AND REMOTE ANNUNCIATOR(S).
 2. ENERGIZE AUDIBLE (TEMPORAL-3 PATTERN) AND VISUAL (UL 1971 SYNCHRONIZED STROBE) OCCUPANT NOTIFICATION CIRCUITS WITHIN EVACUATION ZONE(S) AS DESIGNATED BY PRE-ESTABLISHED CONTROL UNIT SEQUENCE OF OPERATIONS.
 3. PERFORM AUXILIARY FIRE SAFETY FUNCTIONS AS DESIGNATED BY PRE-ESTABLISHED CONTROL UNIT SEQUENCE OF OPERATIONS SUCH AS ELEVATOR RECALL, DAMPER ACTIVATION, DOOR CLOSURE, AHU SHUTDOWN, PRESSURIZATION SYSTEMS, ETC.
 4. TRANSMIT ALARM CONDITION TO CENTRAL / SUPERVISING STATION AND/OR LOCAL FIRE DEPARTMENT VIA MUNICIPAL ALARM SYSTEM.
- C. THE OPERATION OF A NEW SPRINKLER TAMPER SWITCH OR DUCT SMOKE DETECTOR SHALL INITIATE THE PREDEFINED FIRE ALARM SYSTEM "SUPERVISORY" SEQUENCE:
 1. DISPLAY SUPERVISORY CONDITION AT FIRE ALARM CONTROL UNIT AND REMOTE ANNUNCIATOR(S).
 2. TRANSMIT SUPERVISORY CONDITION TO CENTRAL / SUPERVISING STATION.
 3. IN ADDITION, THE OPERATION OF AN EXISTING OR NEW DUCT DETECTOR SHALL SHUT-DOWN THE CORRESPONDING AIR HANDLING UNIT (AHU).
- D. NORMAL POWER FAILURE TO FIRE ALARM SYSTEM REMOTE POWER SUPPLIES, GROUND FAULTS, SHORT CIRCUITS AND OPEN CIRCUIT CONDITIONS SHALL INITIATE THE PREDEFINED FIRE ALARM SYSTEM "TROUBLE" SEQUENCE:
 1. DISPLAY SUPERVISORY CONDITION AT FIRE ALARM CONTROL UNIT AND REMOTE ANNUNCIATOR(S).
 2. TRANSMIT TROUBLE CONDITION TO CENTRAL / SUPERVISING STATION.



1 ELECTRICAL FIRE ALARM PLAN
E-401 SCALE: 1/4" = 1'-0"

Copyright 2014 by Fidelity Real Estate Company. All rights reserved. This drawing is the property of Fidelity Real Estate Company and is not to be used, copied, or distributed without the written permission of Fidelity Real Estate Company.

KLING STUBBINS

2301 Chestnut Street
Philadelphia, Pennsylvania
19103
P 215.569.2900
F 215.569.5963
W www.klingstubbins.com

Fidelity's Engineering Consultant:



Andover, MA • Boston, MA • Amesbury, MA
Durham, NC • Charlotte, NC
70 Fargo Street Boston, MA 02210-1964
T 617-345-9888

Seals:

General Notes:

Project Title:



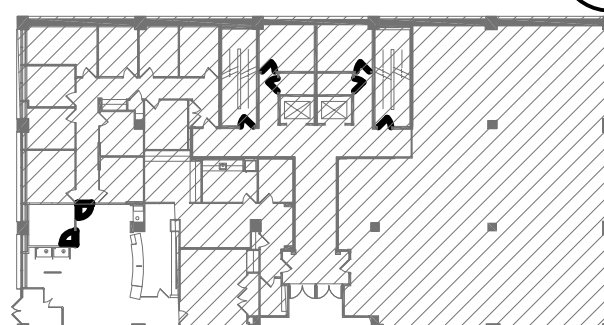
Fidelity Real Estate Company
245 Summer Street
Boston, MA 02110

Fidelity Investor Center
3 Canal Plaza
Portland, ME 04112
Branch ID No. 120

Number	Description	Date
03	ISSUED FOR PERMIT & CONSTR	03 OCT 14

Key Plan:

Project North



CAD File:

Project No.: 20140629
Copyright: 2014 KlingStubbins, Inc or LLC

Drawing Sheet Title:

**ELECTRICAL FIRE ALARM
PLAN**

Drawing Sheet Number:

E-401

Owner's Drawing Sheet No.: