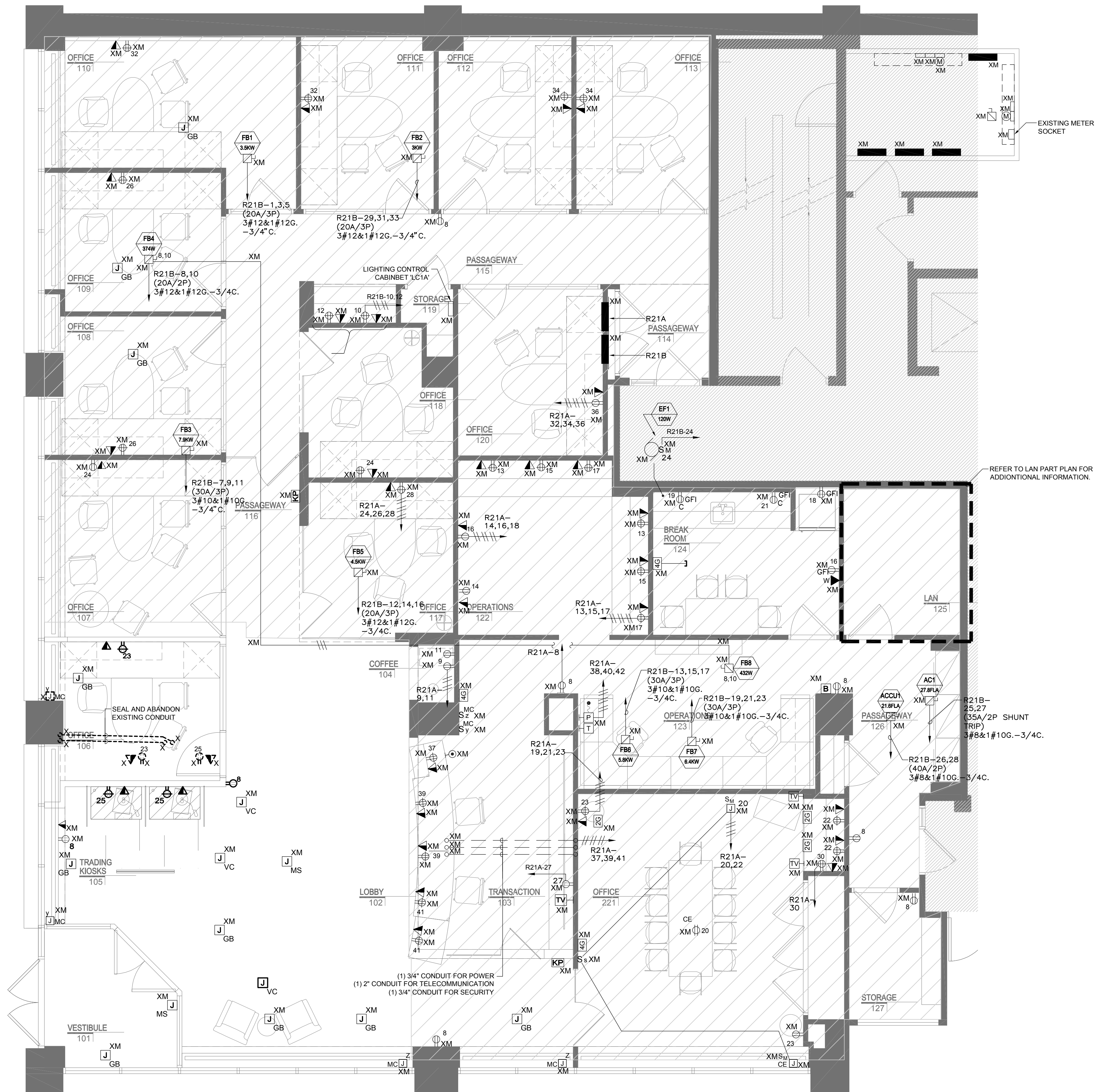


SPECIAL PURPOSE RECEPTACLE SCHEDULE				
TAG	NEMA CONF.	RATING	CIRCUIT BREAKER	BRANCH CIRCUIT
3	L6-30R	30A, 250V, 2P, 3W	30A-2P	2#10 & 1#10G, - 3/4" C.

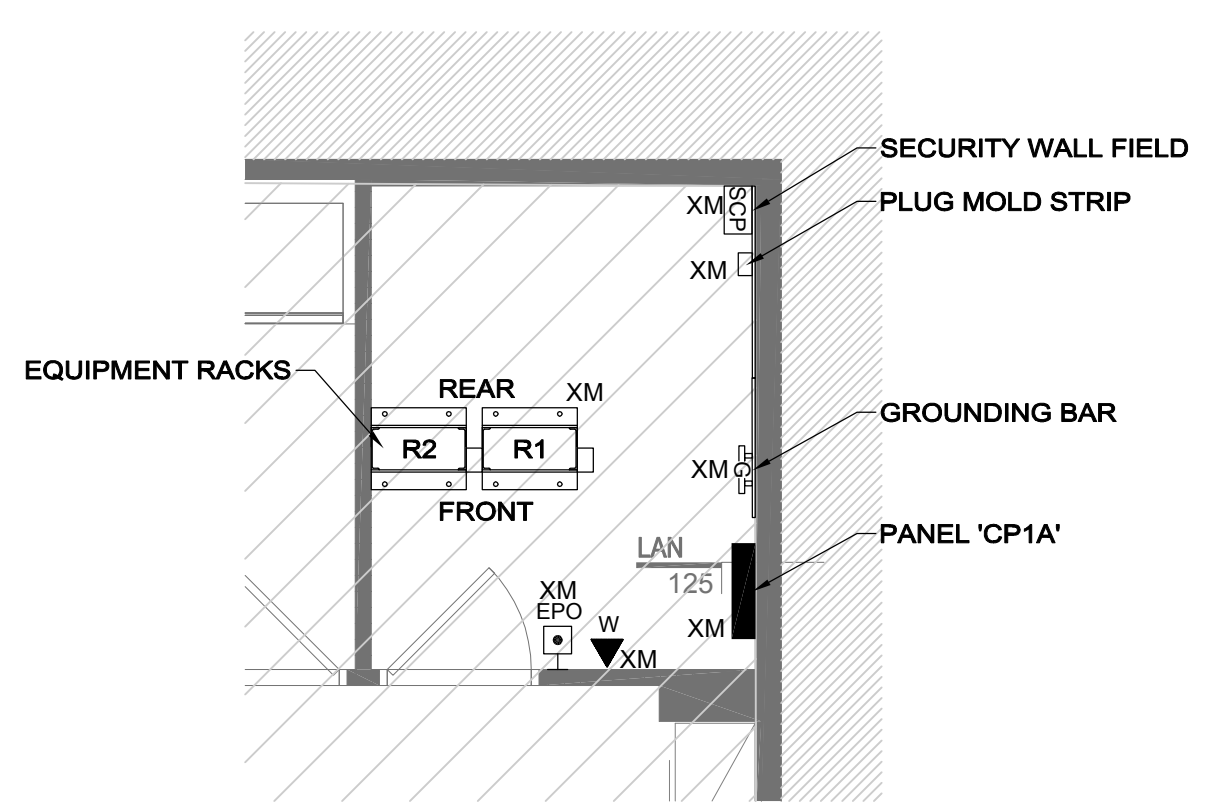
NOTES:

- DEVICE NEMA CONFIGURATION SHALL BE CONFIRMED PRIOR TO INSTALLATION. MATCH CONFIGURATION OF EQUIPMENT CORD CAP. NOTIFY OWNER'S REPRESENTATIVE OF RATING DISCREPANCY.
- CONDUCTOR SIZES ARE THE MINIMUM ALLOWED BASED UPON NEC TABLE 310-15(B)(16) WITH NO GREATER THAN THREE CURRENT CARRYING CONDUCTORS PER RACEWAY IN AN AMBIENT NOT TO EXCEED 30 DEGREES C.
- VOLTAGE DROP IS NOT CONSIDERED IN BRANCH CIRCUIT SIZES. ALL BRANCH CIRCUITS WHICH EXCEED 75 FEET SHALL BE INCREASED A MINIMUM OF ONE SIZE TO LIMIT VOLTAGE DROP TO LESS THAN 3%.
- RACEWAY SIZES ARE THE MINIMUM ALLOWED BASED UPON NEC TABLE C1 FOR THHN/THWN CONDUCTORS IN EMT. RACEWAY SIZES SHALL BE INCREASED TO ACCOMMODATE DIFFERING INSULATION SYSTEMS AND RACEWAY TYPES TO LIMIT RACEWAY FILL TO LESS THAN 40%.

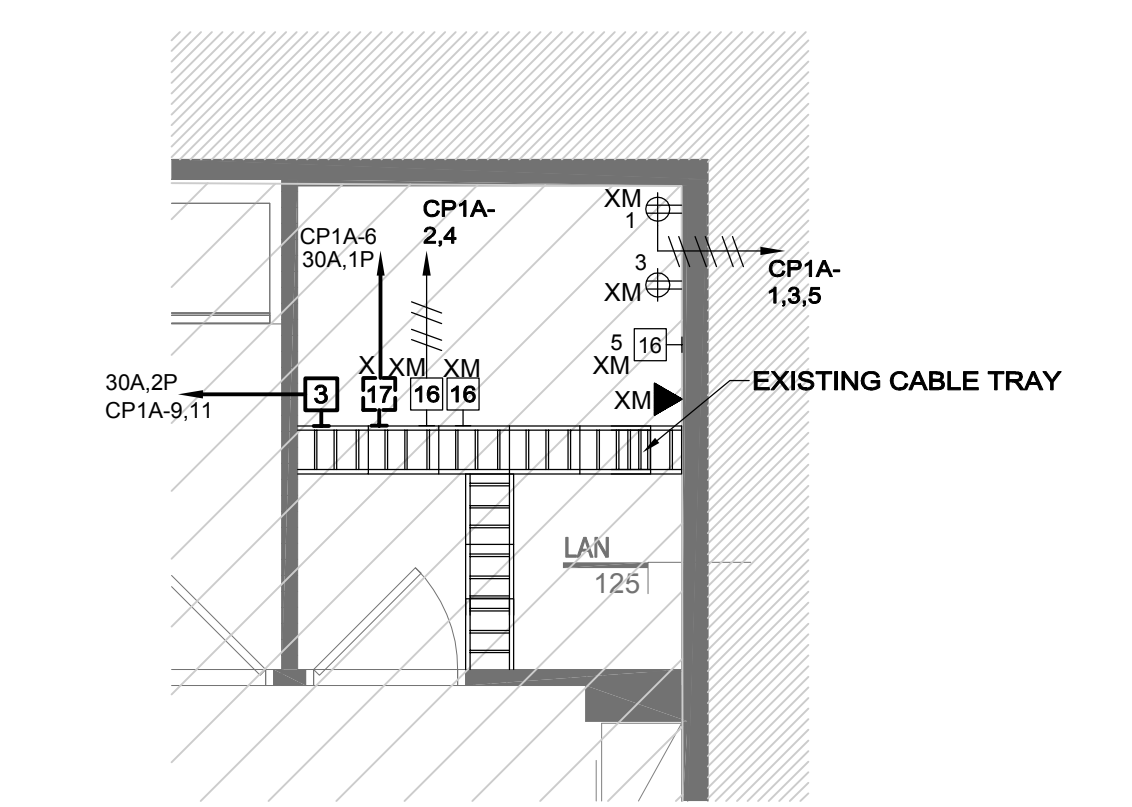
- POWER NOTES:**
- REFER TO DRAWING E-000 FOR LEGEND, SYMBOLS AND GENERAL NOTES.
  - REFER TO ARCHITECTURAL DRAWINGS FOR ASSOCIATED NOTES, MOUNTING DETAILS, HEIGHTS AND EXACT LOCATIONS OF ALL DEVICES. COORDINATE WITH MECHANICAL, SECURITY, AV AND TEL/DATA CONTRACTORS FOR THE FINAL LOCATION OF ALL DEVICES.
  - CIRCUIT NUMBERS ARE DIAGNOSTIC. EXACT NUMBERS SHALL BE DETERMINED IN THE FIELD AND REFLECTED ON AS-BUILT DOCUMENTATION BY THE ELECTRICAL CONTRACTOR. THE ASSOCIATED CIRCUIT NUMBERS THAT ARE APPLIED TO EACH DEVICE AND PIECE OF EQUIPMENT INFERS INTERCONNECTING BRANCH CIRCUITRY. INTERCONNECTING BRANCH WIRING SHALL BE SIZED EQUAL TO THE HOMERUN UNLESS NOTED OTHERWISE. FOR EXISTING CIRCUITS VERIFY PROPER LOADING OF THE CIRCUITS PRIOR TO WORK.
  - VOLTAGE DROP HAS BEEN CONSIDERED IN THE DESIGN OF ALL BRANCH CIRCUITRY AND FEEDER SIZES BASED UPON THE ILLUSTRATED EQUIPMENT LAYOUTS AND SHORTEST CONDUCTOR/RACEWAY ROUTING. THE ELECTRICAL CONTRACTOR SHALL BE RESPONSIBLE FOR DEVIATIONS TAKEN THAT WILL INCREASE CONDUCTOR/RACEWAY ROUTING LENGTHS. BRANCH CIRCUITS LONGER THAN 75' FOR 120V FROM PANEL TO LAST OUTLET SHALL BE INCREASED A MINIMUM OF ONE SIZE ABOVE THAT SPECIFIED TO LIMIT VOLTAGE DROP TO LESS THAN 3%. FEEDERS SHALL FOLLOW SIMILAR GUIDELINES AND BE LIMITED TO 2% DROP.
  - POWER BRANCH CIRCUITRY SHALL BE INSTALLED IN CONDUIT FROM THE PANEL TO THE FIRST DEVICE AND/OR WHERE EXPOSED. POWER BRANCH CIRCUITRY MAY BE TYPE MC CABLE WHERE CONCEALED ABOVE SUSPENDED CEILING AND IN METAL STUD WALLS.
  - MAINTAIN CONTINUITY OF BRANCH CIRCUITRY ASSOCIATED WITH ALL EXISTING POWER DEVICES TO REMAIN.
  - SWITCHBOARDS, PANELBOARDS, METER SOCKET ENCLOSURES AND MOTOR CONTROL CENTERS SHALL BE FIELD MARKED TO WARN QUALIFIED PERSONS OF POTENTIAL ELECTRIC ARC FLASH HAZARDS. THE MARKING SHALL BE LOCATED SO AS TO BE CLEARLY VISIBLE TO QUALIFIED PERSONS BEFORE EXAMINATION, ADJUSTMENT, SERVICING, OR MAINTENANCE OF THE EQUIPMENT.
  - PROVIDE EMPTY CONDUITS WITH PULLSTRINGS UP TO THE CEILING FOR ALL AV AND TEL/COM DEVICES. REFER TO AV AND TEL/COM DRAWINGS FOR EXACT REQUIREMENTS AND LOCATIONS UNLESS OTHERWISE NOTED.



**1**  
ELECTRICAL POWER PLAN  
E-301 SCALE: 1/4" = 1'-0"



ELECTRICAL LAN ROOM  
PART PLAN - EXISTING  
SCALE: 1/4" = 1'-0"



ELECTRICAL LAN ROOM  
OVERHEAD PLAN - EXISTING  
SCALE: 1/4" = 1'-0"

**KLING STUBBINS**  
2301 Chestnut Street  
Philadelphia, Pennsylvania  
19103  
P 215.569.2900  
F 215.569.5963  
W www.klingstubbins.com

Fidelity's Engineering Consultant:

**RDK**  
ENGINEERS  
Anderson, MA • Bristol, MA • Amherst, MA  
Durham, NC • Charlotte, NC  
70 Fargo Street Boston, MA 02210-1964  
T 617-345-9885

Seals:

General Notes:

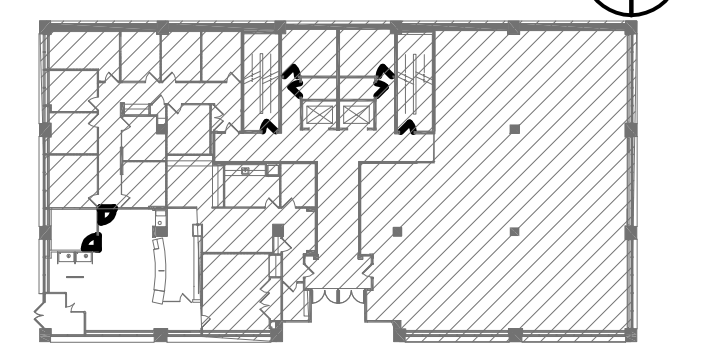
Project Title:

**Fidelity**  
INVESTMENTS  
Fidelity Real Estate Company  
245 Summer Street  
Boston, MA 02110

Fidelity Investor Center  
3 Canal Plaza  
Portland, ME 04112  
Branch ID No. 120

Number	Description	Date
1	ISSUED FOR PERMIT & CONSTR	03 OCT 14

Key Plan: Project North



CAD File:  
Project No.: 20140629  
Copyright: 2014 KlingStubbins, Inc or LLC

Drawing Sheet Title:  
**ELECTRICAL POWER PLAN**

Drawing Sheet Number:  
**E-301**  
Owner's Drawing Sheet No.:

C:\021402140629 - Fidelity Real Estate Company\02140629 - 301 ELECTRICAL POWER PLAN.dwg (Pw) October 03, 2014, 4:27pm (Auto)