

**LIGHTING NOTES:**

- REFER TO DRAWING E-000 FOR LEGEND, SYMBOLS AND GENERAL NOTES.
- REFER TO ARCHITECTURAL DRAWINGS, INCLUDING BUT NOT LIMITED TO, REFLECTED CEILING PLANS AND ELEVATIONS FOR ASSOCIATED NOTES, MOUNTING DETAILS AND EXACT LOCATIONS OF ALL LIGHTING FIXTURES.
- PROVIDE COMMON FACE PLATE AND REQUIRED METAL INTERIOR BOX BARRIERS FOR ALL MULTIPLE GANG SWITCH LOCATIONS.
- CIRCUIT NUMBERS ARE DIAGRAMMATIC. EXACT NUMBERS SHALL BE DETERMINED IN THE FIELD AND REFLECTED ON AS-BUILT DOCUMENTATION BY THE ELECTRICAL CONTRACTOR. THE ASSOCIATED CIRCUIT NUMBER AND SWITCH LEG NOMENCLATURE THAT ARE APPLIED TO EACH LIGHTING FIXTURE AND CONTROLLING DEVICE INFER INTERCONNECTING BRANCH CIRCUITRY. FOR EXISTING CIRCUITS VERIFY PROPER LOADING OF THE CIRCUITS PRIOR TO WORK.
- VOLTAGE DROP HAS BEEN CONSIDERED IN THE DESIGN OF ALL BRANCH CIRCUIT AND FEEDER SIZES BASED UPON THE ILLUSTRATED EQUIPMENT LAYOUTS AND SHORTEST CONDUCTOR/RACEWAY ROUTING. THE CONTRACTOR SHALL BE RESPONSIBLE FOR DEVIATIONS TAKEN THAT WILL INCREASE CONDUCTOR/RACEWAY ROUTING LENGTHS. BRANCH CIRCUITS LONGER THAN 75' FOR 120V AND 175' FOR 277V FROM PANEL TO LAST OUTLET SHALL BE INCREASED A MINIMUM OF ONE SIZE ABOVE THAT SPECIFIED TO LIMIT VOLTAGE DROP TO LESS THAN 3%.
- COORDINATE THE PLACEMENT OF ALL PENDENT, SURFACE OR SEMI-FLUSH FIXTURES AND DEVICES WITH THE FIRE PROTECTION CONTRACTOR TO MAINTAIN NFPA 13 REQUIRED SEPARATION BETWEEN SPRINKLER HEADS AND OBSTRUCTIONS.
- UNDER NORMAL OPERATING CONDITIONS SWITCH SHALL CONTROL THE FIXTURE OPERATIONS. DURING POWER LOSS FIXTURE SHALL ILLUMINATE VIA EMERGENCY BATTERY PACK.
- LIGHTING BRANCH CIRCUITRY SHALL BE INSTALLED IN CONDUIT FROM THE PANELBOARD TO THE FIRST OUTLET AND/OR WHERE EXPOSED. LIGHTING BRANCH CIRCUITRY MAY BE TYPE MC CABLE WHERE CONCEALED ABOVE SUSPENDED CEILINGS OR IN METAL STUD WALLS.
- MAINTAIN CONTINUITY OF BRANCH CIRCUITRY ASSOCIATED WITH ALL EXISTING LIGHTING TO REMAIN.

**KEY NOTES:**

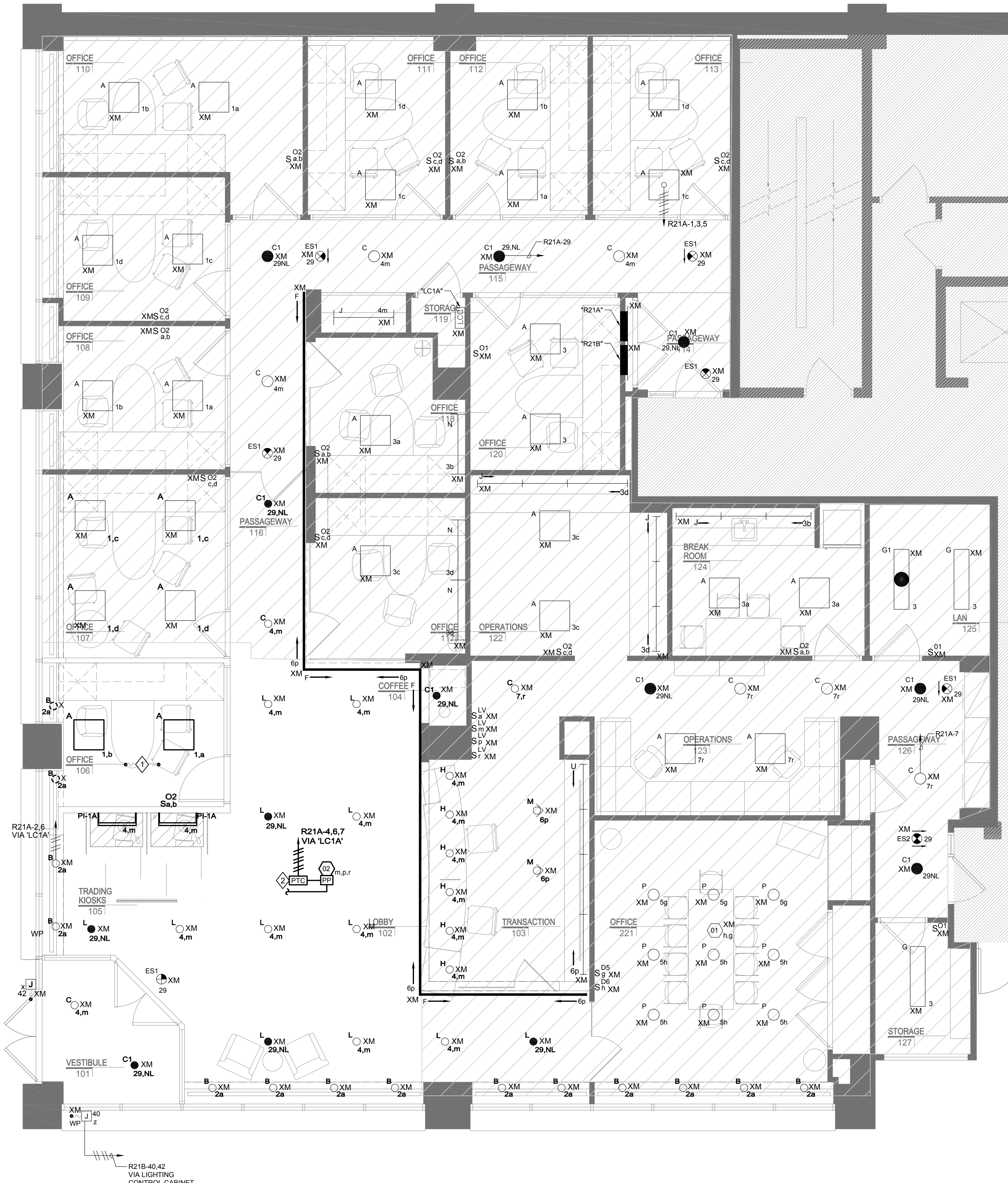
- ELECTRICAL CONTRACTOR SHALL CIRCUIT ALL NEW LIGHT FIXTURES WITHIN THE DESIGNATED AREA TO THE NEAREST 120V ENCLOSED OFFICE LIGHTING BRANCH CIRCUIT SERVING THE AREA. VERIFY PROPER LOADING OF THE CIRCUIT. PROVIDE CONTROLS AS SHOWN.
- POWER TRANSFER CONTROL, LVS #RRU, OR APPROVED EQUAL, POWER TRANSFER CONTROL UNIT SHALL, DURING OFFICE HOURS, ALLOW LOBBY AND CORRIDOR LIGHTING TO BE CONTROLLED VIA THE TIMECLOCK FROM EXISTING LIGHTING CONTROL CABINET. AFTER OFFICE HOURS, THE POWER TRANSFER CONTROL UNIT SHALL SWITCH CONTROL OF LOBBY AND CORRIDORS LIGHTING TO THE CEILING MOUNTED OCCUPANCY SENSOR. WHEN MOVEMENT IS DETECTED, ALL LIGHTING WITHIN LOBBY AND CORRIDOR AREA SHALL BE BROUGHT TO FULL BRIGHTNESS. REFER TO MANUFACTURER'S WIRING DIAGRAM FOR ADDITIONAL INFORMATION.

**EXISTING LIGHTING CONTROL CABINET**

PANEL: LC1A RELAYS: 8

RELAY	ZONE	SERVICE	CIRCUIT	CONTROL
1	a	WINDOW LIGHTING	R21A-2	NOTE 1.3
2	m	LOBBY LIGHTING	R21A-4	NOTE 1.3
3	p	COVE LIGHTING	R21A-6	NOTE 1.3
4	r	CORRIDOR LIGHTING	R21A-7	NOTE 1.3
5	x	EXTERIOR SIGNS	R21B-40	NOTE 1.4
6	z	EXTERIOR SIGNS	R21B-42	NOTE 1.4
7		SPARE		
8		SPARE		

- NOTES:
- 'ZONE' INDICATES SWITCH CONTROL ASSOCIATION
  - LIGHTING CONTROL PANEL SHALL BE PCI #LK-8 OR EQUAL WITH PHOTOCELL. PROVIDE 1-HOUR OF TRAINING TO END USER AT COMPLETION OF CONSTRUCTION.
  - LIGHTING ON/OFF VIA SWITCH INPUT, OFF VIA TIMED SWEEP.
  - LIGHTING SHALL BE ON VIA PHOTOCELL, OFF VIA TIMECLOCK. EXACT TIME OF DAY OFF SHALL BE COORDINATED WITH LANDLORD AND LEASE REQUIREMENTS PRIOR TO PROGRAMMING. COORDINATE EXACT LOCATION OF PHOTOCELL WITH BUILDING OWNER.



**1 ELECTRICAL LIGHTING PLAN**  
E-201 SCALE: 1/4" = 1'-0"

©2014 KingStubbins, Inc. All Rights Reserved. Project: Fidelity Real Estate Investor Center - Portland, ME. Drawing Title: ELECTRICAL LIGHTING PLAN. Date: 08/28/14. Drawing Number: E-201

2301 Chestnut Street  
Philadelphia, Pennsylvania  
19103  
P 215.569.2900  
F 215.569.5963  
W www.klingstubbins.com

Fidelity's Engineering Consultant:



Anderson, MA - Boston, MA - Amherst, MA  
Durham, NC - Charlotte, NC  
70 Fargo Street Boston, MA 02110-1964  
T:617-345-9885

Seals:

General Notes:

Project Title:



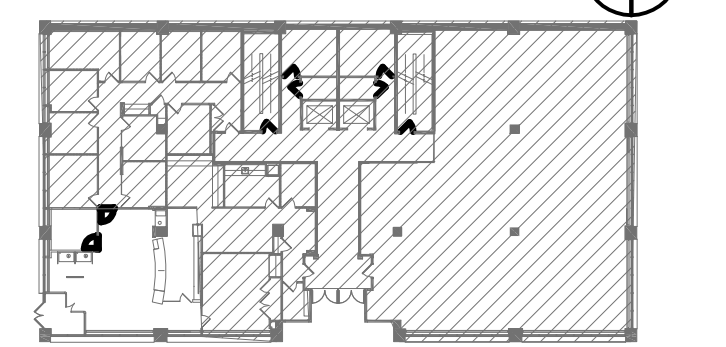
Fidelity Real Estate Company  
245 Summer Street  
Boston, MA 02110

Fidelity Investor Center  
3 Canal Plaza  
Portland, ME 04112  
Branch ID No. 120

Number	Description	Date
1	ISSUED FOR PERMIT & CONSTR.	03 OCT 14

Key Plan:

Project North



CAD File:  
Project No.: 20140629  
Copyright: 2014 KingStubbins, Inc or LLC

Drawing Sheet Title:  
**ELECTRICAL LIGHTING PLAN**

Drawing Sheet Number:  
**E-201**

Owner's Drawing Sheet No.: