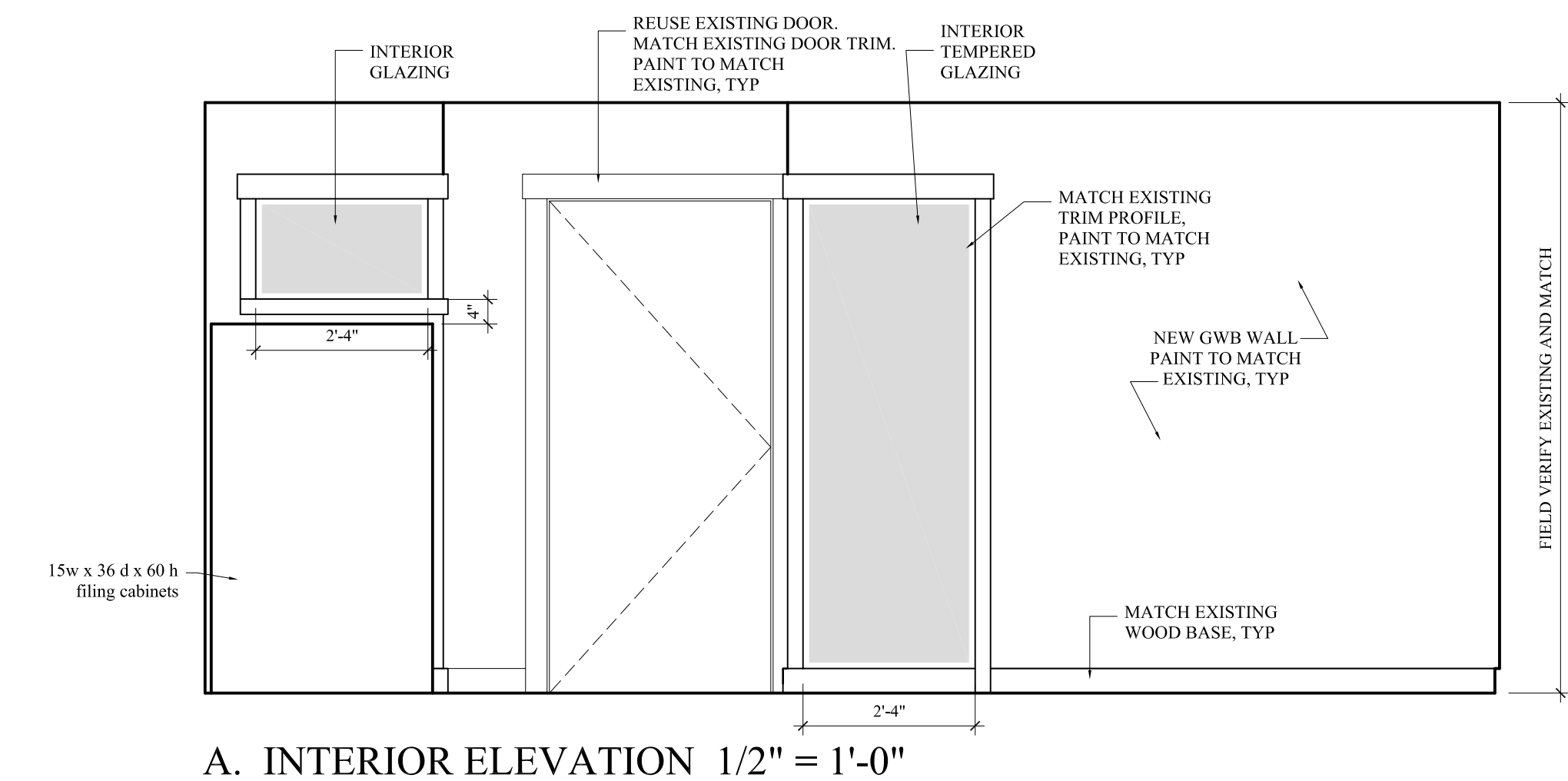


**MARK
MUELLER
ARCHITECTS**
A.I.A.
100 Commercial Street
Suite 205
Portland, Maine 04101
Phone: 207.774.9057
Email:
rfi@muellerarchitects.com

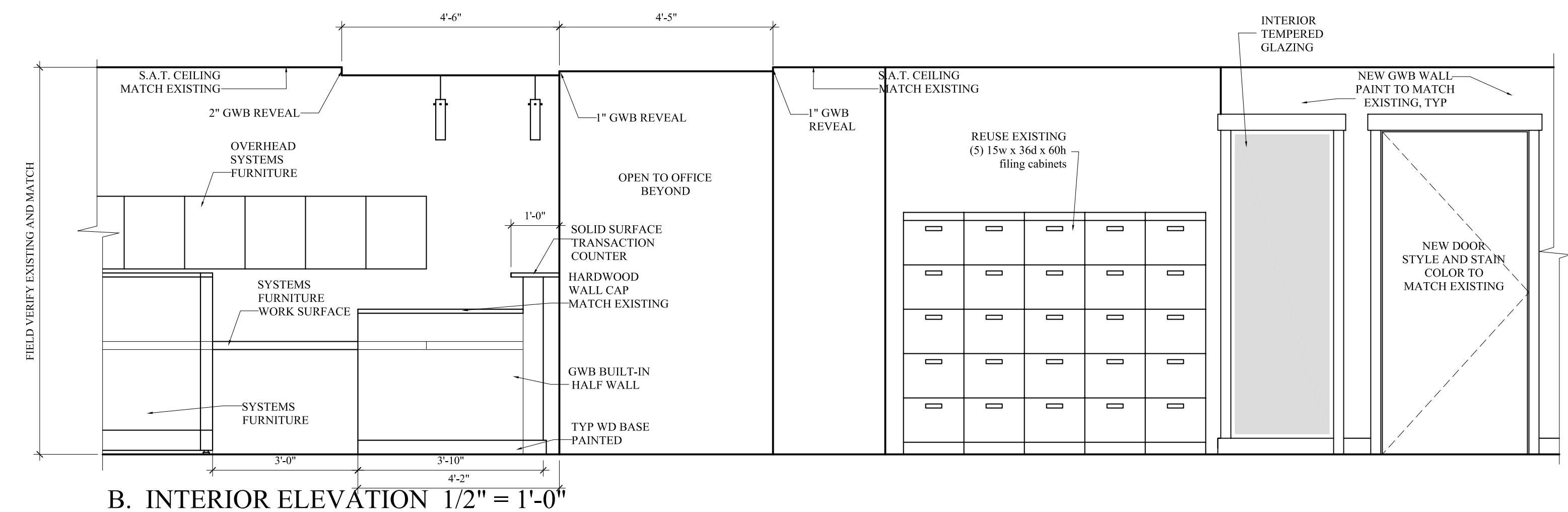
© COPYRIGHT 2014
MARK MUELLER ARCHITECTS

FORESIDE
6TH FLOOR, 3 CANAL PLAZA
PORTLAND, MAINE 04101

Interior Tenant Renovations:



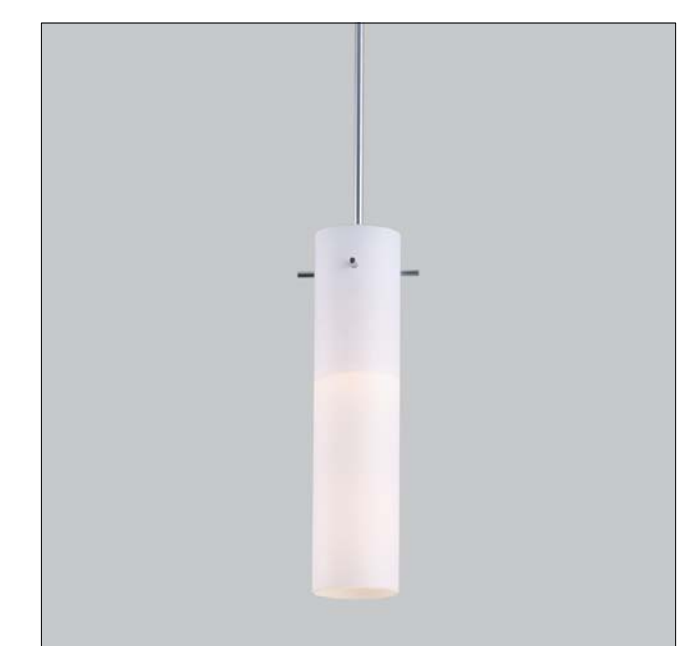
A. INTERIOR ELEVATION 1/2" = 1'-0"



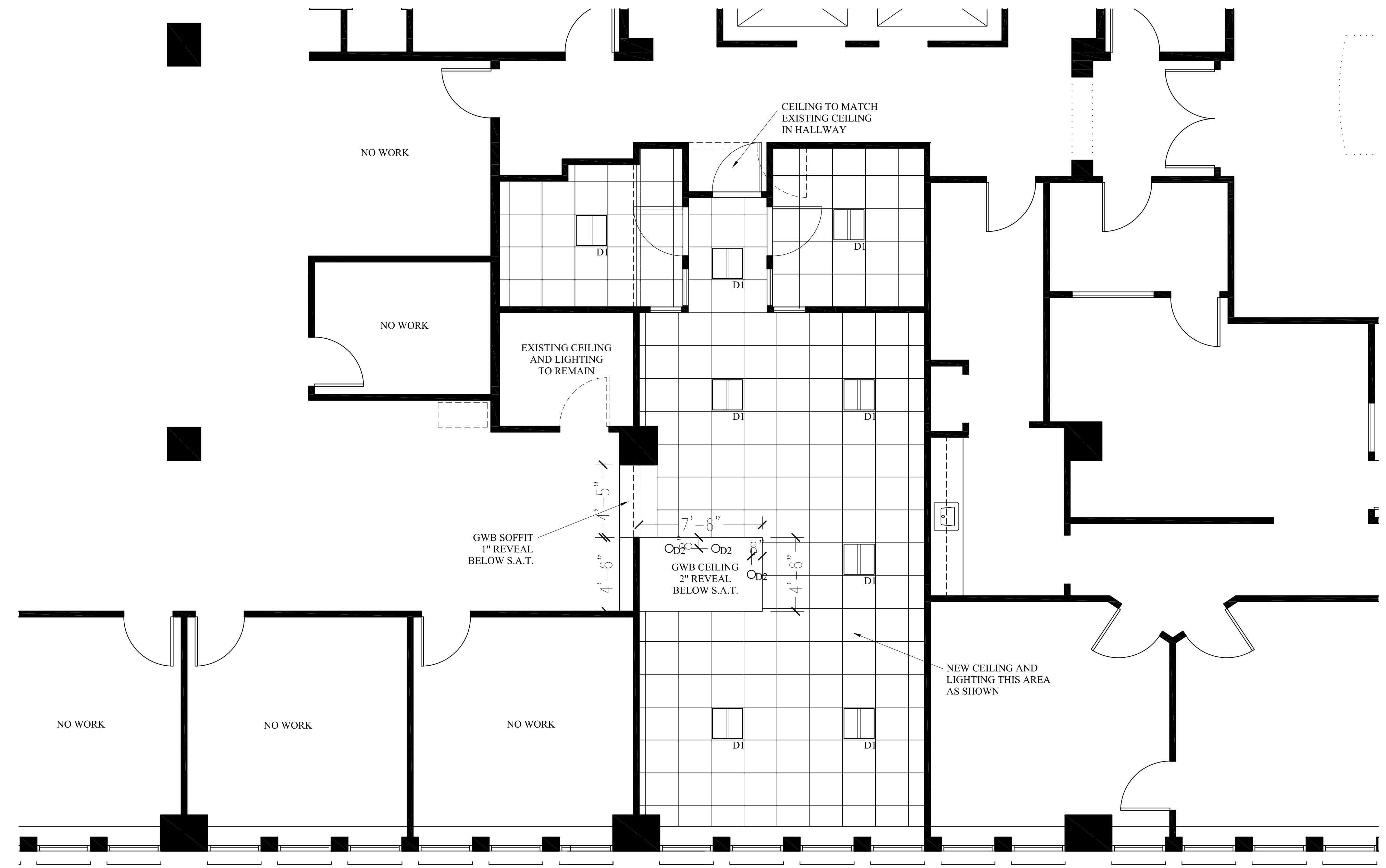
B. INTERIOR ELEVATION 1/2" = 1'-0"



FIXTURE TYPE "D1"
COOPER
METALUX WAVESTREAM
SKYRIDGE 2 x 2 LED



FIXTURE TYPE "D2"
EUREKA SILENE
MR 16 LAMP
CABLE MOUNTED
1" CANOPY (RC)



PROPOSED REFLECTED CEILING PLAN
SCALE: 1/4" = 1'-0"

PERMIT SET: APRIL 15, 2014

REVISIONS	DATE
	MARCH 11, 2014
PROJECT	6TH FLOOR OFFICE 3 CANAL PLAZA
DRAWN BY	JME
CHECK BY	MJM