

4 CANAL PLAZA

PORTLAND, ME

ARCHITECT:

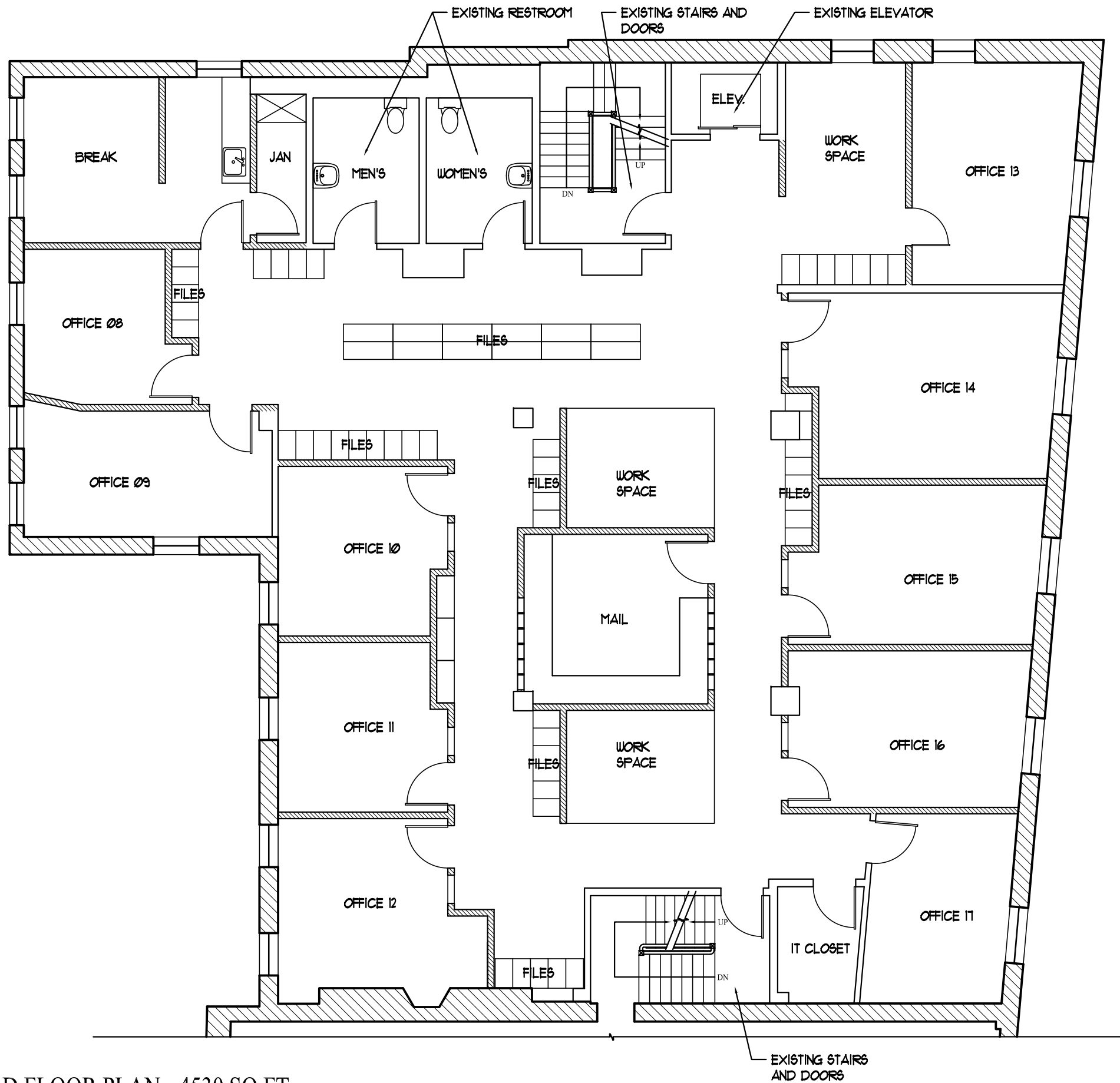
ARCHETYPE P.A.
48 UNION WHARF
PORTLAND, ME 04101
(207) 772-6022

CONSTRUCTION MANAGER:

WRIGHT-RYAN
10 DANFORTH ST
PORTLAND, ME 04101
(207) 773-3625

CODES:

GOVERNING CODE 2009 IEBC
LEVEL 2 CLASSIFICATION
NEW FINISHES AND ELECTRICAL WORK TO MEET IBC
WORK AREA SPRINKLED UNDER NFPA13
NO CHANGE TO VERTICAL SHAFTS
ENTRY AND TOILETS ARE CURRENTLY ACCESSIBLE
AND WILL REMAIN SO



NEW WALL - STUD	
EXISTING STUD WALL	
EXISTING MASONRY WALL	
DEMO AND REMOVE	

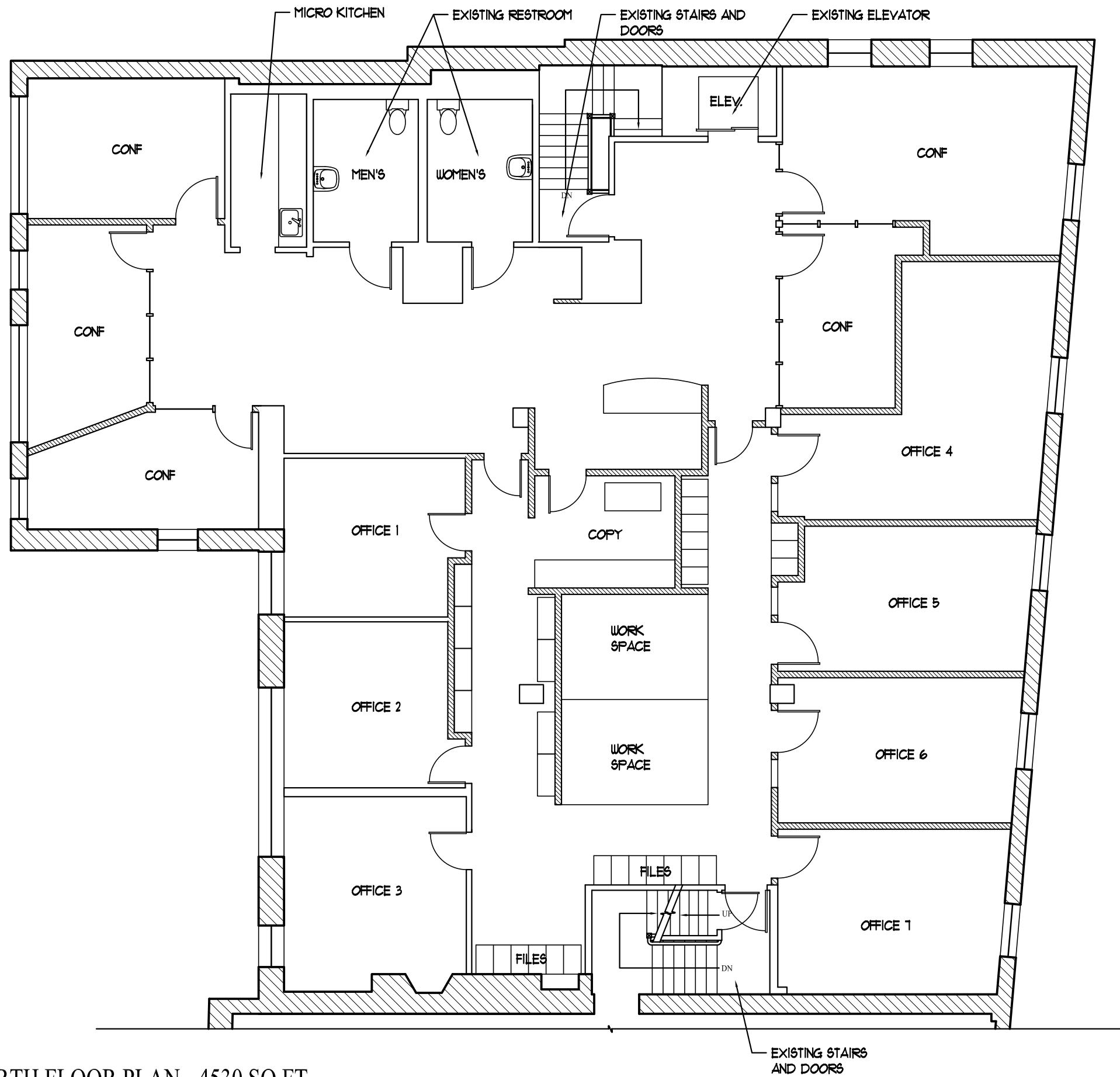
THIRD FLOOR PLAN - 4530 SQ FT
 SCALE: 1/8"=1'-0"

ARCHETYPE
 architects
 48 Union Wharf Portland, Maine 04101
 (207) 772-6022 Fax (207) 772-4056

Project:
 LeBlanc and Young
 4 Canal Plaza,
 Portland, ME

Date: 27 Dec. 2012
 Scale: 1/8" = 1'-0"
 THIRD FLOOR
 PLAN

A1.00



NEW WALL - STUD	
EXISTING STUD WALL	
EXISTING MASONRY WALL	
DEMO AND REMOVE	

FOURTH FLOOR PLAN - 4530 SQ FT
 SCALE: 1/8"=1'-0"

ARCHETYPE
 architects
 48 Union Wharf Portland, Maine 04101
 (207) 772-6022 Fax (207) 772-4056

Project:
 LeBlanc and Young
 4 Canal Plaza,
 Portland, ME

Date: 27 Dec. 2012
 Scale: 1/8" = 1'-0"
 FOURTH FLOOR
 PLAN

A1.00