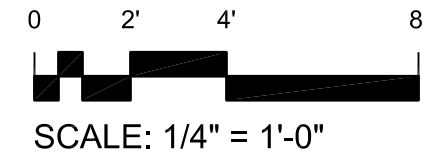


PROJECT
NORTH



SCALE: 1/4" = 1'-0"



NEW 2X4 ACOUSTIC CEILING
TO ACCOMMODATE NEW SPACE
(DEMOLITION OF WALLS), REUSE
EXISTING LIGHT FIXTURES
WHERE FEASIBLE

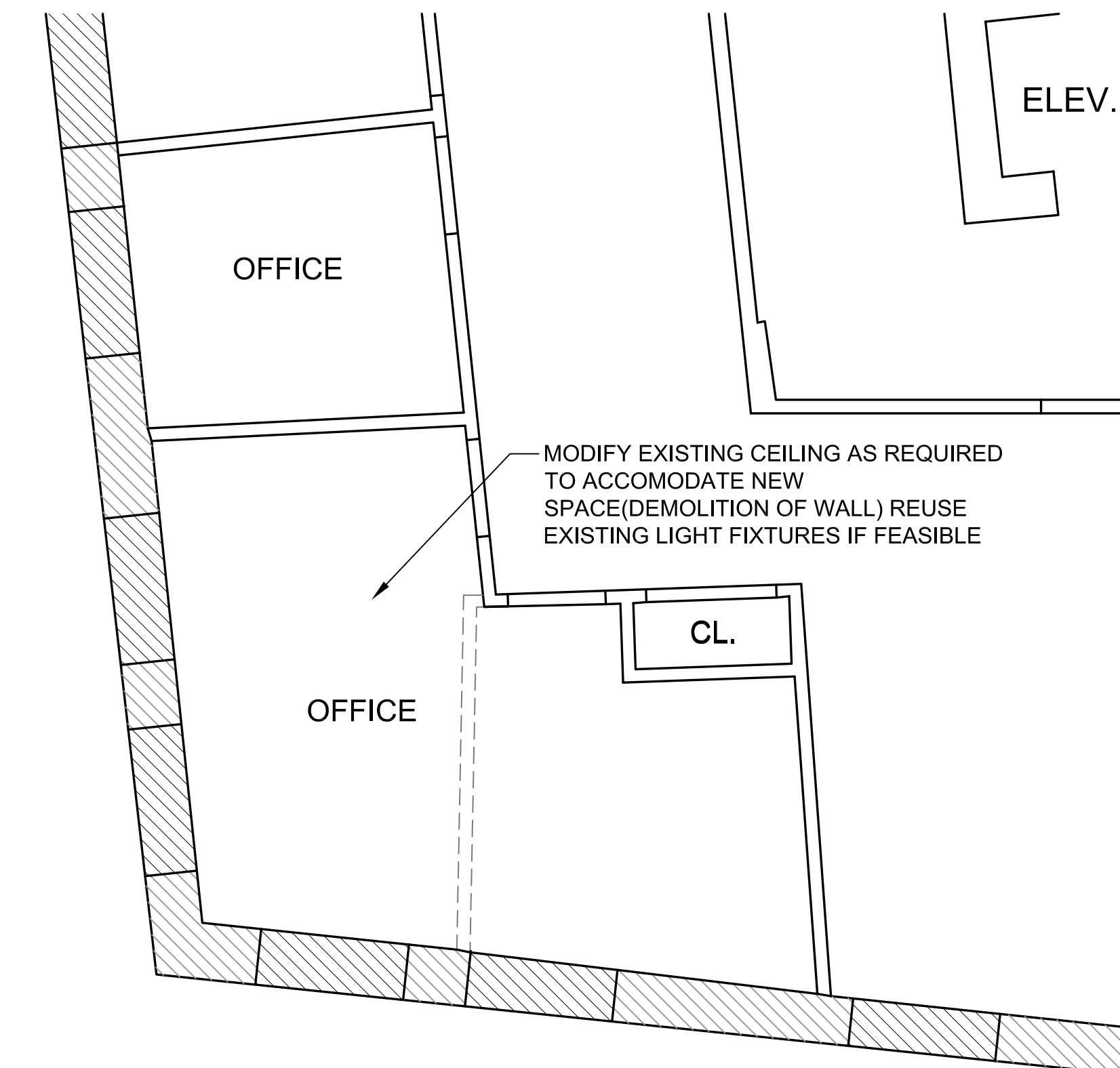
1 REFLECTED CEILING PLAN, 188 MIDDLE STREET, 4TH FLOOR
A1.2 1/4" = 1'-0"

NOTES:

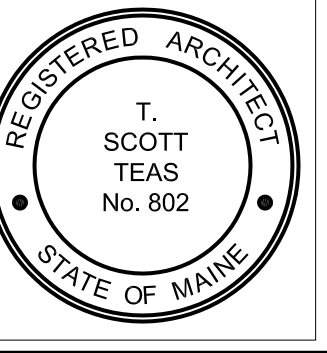
1. ALL EXISTING CEILINGS, LIGHT FIXTURES AND DIFFUSERS TO REMAIN UNLESS OTHERWISE NOTED
2. REPLACE STAINED OR DAMAGED CEILING PANELS TO MATCH EXISTING
3. ALL EXISTING LIGHT FIXTURES AND EMERGENCY / EXIT LIGHTING: RELAMP AS NEEDED AND CLEAN FIXTURES THOROUGHLY
4. RELOCATE ALL EXISTING AIR SUPPLY DIFFUSERS AND EXHAUST GRILLS AS NEEDED
5. CLEAN ALL EXISTING AIR SUPPLY DIFFUSERS AND EXHAUST GRILLS

LEGEND:

- ◻ EXISTING 24"X48" RECESSED LIGHT FIXTURE TO BE RELOCATED
- EXISTING DOWNLIGHT TO BE RELOCATED



1 REFLECTED CEILING PLAN, 178 MIDDLE ST, 2ND FLOOR
A1.2 1/4" = 1'-0"



© 2005 TFH ARCHITECTS

PRUDENTIAL
PORTLAND GROUP INSURANCE
178 MIDDLE STREET
PORTLAND, MAINE

TFH ARCHITECTS
100 COMMERCIAL STREET
PORTLAND MAINE 04101
TELEPHONE 207 775 6141
ARCHITECTURE PLANNING

CONSULTANTS:

REVISIONS:
A 10.17.05

DATE: 09.15.05

PROJECT No. 0508

DRAWN BY: SA

CHECKED BY: TST

SCALE: 1/4" = 1'-0"

SHEET TITLE:
REFLECTED
CEILING PLAN

A1.2