



DATE: 05/18/15
 WILLIAM B. HOPKINS
 REGISTERED PROFESSIONAL ENGINEER
 STATE OF MAINE

8/18/2009 1

ARCHTYPE, P.A.
 ARCHITECTS
 48 Lincoln Way West, Portland, Maine 04101
 (207) 773-4022 Fax (207) 773-4096

PROJECT: 10 EXCHANGE STREET
 10 EXCHANGE STREET
 PORTLAND, MAINE
 BASEMENT AND FIRST FLOOR LIFE SAFETY PLAN
 Issued For Permit - 18 August 2009
 26 January 2009
 Scale: 1/8" = 1'-0"

LOST

GENERAL NOTES

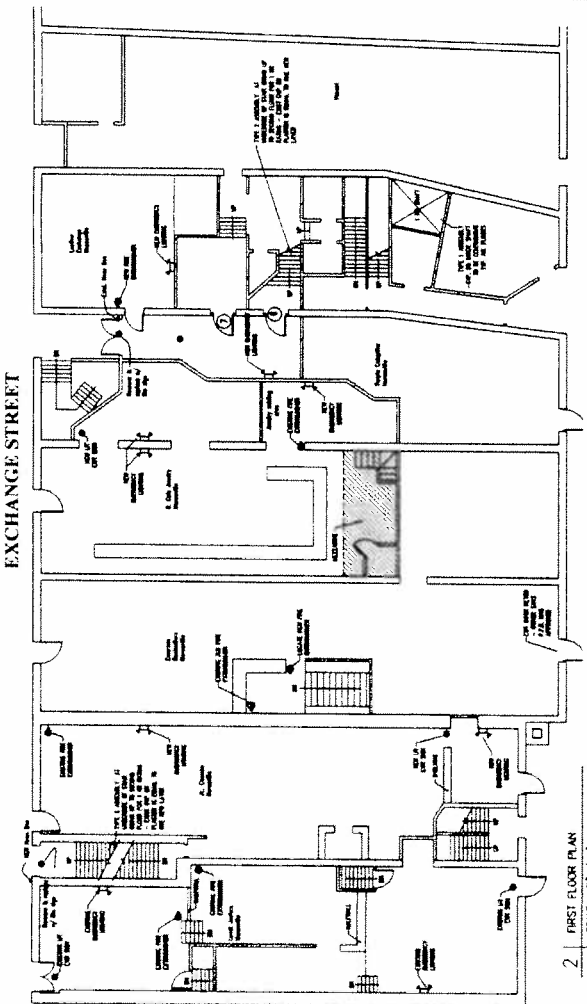
1. THE FIRE ALARM SYSTEM SHALL BE INSTALLED TO SPRINKLER SYSTEM ON 2ND FLOOR.
2. LOCAL PERMANENT HEAT AND SECURITY TO SPRINKLER CLOSET.
3. REPORT AND REPAIR AS REQUIRED.
4. EXISTING SPRINKLER SYSTEM.
5. EXISTING SYSTEM.
6. EXISTING SYSTEM.
7. EXISTING SYSTEM.
8. EXISTING SYSTEM.
9. EXISTING SYSTEM.
10. EXISTING SYSTEM.
11. EXISTING SYSTEM.
12. EXISTING SYSTEM.
13. EXISTING SYSTEM.
14. EXISTING SYSTEM.
15. EXISTING SYSTEM.
16. EXISTING SYSTEM.
17. EXISTING SYSTEM.
18. EXISTING SYSTEM.
19. EXISTING SYSTEM.
20. EXISTING SYSTEM.

FIRE DEPARTMENT SUBMITTAL

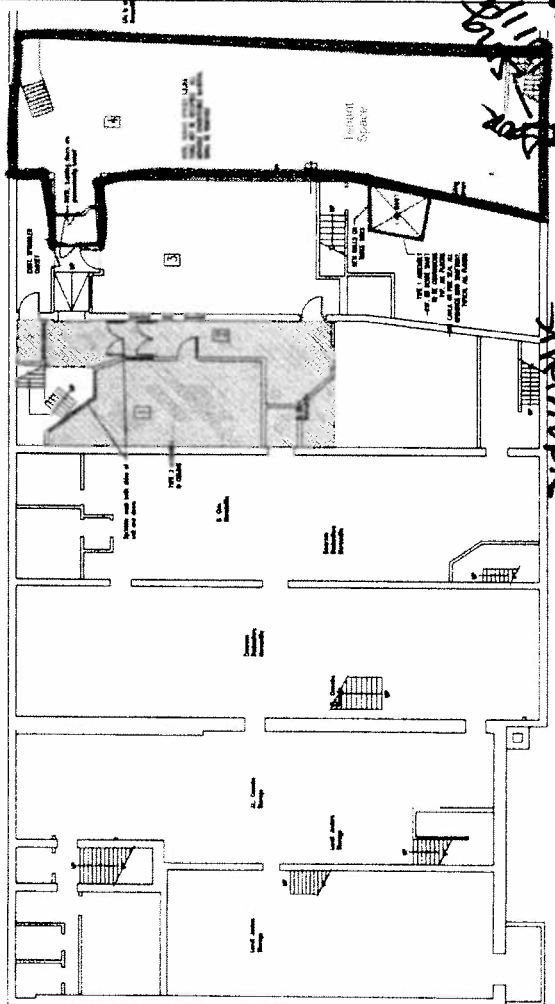
1. Fire resistance ratings of areas of egress are:
 - Staircase: 1 hour, 2 hours
 - Exit: 1 hour, 2 hours
2. Egress paths shall be provided for all occupants and shall be protected by the Fire Dept.
3. Location of egress paths are shown on 1st & 2nd floor plans.
4. Location of egress paths are shown on 1st & 2nd floor plans.
5. Location of egress paths are shown on 1st & 2nd floor plans.
6. Location of egress paths are shown on 1st & 2nd floor plans.
7. Location of egress paths are shown on 1st & 2nd floor plans.
8. Location of egress paths are shown on 1st & 2nd floor plans.
9. Location of egress paths are shown on 1st & 2nd floor plans.
10. Location of egress paths are shown on 1st & 2nd floor plans.
11. Location of egress paths are shown on 1st & 2nd floor plans.
12. Location of egress paths are shown on 1st & 2nd floor plans.
13. Location of egress paths are shown on 1st & 2nd floor plans.
14. Location of egress paths are shown on 1st & 2nd floor plans.
15. Location of egress paths are shown on 1st & 2nd floor plans.
16. Location of egress paths are shown on 1st & 2nd floor plans.
17. Location of egress paths are shown on 1st & 2nd floor plans.
18. Location of egress paths are shown on 1st & 2nd floor plans.
19. Location of egress paths are shown on 1st & 2nd floor plans.
20. Location of egress paths are shown on 1st & 2nd floor plans.

CODE ANALYSIS

Code	Section	Requirement	Compliance
IBC	103	Means of Egress	Compliant
IBC	105	Exit Discharge	Compliant
IBC	106	Exit Signs	Compliant
IBC	107	Exit Doors	Compliant
IBC	108	Exit Stairs	Compliant
IBC	109	Exit Ramps	Compliant
IBC	110	Exit Walkways	Compliant
IBC	111	Exit Enclosures	Compliant
IBC	112	Exit Protection	Compliant
IBC	113	Exit Lighting	Compliant
IBC	114	Exit Signs	Compliant
IBC	115	Exit Doors	Compliant
IBC	116	Exit Stairs	Compliant
IBC	117	Exit Ramps	Compliant
IBC	118	Exit Walkways	Compliant
IBC	119	Exit Enclosures	Compliant
IBC	120	Exit Protection	Compliant
IBC	121	Exit Lighting	Compliant
IBC	122	Exit Signs	Compliant
IBC	123	Exit Doors	Compliant
IBC	124	Exit Stairs	Compliant
IBC	125	Exit Ramps	Compliant
IBC	126	Exit Walkways	Compliant
IBC	127	Exit Enclosures	Compliant
IBC	128	Exit Protection	Compliant
IBC	129	Exit Lighting	Compliant
IBC	130	Exit Signs	Compliant
IBC	131	Exit Doors	Compliant
IBC	132	Exit Stairs	Compliant
IBC	133	Exit Ramps	Compliant
IBC	134	Exit Walkways	Compliant
IBC	135	Exit Enclosures	Compliant
IBC	136	Exit Protection	Compliant
IBC	137	Exit Lighting	Compliant
IBC	138	Exit Signs	Compliant
IBC	139	Exit Doors	Compliant
IBC	140	Exit Stairs	Compliant
IBC	141	Exit Ramps	Compliant
IBC	142	Exit Walkways	Compliant
IBC	143	Exit Enclosures	Compliant
IBC	144	Exit Protection	Compliant
IBC	145	Exit Lighting	Compliant
IBC	146	Exit Signs	Compliant
IBC	147	Exit Doors	Compliant
IBC	148	Exit Stairs	Compliant
IBC	149	Exit Ramps	Compliant
IBC	150	Exit Walkways	Compliant
IBC	151	Exit Enclosures	Compliant
IBC	152	Exit Protection	Compliant
IBC	153	Exit Lighting	Compliant
IBC	154	Exit Signs	Compliant
IBC	155	Exit Doors	Compliant
IBC	156	Exit Stairs	Compliant
IBC	157	Exit Ramps	Compliant
IBC	158	Exit Walkways	Compliant
IBC	159	Exit Enclosures	Compliant
IBC	160	Exit Protection	Compliant
IBC	161	Exit Lighting	Compliant
IBC	162	Exit Signs	Compliant
IBC	163	Exit Doors	Compliant
IBC	164	Exit Stairs	Compliant
IBC	165	Exit Ramps	Compliant
IBC	166	Exit Walkways	Compliant
IBC	167	Exit Enclosures	Compliant
IBC	168	Exit Protection	Compliant
IBC	169	Exit Lighting	Compliant
IBC	170	Exit Signs	Compliant
IBC	171	Exit Doors	Compliant
IBC	172	Exit Stairs	Compliant
IBC	173	Exit Ramps	Compliant
IBC	174	Exit Walkways	Compliant
IBC	175	Exit Enclosures	Compliant
IBC	176	Exit Protection	Compliant
IBC	177	Exit Lighting	Compliant
IBC	178	Exit Signs	Compliant
IBC	179	Exit Doors	Compliant
IBC	180	Exit Stairs	Compliant
IBC	181	Exit Ramps	Compliant
IBC	182	Exit Walkways	Compliant
IBC	183	Exit Enclosures	Compliant
IBC	184	Exit Protection	Compliant
IBC	185	Exit Lighting	Compliant
IBC	186	Exit Signs	Compliant
IBC	187	Exit Doors	Compliant
IBC	188	Exit Stairs	Compliant
IBC	189	Exit Ramps	Compliant
IBC	190	Exit Walkways	Compliant
IBC	191	Exit Enclosures	Compliant
IBC	192	Exit Protection	Compliant
IBC	193	Exit Lighting	Compliant
IBC	194	Exit Signs	Compliant
IBC	195	Exit Doors	Compliant
IBC	196	Exit Stairs	Compliant
IBC	197	Exit Ramps	Compliant
IBC	198	Exit Walkways	Compliant
IBC	199	Exit Enclosures	Compliant
IBC	200	Exit Protection	Compliant



2 | FIRST FLOOR PLAN
 SCALE 1/8"=1'-0"



1 | BASEMENT PLAN
 SCALE 1/8"=1'-0"

Where Ceiling is 10' High
Up 8' Ceiling is 10' High
Where Ceiling is 10' High
Exchange St
Approx
Buildings