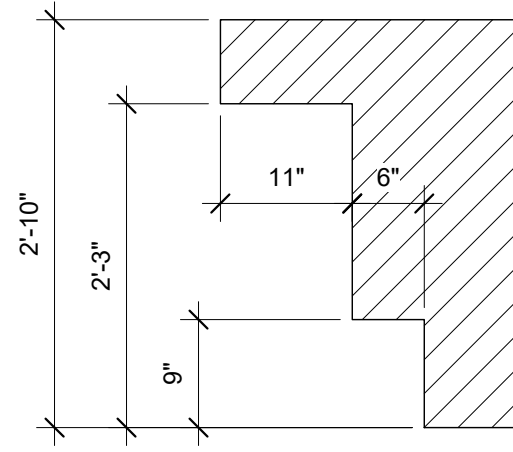
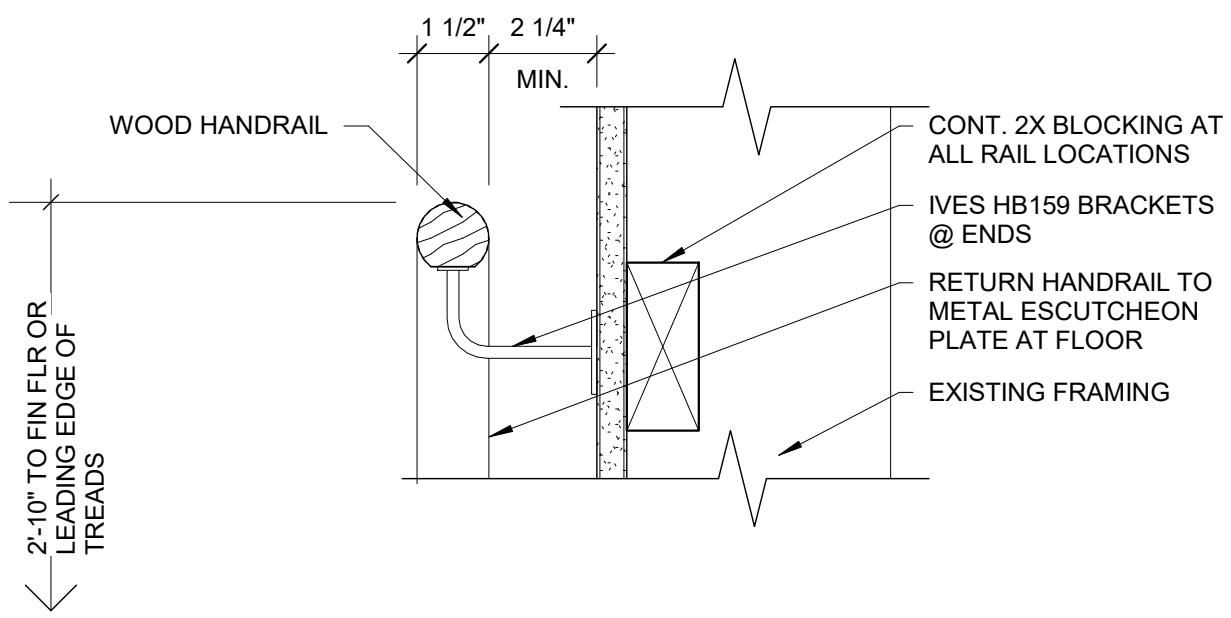


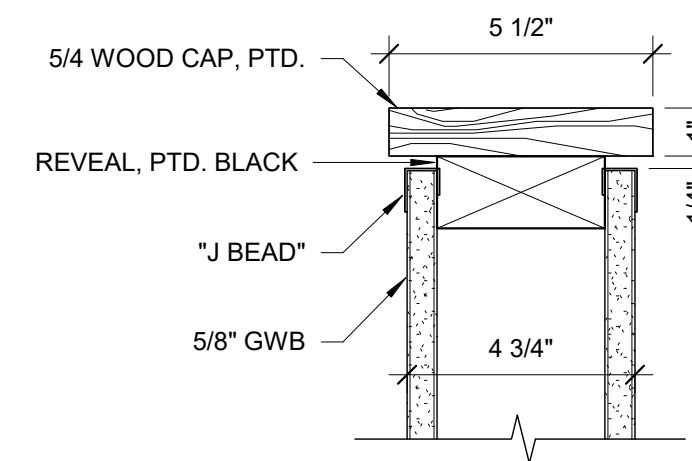
# EXCHANGE STREET



**3 | ADA BAR TOP DIMENSIONS**  
 3/4" = 1'-0"

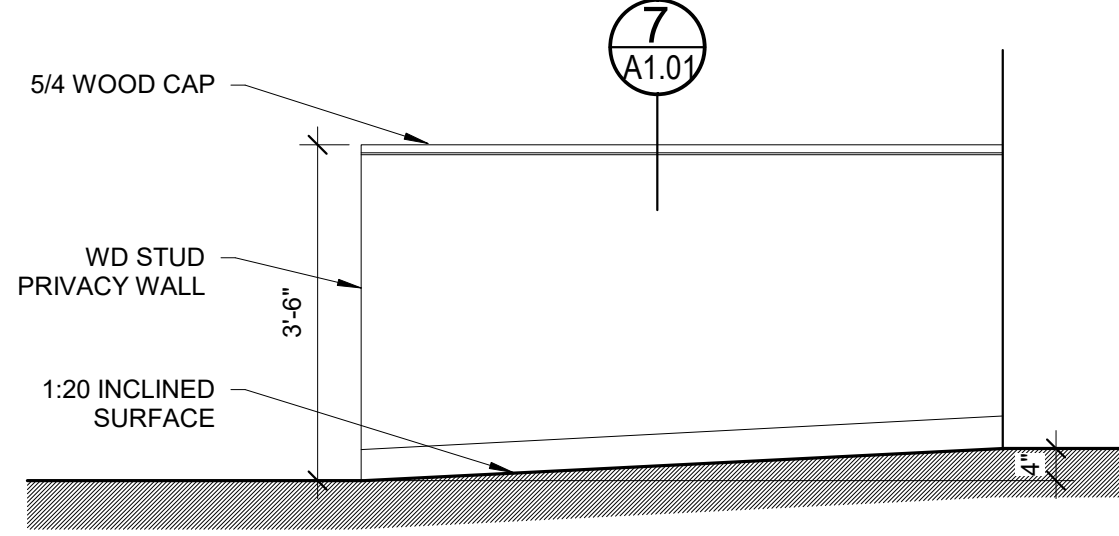


**5 | STAIR - WOOD HANDRAIL DETAIL**  
 3" = 1'-0"

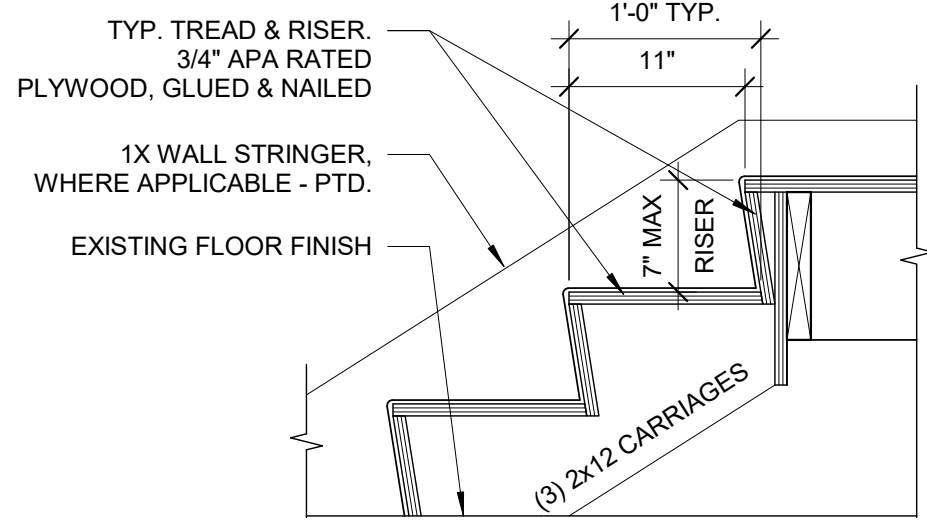


**7 | WALL CAP DETAIL**  
 3" = 1'-0"

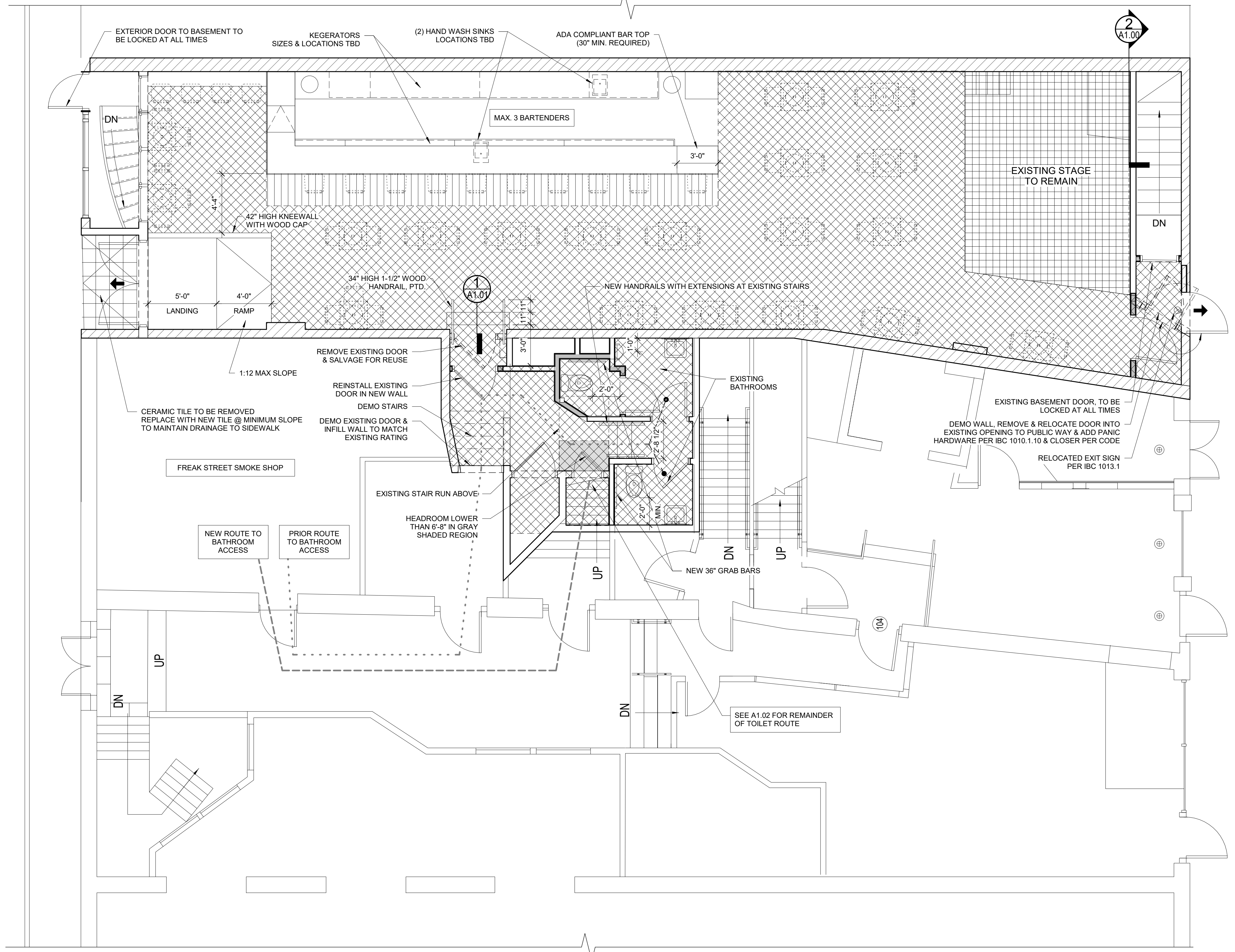
A HANDRAIL IS NOT REQUIRED PER ADA 405.8 & IBC 1012.8 WHICH STATE THAT HANDRAILS ARE ONLY REQUIRED AT RAMPS WITH RISES GREATER THAN 6 INCHES.



**4 | TYP. LOW RISE RAMP**  
 1/2" = 1'-0"



**1 | TYP. STAIR DETAIL**  
 1" = 1'-0"



NEW WALL - STUD & GYP. BD.	[Symbol]
EXISTING CMU WALL	[Symbol]
EXISTING STUD WALL OR FLOOR	[Symbol]
EXISTING MASONRY WALL	[Symbol]
DEMO AND REMOVE	[Symbol]
EXISTING DOOR	[Symbol]
NEW DOOR	[Symbol]

OCCUPANT LOAD ALLOWANCES	
[Symbol]	OCCUPANT LOAD AT BAR SEATING - 1 SEAT/2 FEET OF BAR 33 LF - 16 PERSONS + 3 BARTENDERS - 19 PERSONS
[Symbol]	ASSEMBLY WITHOUT FIXED SEATS (UNCONCENTRATED) - 15 NET 1035 SF - 69 PERSONS
[Symbol]	STAGES & PLATFORMS - 15 NET 187 SF - 12 PERSONS

**2 | 1ST FLOOR - NEW WORK PLAN**  
 1/4" = 1'-0"  
 0 1'-0" 2'-0" 4'-0" 8'-0"