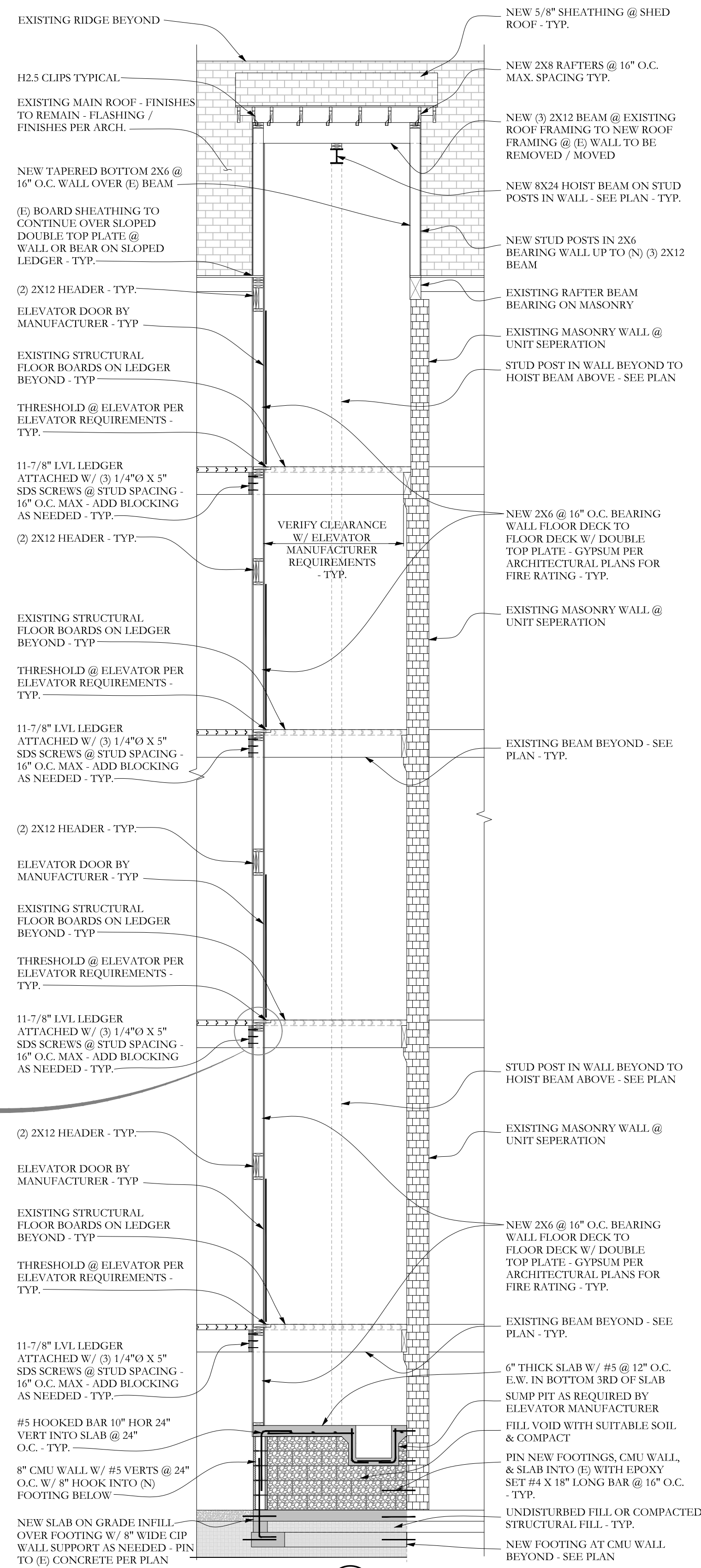
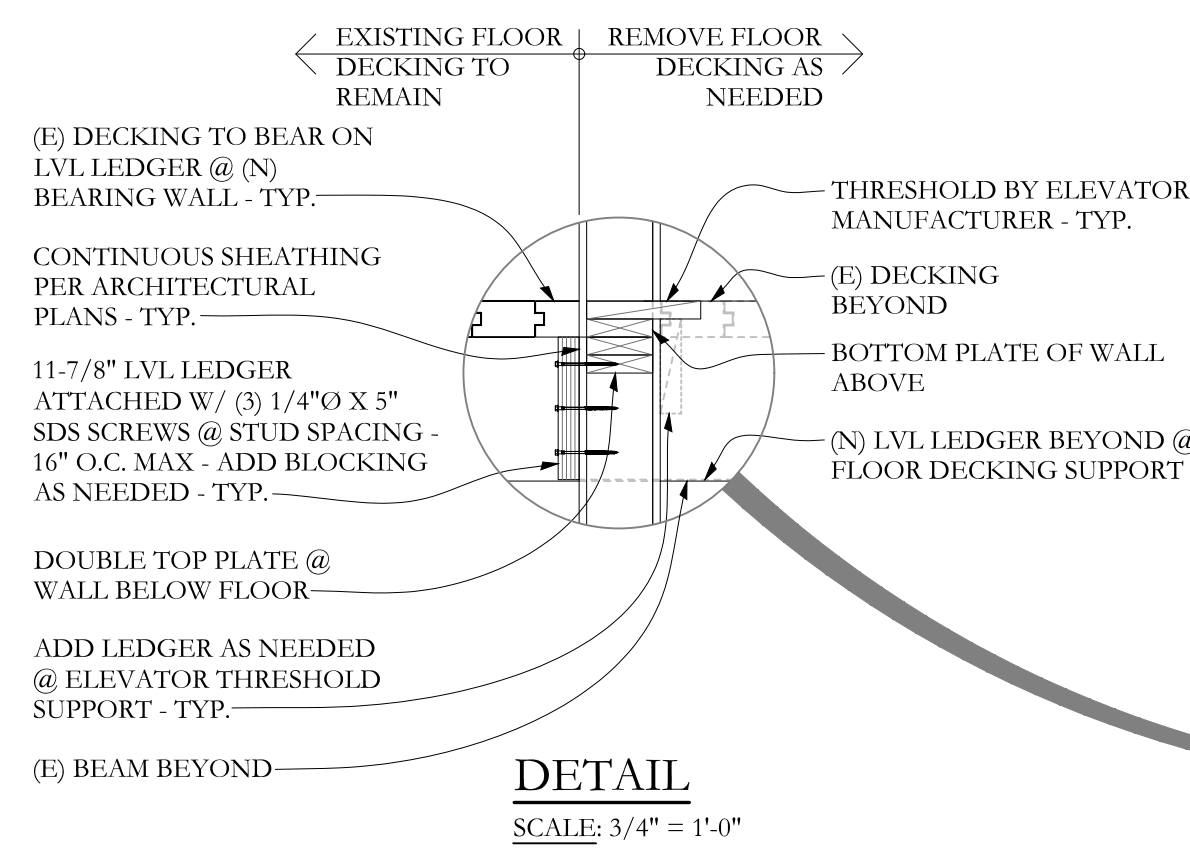


KEY PLAN  
N.T.S.

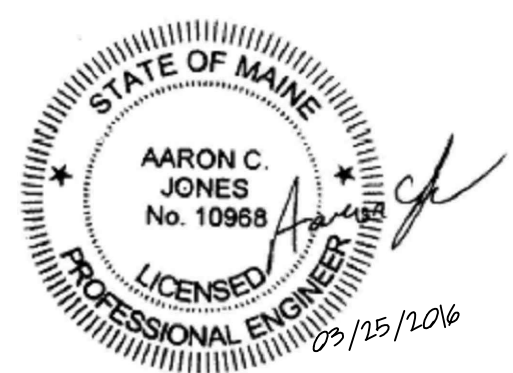


SECTION A-S2.1 1/4"=1'-0"

**Structural Integrity**  
Consulting Engineers, Inc.  
SI # 15-0093

77 Oak Street  
Portland, ME, 04101  
p. 207-771-4614  
f. 866-793-7835  
www.structuralinteg.com

BUILD WITH CONFIDENCE.  
© 2012 Structural Integrity Consulting Engineers, Inc.



ARCHETYPE, P.A.  
ARCHITECTS

48 Union Wharf Portland, Maine 04101  
(207) 772-6022 Fax (207) 772-4056

Date 26 March 2016

Scale as noted

SECTION

Project: 10 EXCHANGE STREET

10 EXCHANGE STREET  
PORTLAND, MAINE

S2.1