

FIRE DEPARTMENT SUBMITTAL

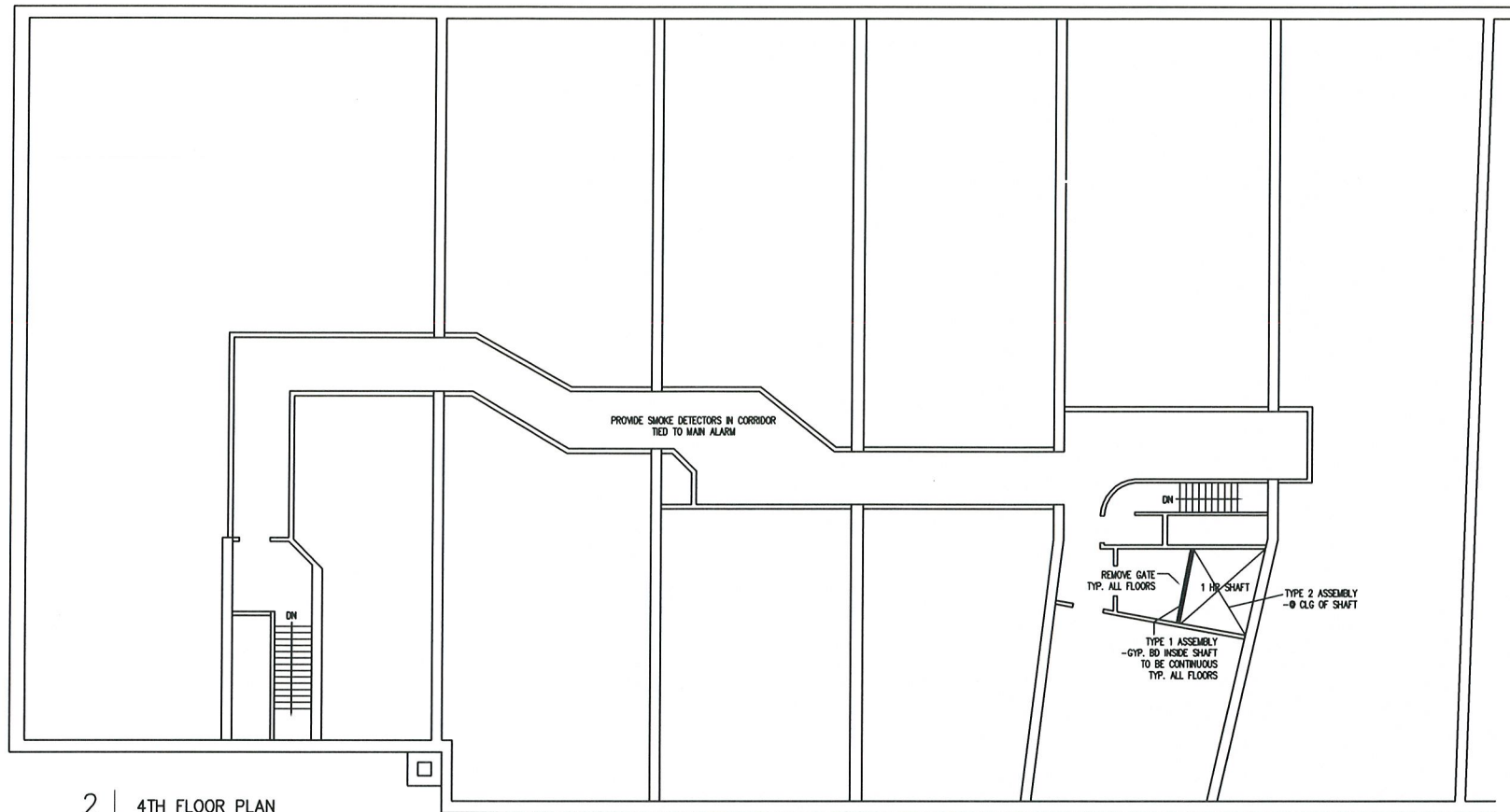
- A- Fire resistance ratings of means of egress are:
Corridor= 0
Stairs = 1 hour +/-
Exit discharge floor @ south stair = 1 hours
- B- Travel distance- See 2nd floor plan
- C- Number & location of portable fire extinguishers shall be as shown on plan and as directed by the Portland Fire Dept.
- D- Location of emergency lighting is shown on 2nd floor plan
- E- Location of exit signs are shown on 1st & 2nd floor plan
- G- Location of exit signs are shown on 1st & 2nd floor plan
- H- Location of jewelry repair operations shown for Cole & Lovell

GENERAL NOTES

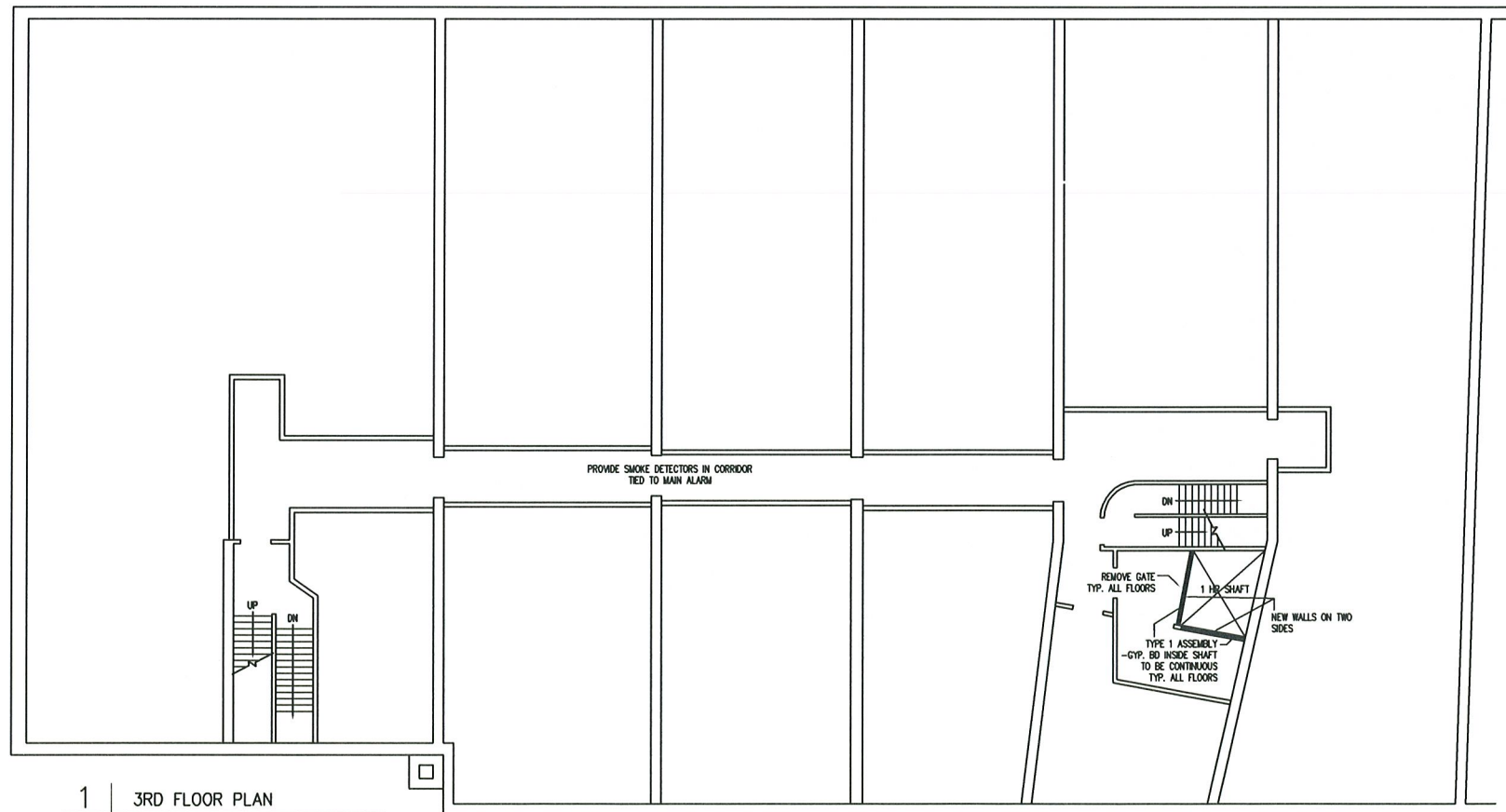
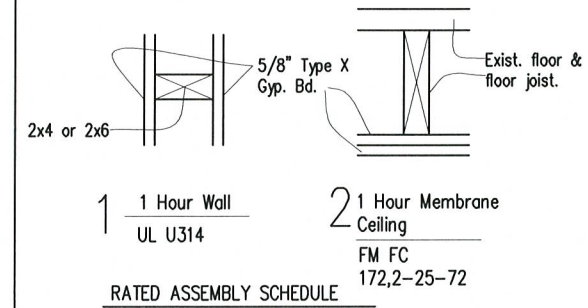
SPRINKLER SYSTEM
 1. INSTALL NFPA 13 SPRINKLER SYSTEM ON 2 FLOOR.
 2. INSTALL PERMANENT HEAT AND SECURITY TO SPRINKLER CLOSET.
 3. INSPECT AND REPAIR AS REQUIRED EXISTING SPRINKLER SYSTEM

ELECTRICAL SYSTEM
 1. ELECTRICAL CONTRACTOR TO SURVEY BASEMENT, 1ST & 2ND FL., NOTING AND FIXING ALL VISIBLE ELEC. CODE VIOLATIONS.
 2. ALL EXITS SIGNS AND EMERGENCY LIGHTS ARE TO BE PUT IN WORKING ORDER OR REPLACED.

FIRE ALARM SYSTEM
 1. FIRE ALARM CONTRACTOR TO SURVEY BASEMENT, 1ST & 2ND FL. REPAIR OR REPLACE ANY EXISTING ALARM COMPONENTS AS REQUIRED. 2ND FLOOR TO HAVE BOTH MANUAL AND SPRINKLER ACTIVATED ALARMS. BASEMENT AND 1ST FLOOR TO HAVE SPRINKLER ACTIVATED ALARM ONLY.
 2. 3RD AND 4TH FLOORS TO HAVE SMOKE DETECTORS
 IN HALL WAY TIED TO ALARM SYSTEM.
 3. PLANS OF EXISTING AND PROPOSED WORK SHALL BE REVIEWED WITH THE PORTLAND FIRE DEPARTMENT PRIOR TO COMMENCEMENT OF WORK



2 | 4TH FLOOR PLAN
 SCALE: 1/8"=1'-0"



1 | 3RD FLOOR PLAN
 SCALE: 1/8"=1'-0"

**ARCHETYPE, P.A.
 ARCHITECTS**

48 Union Wharf Portland, Maine 04101
 (207) 772-6022 Fax (207) 772-4056

Date
 26 January 2009
 Issued for Permit - 18 August 2009

Scale
 1/8" = 1'-0"

3RD & 4TH FL
 LIFE SAFETY PLAN

Project:
 10 EXCHANGE STREET
 PORTLAND, MAINE

LS03