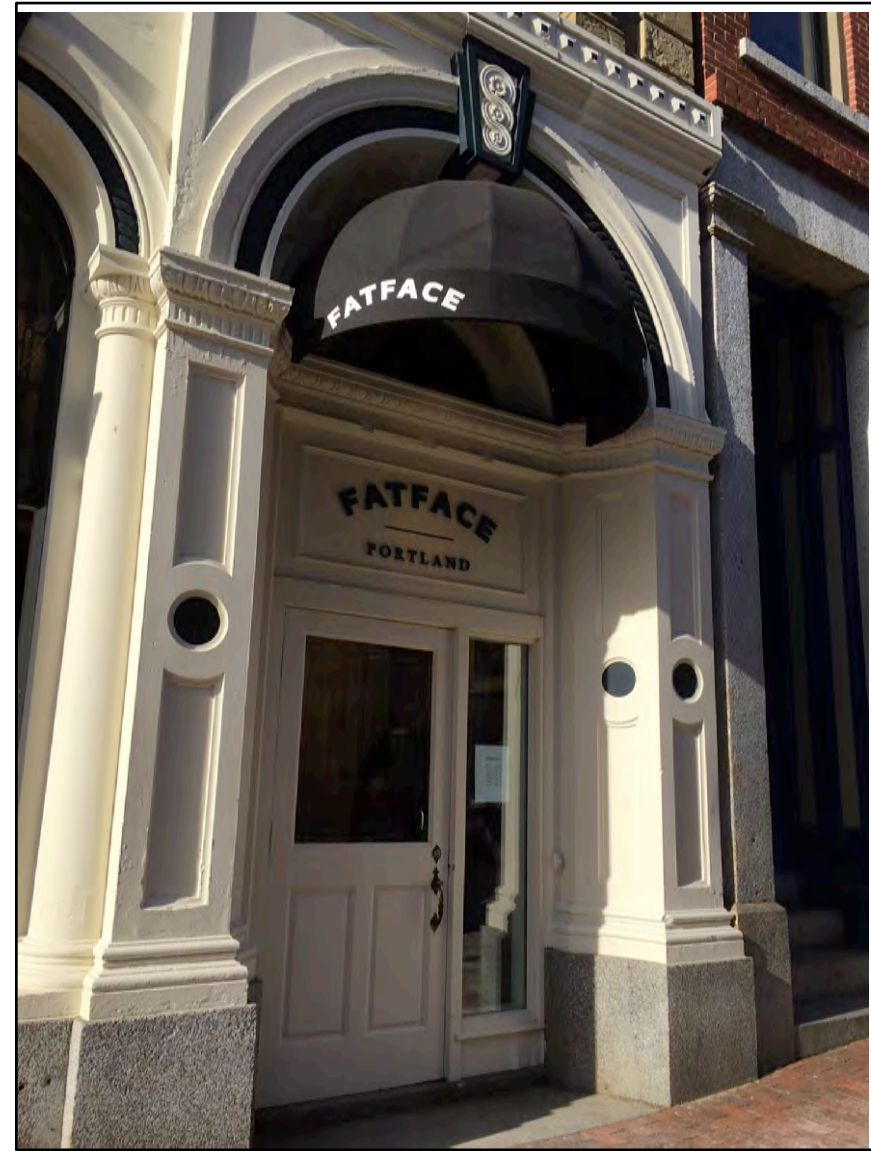
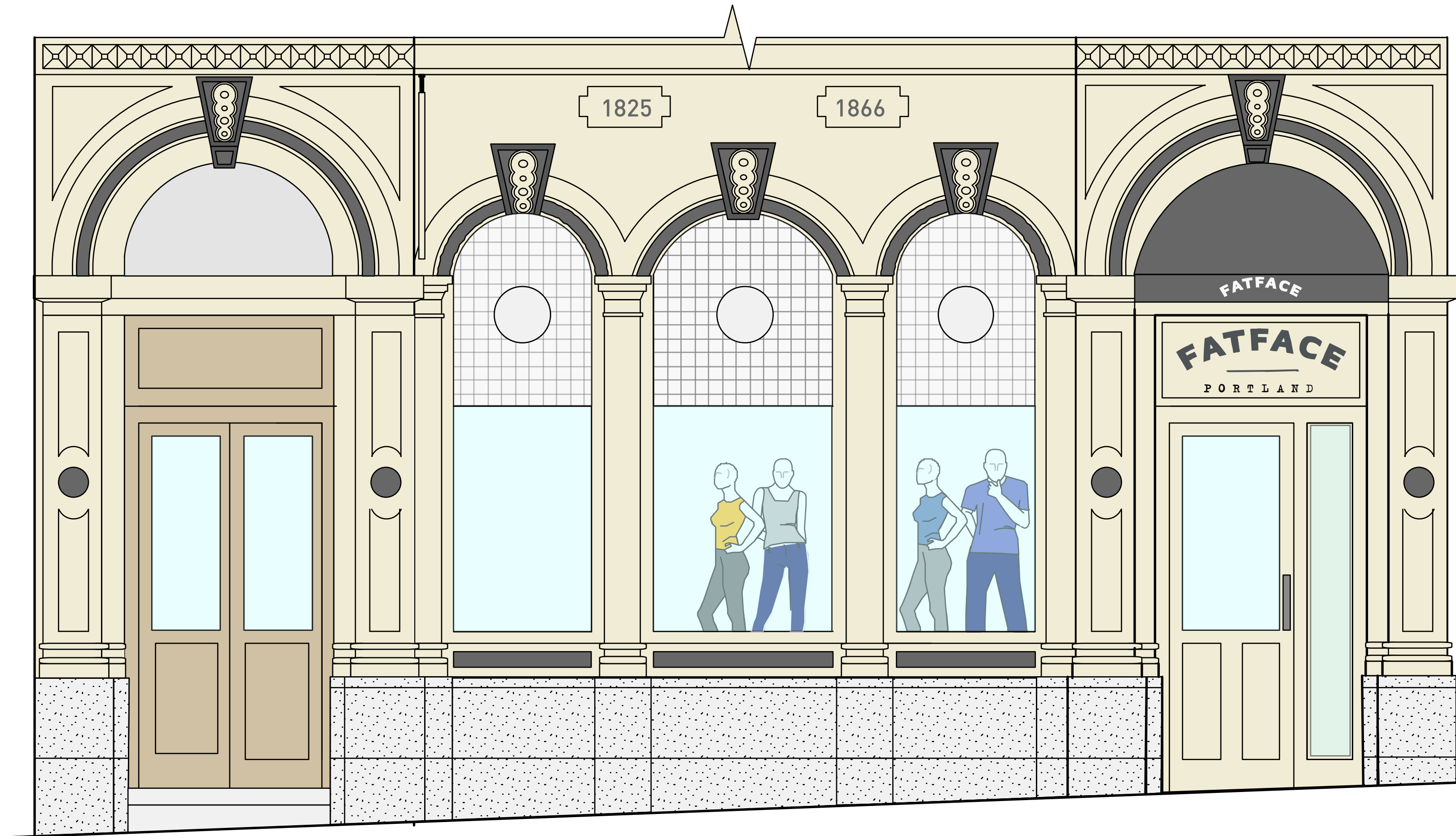


PORTLAND MA

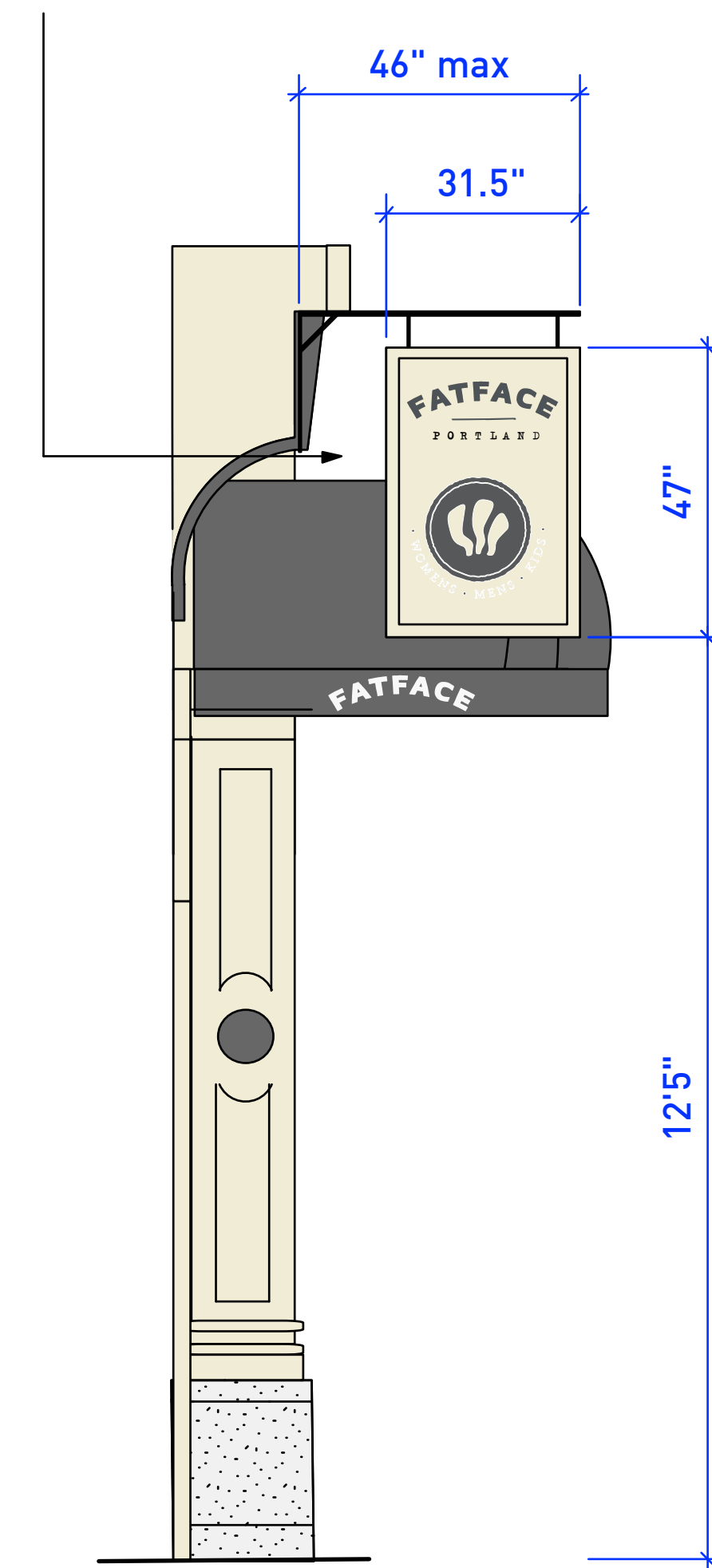


existing shop front

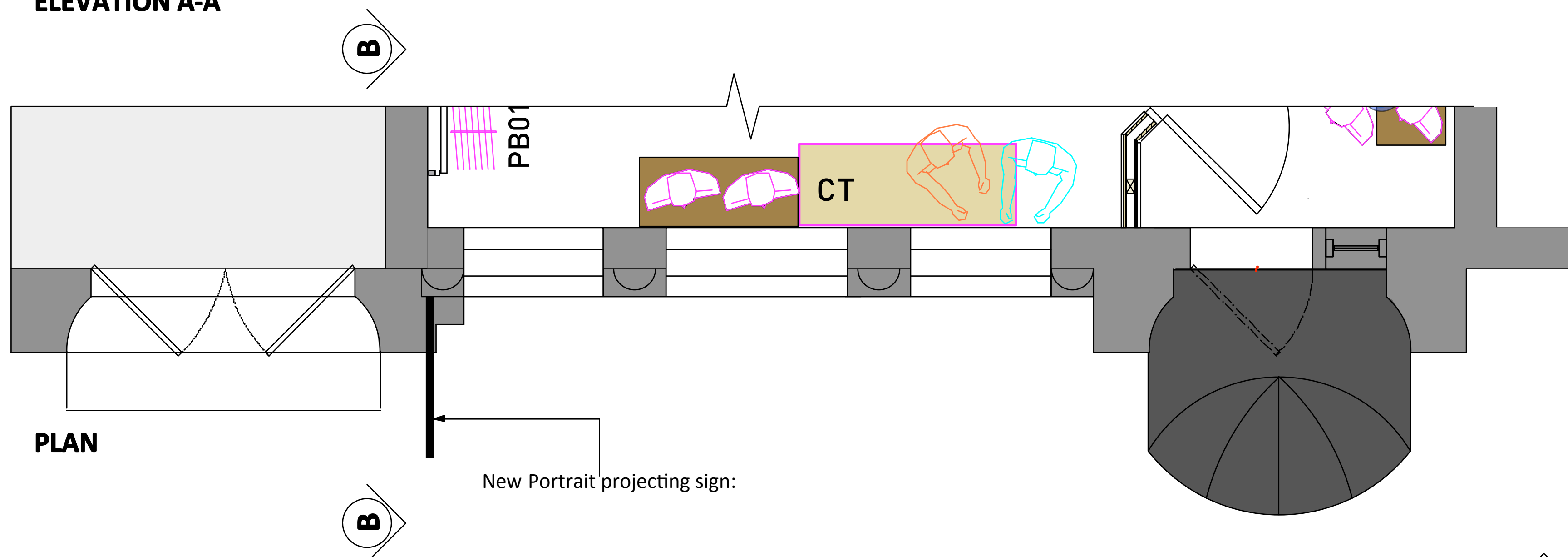


ELEVATION A-A

New Portrait projecting sign: to be marine ply timber (Or similar) with 50mm border finished to match RAL 1013. Circle to be handpainted stencil to match RAL 7016. Feathers to be finished to match RAL 7016. FATFACE, circle, line & 'PORTLAND' to be handpainted to match RAL 7016 external satin finish and matt lacquer applied. New bracket required, signage contractor to ensure fit for purpose.



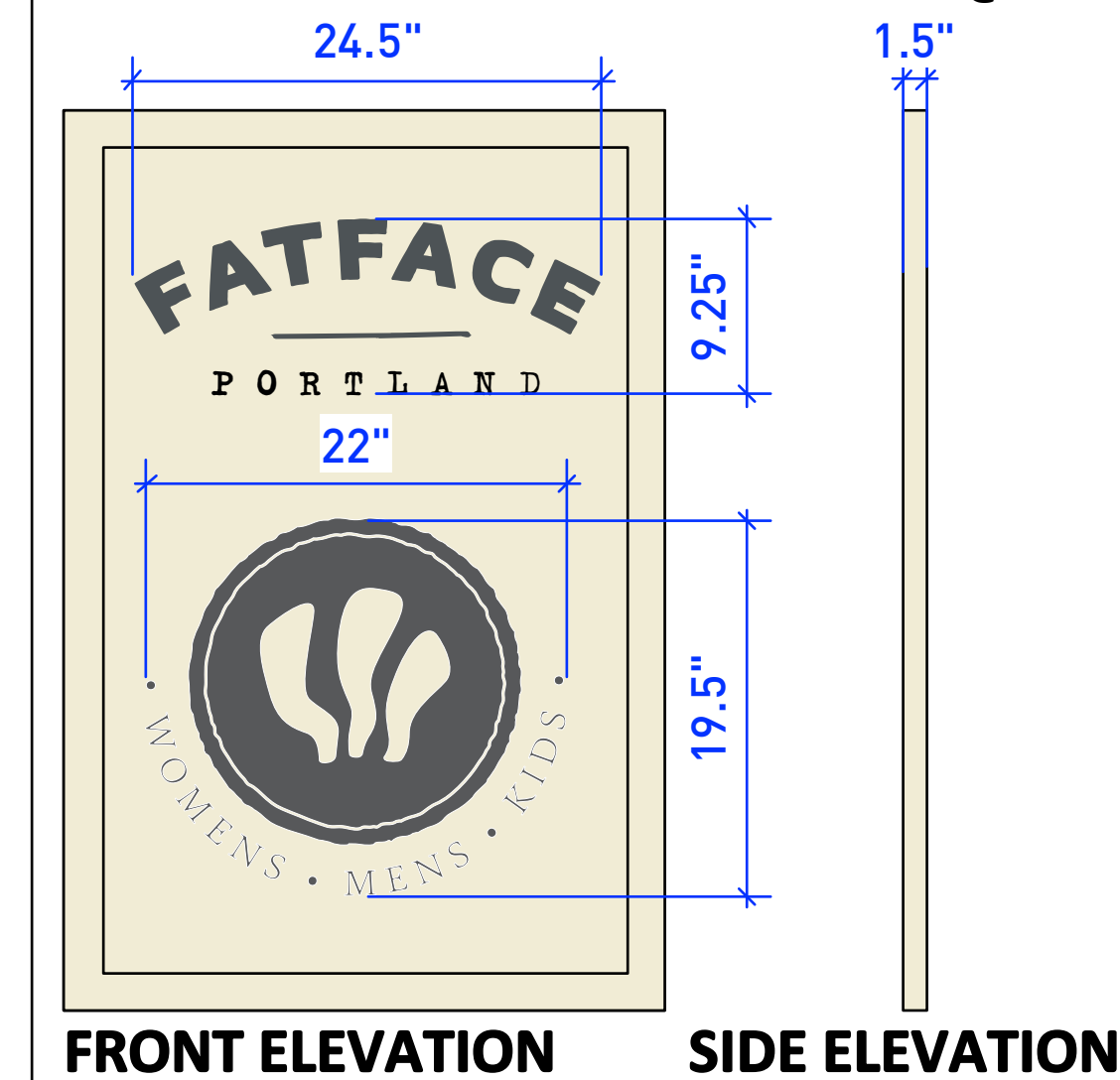
SIDE ELEVATION B-B



PLAN

New Portrait projecting sign:

PROJECTING SIGN DETAIL - scale 1:10@A1



FRONT ELEVATION

SIDE ELEVATION

RAL 1013

RAL 7016

NB: EXACT DIMENSIONS SUBJECT TO SURVEY



SCALE: 1:25@A1 / 1:50@A3

Drawing no: 15.2001.01-3

7 July 2016