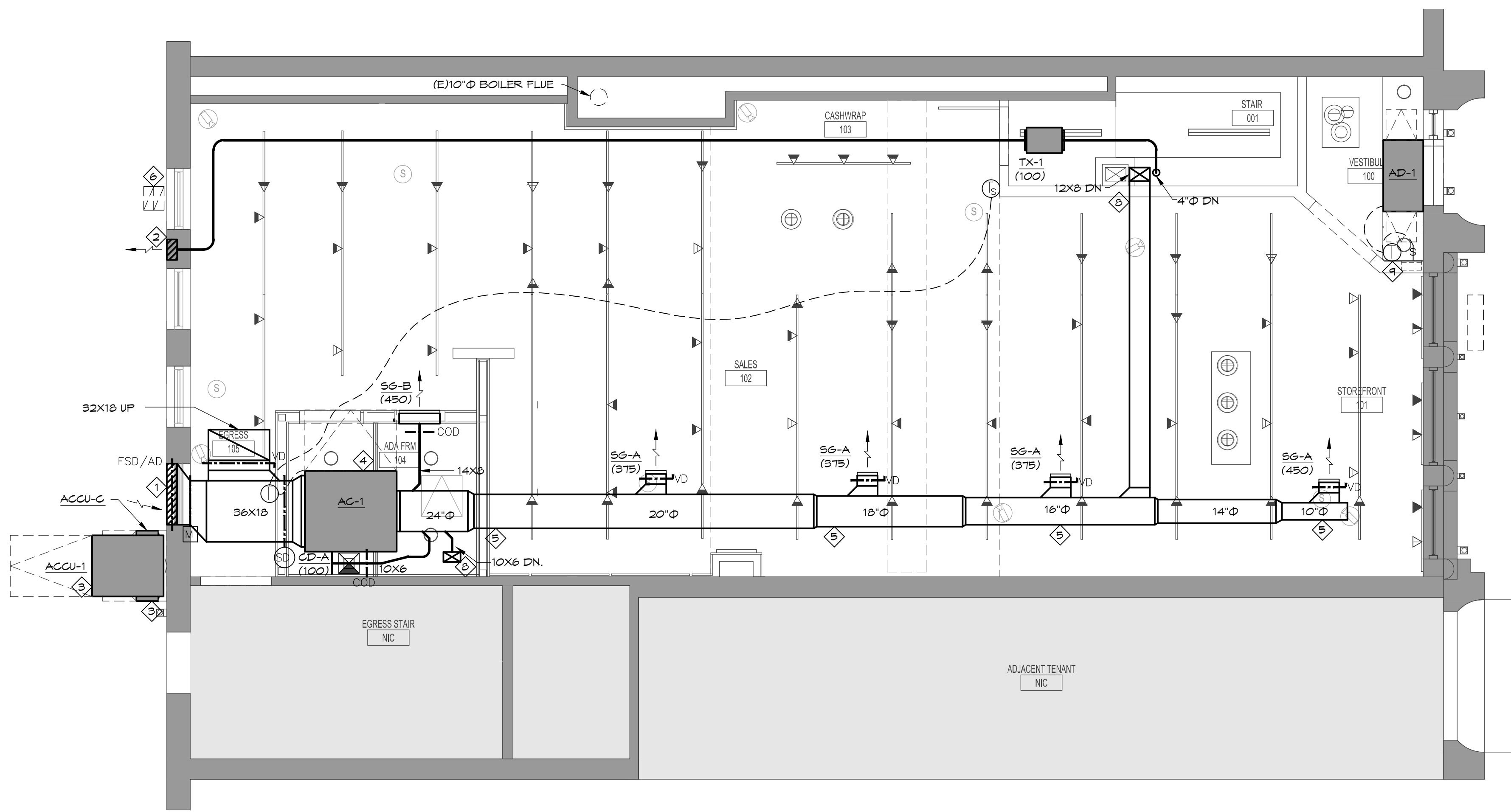


PLAN NOTES:

1. ALL DUCTWORK SHALL BE ROUTED AS PER FIELD CONDITIONS PRESENT. CONTRACTOR TO COORDINATE MECHANICAL WORK WITH ALL TRADES (INCLUDING ELECTRICAL, PLUMBING, SPRINKLER, ETC.) AND INDICATE SIZES AND HEIGHTS ON SHEET METAL DRAWING. REPORT ANY DISCREPANCIES TO THE ENGINEER.
2. CONTRACTOR SHALL INSTALL ALL NEW DUCTWORK AS HIGH AS POSSIBLE TO THE STRUCTURE ABOVE. ALL NEW DUCTWORK SHALL BE PROPERLY SECURED AS PER MECHANICAL SPECIFICATIONS.
3. CONTRACTOR TO REFER TO MANUFACTURER'S RECOMMENDATIONS FOR PROPER EQUIPMENT CLEARANCES AND ACCESSORIES. INDICATE EQUIPMENT CLEARANCES ON SHEET METAL SHOP DRAWINGS.
4. CONTRACTOR TO PROVIDE ACOUSTIC DUCT LINING ON SUPPLY AND RETURN DUCTWORK UP TO 20 FEET FROM EACH AC UNIT.
5. SHEET METAL DUCTWORK DIMENSIONS SHOWN ARE CLEAR INSIDE DIMENSIONS.
6. SEE MECHANICAL SPECIFICATIONS FOR EXTERNAL INSULATION REQUIREMENTS ON SUPPLY AND RETURN DUCTWORK.
7. PROVIDE DUCT-MOUNTED MANUAL VOLUME DAMPERS FOR ALL BRANCH DUCTS AND CONNECTIONS TO SUPPLY AIR OUTLETS. PROVIDE VOLUME DAMPERS FOR ALL DUCTED RETURN AND EXHAUST AIR INTAKES.
8. COORDINATE LOCATIONS AND DETAILS OF VISIBLE DEVICES AND AIR OUTLETS WITH THE ARCHITECT PRIOR TO INSTALLATION.
9. THERMOSTAT LOCATIONS SHALL BE COORDINATED WITH CLIENT, ARCHITECT AND ENGINEER PRIOR TO INSTALLATION.
10. COORDINATE ALL HVAC EQUIPMENT WITH OTHER TRADES (I.E. PLUMBING, SPRINKLER, ELECTRICAL POWER AND LIGHTING, ARCHITECTURAL, ETC.) PROVIDE COORDINATED SHOP DRAWINGS INDICATING ALL OF THE MANUFACTURER'S RECOMMENDED CLEARANCES UNOBSTRUCTED FOR REVIEW PRIOR TO INSTALLATION.

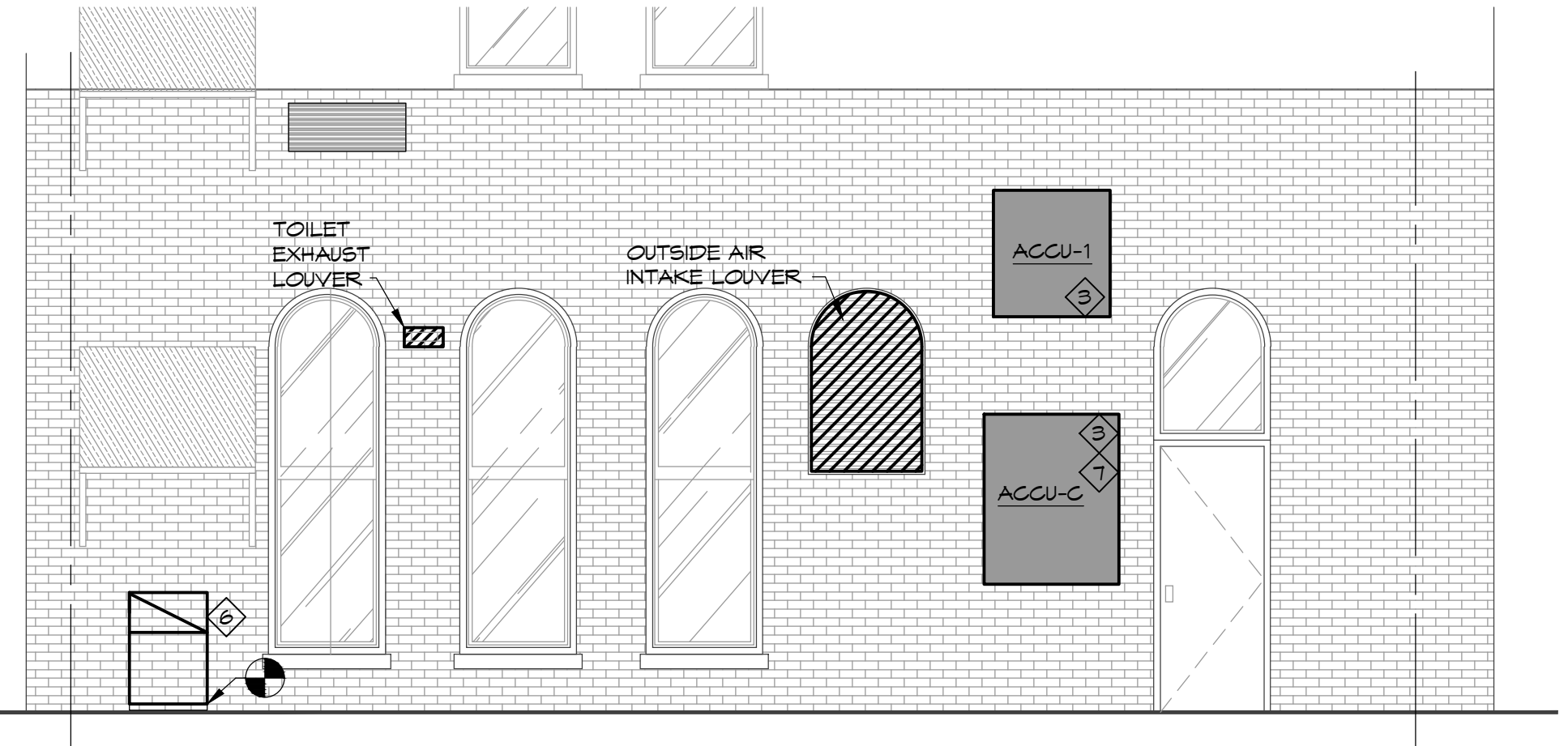
REFERENCE NOTES:

1. PROVIDE ARCHED 4 SQUARE FOOT TOTAL AREA OUTSIDE AIR LOUVER WITH 50% FREE AREA.
2. PROVIDE 0.25 SQUARE FOOT TOILET EXHAUST LOUVER WITH 50% FREE AREA. TOILET EXHAUST LOUVER SHALL BE A MINIMUM OF 10'-0" AWAY FROM ANY OUTSIDE AIR INTAKE.
3. PROVIDE AIR COOLED SPLIT SYSTEM HEAT PUMP CONDENSER ACCU-1 AND ACCU-C. CONDENSERS SHALL BE MOUNTED ON STEEL SUPPORT ON EXTERIOR WALL AT BACK OF STORE. COORDINATE UNIT WEIGHT AND MOUNTING WITH STRUCTURAL ENGINEER.
4. PROVIDE SPLIT SYSTEM AIR HANDLER AC-1 WITH DX COOLING COIL AND HOT WATER HEATING COIL.
5. DUCTWORK TO BE SPIRAL ROUND TYPE WITH INTERNAL DUCT INSULATION. COORDINATE FINISH WITH ARCHITECT.
6. EXISTING OUTSIDE AIR GOOSENECK TO BE REMOVED. CONTRACTOR SHALL REPLACE EXISTING COMBUSTION AIR INTAKE. VERIFY IN FIELD WHICH GOOSENECK SERVES BOILER ROOM.
7. PROVIDE ACCU-C WITH CUSTOM METAL ENCLOSURE TO ENSURE UNIT CANT BE VANDALIZED.
8. COORDINATE DUCTWORK PENETRATIONS TO FLOOR BELOW WITH STRUCTURAL ENGINEER.
9. AIR DOOR CONTROLS SHALL BE RECESSED IN WALL. COORDINATE WITH ARCHITECT.



H. V. A. C. G R O U N D F L O O R P L A N

SCALE: 6" = 1'-0"



**B U I L D I N G R E A R
E X T E R I O R E L E V A T I O N**

SCALE: 6" = 1'-0"

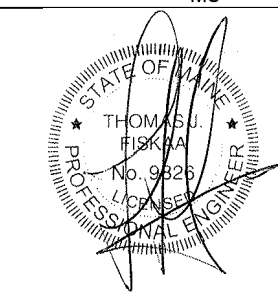
Issue	Date	Issue	Date
A. ISSUE FOR LL REVIEW & HISTORIC REVIEW	07/10/2015		
B. ISSUE FOR DEMO PERMIT	07/20/2015		
C. ISSUE FOR PERMIT	07/24/2015		

Project:
FAT FACE PORTLAND
34 EXCHANGE STREET
PORTLAND, ME 04104

Drawing Title
H.V.A.C. GROUND FLOOR PLAN

Project No.	Drawn By	Date	Scale
15.102.00			

Seal: MS Floor(s):



Drawing No.
M-301