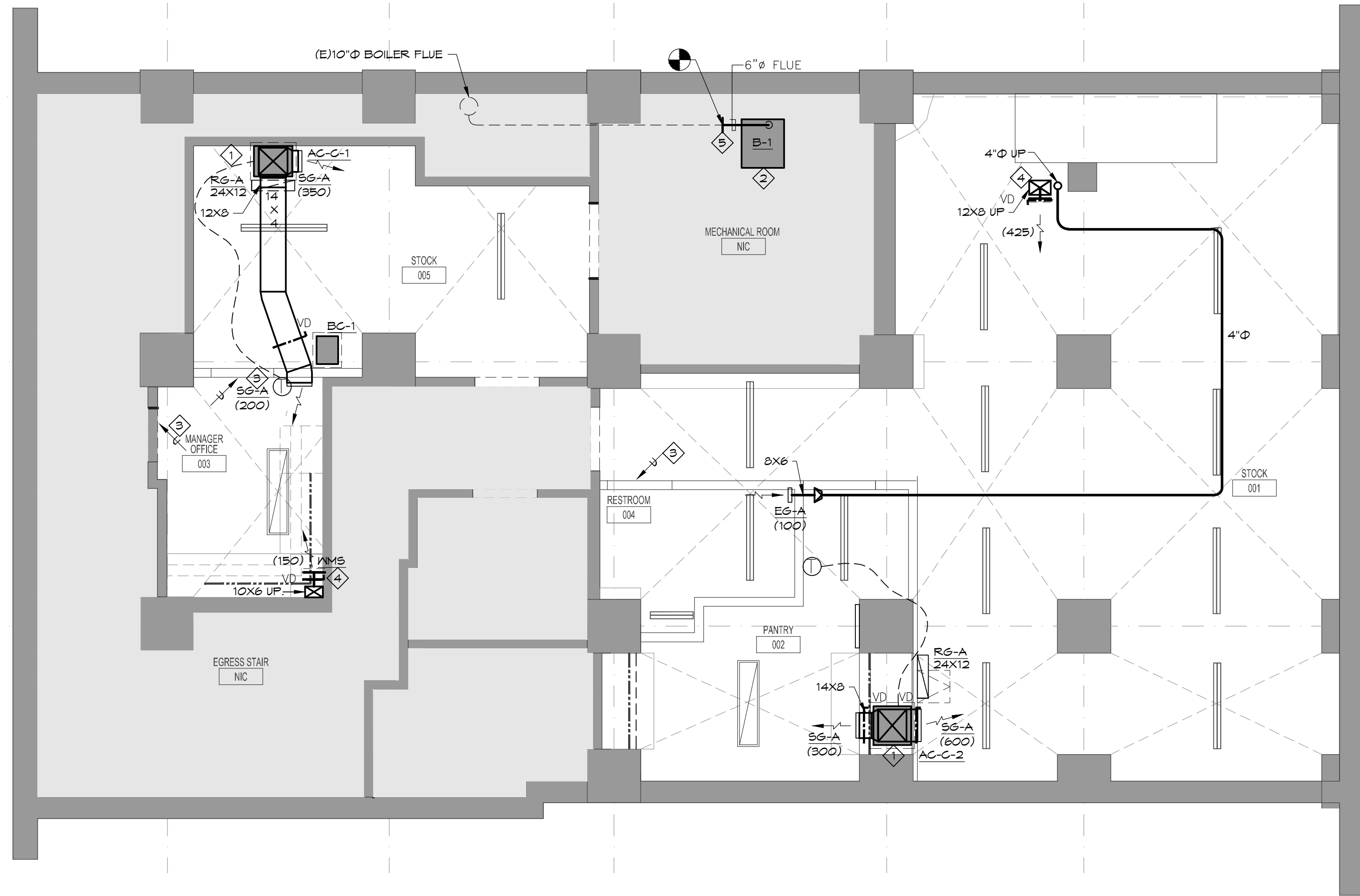


CLIENT/OWNER/TENANT  
FAT FACE LTD  
1-3 RIDGWAY HAVANT, PO9 1QJ  
UNITED KINGDOM  
CONTACT: DAVID LILLEY  
TEL: 0044.2392.441100  
E: DAVID.LILLEY@FATFACE.COM

DESIGNER  
BOX OF FROGS LTD  
2 WILLOW PARK STROKE POGES BUCKS SL2 4ES  
CONTACT: SARAH MALCOM-RICHARDS  
TEL: 007748606997  
E: SARAH@BOXOFFROGS.WEB.COM

MEP ENGINEER  
FISKAA  
589 8TH AVENUE  
NEW YORK, NY, 10018  
CONTACT: ERIC MARTINSEN  
TEL: 212.736.9500  
E: EMARTINSEN@FISKAA.COM



## H. V. A. C. B A S E M E N T P L A N

SCALE: 6" = 1'-0"

### PLAN NOTES:

- ALL DUCTWORK SHALL BE ROUTED AS PER FIELD CONDITIONS PRESENT. CONTRACTOR TO COORDINATE MECHANICAL WORK WITH ALL TRADES (INCLUDING ELECTRICAL, PLUMBING, SPRINKLER, ETC.) AND INDICATE SIZES AND HEIGHTS ON SHEET METAL DRAWING. REPORT ANY DISCREPANCIES TO THE ENGINEER.
- CONTRACTOR SHALL INSTALL ALL NEW DUCTWORK AS HIGH AS POSSIBLE TO THE STRUCTURE ABOVE. ALL NEW DUCTWORK SHALL BE PROPERLY SECURED AS PER MECHANICAL SPECIFICATIONS.
- CONTRACTOR TO REFER TO MANUFACTURER'S RECOMMENDATIONS FOR PROPER EQUIPMENT CLEARANCES AND ACCESSORIES. INDICATE EQUIPMENT CLEARANCES ON SHEET METAL SHOP DRAWINGS.
- CONTRACTOR TO PROVIDE ACOUSTIC DUCT LINING ON SUPPLY AND RETURN DUCTWORK UP TO 20 FEET FROM EACH AC UNIT.
- SHEET METAL DUCTWORK DIMENSIONS SHOWN ARE CLEAR INSIDE DIMENSIONS.
- SEE MECHANICAL SPECIFICATIONS FOR EXTERNAL INSULATION REQUIREMENTS ON SUPPLY AND RETURN DUCTWORK.
- PROVIDE DUCT-MOUNTED MANUAL VOLUME DAMPERS FOR ALL BRANCH DUCTS AND CONNECTIONS TO SUPPLY AIR OUTLETS. PROVIDE VOLUME DAMPERS FOR ALL DUCTED RETURN AND EXHAUST AIR INTAKES.
- COORDINATE LOCATIONS AND DETAILS OF VISIBLE DEVICES AND AIR OUTLETS WITH THE ARCHITECT PRIOR TO INSTALLATION.
- THERMOSTAT LOCATIONS SHALL BE COORDINATED WITH CLIENT, ARCHITECT AND ENGINEER PRIOR TO INSTALLATION.
- COORDINATE ALL HVAC EQUIPMENT WITH OTHER TRADES (I.E. PLUMBING, SPRINKLER, ELECTRICAL, POWER AND LIGHTING, ARCHITECTURAL, ETC.) PROVIDE COORDINATED SHOP DRAWINGS INDICATING ALL OF THE MANUFACTURER'S RECOMMENDED CLEARANCES UNOBSTRUCTED FOR REVIEW PRIOR TO INSTALLATION.
- PROVIDE GRAPHIC OPERATING INSTRUCTIONS FOR ALL THERMOSTATS COORDINATE WITH MANUFACTURER FOR THERMOSTAT TYPE.

### REFERENCE NOTES:

- PROVIDE FLOOR MOUNTED UNIT WITH DUCT MOUNTED HOT WATER COILS, AUXILIARY STAINLESS STEEL DRIP PAN AND LEAK DETECTION SYSTEM.
- EXISTING BOILER TO BE REPLACED WITH BOILER OF SIMILAR CAPACITY. SEE M-600 FOR MORE INFORMATION.
- PROVIDE 1" DOOR UNDERCUT. COORDINATE WITH ARCHITECT.
- COORDINATE ALL DUCT WORK PENETRATIONS TO FLOOR ABOVE WITH STRUCTURAL ENGINEER.
- CONNECT NEW BOILER FLUE TO FLUE IN BASEMENT. CONTRACTOR SHALL MAINTAIN ALL CLEARANCES. VERIFY IN FIELD ALL CONNECTIONS AND SIZES.

Issue	Date	Issue	Date
A. ISSUE FOR LL REVIEW & HISTORIC REVIEW	07/10/2015		
B. ISSUE FOR DEMO PERMIT	07/20/2015		
C. ISSUE FOR PERMIT	07/24/2015		

Project:  
FAT FACE PORTLAND  
34 EXCHANGE STREET  
PORTLAND, ME 04104

Drawing Title  
H.V.A.C. BASEMENT PLAN

Project No.	Drawn By	Date	Scale
15.102.00	MS	---	---

Seal	Floor(s)	Drawing No.
MS		M-300

