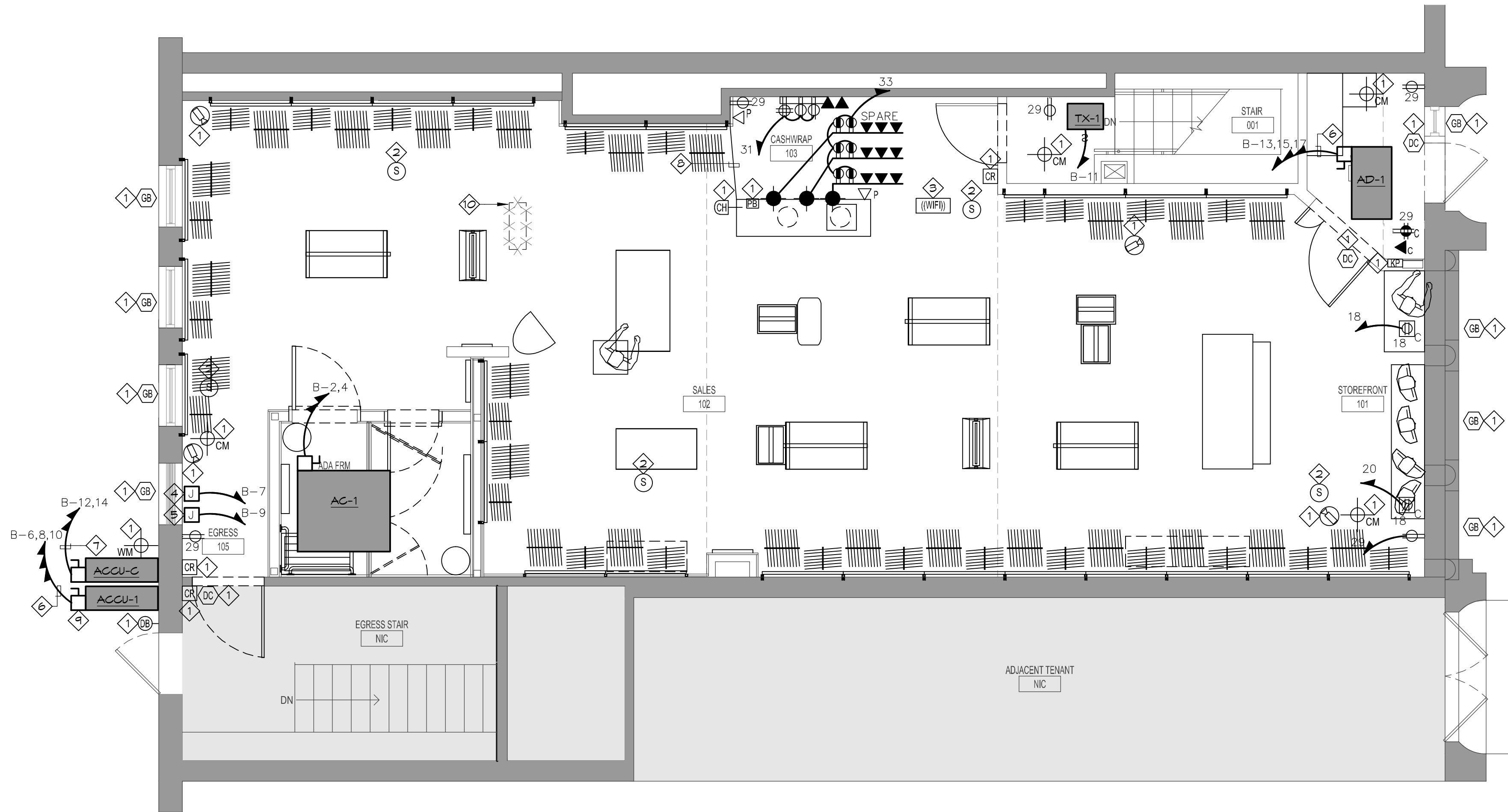


CLIENT/OWNER/TENANT
FAT FACE LTD
1-3 RIDGWAY HAVANT, PO9 1QJ
UNITED KINGDOM
CONTACT: DAVID LILLEY
TEL: 0044.2392.441100
E: DAVID.LILLEY@FATFACE.COM

DESIGNER
BOX OF FROGS LTD
2 WILLOW PARK STROKE POGES BUCKS SL2 4ES
CONTACT: SARAH MALCOM-RICHARDS
TEL: 007748608997
E: SARAH@BOXOFFROGS.WEB.COM

MEP ENGINEER
FISKAA
589 8TH AVENUE
NEW YORK, NY, 10018
CONTACT: ERIC MARTINSEN
TEL: 212.738.9500
E: EMARTINSEN@FISKAA.COM



ELECTRICAL GROUND FLOOR POWER PLAN

SCALE: 6" = 1'-0"

PLAN NOTES:

- FOR GENERAL NOTES, ABBREVIATIONS AND SYMBOL LIST, SEE DWGS. E-100 & E-101.
- FOR POWER RISER DIAGRAM AND PANEL SCHEDULES, SEE DWG. E-500 & E-600.
- CIRCUIT NUMBERS ARE FOR GROUPING PURPOSES AND FOR REFERENCE ONLY, INDICATING NEW CIRCUITING TO PANEL 'A' UON. CIRCUIT DESIGNATION 'H-' REFERS TO PANEL 'H'.
- 3/4" SHALL BE THE MINIMUM SIZE CONDUIT INSTALLED. #12 THHN SHALL BE THE MINIMUM WIRE SIZE AND SHALL BE USED FOR ALL BRANCH WIRING. UON.
- ENTIRE INSTALLATION SHALL MEET REQUIREMENTS OF NATIONAL AND LOCAL ELECTRICAL CODES. ALL EQUIPMENT SHALL BEAR UL LABELS.
- PROVIDE RACEWAY, WIRE AND CABLE, ASSOCIATED FITTINGS AND CONNECTORS, AND COMPLETE CONNECTIONS REQUIRED FOR DESIGNATED BRANCH CIRCUITS FROM DEVICE(S) TO FINAL OVERCURRENT PROTECTION DEVICE AND TO LOCAL CONTROL DEVICE(S) PER SPECIFICATIONS.
- CONTRACTOR SHALL PROVIDE GREEN GROUND WIRE IN ALL BRANCH CIRCUITS SIZED PER NEC.
- MAINTAIN MAXIMUM BRANCH CIRCUIT CONDUCTOR LENGTHS AS PER SPECIFICATIONS. INCLUDE GROUND CONDUCTOR DERATINGS.
- ALL WIRING TO BE IN CONDUIT. ALL CONDUIT SHALL BE CONCEALED WHERE POSSIBLE. EXPOSED CONDUIT SHALL BE IN STRAIGHT LINES PARALLEL WITH OR AT RIGHT ANGLES TO COLUMN LINES OR BEAMS.
- FLEXIBLE CONDUIT IS TO BE USED FOR SHORT FINAL CONNECTIONS ONLY. NO FLEXIBLE CONDUIT PERMITTED IN DEMISING WALLS.
- REFER TO ARCHITECTURAL DRAWINGS FOR EXACT LOCATION AND MOUNTING HEIGHTS OF ALL RECEPTACLES, EQUIPMENT AND WIRING DEVICES.
- PROVIDE RACEWAY, WIRE AND CABLE, ASSOCIATED FITTINGS AND CONNECTORS, AND COMPLETE CONNECTIONS REQUIRED FOR DESIGNATED BRANCH CIRCUITS FROM DEVICE(S) TO FINAL OVERCURRENT DEVICE AND TO LOCAL CONTROL DEVICE(S) PER SPECIFICATIONS.
- IN EACH INSTANCE WHERE TWO OR MORE DEVICE BOXES ARE GENERALLY LOCATED IN THE SAME VICINITY AND AT DIFFERENT ELEVATIONS, MOUNT THE BOXES VERTICALLY ON A COMMON CENTER LINE.
- ALL CIRCUITS TO COMPUTERS AND ANY OTHER LOADS OF NON-LINEAR NATURE SHALL HAVE A SEPARATE GROUND AND SEPARATE NEUTRAL WIRES. SHARED NEUTRAL HOMERUNS ARE NOT PERMITTED. DERATE ALL CONDUCTORS AS REQUIRED BY NEC.
- FOR ALL CORD-AND-PLUG EQUIPMENT, COORDINATE REQUIREMENTS WITH EQUIPMENT MANUFACTURER. EQUIPMENT AND ASSOCIATED RECEPTACLE SHALL NOT BE CONCEALED ABOVE CEILING PER NEC.
- ALL DUPLEX RECEPTACLES WITHIN 6'-0" OF A SINK'S EDGE SHALL BE GFCI TYPE.
- CONTRACTOR SHALL COORDINATE THE COLOR OF ALL DEDICATED ELECTRICAL OUTLETS WITH THE ARCHITECT.

REFERENCE NOTES:

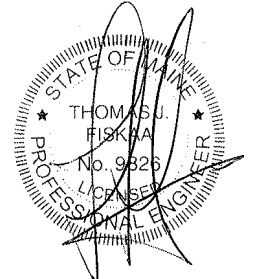
- PROVIDE BACKBOX AND CONDUIT WITH PULLSTRING FOR SECURITY EQUIPMENT. COORDINATE INSTALLATION WITH SECURITY VENDOR. COORDINATE EXACT LOCATION WITH ARCHITECT.
- PROVIDE BACKBOX AND CONDUIT WITH PULLSTRING FOR A/V EQUIPMENT. COORDINATE INSTALLATION WITH A/V VENDOR. COORDINATE EXACT LOCATION WITH ARCHITECT.
- PROVIDE BACKBOX AND CONDUIT WITH PULLSTRING FOR CEILING MOUNTED WIRELESS ACCESS POINT. COORDINATE INSTALLATION WITH IT CONSULTANT. COORDINATE LOCATION WITH ARCHITECT.
- PROVIDE POWER AND JUNCTION BOX FOR FIRE SMOKE DAMPER.
- PROVIDE POWER AND JUNCTION BOX FOR MOTORIZED DAMPER.
- PROVIDE (3)#8 THHN CU + (1)#10 THHN CU GND IN A 3/4" C.
- PROVIDE (2)#8 THHN CU + (1)#10 THHN CU GND IN A 3/4" C.
- PROVIDE (1) 3/4" RGS CONDUIT FOR POWER AND (1) 1" RGS CONDUIT WITH PULL STRING FOR TEL-DATA CABLING. RUN CONDUITS WITHIN TRENCHED FLOOR AS SHOWN. COORDINATE FLOOR TRENCHING WITH BUILDING MANAGEMENT.
- ENCLOSURE AND ALL CONNECTIONS SHALL BE OUTDOOR RATED. CONDUIT SHALL BE RGS AND FIXED TO ROOF SURFACE.
- EXISTING SUB-PANEL AND FEEDER TO BE REMOVED BACK TO MAIN PANEL.

Issue	Date	Issue	Date
A. ISSUE FOR LL REVIEW & HISTORIC REVIEW	07/10/2015		
B. ISSUE FOR DEMO PERMIT	07/20/2015		
C. ISSUE FOR PERMIT	07/24/2015		

Project:
FAT FACE PORTLAND
34 EXCHANGE STREET
PORTLAND, ME 04104

Drawing Title
**ELECTRICAL GROUND FLOOR
POWER PLAN**

Project No.	Drawn By	Date	Scale
15.102.00		---	---
Seal	XX	Floor(s)	



Drawing No.
E-301