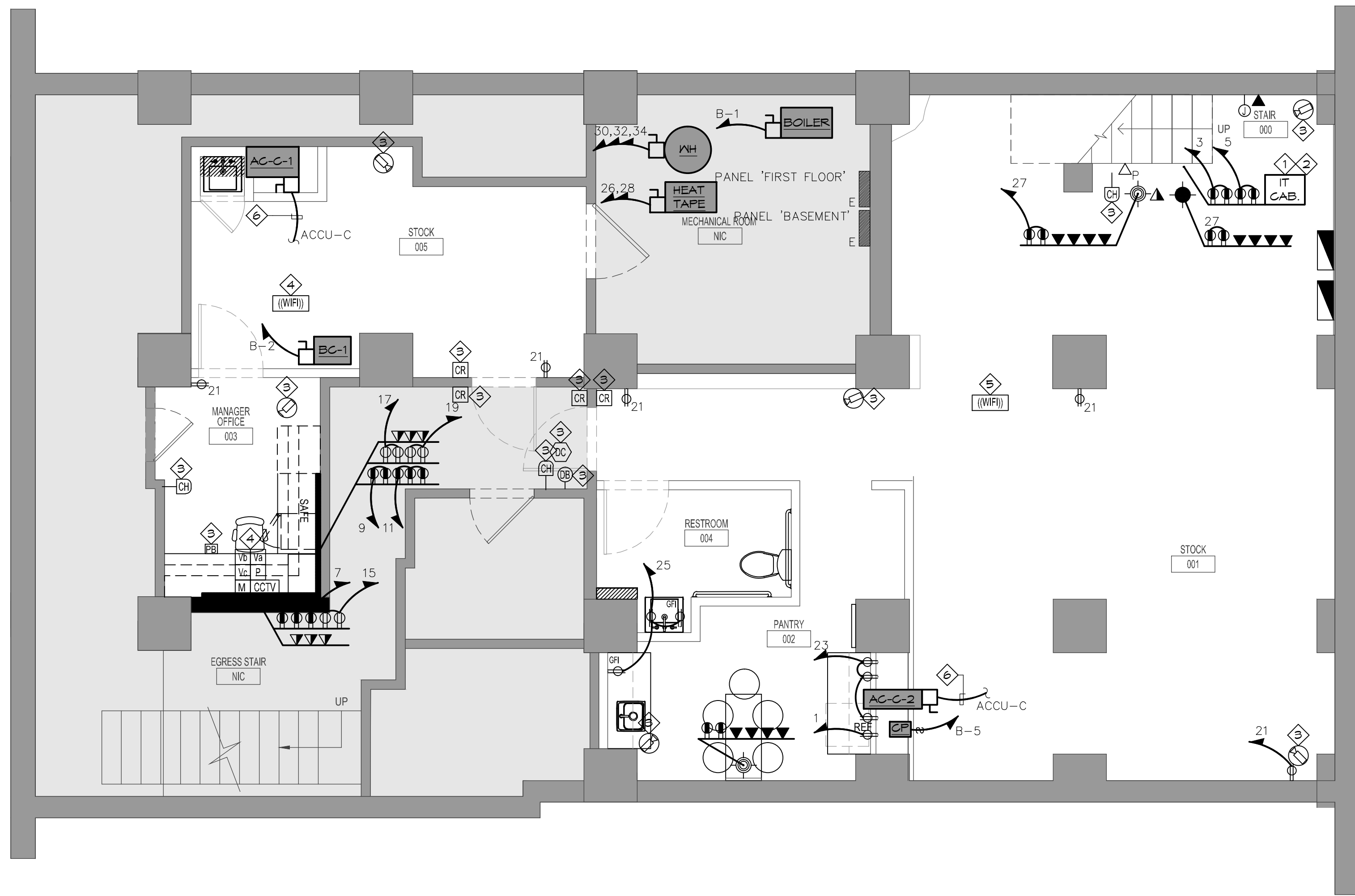


CLIENT/OWNER/TENANT  
FAT FACE LTD  
1-3 RIDGWAY HAVANT, PO9 1QJ  
UNITED KINGDOM  
CONTACT: DAVID LILLEY  
TEL: 0044.2392.441100  
E: DAVID.LILLEY@FATFACE.COM

DESIGNER  
BOX OF FROGS LTD  
2 WILLOW PARK STROKE POGES BUCKS SL2 4ES  
CONTACT: SARAH MALCOM-RICHARDS  
TEL: 007748606997  
E: SARAH@BOXOFFROGS.WEB.COM

MEP ENGINEER  
FISKAA  
589 8TH AVENUE  
NEW YORK, NY, 10018  
CONTACT: ERIC MARTINSEN  
TEL: 212.736.9500  
E: EMARTINSEN@FISKAA.COM



# ELECTRICAL BASEMENT POWER PLAN

SCALE: 6" = 1'-0"

## PLAN NOTES:

- FOR GENERAL NOTES, ABBREVIATIONS AND SYMBOL LIST, SEE DWGS. E-100 & E-101.
- FOR POWER RISER DIAGRAM AND PANEL SCHEDULES, SEE DWG. E-500 & E-600.
- CIRCUIT NUMBERS ARE FOR GROUPING PURPOSES AND FOR REFERENCE ONLY, INDICATING NEW CIRCUITING TO PANEL 'FIRST FLOOR', UN. CIRCUIT DESIGNATION 'B-' REFERS TO PANEL 'BASEMENT'.
- 3/4" SHALL BE THE MINIMUM SIZE CONDUIT INSTALLED. #12 THHN SHALL BE THE MINIMUM WIRE SIZE AND SHALL BE USED FOR ALL BRANCH WIRING, UN.
- ENTIRE INSTALLATION SHALL MEET REQUIREMENTS OF NATIONAL AND LOCAL ELECTRICAL CODES. ALL EQUIPMENT SHALL BEAR UL LABELS.
- PROVIDE RACEWAY, WIRE AND CABLE, ASSOCIATED FITTINGS AND CONNECTORS, AND COMPLETE CONNECTIONS REQUIRED FOR DESIGNATED BRANCH CIRCUITS FROM DEVICE(S) TO FINAL OVERCURRENT PROTECTION DEVICE AND TO LOCAL CONTROL DEVICE(S) PER SPECIFICATIONS.
- CONTRACTOR SHALL PROVIDE GREEN GROUND WIRE IN ALL BRANCH CIRCUITS SIZED PER NEC.
- MAINTAIN MAXIMUM BRANCH CIRCUIT CONDUCTOR LENGTHS AS PER SPECIFICATIONS. INCLUDE GROUND CONDUCTOR DERATINGS.
- ALL WIRING TO BE IN CONDUIT. ALL CONDUIT SHALL BE CONCEALED WHERE POSSIBLE. EXPOSED CONDUIT SHALL BE IN STRAIGHT LINES PARALLEL WITH OR AT RIGHT ANGLES TO COLUMN LINES OR BEAMS.
- FLEXIBLE CONDUIT IS TO BE USED FOR SHORT FINAL CONNECTIONS ONLY. NO FLEXIBLE CONDUIT PERMITTED IN DEMISING WALLS.
- REFER TO ARCHITECTURAL DRAWINGS FOR EXACT LOCATION AND MOUNTING HEIGHTS OF ALL RECEPTACLES, EQUIPMENT AND WIRING DEVICES.
- PROVIDE RACEWAY, WIRE AND CABLE, ASSOCIATED FITTINGS AND CONNECTORS, AND COMPLETE CONNECTIONS REQUIRED FOR DESIGNATED BRANCH CIRCUITS FROM DEVICE(S) TO FINAL OVERCURRENT DEVICE AND TO LOCAL CONTROL DEVICE(S) PER SPECIFICATIONS.
- IN EACH INSTANCE WHERE TWO OR MORE DEVICE BOXES ARE GENERALLY LOCATED IN THE SAME VICINITY AND AT DIFFERENT ELEVATIONS, MOUNT THE BOXES VERTICALLY ON A COMMON CENTER LINE.
- ALL CIRCUITS TO COMPUTERS AND ANY OTHER LOADS OF NON-LINEAR NATURE SHALL HAVE A SEPARATE GROUND AND SEPARATE NEUTRAL WIRES. SHARED NEUTRAL HOMERUNS ARE NOT PERMITTED. DERATE ALL CONDUCTORS AS REQUIRED BY NEC.
- FOR ALL GROUND-FLOW EQUIPMENT, COORDINATE REQUIREMENTS WITH EQUIPMENT MANUFACTURER. EQUIPMENT AND ASSOCIATED RECEPTACLE SHALL NOT BE CONCEALED ABOVE CEILING PER NEC.
- ALL DUPLEX RECEPTACLES WITHIN 6'-0" OF A SINK'S EDGE SHALL BE GFCI TYPE.
- CONTRACTOR SHALL COORDINATE THE COLOR OF ALL DEDICATED ELECTRICAL OUTLETS WITH THE ARCHITECT.

## REFERENCE NOTES:

- PROVIDE 30.5" (12U) HIGH X 24" WIDE X 26.3" DEEP WALL MOUNTED EQUIPMENT CABINET. ALL ALUMINUM CONSTRUCTION WITH EIA 310C COMPLIANT MOUNTING HOLES, BLACK FINISH, DOUBLE SIDED. CABINET SHALL BE CONSTRUCTED TO SWING OPEN FOR COMPONENT CABLING ACCESS. CENTER SECTION SHALL PIVOT FOR EITHER LEFT OR RIGHT OPENING. CABINET SHALL BE LOCKABLE AND FURNISHED WITH A PLEXI-GLASS DOOR AND EXHAUST FANS. MANUFACTURER: MIDDLE ATLANTIC PRODUCTS. PART NO.: DNR-18-26 (24" USEABLE DEPTH WALL MOUNT CABINET). PFD-XX (PLEXI-GLASS DOOR). DNR-FK26 (FAN KIT).
- PROVIDE 24 PORT CATEGORY 6, 8 PIN MODULAR PATCH PANEL. QUANTITY AS REQUIRED, FOR HORIZONTAL CABLE TERMINATIONS (RACK MOUNTED)
- PROVIDE BACKBOX AND CONDUIT WITH FULLSTRING FOR SECURITY EQUIPMENT. COORDINATE INSTALLATION WITH SECURITY VENDOR. COORDINATE EXACT LOCATION WITH ARCHITECT.
- PROVIDE BACKBOX AND CONDUIT WITH FULLSTRING FOR A/V EQUIPMENT. COORDINATE INSTALLATION WITH AV VENDOR. COORDINATE EXACT LOCATION WITH ARCHITECT.
- PROVIDE BACKBOX AND CONDUIT WITH FULLSTRING FOR CEILING MOUNTED WIRELESS ACCESS POINT. COORDINATE INSTALLATION WITH IT CONSULTANT. COORDINATE LOCATION WITH ARCHITECT.
- PROVIDE (2)#8 THHN CU + (1)#10 THHN CU GND IN A 3/4" C. POWER FOR EVAPORATOR UNIT FROM CONDENSER UNIT.

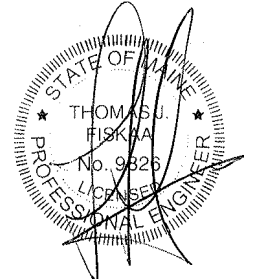
Issue	Date	Issue	Date
A. ISSUE FOR LL REVIEW &	07/10/2015		
B. HISTORIC REVIEW			
C. ISSUE FOR DEMO PERMIT	07/20/2015		
D. ISSUE FOR PERMIT	07/24/2015		

Project:  
FAT FACE PORTLAND  
34 EXCHANGE STREET  
PORTLAND, ME 04104

Drawing Title  
ELECTRICAL BASEMENT  
POWER PLAN

Project No.	Drawn By	Date	Scale
15.102.00		---	

Seal XX Floor(s)



Drawing No.  
**E-300**