

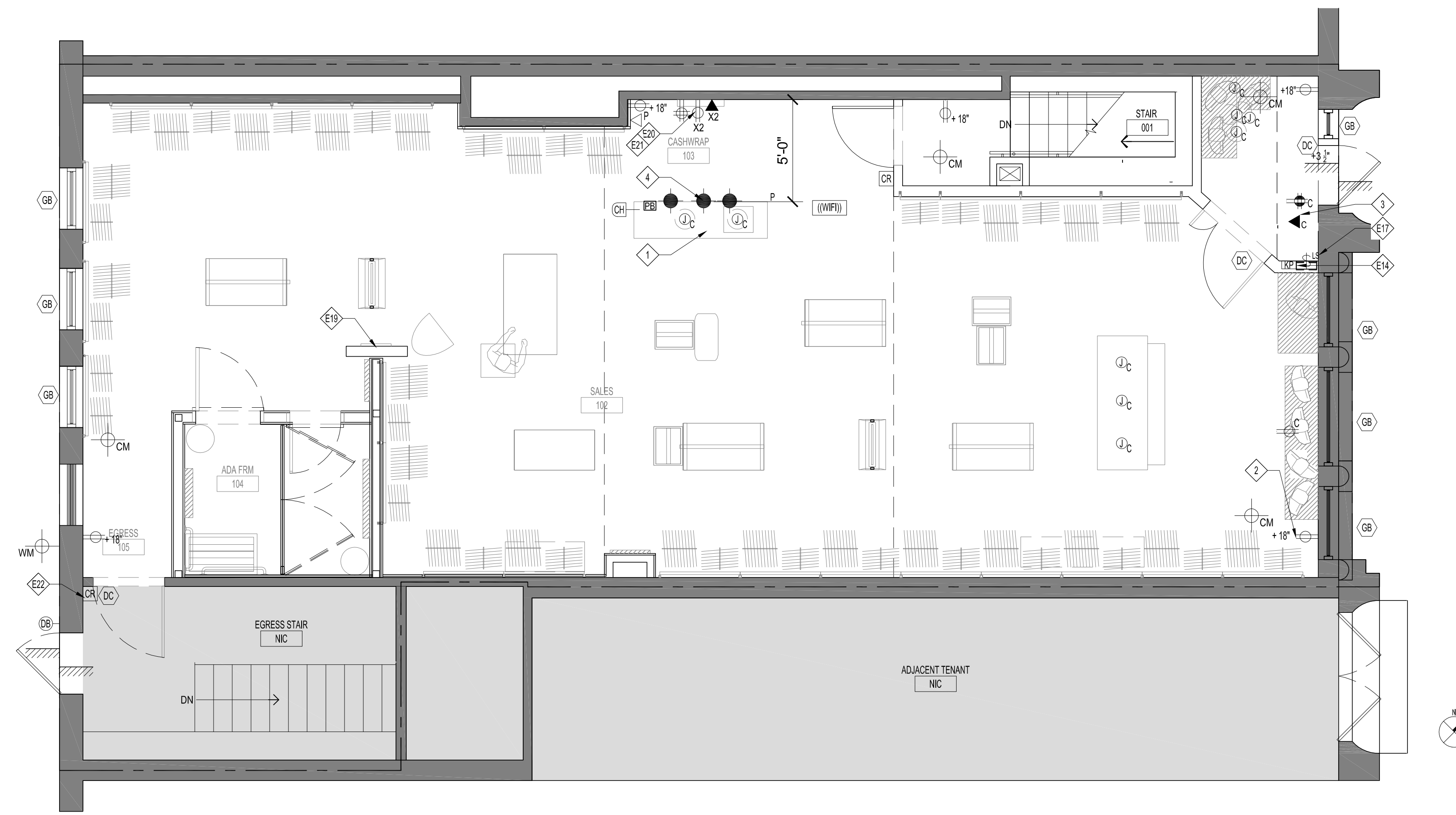
DESIGN REPUBLIC PARTNERS ARCHITECTS LLP  
501 MADISON AVENUE 11th FLOOR NEW YORK, NEW YORK 10022  
TELEPHONE 646 747 3730 WWW.DESIGNREPUBLIC.US.COM  
ARCHITECTURE PLANNING DESIGN

CLIENT/OWNER/TENANT  
FAT FACE LTD  
1-3 RIDGWAY HAVANT, PO9 1QJ  
UNITED KINGDOM  
CONTACT: DAVID LILLEY  
TEL: 0044 2392 441100  
E: DAVID.LILLEY@FATFACE.COM

DESIGNER  
BOX OF FROGS LTD  
2 WILLOW PARK STOKE POGES BUCKS SL2 4ES  
CONTACT: SARAH MALCOM-RICHARDS  
TEL: 00748609897  
E: SARAH@BOXOFFROGS.WEB.COM

MEP ENGINEER  
FSKAA  
589 8TH AVENUE  
NEW YORK, NY, 10018  
CONTACT: ERIC MARTINSEN  
TEL: 212.736.9600  
E: EMARTINSEN@FSKAA.COM

STRUCTURAL ENGINEER  
ARMOUR UNSDERFER ENGINEERING INC. P.S.  
555 116TH AVE NE, SUITE 118  
BELLEVUE WA 98004  
CONTACT: BRIAN UNSDERFER  
TEL: 425.614.0949  
E: brianu@au-eng.com



**POWER/DATA GROUPING**

- P.O.S. POWER/DATA GROUPING** - PROVIDE (4) CAT 6 RECEPTACLES & (1) QUAD SURGE PROTECTED POWER RECEPTACLES - REFER TO ELECTRICAL DRAWINGS FOR ADDITIONAL INFORMATION
- MANAGER OFFICE POWER/DATA GROUPING** - PROVIDE (4) CAT 6 CABLES AND (1) QUAD SURGE PROTECTED RECEPTACLE AT 84" FOR P.C. - REFER TO MANAGER'S DESK DIAGRAM BELOW - REFER TO ELECTRICAL DRAWINGS FOR ADDITIONAL INFORMATION
- STOCK AREA POWER/DATA GROUPING** - PROVIDE (4) CAT 6 CABLES AND (1) QUAD SURGE PROTECTED RECEPTACLE
- CAT-6 REQUIREMENTS:**  
BREAKROOM : 2 DROPS / WALL PHONE  
STOCK ROOM : 4 DROPS: (1) PHONE, (1) COMPUTER, (1) OPEN FOR FUTURE USE 18" AFF
- REFER TO & COORDINATE WITH FAT FACE STORE PLANNING IT TECHNICAL SPECIFICATIONS  
REFER TO & COORDINATE WITH FAT FACE AV VENDOR SPECIFICATIONS
- WIRELESS ACCESS POINT** - PROVIDE (1) CAT6 CABLE  
RECESSED CLOCK OUTLETS ON DEDICATED CIRCUITS AS REQUIRED FOR VIDEO MONITORS, REFER TO SPECIFICATIONS RE: POWER REQUIREMENTS
- MILWORK TO BE BY GC

**SECURITY LEGEND**

- DC** DOOR CONTACT - 1/2" INCH RECESSED DOOR FRAME
- CM** MOTION DETECTOR (CEILING MOUNTED)
- WM** MOTION DETECTOR ( WALL MOUNTED)
- GB** GLASS BREAKS - 1 INCH RECESSED MOUNT
- KP** KEYPAD - (LOCATION T.B.D) COORD WITH FATFACE AND FATFACE SECURITY VENDOR
- CR** CARD READER
- SP** SECURITY PANELS - NEAR TELEPHONE PANEL
- PB** PANIC BUTTON
- VS** VIDEO SYSTEM
- HE** VIDEO HEAD END - MANAGER OFFICE
- P** POWER SUPPLY - CAMERA POWER SUPPLY
- YB** DVR 16 CHAN. - MANAGERS OFFICE 160GIG
- VA** 14" FLAT MONITOR - MANAGERS OFFICE/STAGING AREA
- VC** MODEM - MANAGERS OFFICE
- CCV** VIDEO CAMERA (DOME) SEE RCP FOR LOCATIONS
- M** CCTV MONITOR
- M** MUSIC PLAYER/SYSTEM
- M** WIRE MOLD 400A-CROSS DESK AND VERTICAL

**EQUIPMENT SCHEDULE**

- E01** MICROWAVE (OR EQUAL)  
COLOR/FINISH: BLACK  
MANUFACTURER: GE  
MODEL #: JES0736SP  
DIMENSIONS: 10 1/4" X 13 1/4" X 18 1/4"
- E02** UNDEFCOUNTER FRIDGE; (OR EQUAL)  
COLOR/FINISH: BLACK  
MANUFACTURER: GE  
MODEL #: WMR04GADBB  
DIMENSIONS: 32 1/2" X 22 1/2" X 20 7/8"
- E03** PIPP STOCK SHELVING, PROVIDED & INSTALLED BY VENDOR
- E04** BLACK BOX BY FAT FACE VENDOR, IT CABINET LOCATED UNDER RECEIVING DESK
- E05** ELECTRICAL PANELS
- E06** SAFE BY FAT FACE
- E07** COUNTERTOP WATER COOLER; (OR EQUAL)  
COLOR/FINISH: STAINLESS STEEL  
MANUFACTURER: OASIS  
MODEL #: POU1C0THS  
DIMENSIONS: 14"D X 12 1/2" W X 17 1/4" H
- E08** MOP SINK  
DESCRIPTION: FREESTANDING MOP SINK  
MFR: MUSTEE  
MODEL: 21F LIL TUB  
COLOR: WHITE  
18"W X 24"D X 34" HIGH  
GC TO PROVIDE COMPATIBLE FAUCET ADA COMPLIANT 8" CENTERS FIAT MODEL #830-AA OR APPROVED EQUIVALENT
- E09** FLOOR MOUNTED TOILET - ADA COMPLIANT  
MANUF.: KOHLER  
MODEL: K3609 WITH K4660  
SIZE: -  
COLOR: WHITE  
SEAT: -  
INSTALL FLUSH LEAVER ON SIDE FURTHEST AWAY FROM ADJACENT WALL
- E10** ADA PANTRY SINK  
DESCRIPTION: SINGLE BOWL ADA TOP MTD SINK  
MANUFACTURER: ELKAY  
MODEL#: LRADO 1716650  
SIZE: 17"X16"X5.6"
- E11** PANTRY FAUCET  
DESCRIPTION: HIGH SPOUT FAUCET  
MANUFACTURER: KOHLER  
MODEL#: K15275
- E12** LAVATORY FAUCET-ADA COMPLIANT  
MANUF.: AMERICAN STANDARD  
MODEL: 7501.175  
MONTERREY TWO HANDLE CENTERSET WITH GOOSENECK SPOUT
- E13** WALL HUNG LAVATORY - ADA COMPLIANT  
MANUF.: AMERICAN STANDARD  
MODEL: COMRADE  
SIZE: 20"W X 18"D  
COLOR: VITREOUS CHINA WHITE  
PROVIDE TRAP COVER
- E14** SECURITY ALARM KEYPAD  
COORDINATE WITH FAT FACE SECURITY VENDOR
- E15** SECURITY CONTROL PANEL  
COORDINATE WITH FAT FACE SECURITY VENDOR
- E16** PIPP EMPLOYEE LOCKERS  
COORDINATE WITH VENDOR
- E17** LIGHTING CONTROLS
- E18** TOASTER
- E19** IPAD AND IPAD DOCK STATION BY OWNER
- E20** TV MONITOR BY OWNER
- E21** DVR BY OWNER
- E22** DOOR KEY PAD ENTRY (SEE DOOR HARDWARE SCHEDULE)
- E23** JBOX FOR FUTURE FINGER PRINT READER

**POWER/DATA LEGEND**

- AL** INDICATES NEW WALL MOUNTED ALARM DEVICE. SEE SECURITY AND ENGINEERING DRAWINGS FOR SPECIFICATIONS AND NOTES
- J** INDICATES NEW RECESSED FLUSH FLOOR MOUNTED ELECTRICAL POWER JUNCTION BOX
- D** INDICATES NEW RECESSED FLUSH FLOOR MOUNTED DUPLEX ELECTRICAL RECEPTACLE
- Q** INDICATES NEW RECESSED FLUSH FLOOR MOUNTED QUAD ELECTRICAL RECEPTACLE
- J** INDICATES NEW FLUSH WALL MOUNTED ELECTRICAL POWER JUNCTION BOX
- Q** INDICATES NEW FLUSH WALL MOUNTED ELECTRICAL POWER JUNCTION BOX
- DB** INDICATES NEW WALL MOUNTED DOOR BELL WITH 3/4" CONDUIT TO 6" ABOVE FINISHED CEILING, MOUNTED AT 3-2" A.F.F. (REFER TO SECURITY AND/OR ENGINEERING DRAWINGS FOR CIRCUITING AND ADDITIONAL INFORMATION, NOTE DOOR BELL HOOKED UP TO CEILING MOUNTED CHIME)
- CH** INDICATES NEW WALL MOUNTED DOOR CHIME. HOOKED UP TO DOOR BELL (REFER TO SECURITY AND/OR ENGINEERING DRAWINGS FOR CIRCUITING AND ADDITIONAL INFORMATION)
- HS** FIRE ALARM HORN/STROBE MOUNTED 80" AFF.
- SB** FIRE ALARM STROBE MOUNTED 80" AFF.
- ST** SHOPPER TRACK
- MOD** MODEM
- LS** LIGHT SWITCH: OFF-ON ALL LIGHT FIXTURES IN SALES, DISPLAY & SIGNAGE AREAS.
- W** WIRELESS ACCESS POINT
- TL** CEILING MOUNTED TWISTLOCK OUTLET
- FL** FLOOR MOUNTED TWISTLOCK OUTLET
- WL** WALL MOUNTED TWISTLOCK OUTLET

**ELECTRICAL POWER NOTES**

- INDICATES NEW FLUSH WALL MOUNTED DUPLEX ELECTRICAL OUTLET / RECEPTACLE, MOUNTED AT 18" A.F.F. TO CENTER LINE, U.O.N.
- INDICATES NEW WALL MOUNTED QUADRUPLX (DOUBLE DUPLEX) ELECTRICAL OUTLET/RECEPTACLE, MOUNTED AT 18" A.F.F. TO CENTER LINE, U.O.N.
- INDICATES NEW WALL MOUNTED SINGLE GANG COMBINATION VOICEDATA OUTLET/ RECEPTACLE MOUNTED AT 18" A.F.F. TO CENTER LINE, U.O.N. WITH 1/2" CONDUIT WITHIN PARTITION TO 6" ABOVE FINISHED CEILING WITH DRAG LINE, CABLING BY OTHERS
- INDICATES NEW WALL MOUNTED SINGLE GANG DATA ONLY OUTLET/RECEPTACLE MOUNTED AT 18" A.F.F. TO CENTER LINE, U.O.N. WITH 1/2" CONDUIT WITHIN PARTITION TO 6" ABOVE FINISHED CEILING WITH DRAG LINE, CABLING BY OTHERS
- INDICATES NEW WALL MOUNTED SINGLE GANG VOICE ONLY OUTLET/RECEPTACLE MOUNTED AT 18" A.F.F. TO CENTER LINE, U.O.N. WITH 1/2" CONDUIT WITHIN PARTITION TO 6" ABOVE FINISHED CEILING WITH DRAG LINE, CABLING BY OTHERS
- INDICATES NEW WALL MOUNTED GROUND FAULT INTERRUPT (GFI) ELECTRICAL OUTLET/ RECEPTACLE MOUNTED AT 18" A.F.F. TO CENTER LINE U.O.L. (AT ALL WET LOCATIONS, PROVIDE THIS TYPE OUTLET)
- INDICATES NEW FLUSH WALL MOUNTED DEDICATED CIRCUIT DUPLEX ELECTRICAL OUTLET/RECEPTACLE, MOUNTED AT 18" A.F.F. TO CENTER LINE, U.O.N. (REFER TO ENGINEERING DRAWINGS FOR CIRCUITING)
- INDICATES NEW FLUSH WALL MOUNTED DEDICATED CIRCUIT QUADRUPLX (DOUBLE DUPLEX) ELECTRICAL OUTLET RECEPTACLE, MOUNTED AT 18" A.F.F. TO CENTER LINE, U.O.N. (REFER TO ENGINEERING DRAWINGS FOR CIRCUITING)
- NEW FLUSH CEILING MOUNTED 20 AMP DUPLEX RECEPTACLE
- INDICATES FLUSH CEILING MOUNTED OUTLET/ RECEPTACLE
- INDICATES ALARM KEY PAD
- INDICATES GLASS BREAK

**CONSTRUCTION KEY NOTES**

- P.O.S. POWER/DATA GROUPING, REFER TO GRAPHIC LEGEND FOR DESCRIPTION. POWER SUPPLY SHOULD BE CENTER RECESS AT BASE CABINET. CONDUITS WITHIN CASH WRAP SHOULD BE FLEX. GC TO PROVIDE SURGE PROTECTOR POWER STRIP 2X6 PORT RACK WITH 6" CHORD TO BE LOCATED AT DRAWER. COORDINATE WITH FAT FACE MILLWORKER.
- WALL MOUNTED DISPLAY WINDOW OUTLET TO BE ON TIME/CLOCK. FINISH TO MATCH ADJ. SURFACE
- GC TO CORE DRILL FOR CASHWRAP POWER.
- ELECTRIFIED LOCKSET TIED INTO BUILDING CLASS "E" SYSTEM. REFER TO HARDWARE SCHEDULE
- CEILING MOUNTED OUTLET FOR AIR CURTAIN

**CONSTRUCTION KEY NOTES**

- REFER TO DRAWING G-001.00 & G-002 FOR ADDITIONAL GENERAL NOTES AND SPECIFICATIONS.
- REFER TO ENGINEERS DRAWING FOR ADDITIONAL NOTES AND SPECIFICATIONS RELATED TO ENGINEERING SERVICES.
- GC TO COORDINATE ELECTRICAL SUBCONTRACTORS DISCONNECTS, CONNECTS AND INSURE NO DISRUPTIONS OCCUR TO THE BUILDING SERVICES. GC TO COORDINATE WITH LL AS REQUIRED.
- ELECTRICAL SUBCONTRACTOR TO PROVIDE ALL NECESSARY ELECTRICAL RUNS IN ORDER TO CONFORM WITH REQUIREMENTS. REFER TO MEP DWGS IN CONJUNCTION WITH ARCH DRAWINGS.
- ALL ELECTRICAL DEVICES (SWITCHES, WALL, FLOOR, AND CEILING OUTLETS, COVER PLATES, ETC.) ARE TO BE INSTALLED IN A COMPARTMENT MANHER MAINTAINING LEVEL ALIGNMENTS.
- ALL ELECTRICAL AND TELEPHONE WALL OUTLETS IDENTIFIED AS 24" OR MORE A.F.F. SHALL BE INSTALLED HORIZONTALLY. SWITCHES AND PLATES TO MATCH WALL FINISH.
- ALL PAIRED OUTLET DEVICES SHALL MEASURE NO MORE THAN 6" CENTERLINE OF EACH DEVICE.
- GC TO INSURE ALL NEW TELEPHONE/DATA AND ELECTRICAL OUTLETS TO BE INSTALLED ON EXISTING WALLS ARE FLUSH MOUNTED WITH FINISHED WALL SURFACE.
- ALL EXISTING ELECTRICAL OUTLETS ARE TO BE CAPPED AND SHALL HAVE DEVICES AND ASSOCIATED WIRING REMOVED BACK TO SOURCE PATCH AS REQUIRED.
- ALL UNUSED REDUNDANT CONDUIT, CABLE, AND TELEPHONE WIRING TO BE REMOVED BACK TO SOURCE WITHIN AREA OF WORK.
- GC AND SUBCONTRACTORS SHALL COORDINATE ANY CORE DRILLING, ELECTRICAL HOOK-UPS, ETC. WITH LANDLORD. ALL WORK TO BE PERFORMED IN ACCORDANCE WITH BUILDING RULES AND REGULATIONS DURING STATED BUILDING APPROVED HOURS.
- GC SHALL NOTIFY ARCHITECT FOR APPROVAL OF ALTERNATE LOCATIONS FOR OUTLETS REQUIRING RELOCATION DUE TO FIELD CONDITION. TO BE APPROVED BY ARCH PRIOR TO INSTALLATION
- EXISTING FIRE SAFETY DEVICES WITH CONFLICT WITH NEW PARTITIONS WORK SHALL BE RELOCATED TO AN APPROVED LOCATION.
- GENERAL CONTRACTOR IS TO ENSURE NO POWER OUTLETS CONNECTED TO LIGHTING CIRCUITS.
- ALL DEDICATED CIRCUIT BREAKERS TO RECEIVE TAMPER PROOF CIRCUIT BREAKER CLAIMPS
- GC IS TO REVISE AND UPDATE LABELS ON EXISTING ELECTRICAL PANELS
- GC TO COORDINATE WITH ELECTRICAL AND MILLWORK CONTRACTORS ALL REQUIRED OUT-OUT AND WIRING SPECIFICATIONS OF ALL FIXED AND FREE STANDING MILLWORK FIXTURES
- ELECTRICAL CONTRACTOR IS TO INCLUDE AND COORDINATE ELECTRICAL SCOPE FOR ALL HVAC, EXHAUST AND SPECIAL EQUIPMENT AS REQUIRED.
- ALL ELECTRICAL WORK PERFORMED IN CONNECTION WITH THE INSTALLATION OF TELEPHONE COMMUNICATIONS' SYSTEM SHALL BE IN ACCORDANCE WITH THE BUILDING MANAGEMENT AND TELEPHONE COMPANYS' RECOMMENDATIONS AND REQUIREMENTS, INCLUDING INSTALLATION OF REQUIRED CONDUIT FROM THE BUILDING TELEPHONE EQUIPMENT ROOM TO THE TENANTS SPACE.
- GC CONTRACTOR TO PROVIDE (1) 4x8x3/4" (FIRE RETARD. BIRCH VENEER) PLYWOOD PANEL ON 3/4" FURRING AS INDICATED ON PLAN. FOR TELEPHONE EQUIPMENT INSTALLATION U.O.N.
- GC SHALL VERIFY THE AVAILABLE ELECTRIC SERVICE IN THE TENANTS SPACE AND ADVISE THE ARCHITECT OF FINDINGS PRIOR TO SUBMITTING A BID. GC MUST VERIFY PRIOR TO BIDS, AND INCLUDE COST FOR A PROPERLY SIZED AND TYPE SERVICE REGARDLESS OF EX CONDITIONS AND LOCATION OF ELECTRIC ROOMS.
- GC TO NOTIFY ARCHITECT OF ANY CONDITION THAT WOULD PREVENT/DELAY INSTALLATION AS INDICATED.
- GC SHALL COORDINATE WITH MEP DRAWINGS FIRE STROBES, SPEAKERS, AND FIRE PULL STATIONS AS REQUIRED BY CODE. COORDINATE WITH BUILDING MANAGEMENT.
- GC TO LOCATE ALL OUTLETS AS PER THIS DRAWING. MEP DWGS FOR CIRCUITING AND POWER REQUIREMENTS ONLY.
- EXISTING SEPARATE CIRCUITS OR OTHER CIRCUITS BEING REMOVED IN DEMOLITION AND NOT REVISED IN THIS PROJECT SHALL BE DISCONNECTED AT THE PANEL BOARD CIRCUIT BREAKER. CIRCUIT BREAKER SHALL BE PLACED IN 'OFF' POSITION AND THE PANEL BOARD DIRECTLY CONNECTED TO INDICATE SPACE FOR RESPECTIVE CIRCUITS.
- TELEDATA EQUIPMENT SERVICE START UP BY OTHERS. GC TO PROVIDE JUNCTION BOX AND CONDUIT STUB UP TO 6" ABOVE DRYWALL WITH DRAG LINE FOR INSTALLATION THERE OF.
- GC TO COORDINATE LOCATION OF FLOOR & J BOXES WITH DISPLAY FIXTURE DWG & VENDOR.
- SECURITY CABLING, WIRES PULLED, & FINAL TERMINATION BY SECURITY VENDOR.
- ALL VENDORS TO PROVIDE THEIR OWN SCAFFOLDING.
- GC TO PROVIDE SECURED STORAGE FOR ALL AV EQUIPMENT UPON DELIVERY.
- GC TO PROVIDE ELECTRICAL WIRING/POWER FOR AV EQUIPMENT
- T.C. IS RESPONSIBLE FOR PROVIDING ANY REQUIRED CONDUITS, JUNCTION BOXES & DRAG LINES NEEDED FOR AV EQUIPMENT. COORDINATE W AV VENDOR.
- GC TO PROVIDE DISPOSAL CONTAINER FOR AV PACKING AND INSTALLATION MATERIALS
- GC TO COORDINATE AV INSTALLATION WITH AV VENDOR. GC RESPONSIBLE FOR ADDITIONAL LABOR AND TRAVEL CHARGES IF SITE IS NOT READY UPON AV VENDOR ARRIVAL.

**CONSTRUCTION KEY NOTES**

- P.O.S. POWER/DATA GROUPING, REFER TO GRAPHIC LEGEND FOR DESCRIPTION. POWER SUPPLY SHOULD BE CENTER RECESS AT BASE CABINET. CONDUITS WITHIN CASH WRAP SHOULD BE FLEX. GC TO PROVIDE SURGE PROTECTOR POWER STRIP 2X6 PORT RACK WITH 6" CHORD TO BE LOCATED AT DRAWER. COORDINATE WITH FAT FACE MILLWORKER.
- WALL MOUNTED DISPLAY WINDOW OUTLET TO BE ON TIME/CLOCK. FINISH TO MATCH ADJ. SURFACE
- GC TO CORE DRILL FOR CASHWRAP POWER.
- ELECTRIFIED LOCKSET TIED INTO BUILDING CLASS "E" SYSTEM. REFER TO HARDWARE SCHEDULE
- CEILING MOUNTED OUTLET FOR AIR CURTAIN

Issue	Date	Issue	Date
A. ISSUE FOR HISTORIC REVIEW	07/01/15	Δ ISSUE FOR HISTORIC REVIEW	07/16/15
B. ISSUE FOR L1 REVIEW/PRELIM	07/10/15	Δ ISSUE FOR HISTORIC REVIEW	07/23/15
PRICING			
C. ISSUE FOR DEMO PERMIT	07/20/15		
D. ISSUE FOR PERMIT	07/24/15		

Project  
**FAT FACE PORTLAND**  
34 EXCHANGE STREET  
PORTLAND, ME 04104

Drawing Title  
**GROUND FLOOR**  
**POWER COMMUNICATION PLAN**

Project No.	Drawn By	Date	Scale
5063.02	--	--	1/4"=1'-0"
Seal	Floors(s)	GROUND	
		Drawing No. <b>A-301.00</b>	

