

CLIENT/OWNER/TENANT

FAT FACE LTD  
1-3 RIDGWAY HAVANT, PO9 1QJ  
UNITED KINGDOM  
CONTACT: DAVID LILLEY  
TEL: 00442392.441100  
E: DAVID.LILLEY@FATFACE.COM

DESIGNER

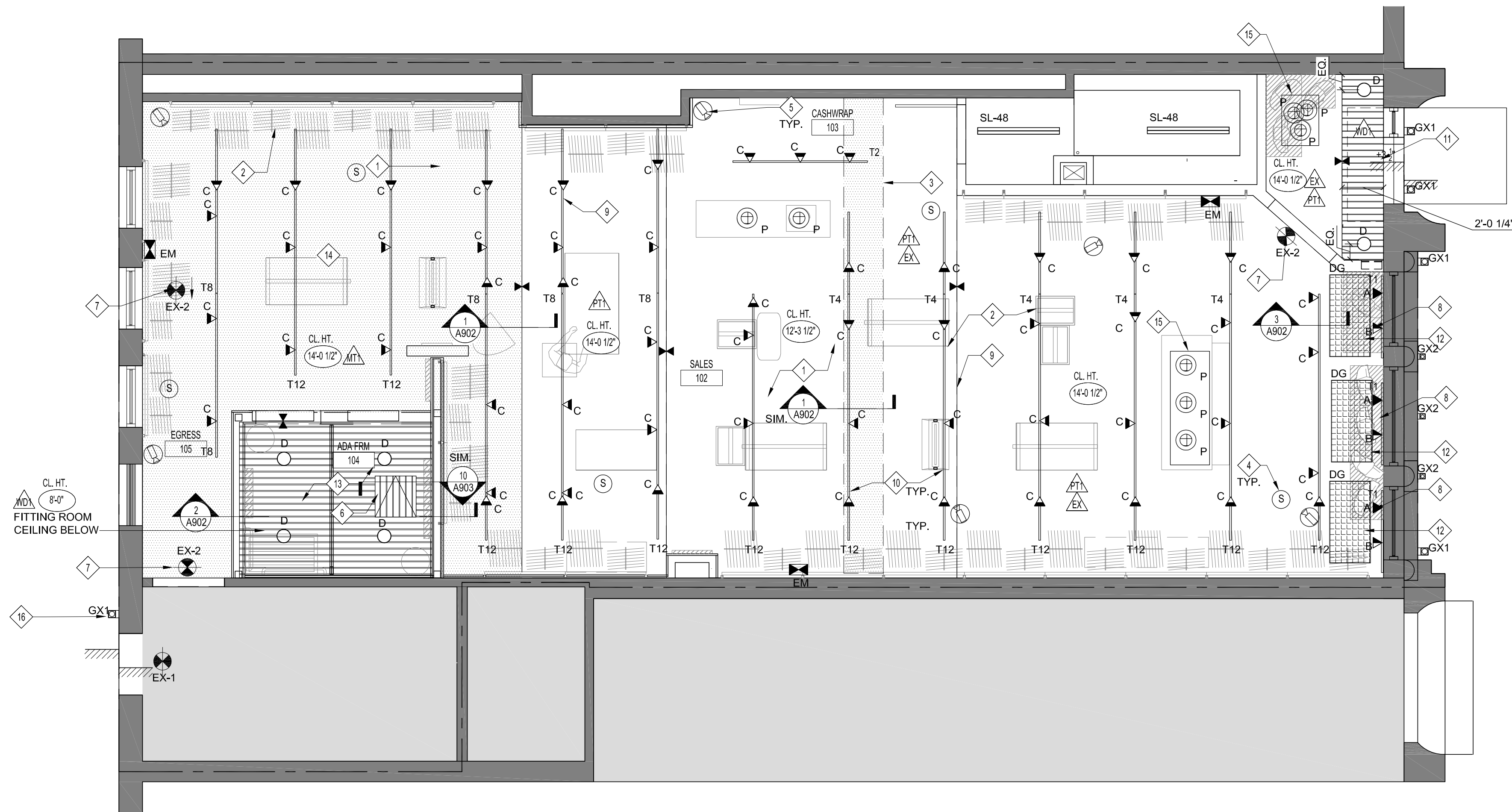
BOX OF FROGS LTD  
2 WILLOW PARK STOKES PAGES BUCKS SL2 4ES  
CONTACT: SARAH MALCOM-RICHARDS  
TEL: 00748609897  
E: SARAH@BOXOFFROGS.WEB.COM

MEP ENGINEER

FISKAA  
589 8TH AVENUE  
NEW YORK, NY, 10018  
CONTACT: ERIC MARTINSEN  
TEL: 212.736.9600  
E: EMARTINSEN@FISKAA.COM

STRUCTURAL ENGINEER

ARMOUR UNSDERFER ENGINEERING INC. P.S.  
555 116TH AVE NE, SUITE 118  
BELLEVUE WA 98004  
CONTACT: BRIAN UNSDERFER  
TEL: 425.614.0949  
E: brianu@au-eng.com



CEILING LEGEND

- AREAS NOT IN CONTRACT
- EXISTING CONSTRUCTION TO REMAIN
- INDICATES EXISTING TIN CEILING TO BE FIRE TREATED AS REQUIRED
- INDICATES NEW FIRE TREATED BEAD AND BUTT CEILING
- INDICATES EXISTING BRICK VAULTED CEILING TO REMAIN.
- INDICATES NEW FIRE TREATED TIN CEILING TO MATCH EXISTING TIN AND TO ALIGN WITH ADJACENT TIN CEILING HEIGHT
- INDICATES NEW GYPSUM BOARD SOFFIT & FASCIA, PAINTED.
- INDICATES CEILING HEIGHT ABOVE FINISHED FLOOR
- SYMBOL INDICATES NEW LIGHT SWITCH @ 3'-2" AFF & 6" FROM EDGE OF DOOR FRAME. PROVIDE GANGED FACE PLATE AS REQUIRED. "LEVITON" DECORA. COLOR: WHITE. SEE ENGR. DWGS. FOR FIXTURES CONTROLLED BY SWITCHES OR SENSORS.
- INDICATES CEILING FINISH - SEE FINISH SCHEDULE FOR MORE INFORMATION
- INDICATES WALL MOUNTED 3-WAY LIGHT SWITCH
- INDICATES WALL MOUNTED DIMMER SWITCH. PROVIDE GANG PLATE AS REQD. LEVITON DECORA, WHITE.
- INDICATES CEILING MOUNTED JUNCTION BOX. VERIFY W/ ARCHITECT.
- INDICATES NEW RECESSED CEILING MOUNTED EXIT LIGHT MFR/MODEL NO. "ATLIGHT" EDELIT LED SERIES. 8" LETTERS, RED ON MIRROR MYLAR, WHITE. PROVIDE DIRECTIONAL ARROWS AS INDICATED.
- INDICATES A CHANGE IN MATERIAL. NEW TO OLD OR EVEN HEIGHT.
- SECURITY CAMERA, BY FAT FACE VENDOR
- SPEAKER BY FAT FACE VENDOR

RCP NOTES

1. GENERAL CONTRACTOR IS RESPONSIBLE FOR COORDINATING ALL CEILING RELATED TRADES. G.C. SHALL SUBMIT A COORDINATED LAYOUT SHOP DRAWING INDICATING ALL LIGHTING, DIFFUSER, SPRINKLER, LIFE SAFETY DEVICE, AND SECURITY DEVICE LOCATIONS TO ARCHITECT /MEP FOR REVIEW AND APPROVAL PRIOR TO CONSTRUCTION.
2. SEE ELECTRICAL ENGINEERING DRAWINGS FOR ALL LIGHT FIXTURE CIRCUITING, SWITCHING, AND RELATED WORK MODIFICATIONS. ALL SWITCH LOCATIONS TO BE DETERMINED BY ARCHITECT
3. SEE ENGINEERING DRAWINGS FOR ALL FIRE ALARM WORK INCLUDING, LIMITED TO LOCATIONS OF ALL DEVICES. COORDINATE WITH ARCHITECT FOR FINISH LOCATION.
4. IN CASE OF DISCREPANCY BETWEEN THE ARCHITECT'S AND/OR ENGINEER'S DRAWINGS, THE CONTRACTOR IS TO INFORM ARCHITECT OF ANY SUCH DISCREPANCY PRIOR TO BID AND PERFORMANCE OF THE WORK.
5. ALL DIMENSIONS ARE TO BE COORDINATED IN FIELD AND ARE SUBJECT TO EXISTING CONDITIONS. ALL CEILING HEIGHTS SHALL BE AS NOTED ABOVE FINISHED FLOOR. G.C. SHALL NOTIFY THE ARCHITECT OF ANY CONDITIONS THAT WOULD PREVENT OR DELAY THE INSTALLATION AS INDICATED. ALL DIMENSIONS MARKED AS EQUAL (EQ.) APPLY ONLY WITHIN A GIVEN ALIGNED STRING OF DIMENSIONS UNLESS OTHERWISE NOTED.
6. PRIOR TO CONSTRUCTION, GENERAL CONTRACTOR IS TO VERIFY THAT THERE IS SUFFICIENT ELECTRICAL POWER AVAILABLE ON THE EXISTING ELECTRICAL PANEL TO COMPLETE THE INSTALLATION AS INDICATED. COORDINATE WITH MEP DRAWINGS.
7. ALL HVAC GRILLES, DIFFUSERS, RETURNS, SPRINKLER HEADS, SPEAKERS AND LIFE SAFETY DEVICES ARE TO BE CENTERED ON LIGHTING LAYOUT OR AS DETERMINED BY ARCHITECT. ALL SPRINKLER HEADS AND SPEAKERS ARE TO BE FLUSH MOUNTED AT ALL GYPSUM BOARD AND ACT CEILINGS. COORDINATE WITH MEP DRAWINGS.
8. RETURNS, SPRINKLER HEAD CAPS, AND SPEAKERS ARE TO MATCH ADJ CEILING FINISH.
9. THE GENERAL CONTRACTOR IS RESPONSIBLE FOR ALL LIGHT FIXTURE LAMPING UNTIL COMPLETION OF PUNCH LIST. THE G.C. SHALL THOROUGHLY CLEAN ALL LIGHT FIXTURES PRIOR TO PROJECT COMPLETION.
10. ALL CEILING GRIDS TO BE CENTERED ON THE ROOM, UNLESS OTHERWISE NOTED ON PLAN THE G.C. SHALL PROVIDE AN UNOPENED BOX OF CEILING TILES TO THE TENANT/OWNER UPON COMPLETION OF THE PUNCH LIST.
11. ACCESS DOORS REQUIRED BY ALL HVAC EQUIPMENT SHALL BE SIZED AND LOCATED BY GENERAL CONTRACTOR AND SUBMITTED TO ARCHITECT FOR APPROVAL.
12. ALL WOOD AND PLYWOOD BACKING AND BLOCKING IS TO BE FIRE RESISTANT TREATED (FRT). NO WOOD OF ANY KIND IS TO BE EXPOSED WITHIN ANY CEILING PLENUM. GENERAL CONTRACTOR IS RESPONSIBLE FOR ALL BACKING, BLOCKING, AND SUPPORT AT ALL WALL AND CEILING HUNG FIXTURES.

RCP KEY NOTES

13. ALL COVER PLATES TO MATCH ADJ. WALL COLOR.
14. WHERE APPLICABLE ALL LIGHTING FIXTURES TO BE LOCATED IN THE CENTER OF THE CEILING TILE UNLESS OTHERWISE NOTED. NOTIFY ARCHITECT OF ANY DISCREPANCIES.
15. NEW SMOKE DETECTORS AND/OR FIRE ALARM STROBES ETC. SHALL BE FURNISHED AND INSTALLED AS REQUIRED. REFER TO ENGINEERING DRAWINGS.
16. G.C. TO PROVIDE THE CORRECT LIGHT FIXTURE EDGE MOUNTING "PROFILE" DETAIL WITHIN THE NEW CEILING GRID.
17. PROVIDE SUBMITTALS FOR ARCHITECT TO REVIEW PRIOR TO THE RELEASE OF ORDERS.
18. CEILING HEIGHT TO BE 8'-4" UNLESS OTHERWISE NOTED G.C. TO COORDINATE ANY DISCREPANCIES WITH ARCHITECT PRIOR TO COMMENCEMENT.
19. PATCH AND REPAIR SLAB + BEAMS THROUGHOUT FOR NEW FINISH, REFER TO FINISH SCHEDULE.
20. ACCESS PANELS MUST BE PROVIDED FOR ALL LANDLORD SERVICEABLE EQUIPMENT, WHICH IS ABOVE ANY HARD CEILING AREAS. SUPPLY VENTS AND RETURN AIR GRILLS ARE ALLOWED AS A MEANS OF ACCESS. UNITS ABOVE HARD CEILING MUST HAVE A WORK PLATFORM CONSTRUCTED ABOVE THE CEILING FOR UNIT SERVICING. IF A WORK PLATFORM IS NOT CONSTRUCTED, A LETTER MUST BE SUBMITTED TO THE LANDLORD UPON JOB CLOSEOUT STATING THAT THE CEILING IS RATED TO WITHSTAND ALL ASSOCIATED WEIGHT WHILE SERVICING THE EQUIPMENT ABOVE.
21. SHOP DRAWINGS SHALL BE SUBMITTED TO ARCHITECT FOR REVIEW AND APPROVAL PRIOR TO CONSTRUCTION FOR ALL SPRINKLER HEAD LOCATIONS. G.C. TO COORDINATE ANY REQUIRED SPRINKLER LOCATION MODIFICATIONS.
22. GENERAL CONTRACTOR SHALL PROVIDE APPROPRIATE OPENINGS IN FULL HEIGHT DRYWALL PARTITIONS PER ENGINEERING DRAWINGS. OPENINGS ARE TO BE FRAMED AND FIRE STOPPED/ DAMPERED AS REQUIRED.
23. ALL HVAC GRILLES, DIFFUSERS, RETURNS, SPRINKLER HEADS, SPEAKERS AND LIFE SAFETY DEVICES ARE TO BE CENTERED ON LIGHTING LAYOUT (ALONG STRAIGHT OR DIAGONAL LINE UNLESS OTHERWISE NOTED). ALL SPRINKLER HEADS AND SPEAKERS ARE TO BE FLUSH MOUNTED AT ALL GYPSUM BOARD AND ACT CEILINGS.
24. RETURNS, SPRINKLER HEAD CAPS, AND SPEAKERS ARE TO BE THE SAME COLOR AS SURROUNDING SOFFIT/ CEILING.
26. THE GENERAL CONTRACTOR IS RESPONSIBLE FOR ALL LIGHT FIXTURE LAMPING UNTIL COMPLETION OF PUNCH LIST. THE G.C. SHALL THOROUGHLY CLEAN ALL LIGHT FIXTURES PRIOR TO PROJECT COMPLETION.
27. GENERAL CONTRACTOR IS TO COORDINATE WITH SECURITY VENDOR FOR LOCATION, CONNECTION, AND WIRING OF ALL CAMERAS, INFRARED SENSING DEVICES, ETC. G.C. IS TO SUPPLY ALL POWER AND DATA CABLING AS REQUIRED.
28. GENERAL CONTRACTOR TO PROVIDE ACCESS TO ALL LANDLORD UTILITIES AND DAMPERS AS REQUIRED.
29. EMERGENCY LIGHTING TO BE IN COMPLIANCE PER CODE. TBD BY ELECTRICAL.

ALL EXISTING CEILINGS TO REMAIN AND STRUCTURE TO FIRE TREATED WITH FIRE-KOTE 100 FLAME RETARDANT

1. ALL EXISTING CEILINGS TO REMAIN AND STRUCTURE TO FIRE TREATED WITH FIRE-KOTE 100 FLAME RETARDANT
2. LINE OF MILLWORK FIXTURES BELOW.
3. PATCH, REPAIR AND PAINT TO MATCH EXISTING TIN CEILING AS REQUIRED OR WHERE REMOVING PARTITIONS, GC TO REPLACE ANY PARTIAL OR DAMAGED TILES WITH NEW FULL TILE. GC TO PROVIDE SAMPLE TO OWNER/ARCHITECT FOR TIN CEILING INFILL FOR APPROVAL
4. SPEAKERS TO BE SURFACE MOUNTED. GC TO COORDINATE SPEAKER COLOR TO MATCH CEILING COLOR. GC TO COORDINATE FINAL LOCATION WITH VENDOR AS REQUIRED.
5. SECURITY CAMERA. COORDINATE WITH VENDOR ON FINAL LOCATION AS REQUIRED
6. ACCESS PANEL, REFER TO DETAIL
7. EXIT SIGN TO BE PENDANT MOUNTED AND FULLY VISIBLE THROUGHOUT SALES AREA AT LOWEST CEILING HEIGHT. SIGN NOT TO BE OBSTRUCTED BY GYP BOARD CEILING
8. STOREFRONT WINDOW LIGHTING TO BE ON TIMELOCK.
9. LINE OF EXISTING CEILING.
10. FINAL LOCATION OF LIGHTING TO BE VERIFIED IN FIELD BY THE GC PRIOR TO INSTALL. LIGHTING TO BE SECURED TO EXISTING CEILING JOISTS.
11. AIR CURTAIN BY G.C. SEE MECHANICAL DRAWINGS FOR MORE INFORMATION.
12. CEILING MOUNTED DISPLAY GRID. SEE DETAIL 3/A204
13. MECHANICAL PLATFORM. SEE STRUCTURAL DRAWINGS FOR MORE INFORMATION.
14. EXISTING DECK AND JOIST TO BE FIRERATED PRIOR TO INSTALLATION OF NEW TIN CEILING
15. GC TO PROVIDE FIRE RATED BLOCKING AS REQUIRED.
16. EXTERIOR LIGHT TO BE CONNECTED TO MOTION SENSOR. SEE ELECTRICAL DRAWINGS FOR MORE INFORMATION

LIGHT FIXTURE SCHEDULE

SYMBOL/TAG	MFT./MODEL PLEASE PROVIDE US EQUIVALENT TO FOLLOWING SPECIFICATIONS:	LAMP	REMARKS
T4, T8, T12	IGUZZINI I.0166/I.0167/I.0168 - 120-01	---	SURFACE MOUNTED 2 CIRCUIT TRACK. 4'8" / 12' LENGTHS
A	IGUZZINI I.MK85-120-01	55W LED	TRACK MOUNTED SPOT LIGHT WITH FLOOD OPTIC. FINISH: WHITE
B	IGUZZINI I.MK87-120-01	55W LED	TRACK MOUNTED SPOT LIGHT WITH SPOT OPTIC. FINISH: WHITE
C	IGUZZINI I.ML00-120-01	40.8W LED	TRACK MOUNTED SPOT LIGHT WITH FLOOD OPTIC. FINISH: WHITE
C1	IGUZZINI I.MB35-120-01	27W LED	TRACK MOUNTED SPOT LIGHT WITH FLOOD OPTIC. FINISH: WHITE
P	TBD	TBD	CUSTOM PENDANT LIGHT FIXTURE. SPECIFICATIONS TBD
D	IGUZZINI I.ME30-01	52W LED	RECESSED CAN LIGHT FINISH: WHITE
EX-1	'ATLITE': AUXSWHSD6		WALL MOUNTED EXIT SIGN W/90 MIN BATTERY BACKUP
EX-2	'ATLITE': AUXSWHSD6		EXIT SIGN W/90 MIN BATTERY BACKUP WITH PENDANT MOUNTING KIT
EM	SURE-LITES: CC3 WH_MRT		EMERGENCY LIGHT W/90 MIN BATTERY BACKUP
SL	LITHONIA LIGHTING C-2-48T8-120 / C-2-48T8-120	PHILLIPS 48T8	SURFACE MOUNTED STOCK ROOM LIGHTING TO BE MOUNTED AS HIGH AS POSSIBLE
LP-1	PIXI 1X4 FLATLIGHT - FLT14C40MDUP44-A	EDGEIT 4000K LED PANEL	LED PANEL SURFACE MOUNTED MANAGERS OFFICE AND PANTRY
F	COMMERCIAL ELECTRIC/ 5419411	LED	UNDER CABINET LIGHTING @ MANAGERS OFFICE AND PANTRY
GX1	IGUZZINI I.BD49-UNV-15	LED	EXTERIOR LIGHTING
GX2	IGUZZINI I.BK21-UNV-15	LED	EXTERIOR LIGHTING

Issue	Date	Issue	Date
A. ISSUE FOR HISTORIC REVIEW	07/01/15	Δ. ISSUE FOR HISTORIC REVIEW	07/16/15
B. ISSUE FOR LR REVIEW/PRELIM	07/10/15	Δ. ISSUE FOR HISTORIC REVIEW	07/23/15
PRICING			
C. ISSUE FOR DEMO PERMIT	07/20/15		
D. ISSUE FOR PERMIT	07/24/15		

Project  
**FAT FACE PORTLAND**  
34 EXCHANGE STREET  
PORTLAND, ME 04104

REFLECTED CEILING PLAN

Project No.	Drawn By	Date	Scale
5063.02	--	--	1/4"=1'-0"

Seal

Barry Michael Luciflow  
ARC4239

Drawing No. **A-201.00**

GROUND