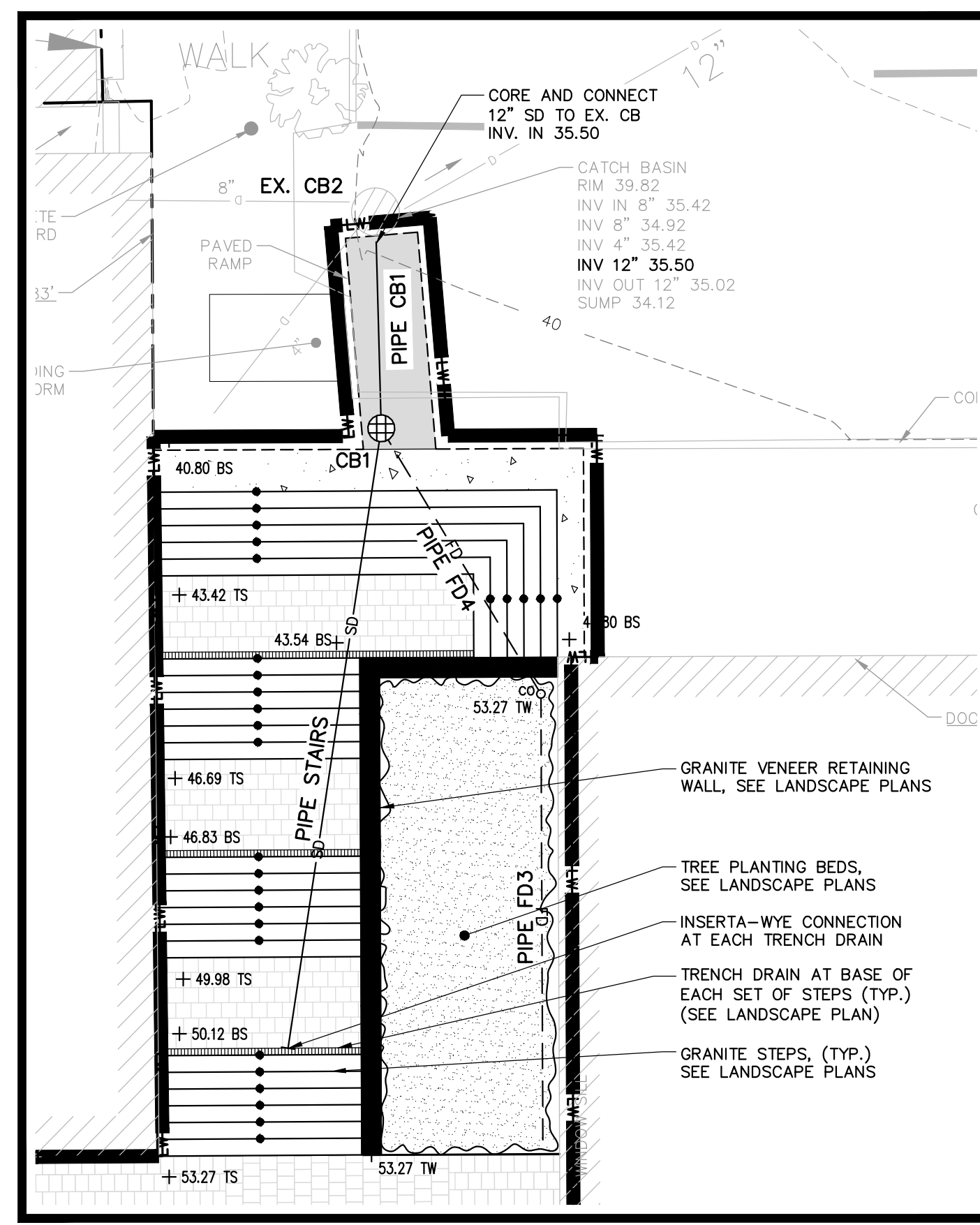


1 CANAL PLAZA 10 STORY BRICK BUILDING

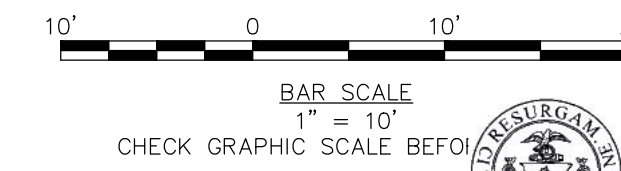


INSET A
SCALE: 1" = 10'

STRUCTURE TABLE					PIPE TABLE				
NAME	DIA.	GRATE	RIM	INV IN/SIZE/FROM	INV OUT/TO	PIPE NAME	SIZE	LENGTH	SLOPE
CB1	48"	24"	40.80	35.75/12"SD/ 36.75/6"SD/	35.65/12"SD/EX. CB2	PIPE CB1	12" SD	12'	0.0120
CB2	48"	24"	53.47	46.12/12"SD/CB3 47.12/6"SD/	46.02/12"SD/EX. CB1	PIPE CB2	12" SD	119'	0.0698
CB3	18"	10"	53.05	47.36/8"SD/DB9	47.26/12"SD/CB2	PIPE CB3	12" SD	114'	0.0100
DB1	12"	10"	53.03		46.48/8"SD/	PIPE DB1	8" SD	4'	0.0100
DB2	18"	10"	52.97	47.34/8"SD/DB4 47.34/8"SD/DB3	46.96/10"SD/	PIPE DB2	10" SD	48'	0.0100
DB3	12"	10"	52.97		47.45/8"SD/DB2	PIPE DB3	8" SD	11'	0.0100
DB4	12"	10"	52.98		47.48/8"SD/DB2	PIPE DB4	8" SD	14'	0.0100
DB5	12"	10"	52.89		46.99/8"SD/	PIPE DB5	8" SD	16'	0.0100
DB6	18"	10"	52.91	48.61/8"SD/DB7 48.61/8"SD/DB8	47.41/10"SD/	PIPE DB6	10" SD	38'	0.0100
DB7	12"	10"	52.96		48.69/8"SD/DB6	PIPE DB7	8" SD	8'	0.0100
DB8	12"	10"	52.91		48.76/8"SD/DB6	PIPE DB8	8" SD	15'	0.0100
DB9	18"	10"	53.24	47.76/8"SD/DB10	47.66/8"SD/CB3	PIPE DB9	8" SD	30'	0.0100
DB10	12"	10"	52.95		48.21/8"SD/DB9	PIPE DB10	8" SD	45'	0.0100
EX. CB1	48"	24"	41.71	37.71/12"SD/CB2	SEE PLAN VIEW FOR EXISTING INVERTS	PIPE FD1	6" SD	46'	0.0050
EX. CB2	48"	24"	39.82	35.50/12"SD/CB1		PIPE FD2	6" SD	19'	0.0739
						PIPE FD3	6" SD	33'	0.0050
						PIPE FD4	6" SD	21'	0.5466
						PIPE RD1	6" RD	32'	0.0100
						PIPE STAIRS	12" SD	45'	0.1534

NOTE:

- FOUNDATION DRAIN INVERTS ARE APPROXIMATE. FIELD VERIFICATION OF EXISTING FOUNDATION DEPTH REQUIRED TO CONFIRM INVERTS.

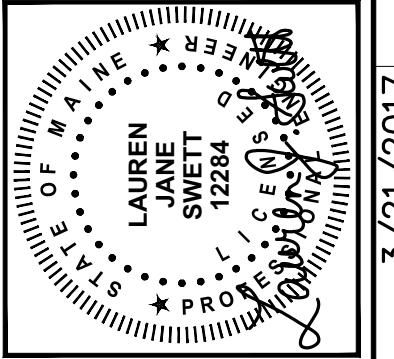


41 Hutchins Drive
Portland, Maine 04102
800.426.4262 | www.woodardcurran.com

WOODARD & CURRAN

COMMITMENT & INTEGRITY DRIVE RESULTS

THIS DOCUMENT IS THE PROPERTY OF WOODARD & CURRAN, INC. AND ITS CLIENT. REPRODUCTION OR MODIFICATION WITHOUT WRITTEN PERMISSION IS PROHIBITED.



REV	DESCRIPTION	DATE
1	ADDENDUM 1	3/21/2017
2	REVISED WATER SERVICE	10/11/16

CHECKED BY: DAS
DESIGNED BY: LJS
DRAWN BY: JBC

ENLARGED PLAZA GRADING PLAN

CANALSSTUDIO

ZERO CANAL PLAZA DEVELOPMENT

JOB NO.: 229311
DATE: SEPTEMBER 19, 2016
SCALE: 1" = 10'
SHEET NO. C-203

CITY OF PORTLAND
APPROVED SITE PLAN
Subject to the terms of Approval and Standard Conditions

E:\Projects\229311\east brown csw - canal plaza.infill.dwg, Mar 21, 2017 - 1:14pm