

Safety Signage Schedule

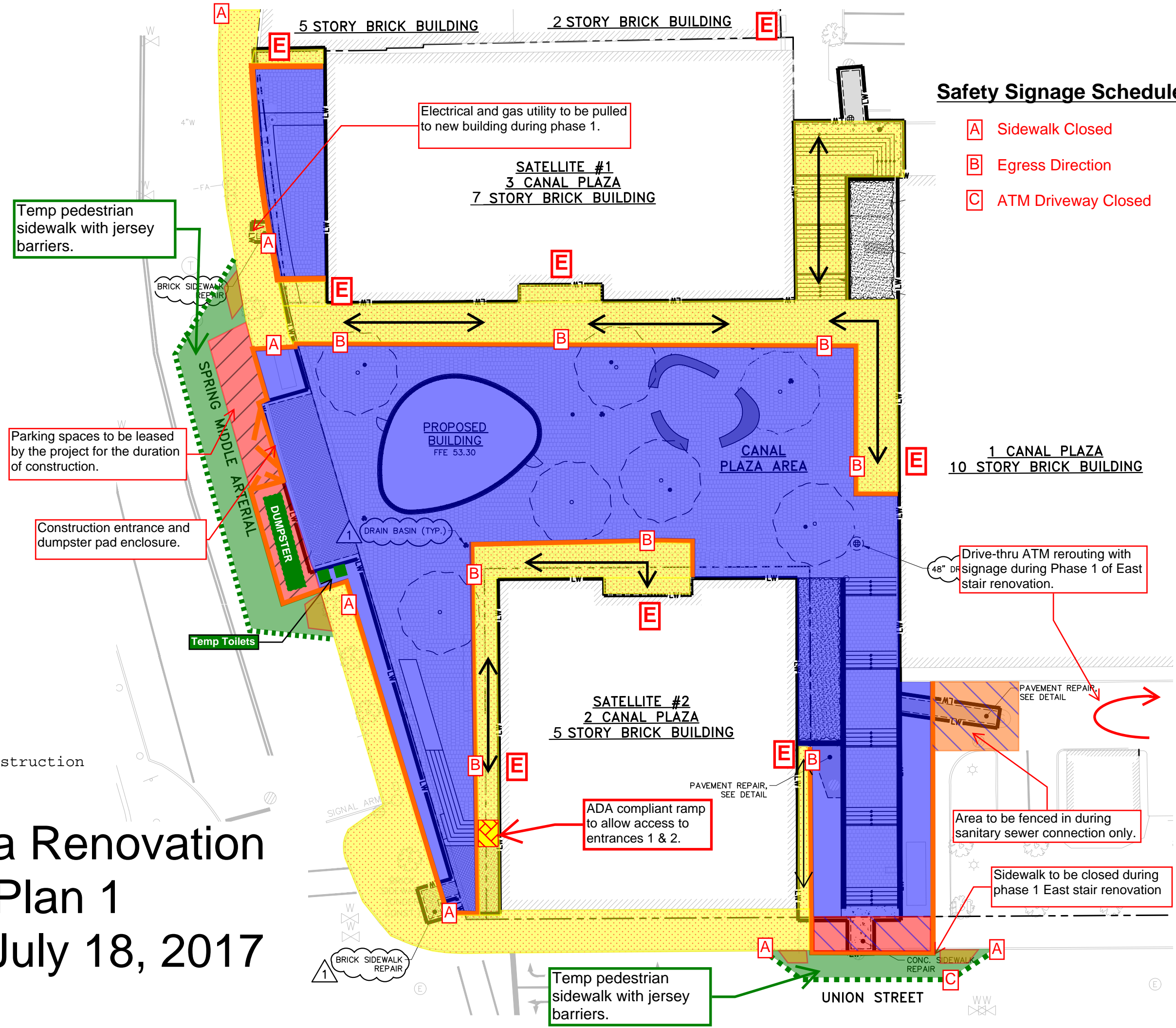
- A Sidewalk Closed
- B Egress Direction
- C ATM Driveway Closed

Canal Plaza Logistics Plan General Notes

1. Contractor parking to occur off site
2. To the greatest extent possible deliveries will be staged to avoid queuing outside the construction fence.
3. Construction fence will be established to create temporary pedestrian access to building entries marked E
4. Building entrances will be maintained throughout the duration of the project. Demolition and paver installation will occur during weekends.
5. Utility work and connections will be coordinated with the city prior to execution of work.
6. Informational/directional signage will be installed for the use of pedestrians and building occupants.

- Construction Fence
- Pedestrian Access
- Construction Area
- Construction Entrance
- Parking Spaces Used During Construction

Zero Canal Plaza Renovation Logistics Plan 1 April 17, 2017 - July 18, 2017








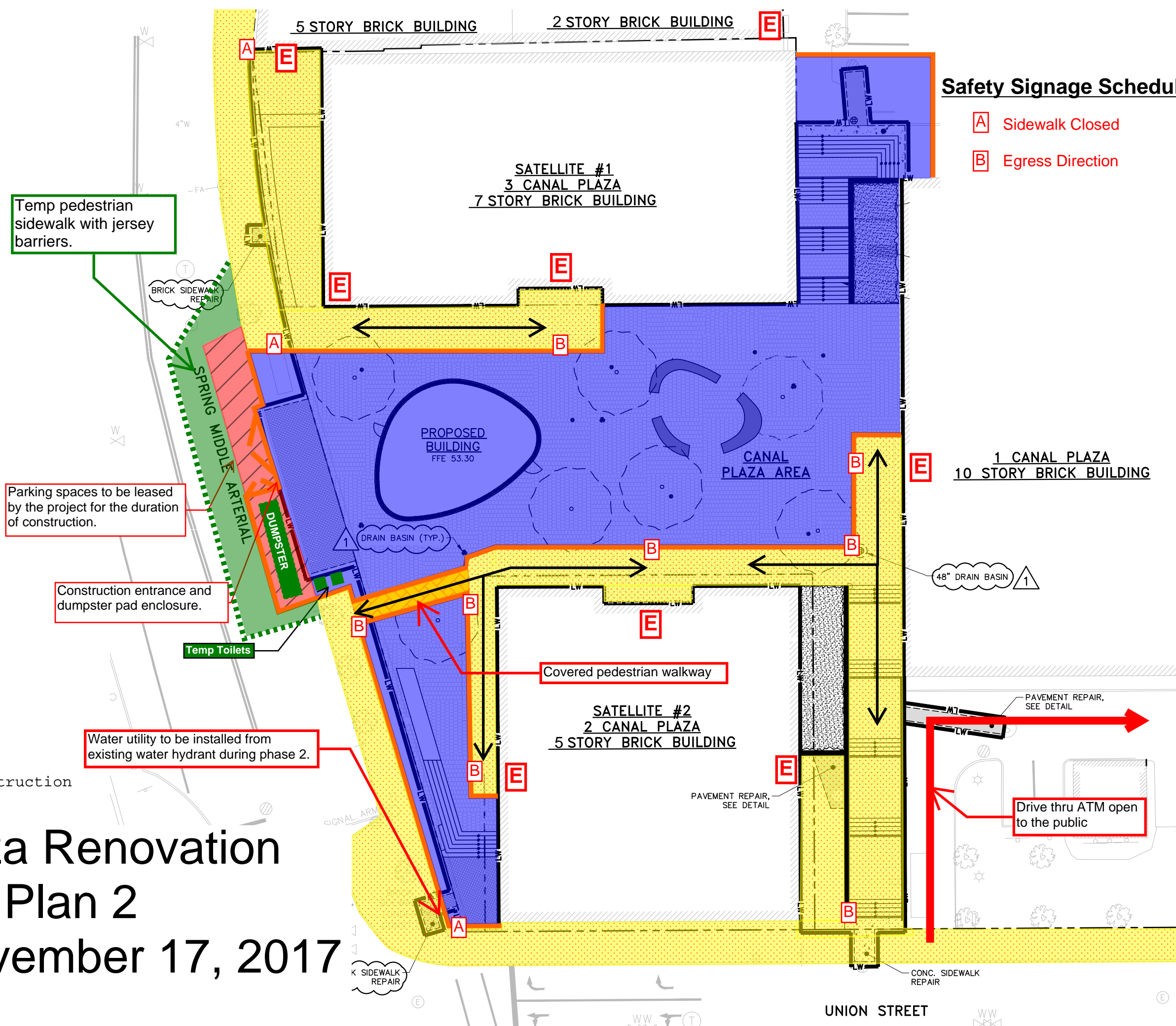
Canal Plaza Logistics Plan General Notes

1. Contractor parking to occur off site
2. To the greatest extent possible deliveries will be staged to avoid queuing outside the construction fence.
3. Construction fence will be established to create temporary pedestrian access to building entries marked **E**
4. Building entrances will be maintained throughout the duration of the project. Demolition and paver installation will occur during weekends.
5. Utility work and connections will be coordinated with the city prior to execution of work.
6. Informational/directional signage will be installed for the use of pedestrians and building occupants.

Safety Signage Schedule

- A** Sidewalk Closed
- B** Egress Direction

-  Construction Fence
-  Pedestrian Access
-  Construction Area
-  Construction Entrance
-  Parking Spaces Used During Construction



Zero Canal Plaza Renovation Logistics Plan 2

July 19, 2017 - November 17, 2017