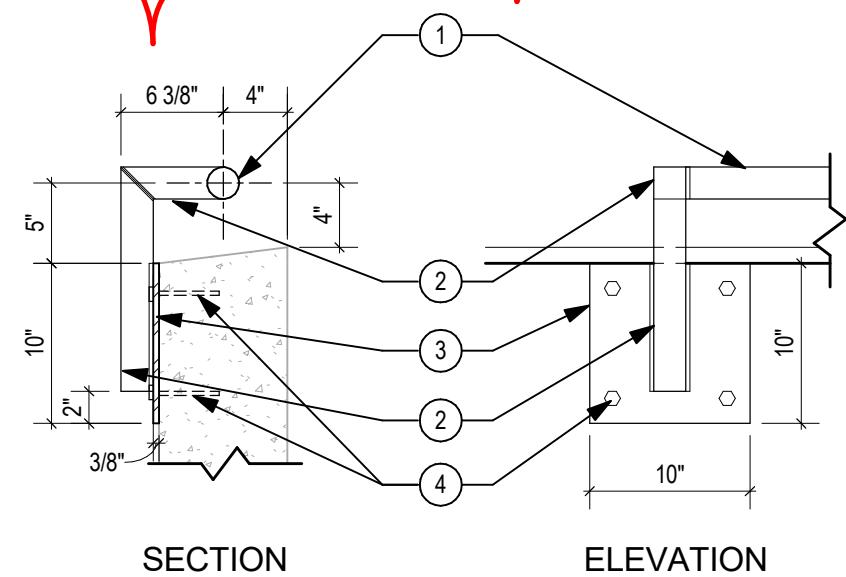


- ① 2" NOM. ALUM. SCHDL 40 PIPE
GRADE 6061-T6
- ② 2" X 2" X 0.1875
GR 6061-T6 SQ. TUBE
- ③ ALUM PLATE 10"X10"X3/8"
W/(4) 1/2" DIA. SS EPOXY ANCHORS
W/4" EMBED
GRADE 5052 ALUMINUM
- ④ STAINLESS STEEL EPOXY
ANCHORS W/4" EMBED. (GC TO
VERIFY COMPATIBILITY WITH
CONTACT WITH ALUMINUM).



SECTION

ELEVATION

① Light Bracket Elevation
1/2" = 1'-0"

② Lighting Bracket Detail
1" = 1'-0"

OCT. 11, 2016