

GROUND FLOOR & FOUNDATION PLAN
 $\frac{1}{8} = 1'-0"$

NOTE: TOP OF ALL PIERS @ EL. 33.89 UNLESS SHOWN OTHERWISE ON PLAN

TYPICAL INTERIOR FOOTING & PIER
 $\frac{3}{8} = 1'-0"$

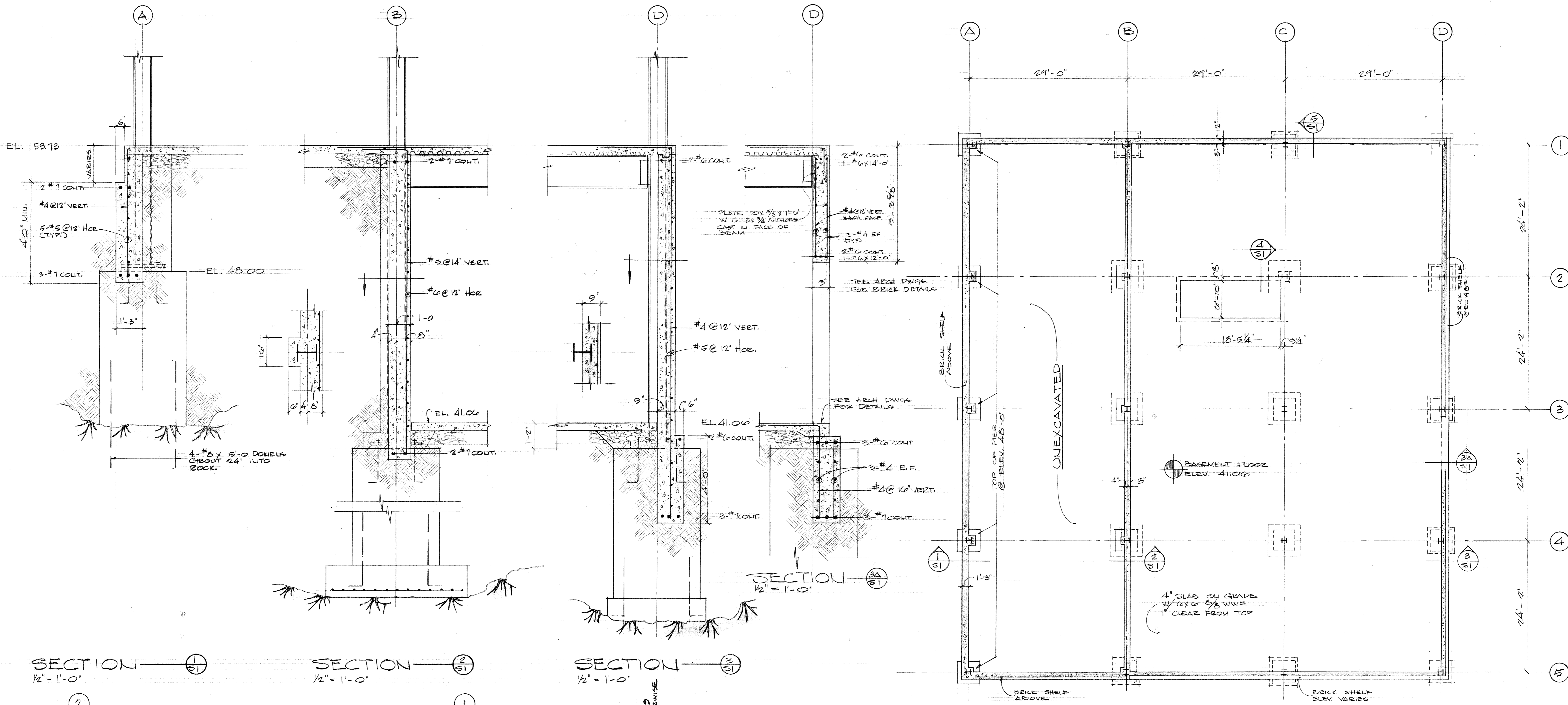
TYPICAL EXTERIOR FOOTING & PIER
 $\frac{3}{8} = 1'-0"$

- NOTE:
1. ALL FOOTINGS TO BEAR ON SOUND ROCK CAPABLE OF SUPPORTING A SUPERIMPOSED LOAD OF 10 TONS PER SQUARE FOOT
 2. SLAB ON GRADE SHALL BE PLACED ON 8" OF COMPACTED GRAVEL, ALL RUBBLE & FILL MATERIAL SHALL BE REMOVED FROM BELOW SLABS AND REPLACED WITH COMPACTED FILL

- ▲ DRIVE UP WINDOW AREA REVISED 8-15-72
- ▲ REVISED OR ADDITIONS 7-5-72

1 CANAL - FOUNDATION PLAN - DETAILS

	FFF FREEMAN · FRENCH · FREEMAN ARCHITECTS · BURLINGTON, VERMONT	CANAL PLAN CANCELLED GROUND FLOOR & FOUNDATION	DRAWN BY LPD CHECKED AL SCALE AS SHOWN DATE MAY 15, 72	PROJECT NO. 1618A DRAWING NO. S1
--	--	--	---	---

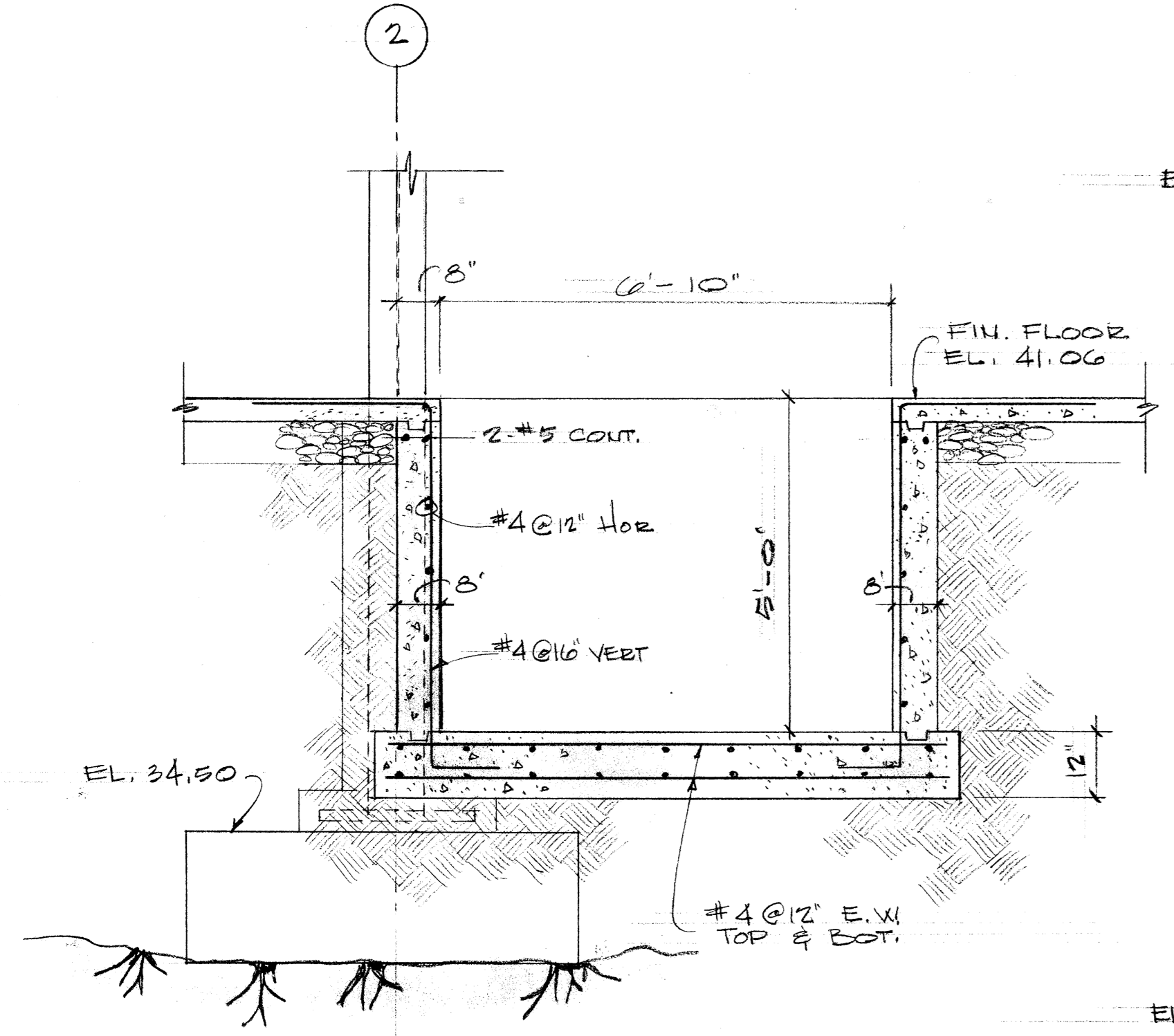


SECTION ①
1/2" = 1'-0"

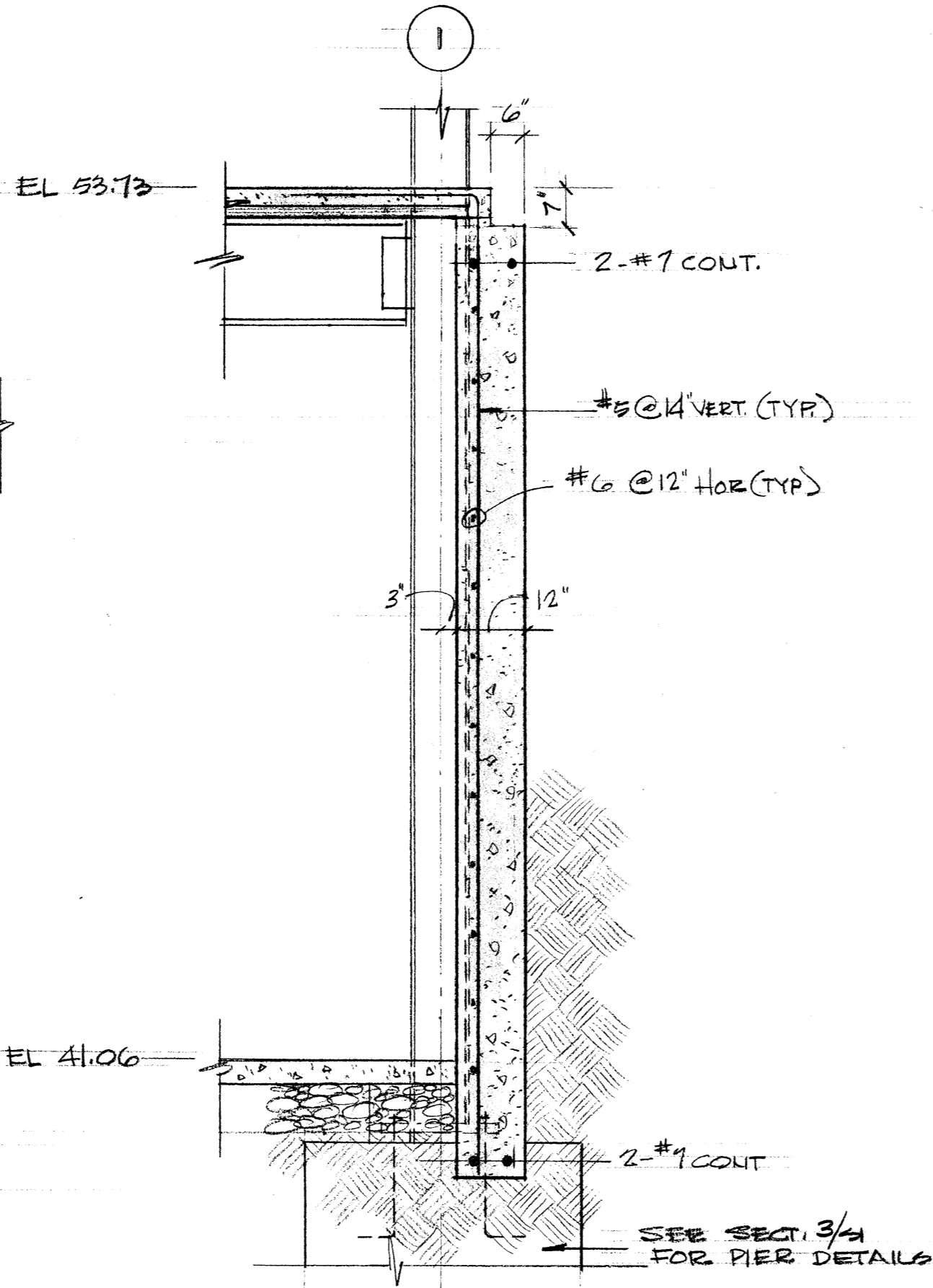
SECTION ②
1/2" = 1'-0"

SECTION ③
1/2" = 1'-0"

BASEMENT FLOOR & FOUNDATION PLAN
3/8" = 1'-0"

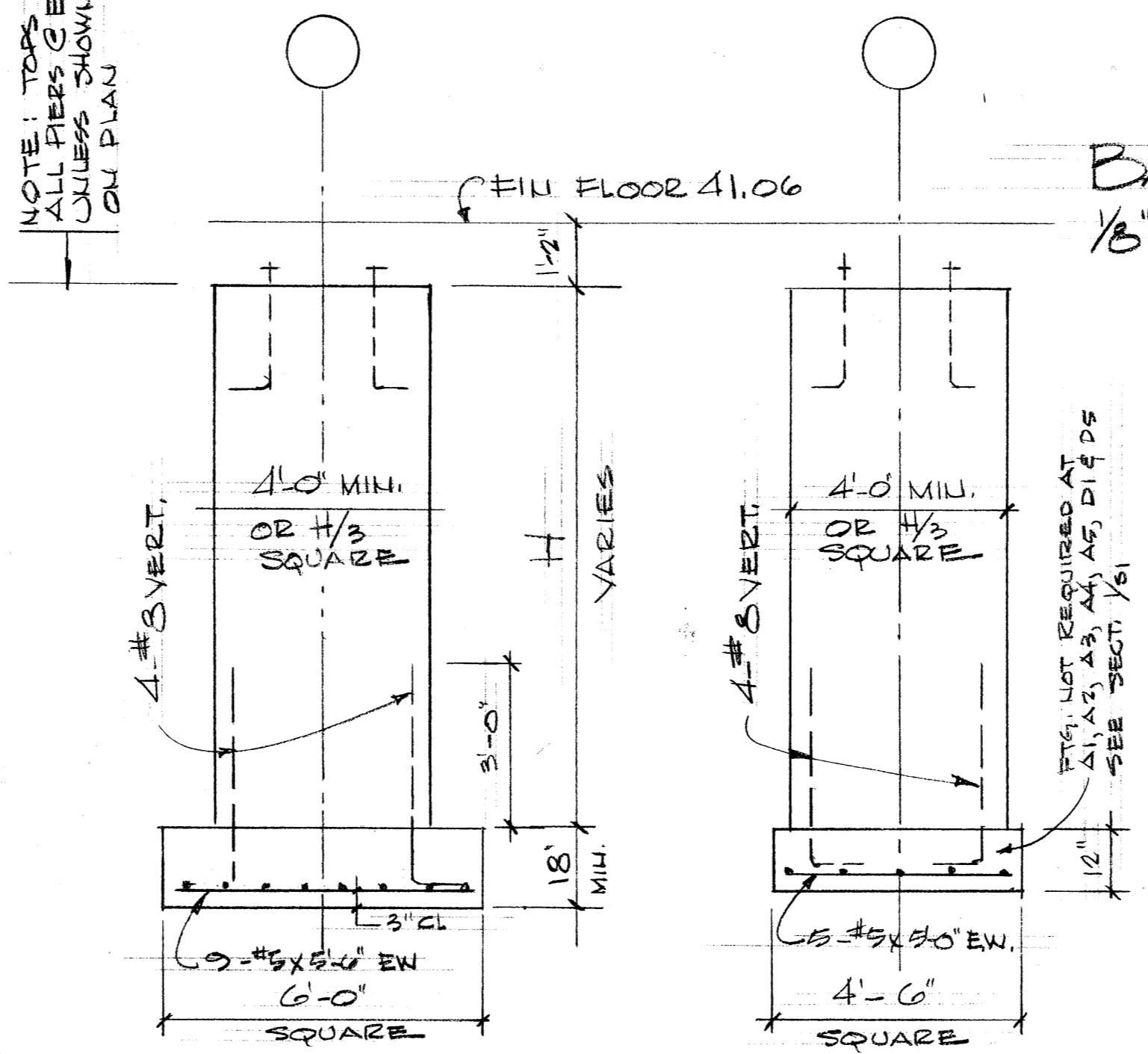


SECTION ④
1/2" = 1'-0"



SECTION ⑤
1/2" = 1'-0"

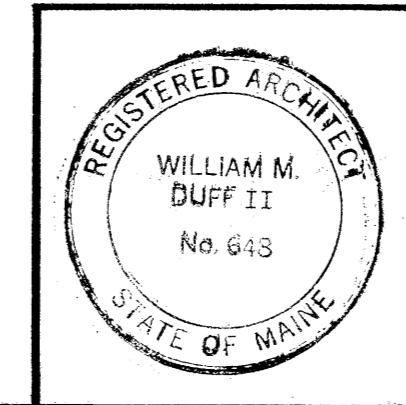
NOTE: TOPS OF ALL PIERS @ EL. 39.83 UNLESS SHOWN OTHERWISE ON PLAN



TYPICAL INTERIOR FOOTING & PIER
3/8" = 1'-0"

TYPICAL EXTERIOR FOOTING & PIER
3/8" = 1'-0"

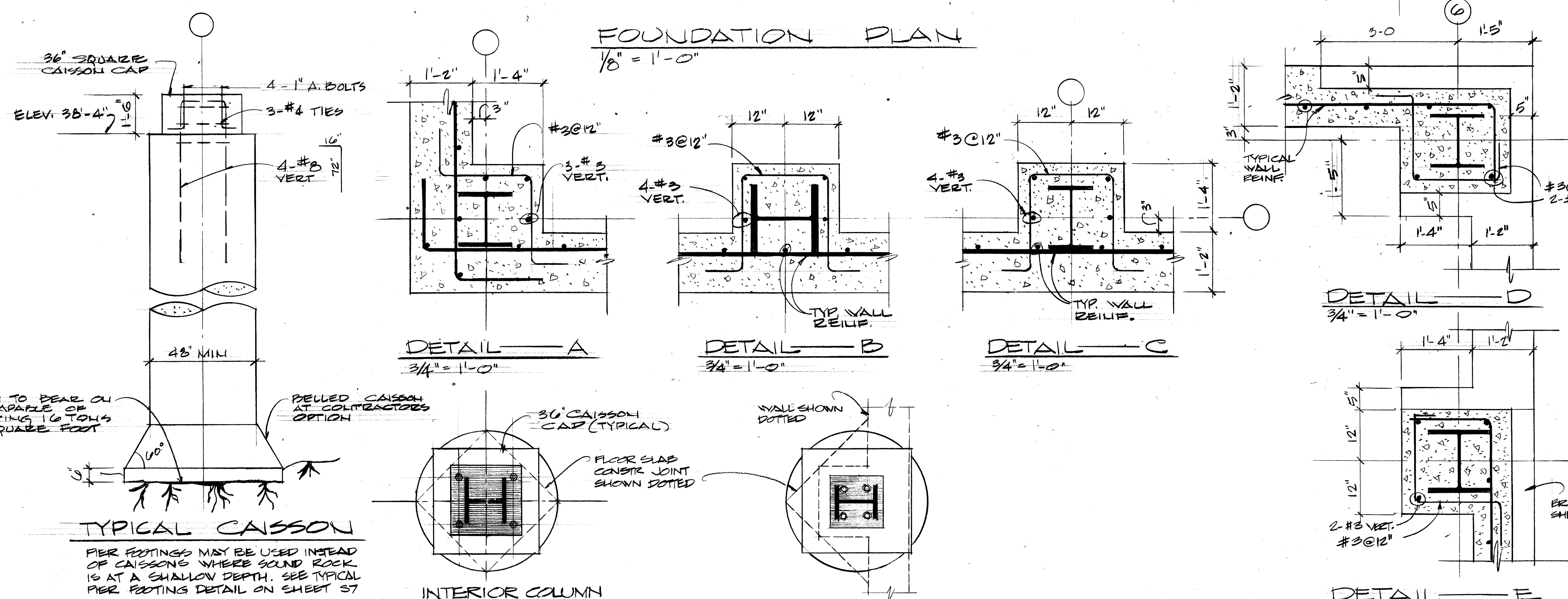
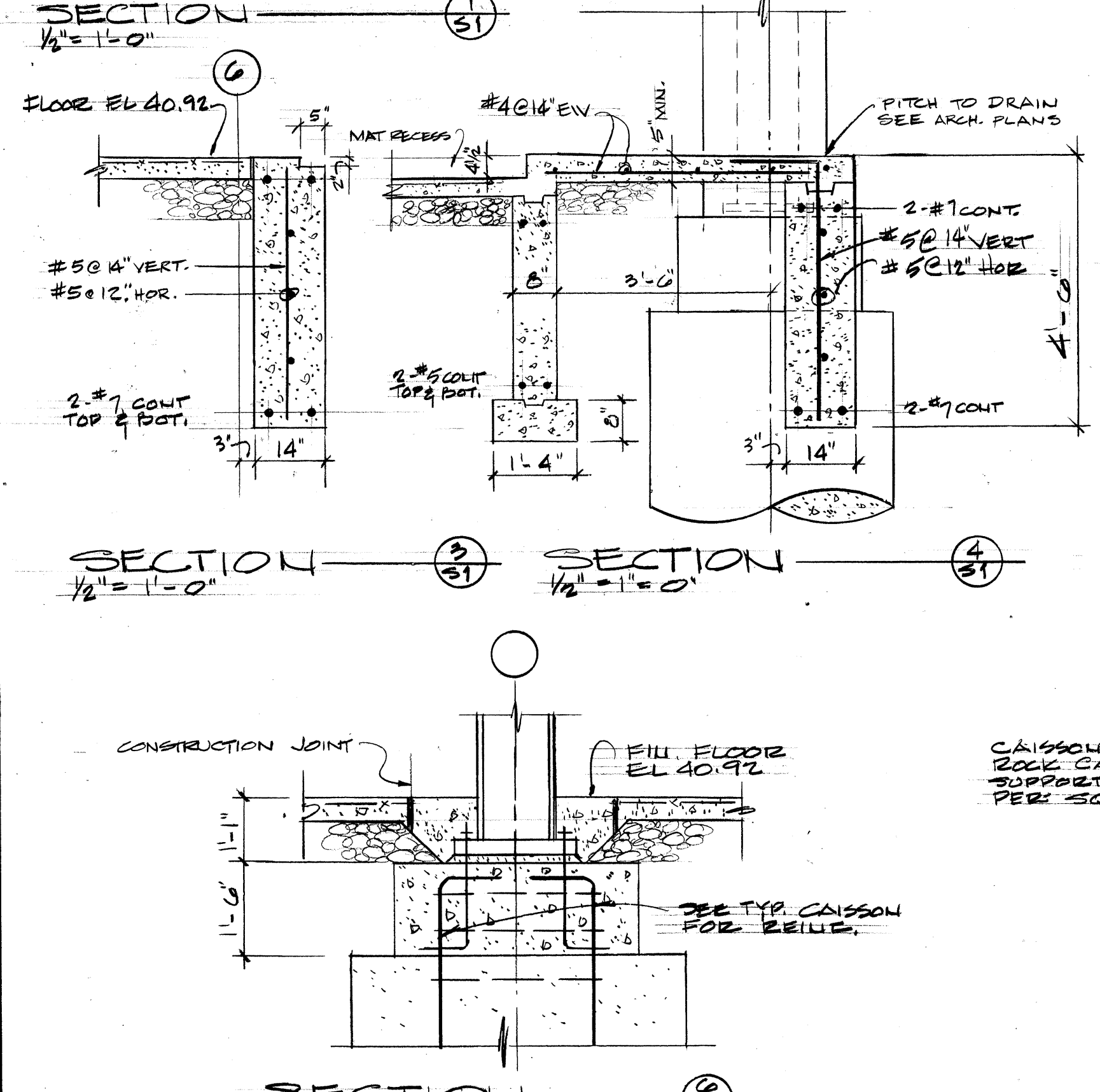
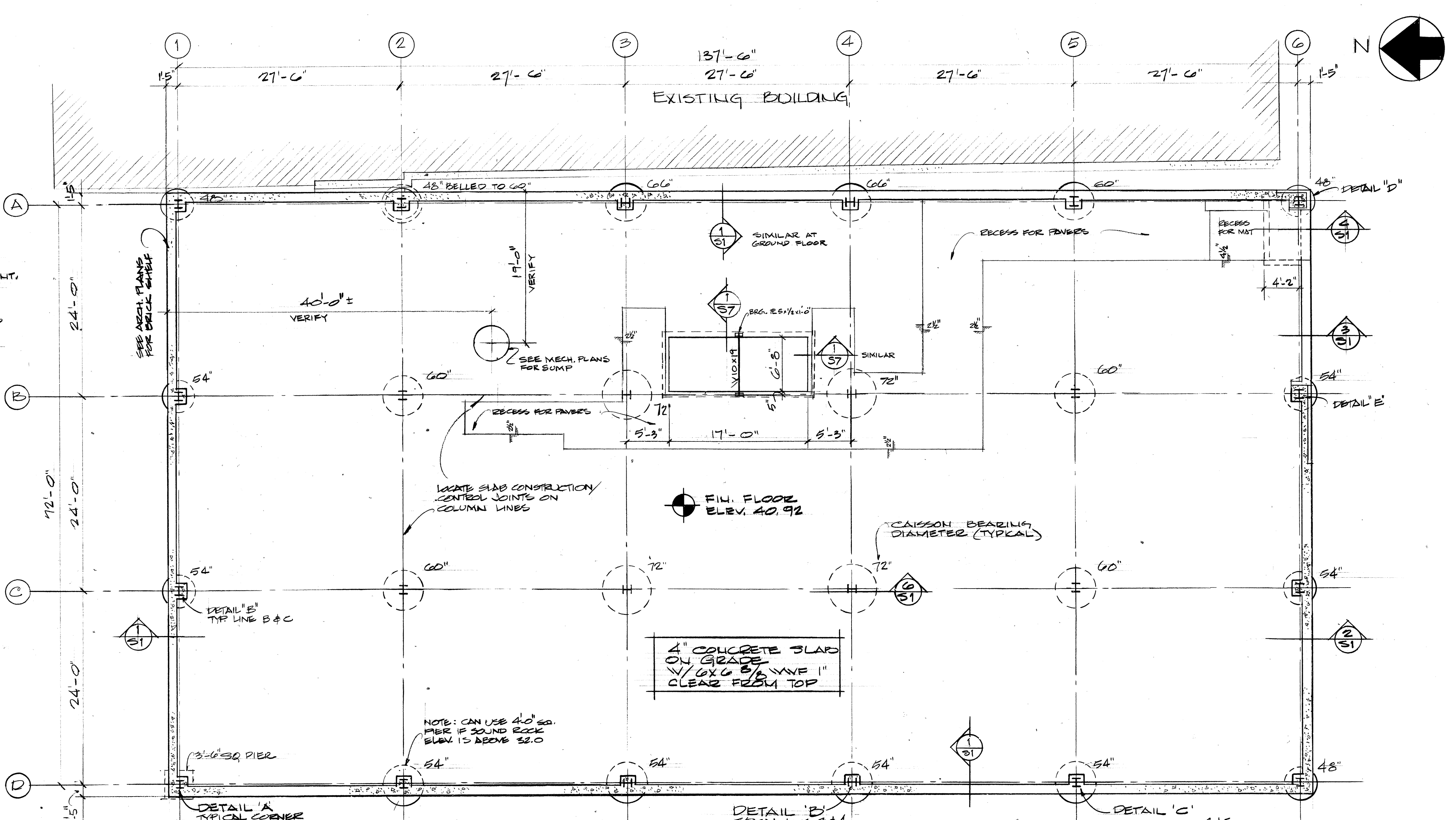
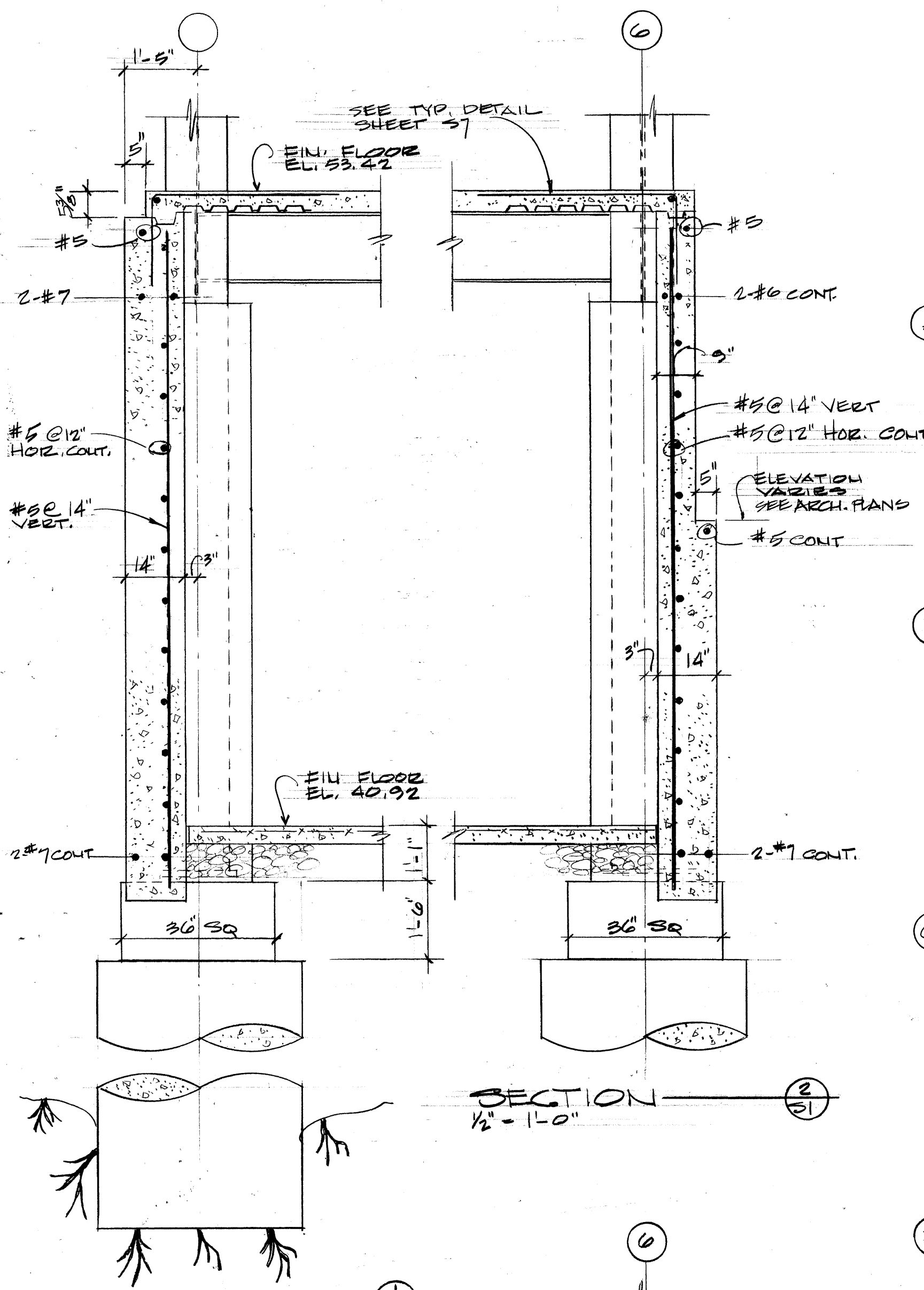
- NOTE:
1. ALL FOOTINGS TO BEAR ON SOUND ROCK CAPABLE OF SUPPORTING A SUPERIMPOSED LOAD OF 10 TONS PER SQUARE FOOT
 2. SLABS ON GRADE SHALL BE PLACED ON 8" OF COMPACTED GRAVEL ALL BURLAP & FILL MATERIAL SHALL BE REMOVED FROM BELOW SLABS AND REPLACED WITH COMPACTED FILL.



FFF
FREEMAN · FRENCH · FREEMAN
ARCHITECTS · BURLINGTON, VERMONT

CANAL PLAZA PORTLAND, MAINE	DRAWN BY LBD	PROJECT NO. 16180
SATELLITE TWO	CHECKED A.F.L.	DRAWING NO. S1
BASEMT. FLOOR & FDN. PLAN	SCALE AS SHOWN	DATE 5-7-72

2 CANAL FOUNDATION PLAN AND DETAILS



3 CANAL - FOUNDATION PLAN - DETAILS

S1

EEEF
FREEMAN · FRENCH · FREEMAN
ARCHITECTS · BURLINGTON, VERMONT

REGISTERED ARCHITECT · STATE OF VERMONT
FREDERICK A. SENTLEBER
No. 501

DURBROW ASSOCIATES
ENGINEERING CONSULTANTS
BURLINGTON · VERMONT

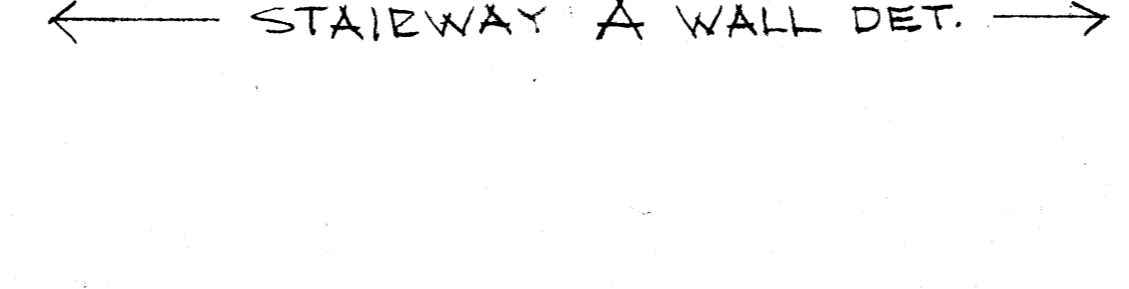
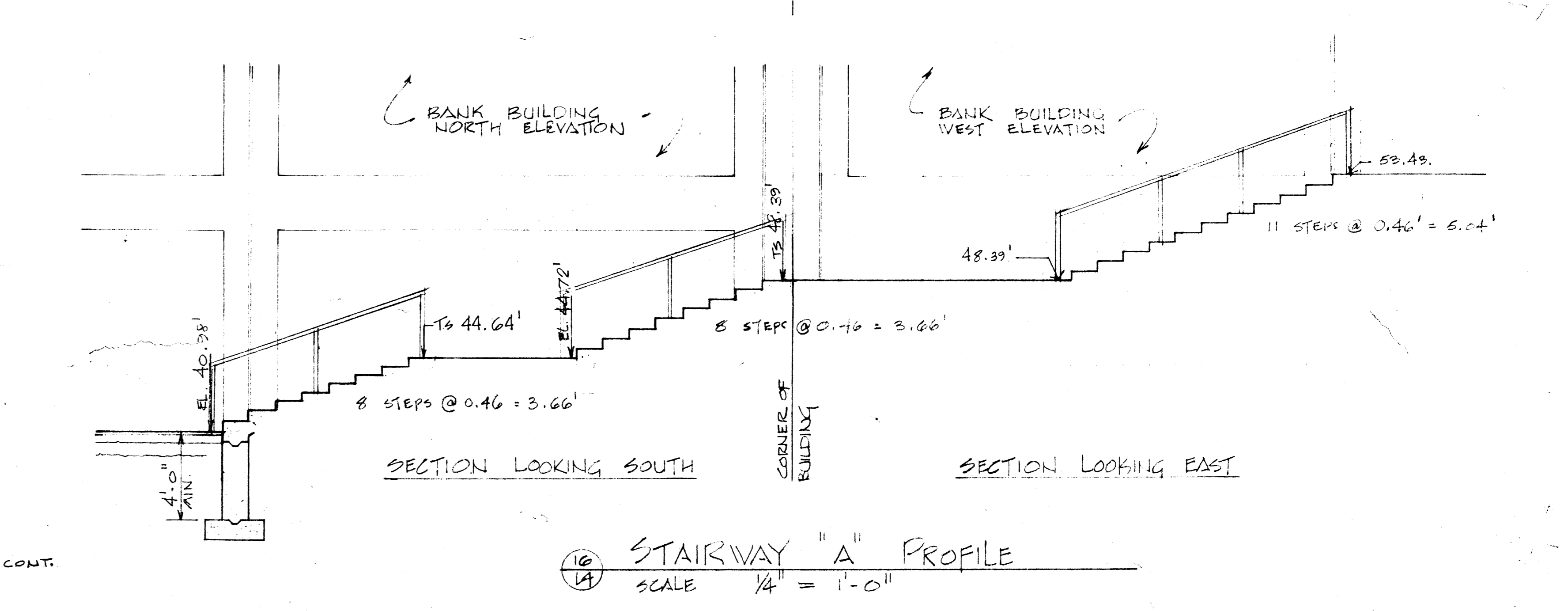
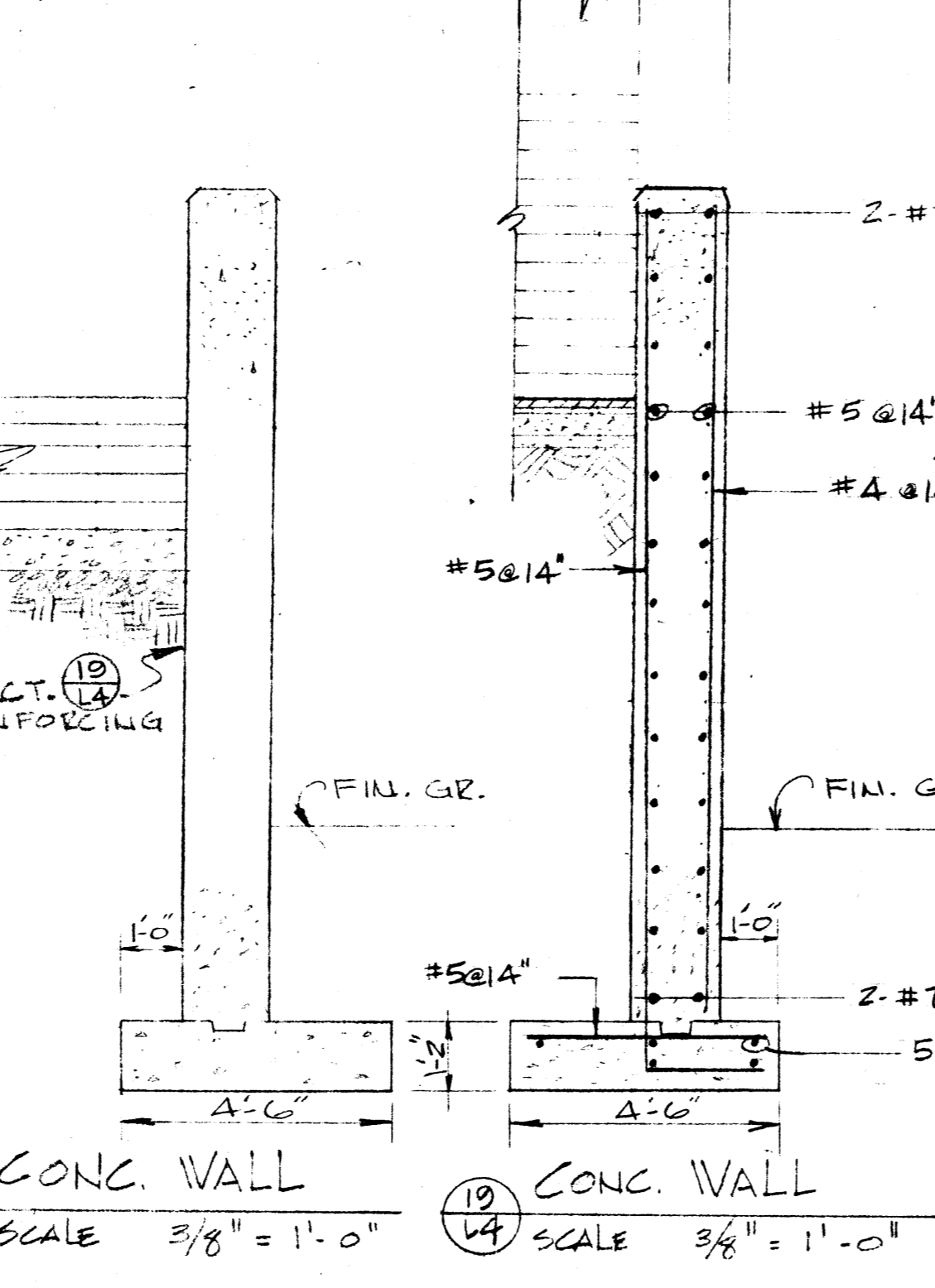
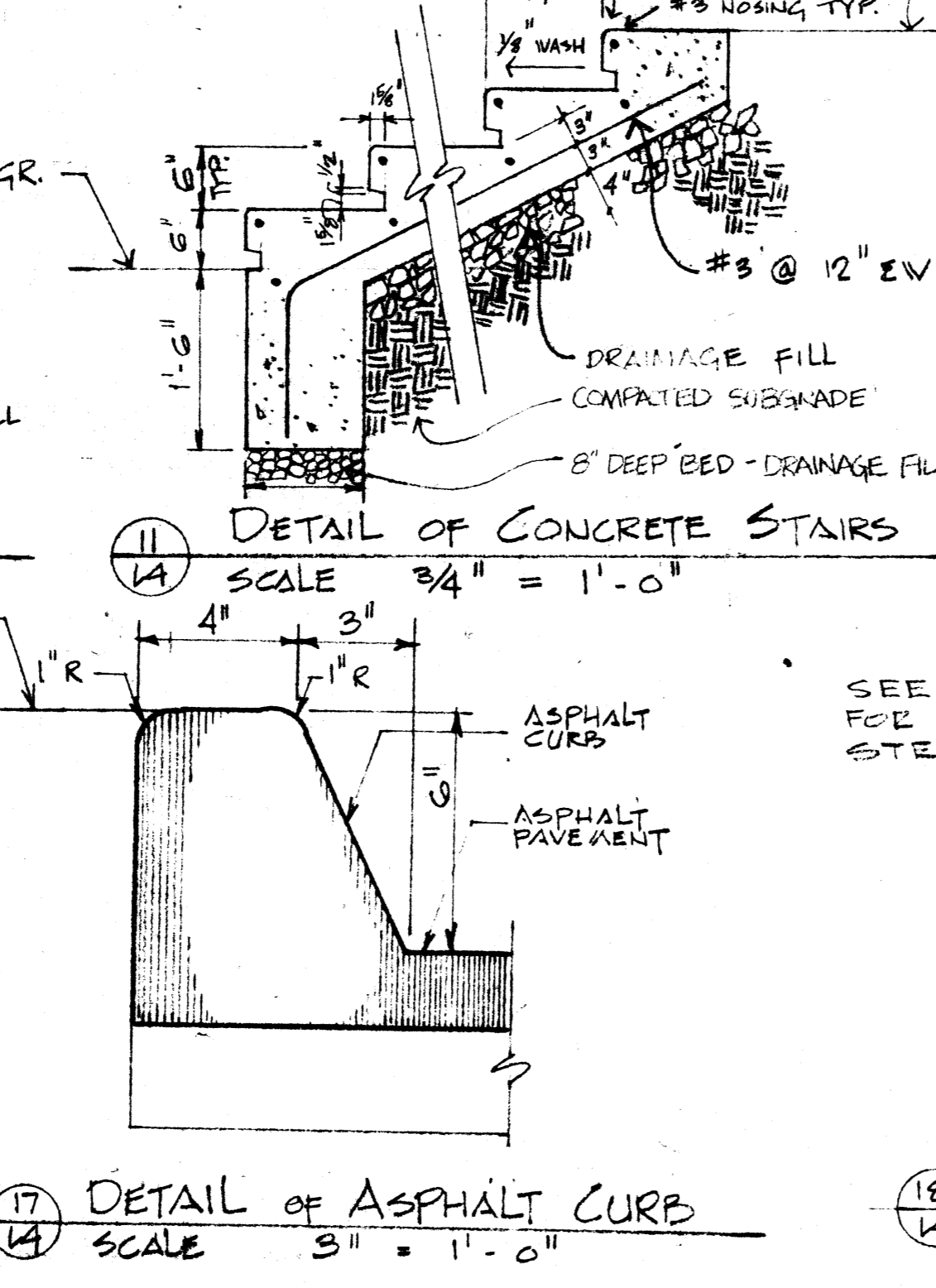
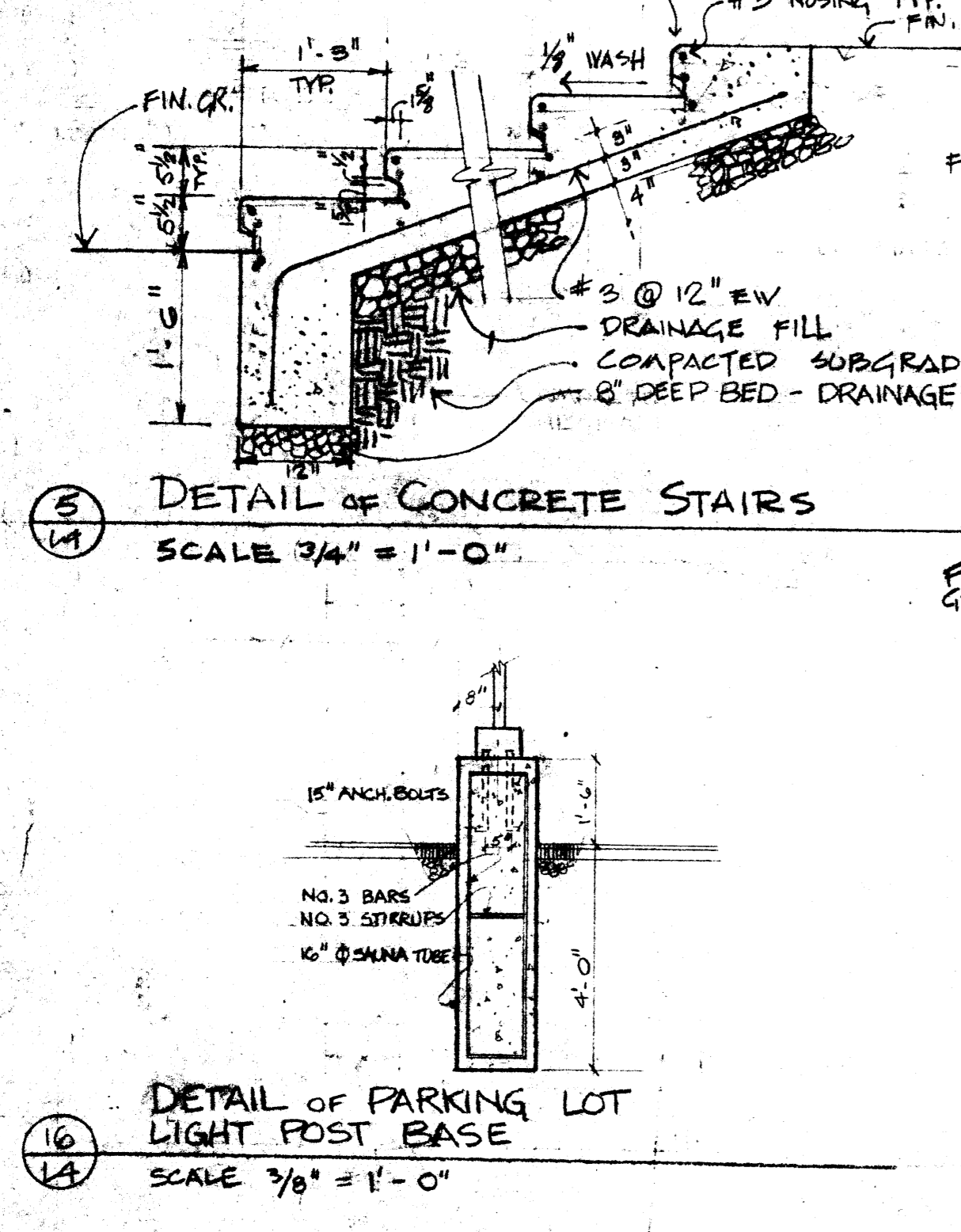
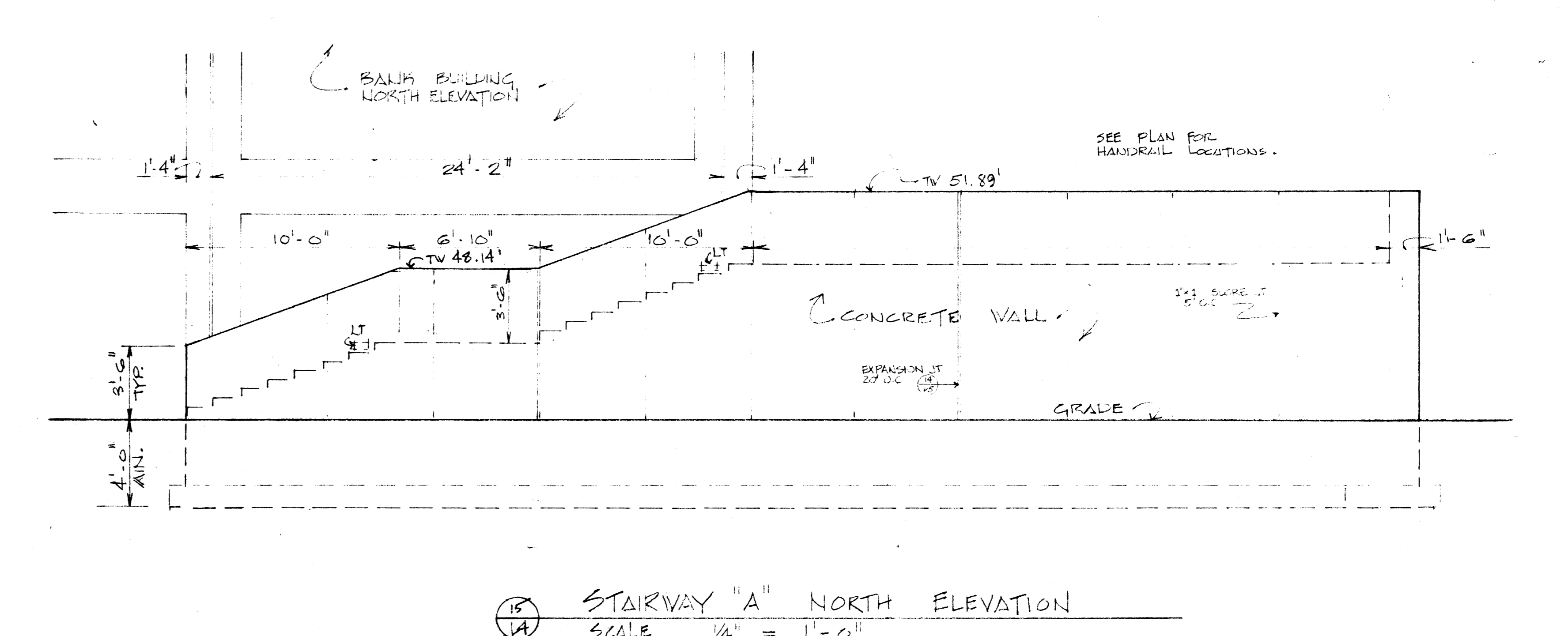
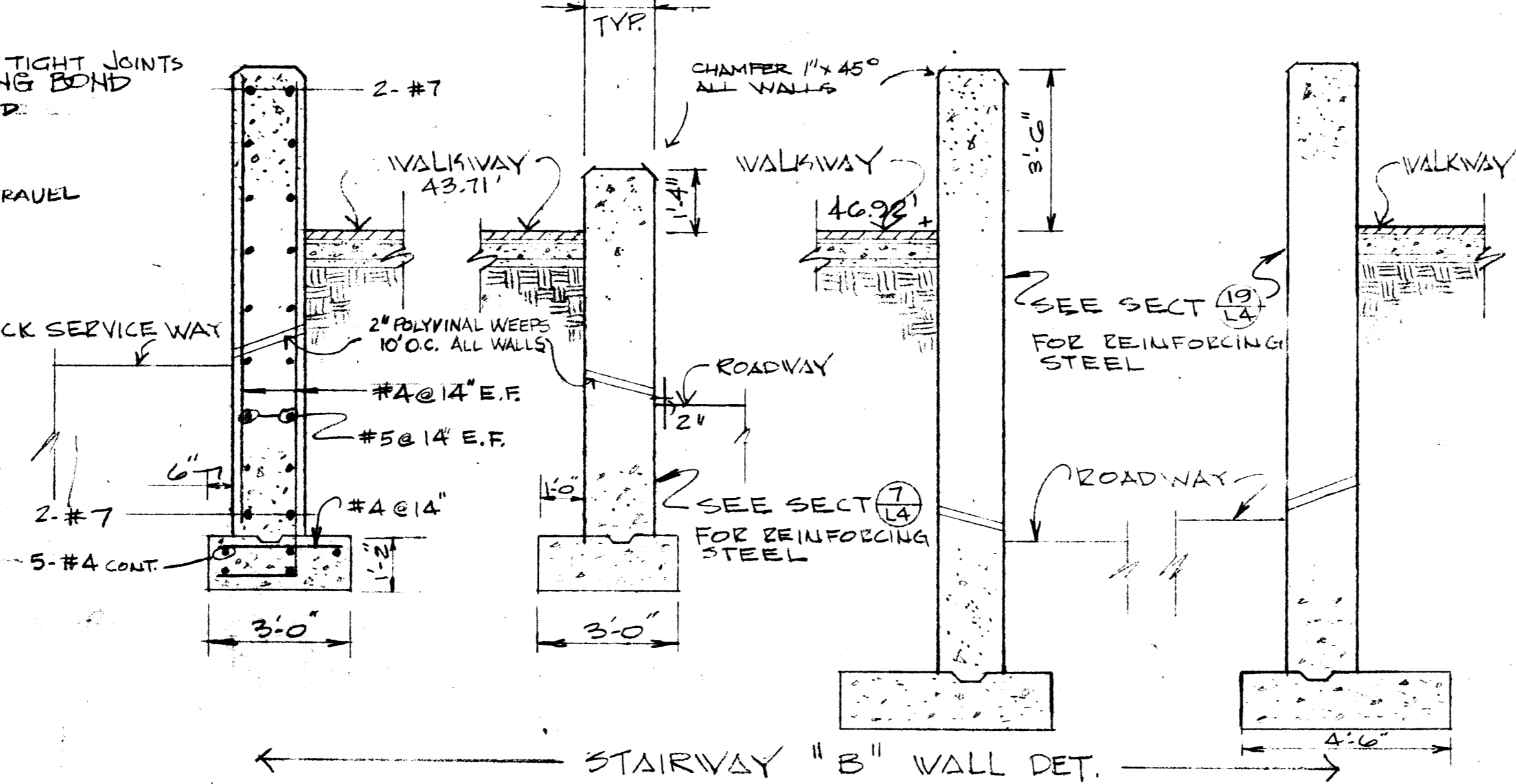
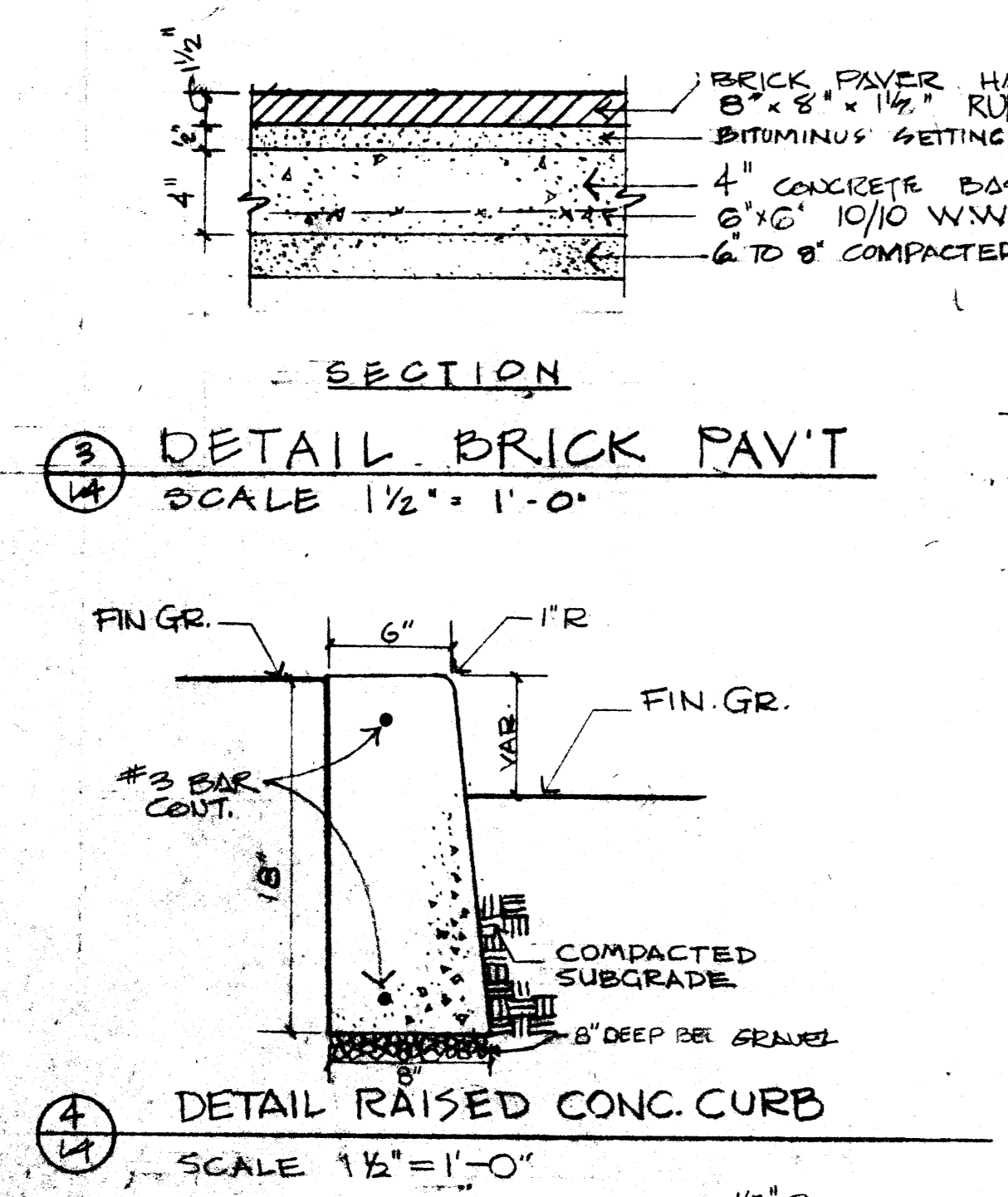
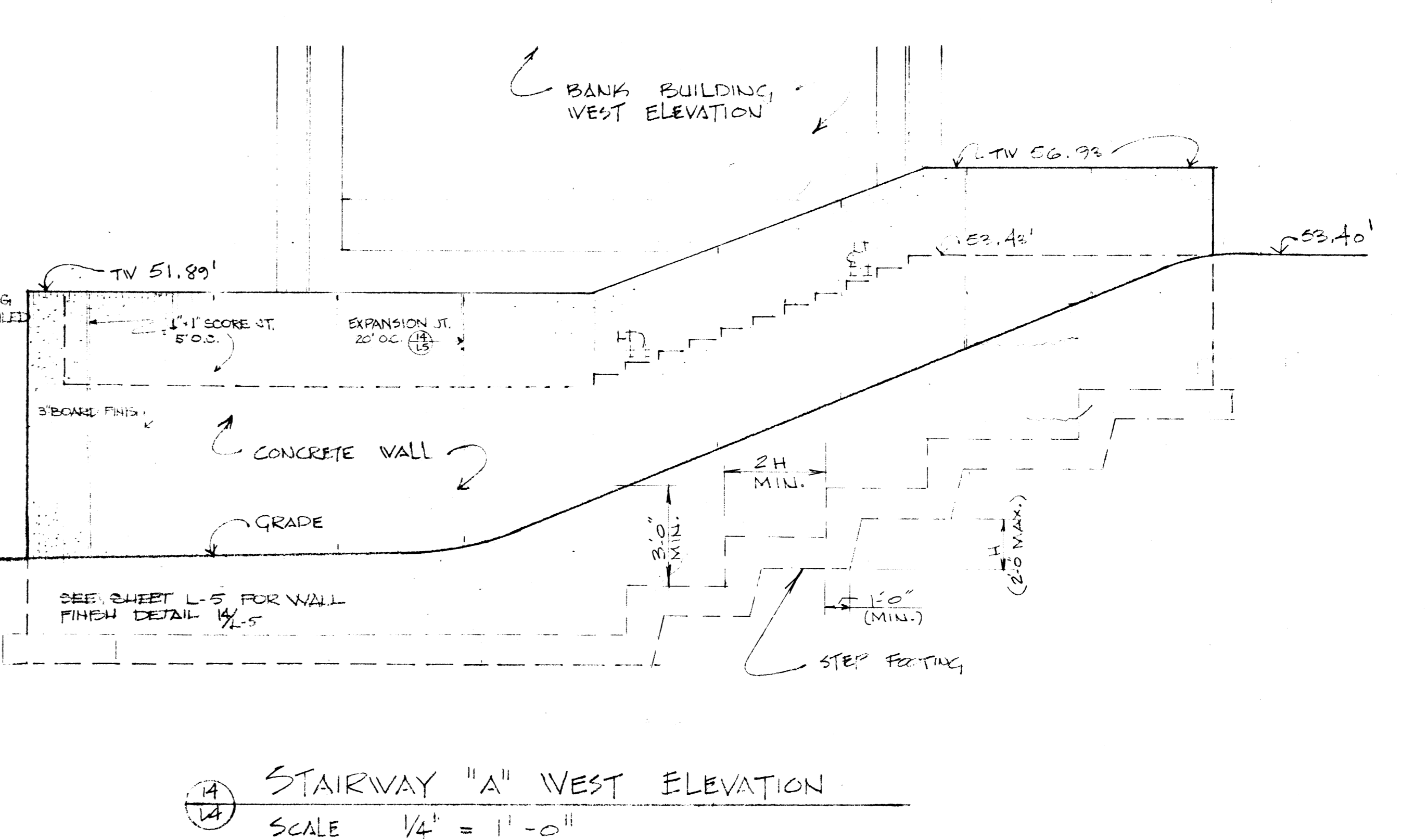
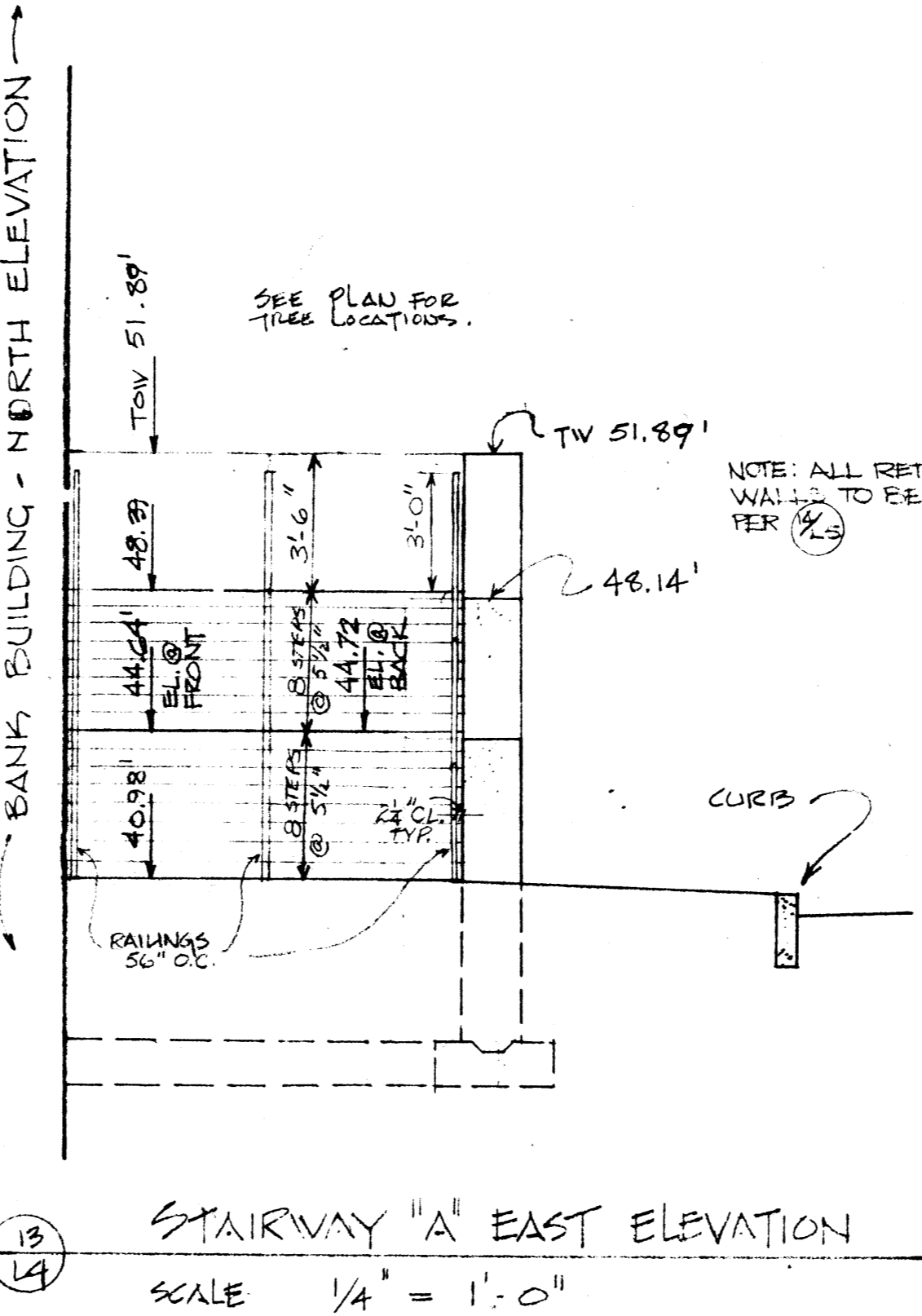
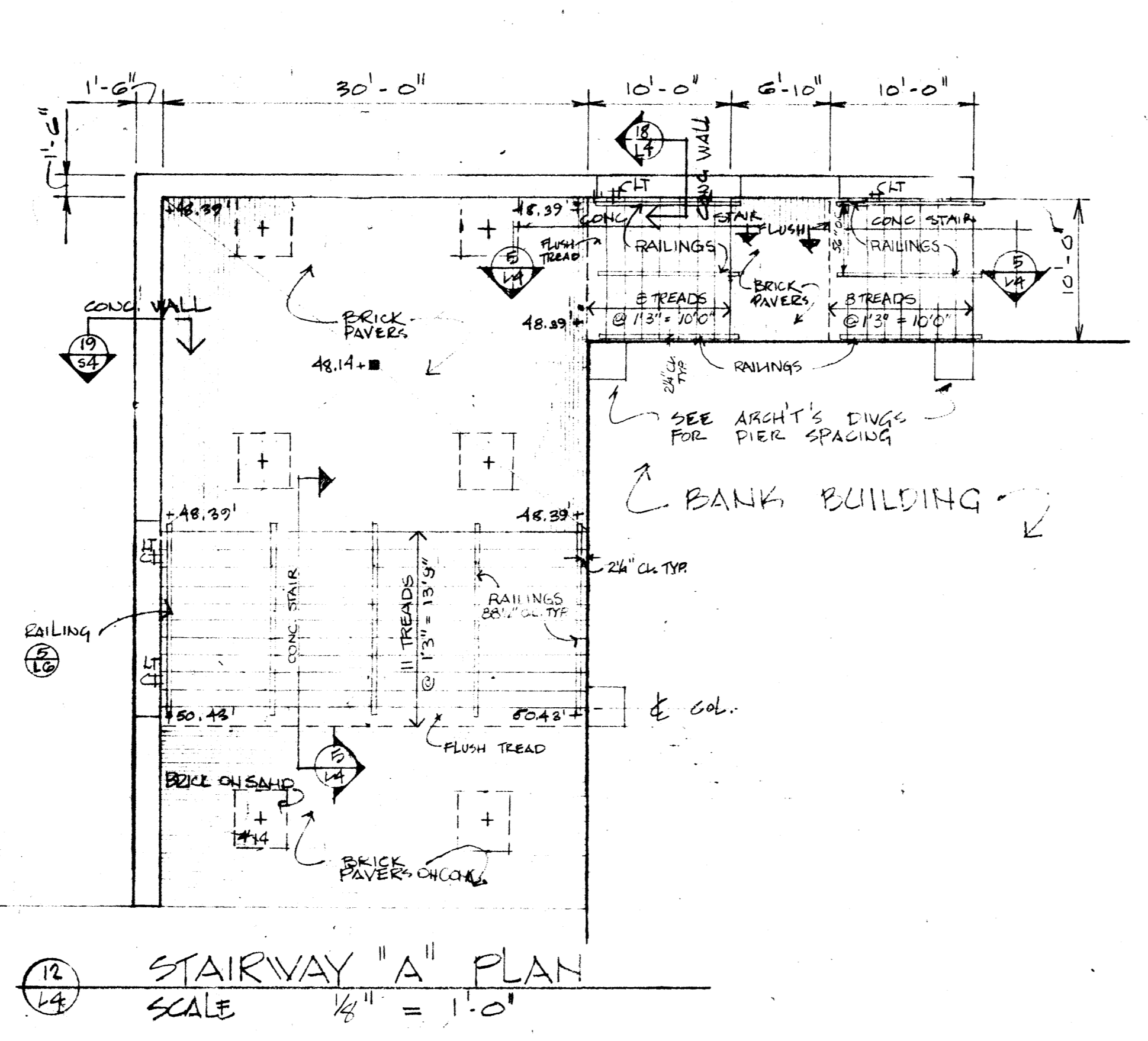
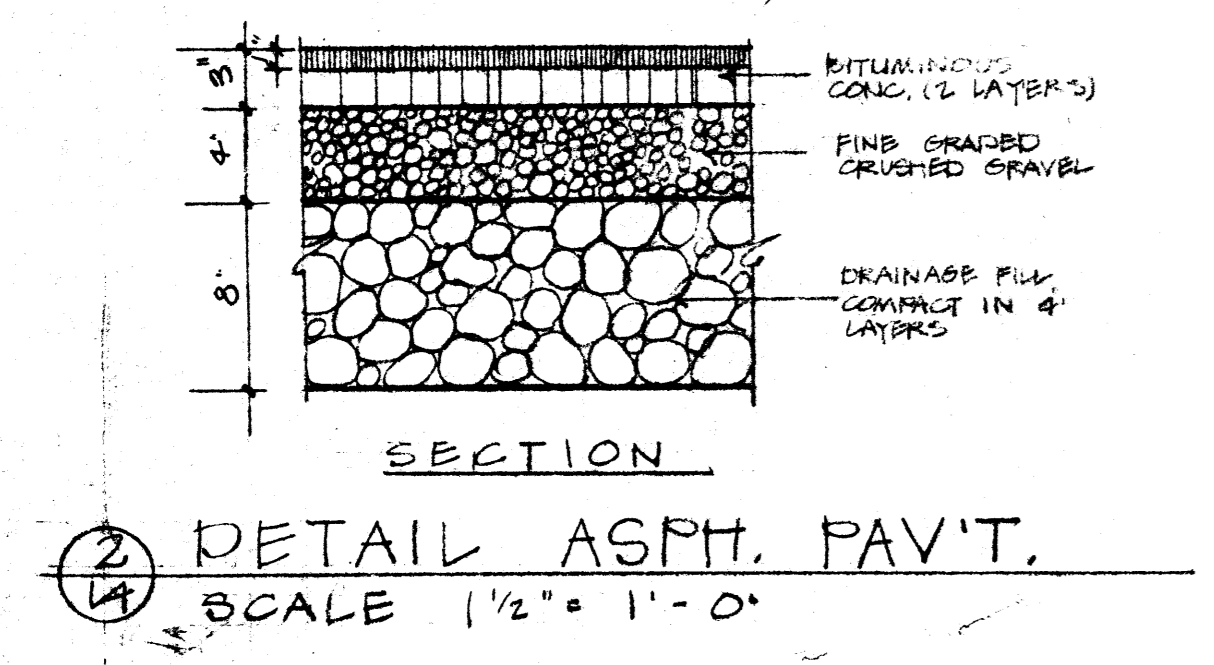
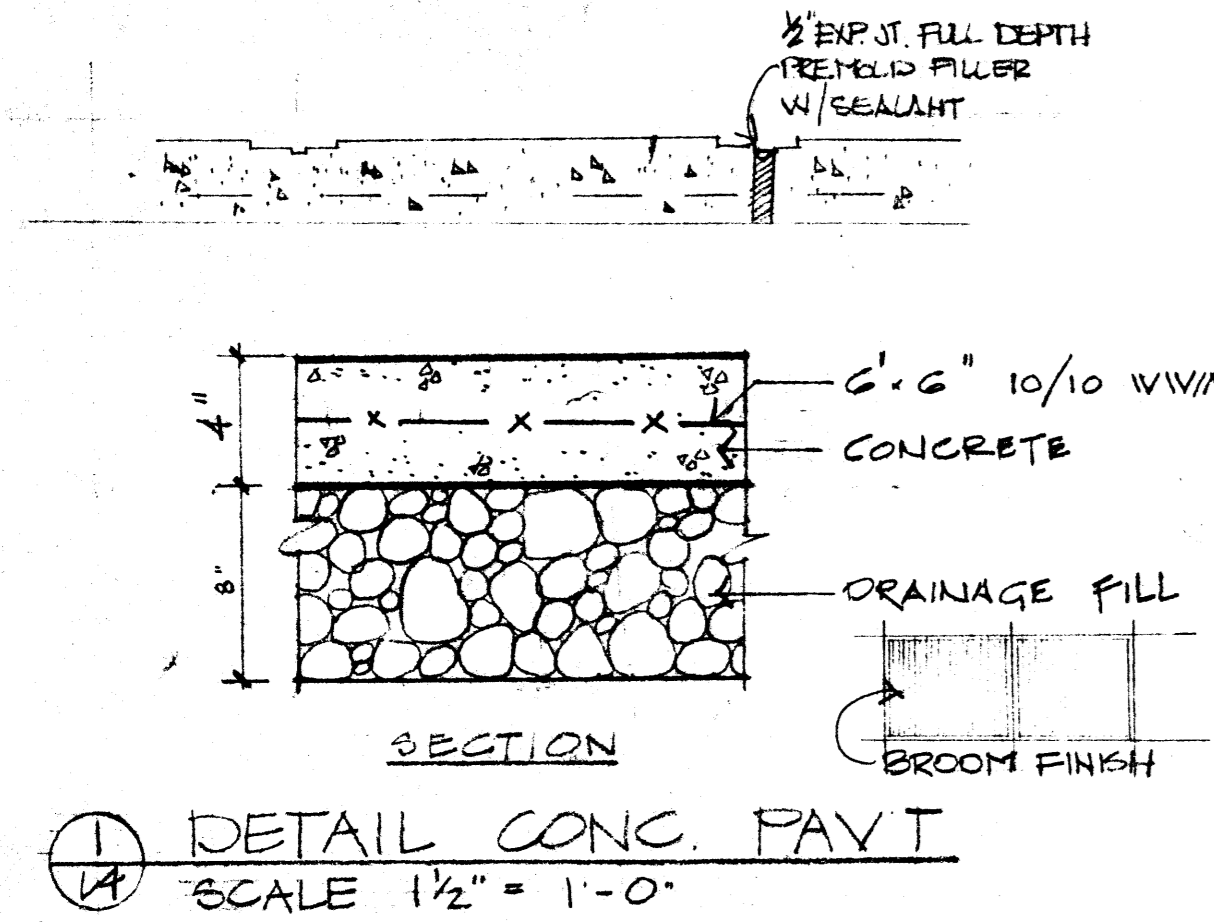
REGISTERED PROFESSIONAL ENGINEER · STATE OF MAINE
ALBERT F. LESAGE
2778
No. 1880

DATE: 8-27-79 AS NOTED
CHECKED: *al*
DRAWN: LBD
PROJECT: 1880

THREE CANALS LAZA
PORTLAND, MAINE

FOUNDATION PLAN

S1

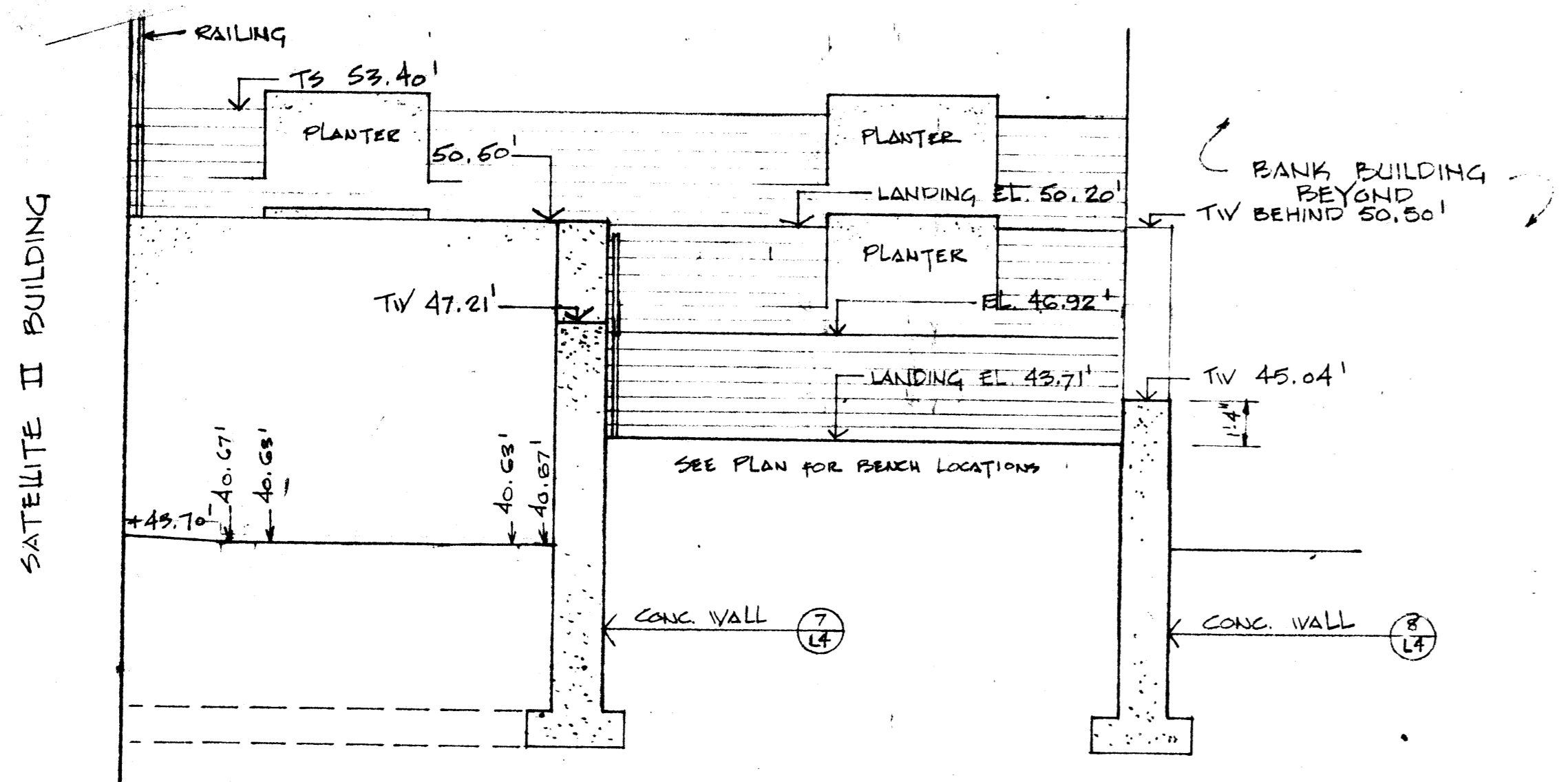


SITE STAIR SECTIONS AND DETAILS

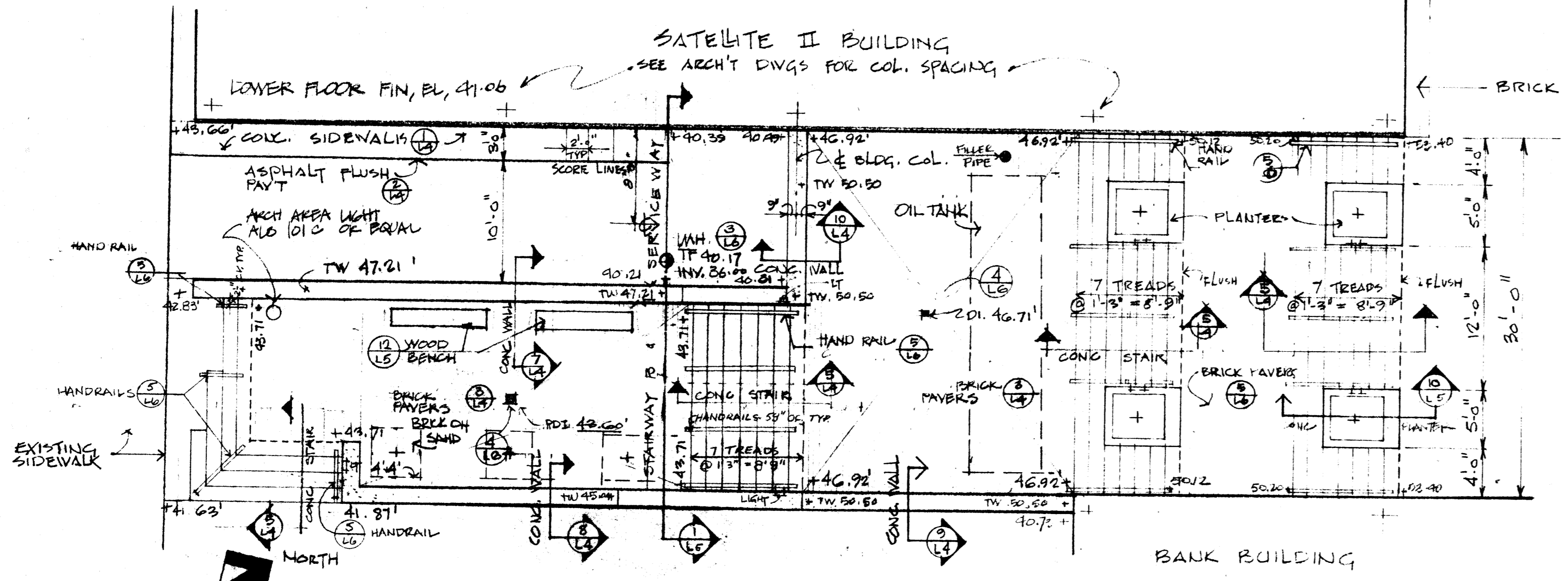
OFFICE OF TERRENCE J. BOYLE, LANDSCAPE ARCHITECTS - BURLINGTON, VT

REVISED DEC. 4, 1972

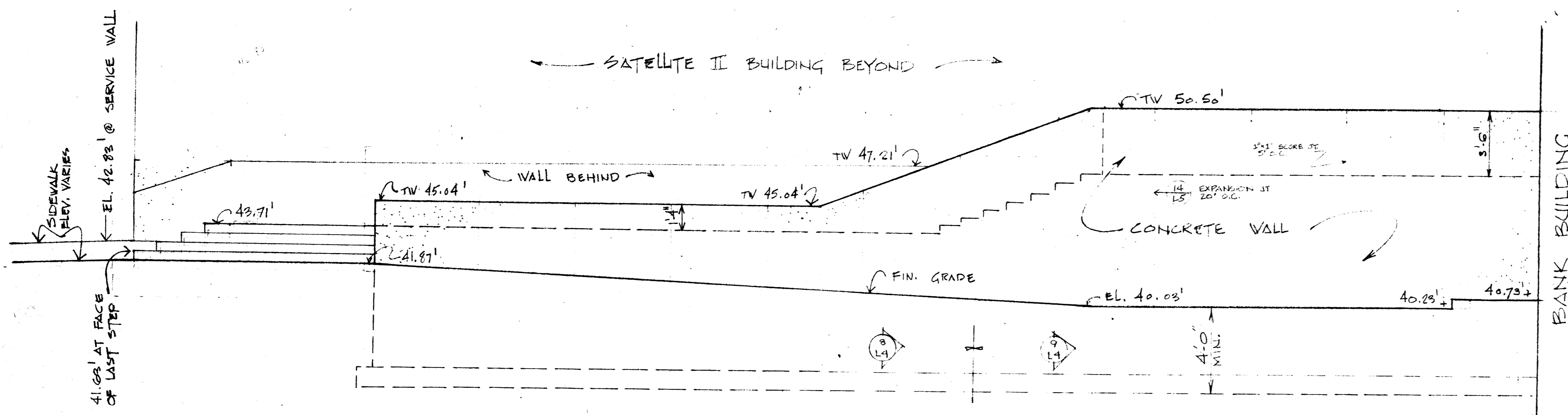
FFF FREEMAN · FRENCH · FREEMAN ARCHITECTS · BURLINGTON, VERMONT	CANAL PLAZA PORTLAND, MAINE		DRAWN BY R.D.A.	PROJECT NO. 1618
	STAIRWAYS & DETAILS		CHECKED	DRAWING NO. L4
			SCALE AS NOTED	DATE OCT. 16, 1972



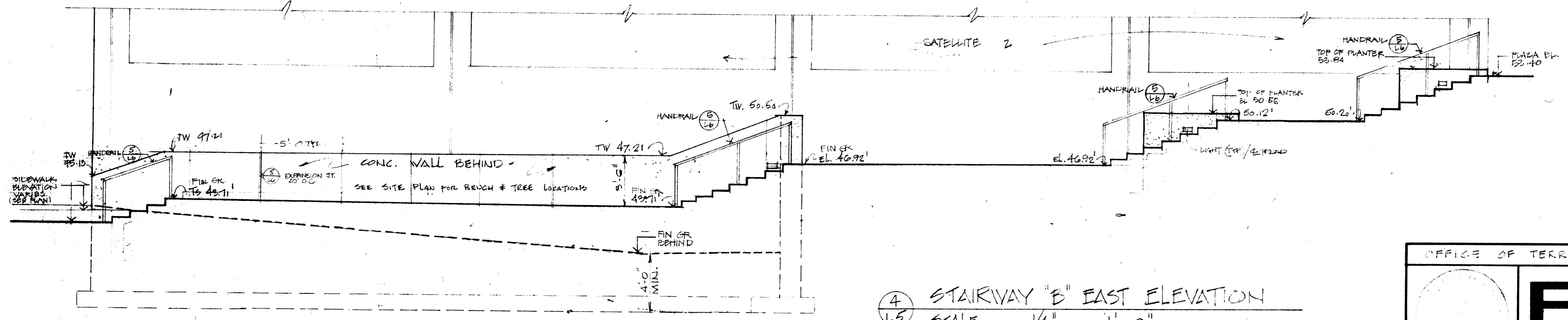
1
L5
STAIRWAY "B" SECTION
SCALE 1/4" = 1'-0"



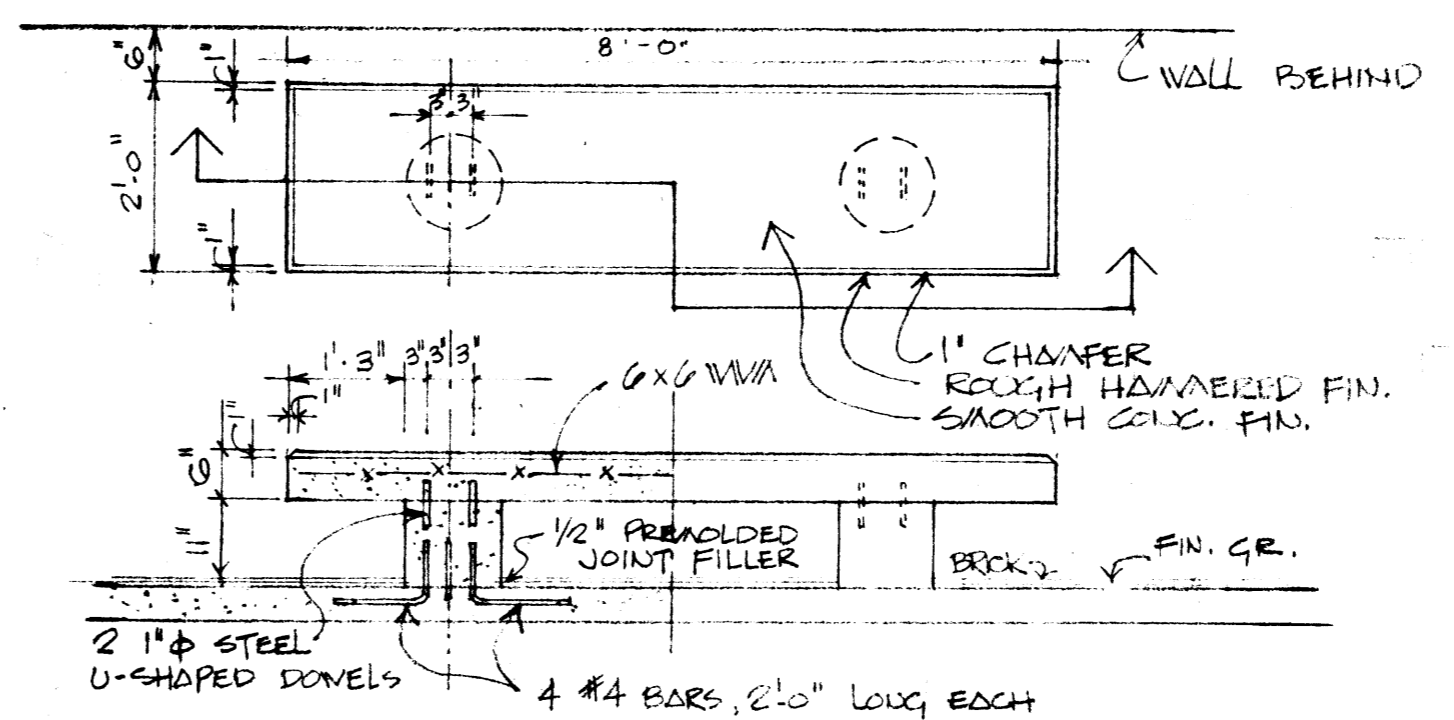
2
L5
STAIRWAY "B" PLAN
SCALE 1/8" = 1'-0"



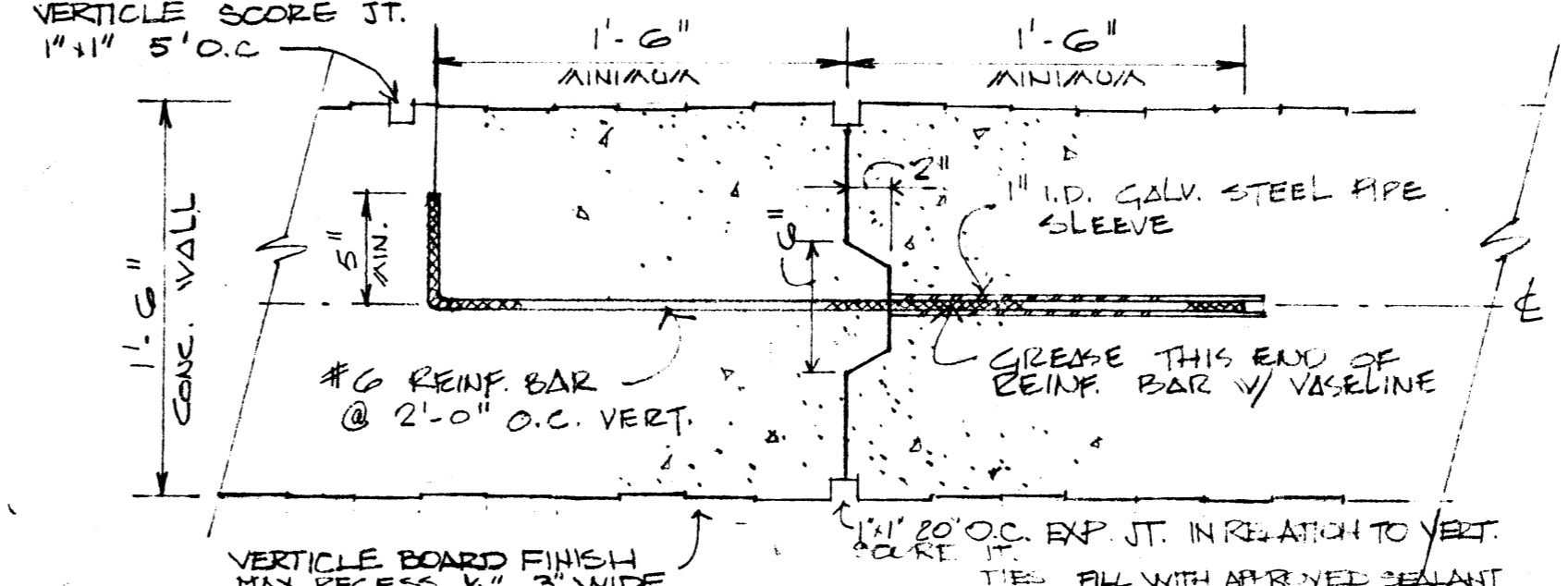
3
L5
STAIRWAY "B" EAST ELEVATION
SCALE 1/4" = 1'-0"



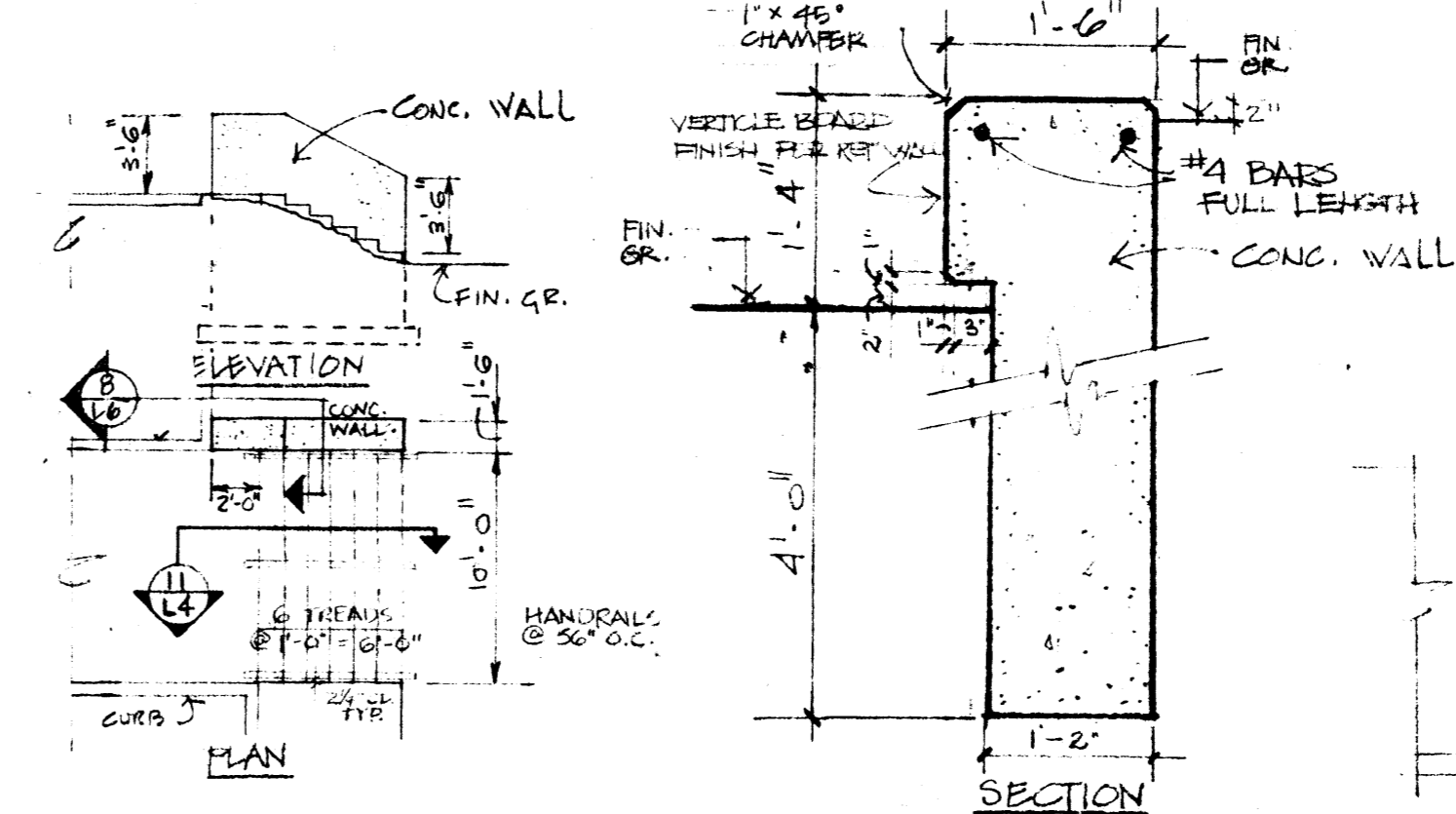
4
L5
STAIRWAY "B" EAST ELEVATION
SCALE 1/4" = 1'-0"



12
L5
BENCH DETAILS
SCALE 1/2" = 1'-0"

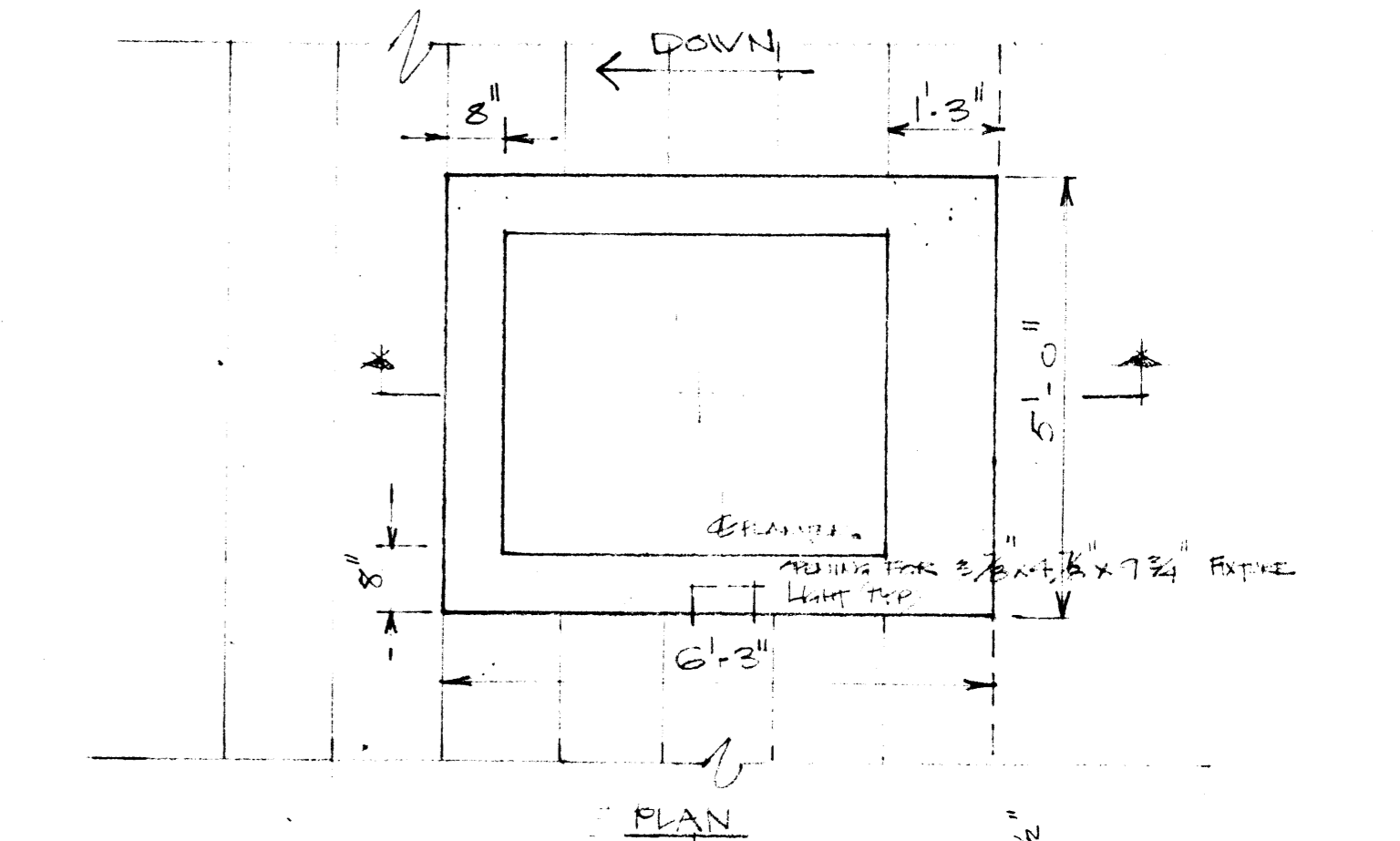


14
L5
EXPANSION JOINT IN CONC. WALL
SCALE 1/2" = 1'-0"

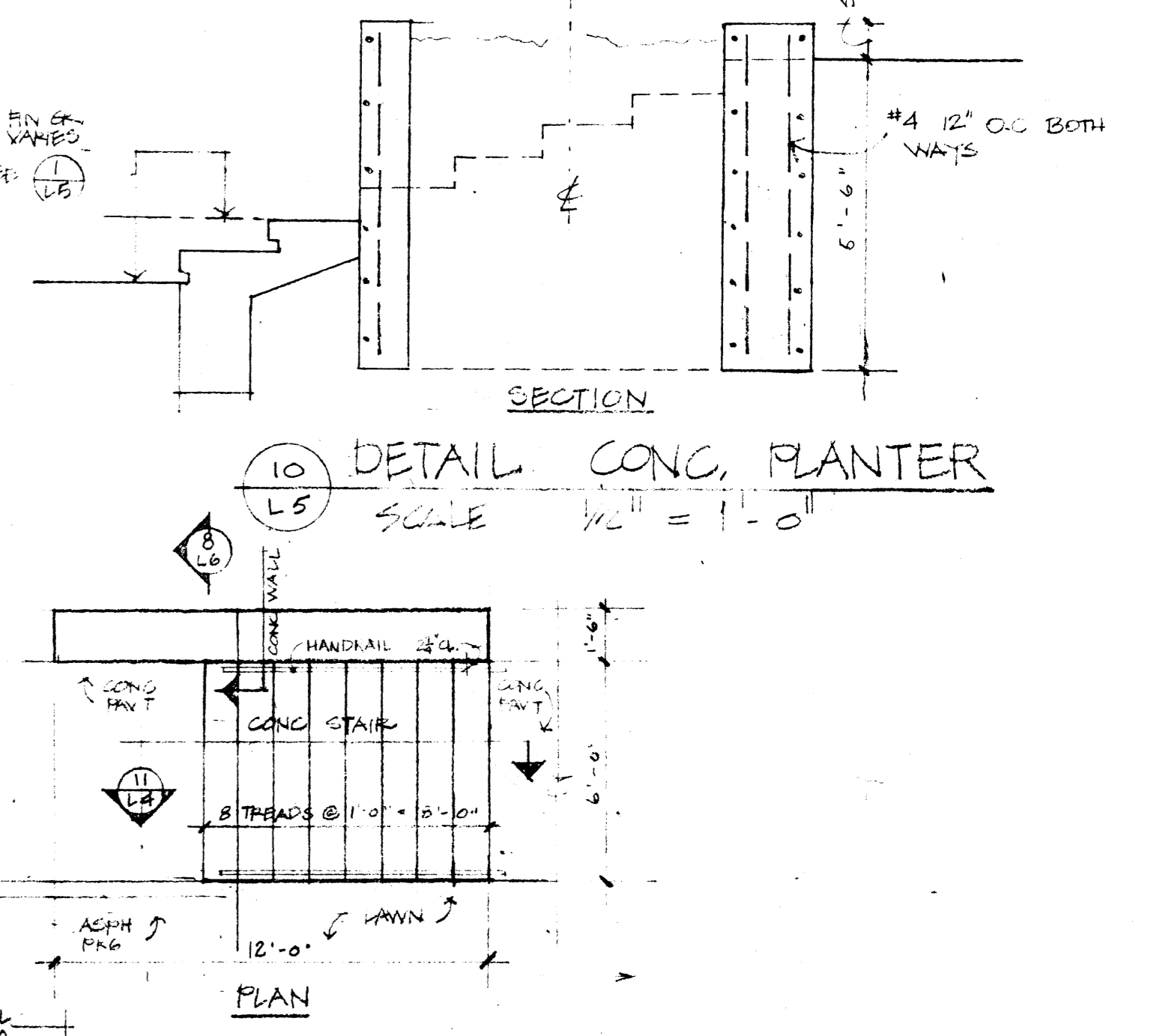


13
L5
DETAIL STAIR D
SCALE 1/8" = 1'-0"

11
L5
SEAT WALL
SCALE 3/4" = 1'-0"



10
L5
DETAIL CONC. PLANTER
SCALE 1/2" = 1'-0"



11
L5
DETAIL - STAIRWAY C
SCALE 1/4" = 1'-0"

SITE STAIR SECTIONS AND DETAILS

OFFICE OF TERRENCE J. BOYLE - LANDSCAPE ARCHITECTS - BURLINGTON, VT. REVISED DEC. 4, 1972

FFF FREEMAN · FRENCH · FREEMAN ARCHITECTS · BURLINGTON, VERMONT	CANAL PLAZA PORTLAND, MAINE		DRAWN BY R.D.M.	PROJECT NO. 1618
	STAIRWAYS & DETAILS		CHECKED	DRAWING NO. L5
			SCALE AS NOTED	DATE OCT 16, 1972