

**GAWRON TURGEON ARCHITECTS**  
 29 Black Point Road  
 Scarborough, ME 04074  
 www.gawronturgeon.com  
 Tel. 207 . 883 . 6307  
 Fax. 207 . 883 . 0361

**KeyBank**  
 Office Renovation  
 One Canal Plaza

REVISIONS		
#	DATE	DESCRIPTION

REVISIONS		
#	DATE	DESCRIPTION
1	08.29.07	PROGRESS RELEASE - RJC CONSULTING

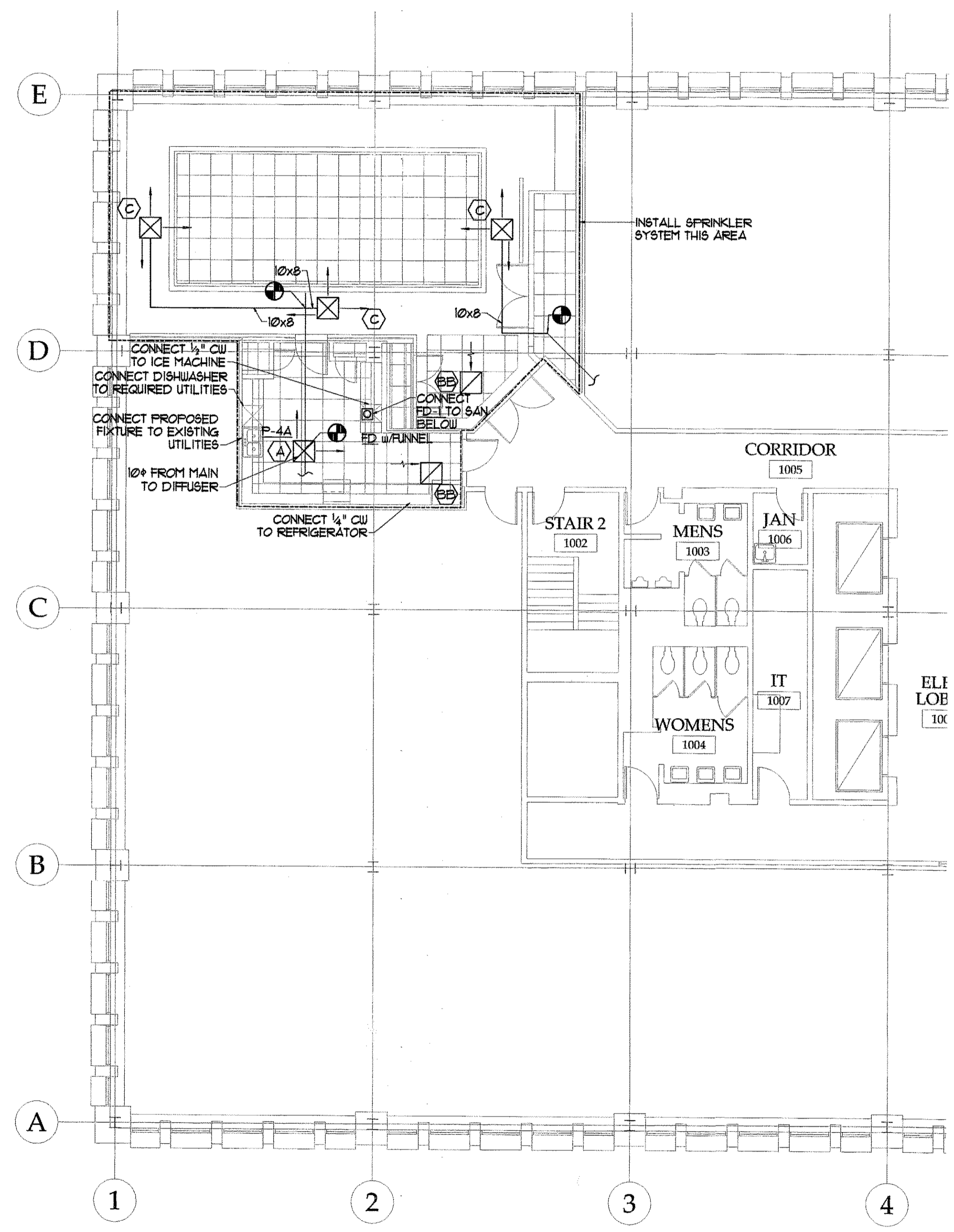
DATE:	10.22.07
PROJECT #:	020807
DRAWN BY:	JMV
CHECKED BY:	SPD:ed
DRAWING SCALE:	AS NOTED

SHEET TITLE  
 CANAL PLAZA  
 FIRST FLOOR &  
 TENTH FLOOR PARTIAL  
 MECHANICAL PLAN

**M201**

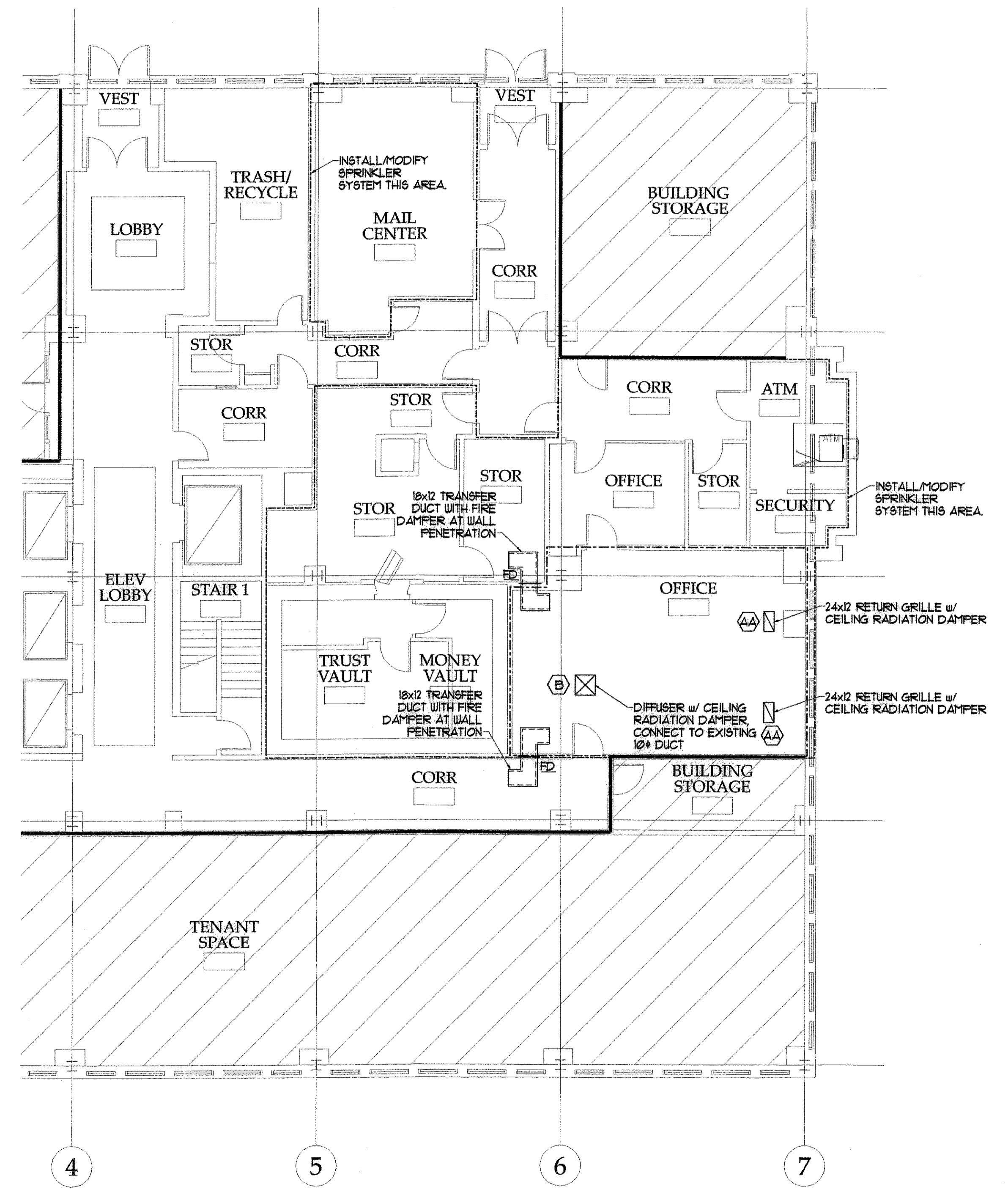
© COPYRIGHT 1985-2006  
 REPRODUCTION OR USE OF THIS  
 DOCUMENT WITHOUT WRITTEN  
 PERMISSION OF GAWRON TURGEON  
 ARCHITECTS IS PROHIBITED.

**NOTES -**  
 1. Fabricate and install metal splice covers for perimeter HVAC discharge plenums at windows at all areas where existing partitions are indicated to be removed. Anchor securely to existing perimeter enclosure. Match thickness and profile of existing splices.  
 2. Cut existing perimeter HVAC discharge plenums at windows at all areas where partition walls are being added. Install sheetmetal end where plenum meets proposed wall and seal airtight.



**TENTH FLOOR MECHANICAL PLAN**  
 SCALE - 1/8" = 1' - 0"

**NOTES -**  
 1. Fabricate and install metal splice covers for perimeter HVAC discharge plenums at windows at all areas where existing partitions are indicated to be removed. Anchor securely to existing perimeter enclosure. Match thickness and profile of existing splices.  
 2. Cut existing perimeter HVAC discharge plenums at windows at all areas where partition walls are being added. Install sheetmetal end where plenum meets proposed wall and seal airtight.



**FIRST FLOOR MECHANICAL PLAN**  
 SCALE - 1/8" = 1' - 0"

Q  
P  
O  
N  
M  
L  
K  
J  
I  
H  
G  
F  
E  
D  
C  
B  
A

1 2 3 4 5 6 7 8 9 10 11 12 13 14 15 16 17 18 19 20