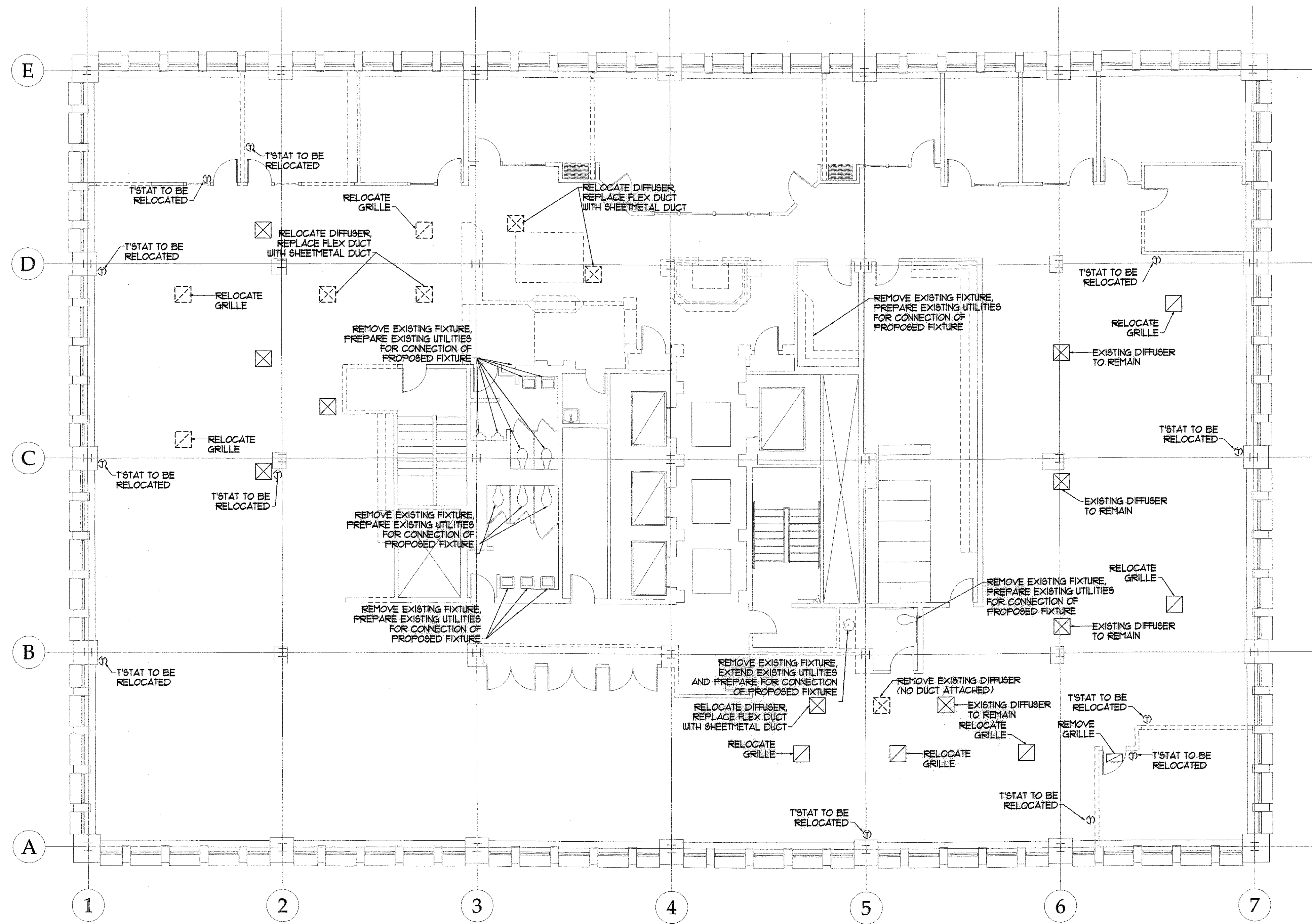


**GAWRON  
TURGEON  
ARCHITECTS**  
29 Black Point Road  
Scarborough, ME 04074  
www.gawronturgeon.com  
Tel. 207 . 883 . 6307  
Fax. 207 . 883 . 0361

**KeyBank**  
Office Renovation  
One Canal Plaza



**FOURTH FLOOR MECHANICAL PLAN**

SCALE - 1/8" = 1' - 0"

**NOTES -**

1. Fabricate and install metal splice covers for perimeter HVAC discharge plenums at windows at all areas where existing partitions are indicated to be removed. Anchor securely to existing perimeter enclosure. Match thickness and profile of existing splices.
2. Cut existing perimeter HVAC discharge plenums at windows at all areas where partition walls are being added. Install sheetmetal end wall plenum nests proposed wall and seal airtight.

**REVISIONS**

#	DATE	DESCRIPTION

**REVISIONS**

#	DATE	DESCRIPTION
1	08.29.07	PROGRESS RELEASE - RJC CONSULTING

DATE: 10.22.07

PROJECT #: 020807

DRAWN BY: JMV

CHECKED BY: SPDoel

DRAWING SCALE: AS NOTED

**SHEET TITLE**

CANAL PLAZA  
FOURTH FLOOR  
MECHANICAL  
DEMOLITION PLAN

**M103**

© COPYRIGHT 1985-2006  
REPRODUCED OR BASED ON THIS  
DOCUMENT WITHOUT WRITTEN  
PERMISSION OF GAWRON TURGEON  
ARCHITECTS IS PROHIBITED.