

**GAWRON
TURGEON
ARCHITECTS**
29 Black Point Road
Scarborough, ME 04074
www.gawronturgeon.com
Tel. 207 . 883 . 6307
Fax. 207 . 883 . 0361

KeyBank
Office Renovation
One Canal Plaza

REVISIONS

#	DATE	DESCRIPTION

REVISIONS

#	DATE	DESCRIPTION
1	08.29.07	PROCESS RELEASE - RJC CONSULTING

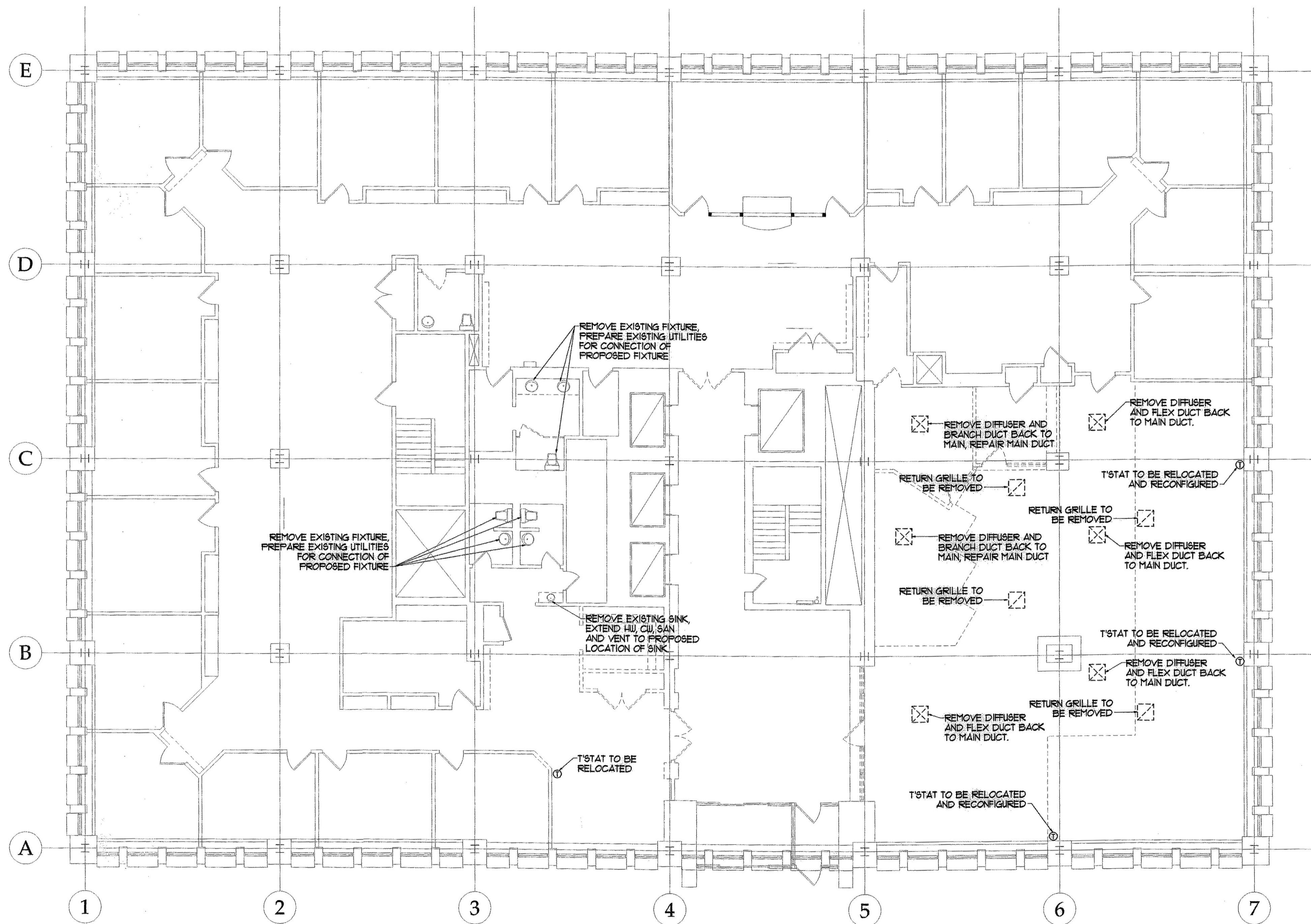
DATE:	10.22.07
PROJECT #:	020807
DRAWN BY:	JMV
CHECKED BY:	SPDoel
DRAWING SCALE:	AS NOTED

SHEET TITLE

CANAL PLAZA
SECOND FLOOR
MECHANICAL
DEMOLITION PLAN

M102

© COPYRIGHT 1985-2006
REPRODUCTION OR USE OF THIS
DOCUMENT WITHOUT WRITTEN
PERMISSION OF GAWRON
ARCHITECTS IS PROHIBITED.



SECOND FLOOR MECHANICAL DEMOLITION PLAN
SCALE - 1/8" = 1' - 0"

NOTES -

- Fabricate and install metal splice covers for perimeter HVAC discharge plenums at windows at all areas where existing partitions are indicated to be removed. Anchor securely to existing perimeter enclosure. Match thickness and profile of existing splices.
- Cut existing perimeter HVAC discharge plenums at windows at all areas where partition walls are being added. Install sheetmetal end wall plenum meets proposed wall and seal airtight.

R
Q
P
O
N
M
L
K
J
H
G
F
E
D
C
B
A

1 2 3 4 5 6 7

1 2 3 4 5 6 7 8 9 10 11 12 13 14 15 16 17 18 19 20