

**GAWRON
TURGEON
ARCHITECTS**
29 Black Point Road
Scarborough, ME 04074
www.gawronturgeon.com
Tel. 207.883.6307
Fax. 207.883.0361

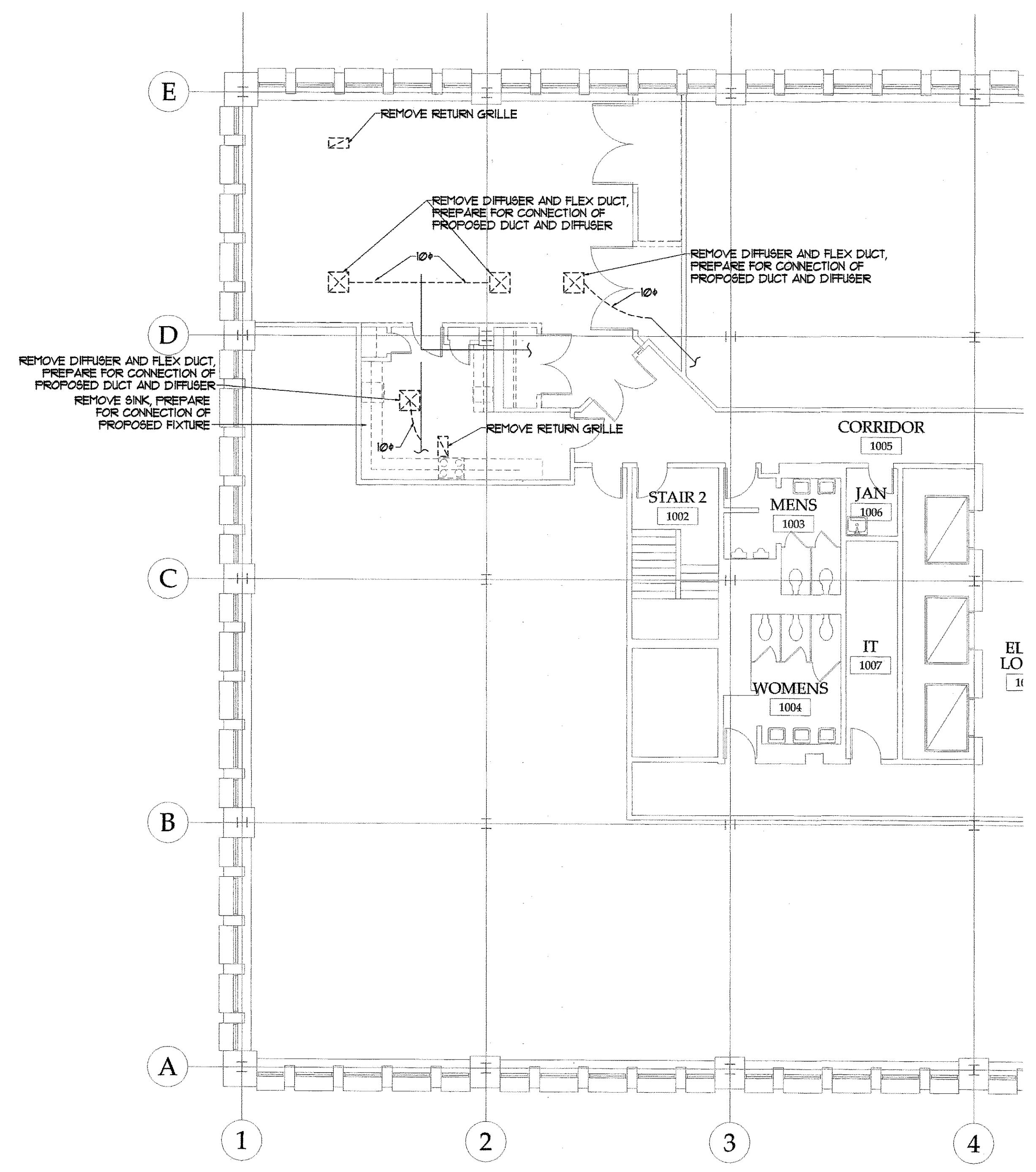
KeyBank
Office Renovation
One Canal Plaza

REVISIONS		
#	DATE	DESCRIPTION
REVISIONS		
#	DATE	DESCRIPTION
1	08.29.07	PROGRESS RELEASE - RJC CONSULTING

DATE:	10.22.07
PROJECT #:	020807
DRAWN BY:	JMV
CHECKED BY:	SPDoel
DRAWING SCALE:	AS NOTED

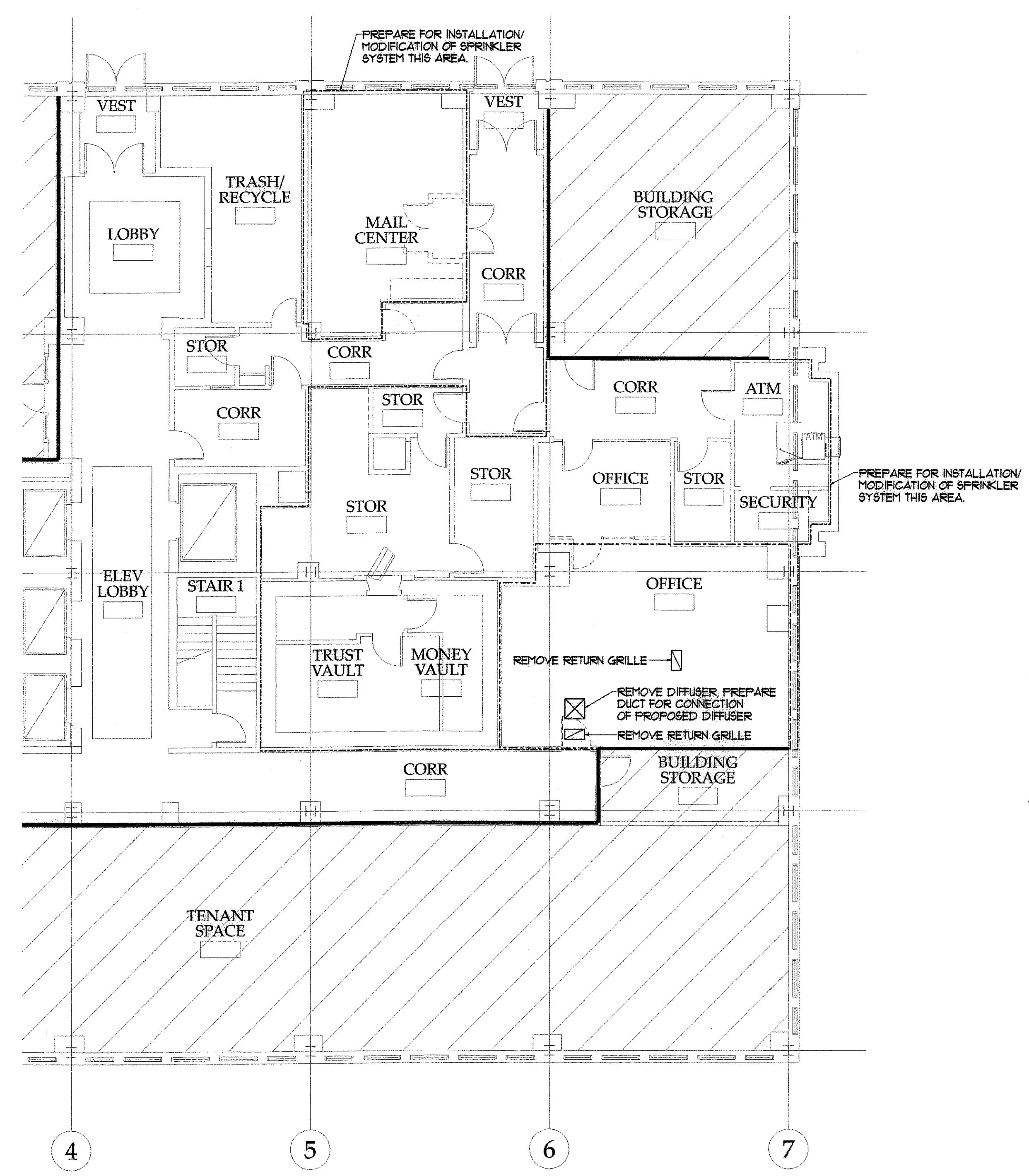
SHEET TITLE
CANAL PLAZA
FIRST FLOOR &
TENTH FLOOR
PARTIAL MECHANICAL
DEMOLITION PLANS

M101



TENTH FLOOR MECHANICAL DEMOLITION PLAN
SCALE - 1/8" = 1' - 0"

NOTES -
1. Fabricate and install metal splice covers for perimeter HVAC discharge plenums at windows at all areas where existing partitions are indicated to be removed. Anchor securely to existing perimeter enclosure. Match thickness and profile of existing splices.
2. Cut existing perimeter HVAC discharge plenums at windows at all areas where partition walls are being added. Install sheetmetal end were plenum meets proposed wall and seal airtight.



FIRST FLOOR MECHANICAL DEMOLITION PLAN
SCALE - 1/8" = 1' - 0"

NOTES -
1. Fabricate and install metal splice covers for perimeter HVAC discharge plenums at windows at all areas where existing partitions are indicated to be removed. Anchor securely to existing perimeter enclosure. Match thickness and profile of existing splices.
2. Cut existing perimeter HVAC discharge plenums at windows at all areas where partition walls are being added. Install sheetmetal end were plenum meets proposed wall and seal airtight.

R
Q
P
O
N
M
L
K
J
I
H
G
F
E
D
C
B
A

1 2 3 4 5 6 7 8 9 10 11 12 13 14 15 16 17 18 19 20