

**GAWRON  
TURGEON  
ARCHITECTS**  
29 Black Point Road  
Scarborough, ME 04074  
www.gawronturgeon.com  
Tel. 207 . 883 . 6307  
Fax. 207 . 883 . 0361

**KeyBank**  
Office Renovation  
One Canal Plaza

REVISIONS		
#	DATE	DESCRIPTION

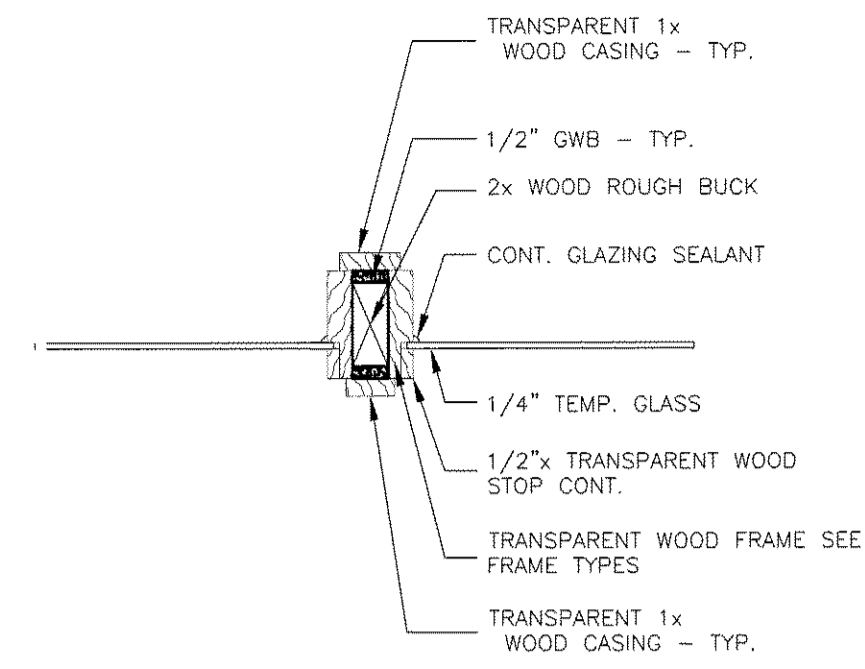
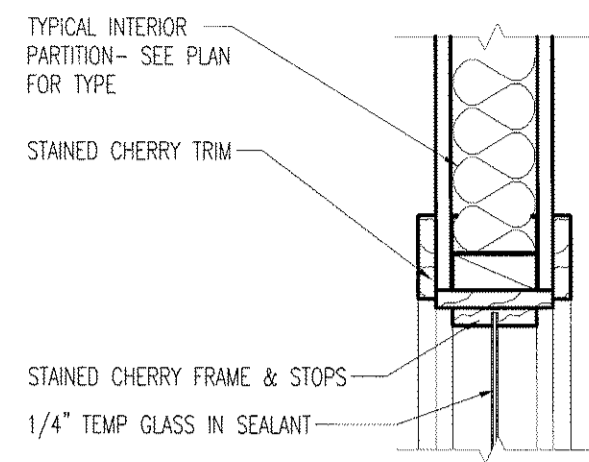
REVISIONS		
#	DATE	DESCRIPTION
1	08.29.07	PROCESS RELEASE - RJC CONSULTING
2	10.29.07	PRICING SET RELEASE

DATE:	10.22.07
PROJECT #:	020807
DRAWN BY:	LAP
CHECKED BY:	MET
DRAWING SCALE:	AS NOTED

**SHEET TITLE**  
CANAL PLAZA  
INTERIOR DETAILS

**A934**

© COPYRIGHT 1985-2006  
REPRODUCTION OR RESALE OF THIS  
DOCUMENT WITHOUT WRITTEN  
PERMISSION OF GAWRON TURGEON  
ARCHITECTS IS PROHIBITED

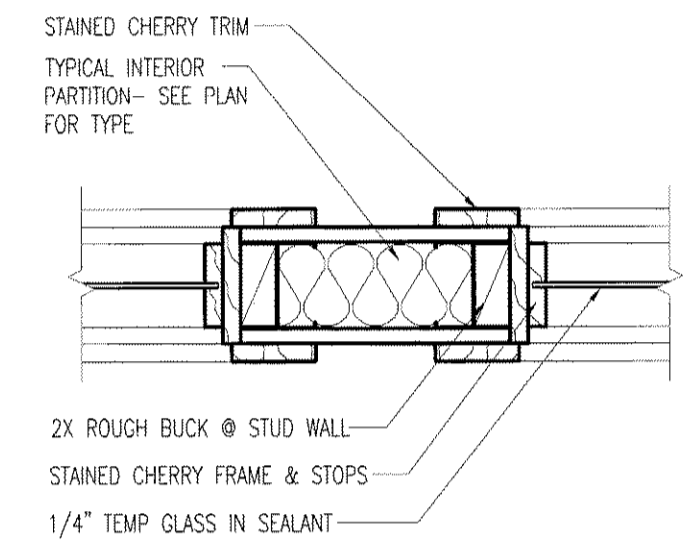
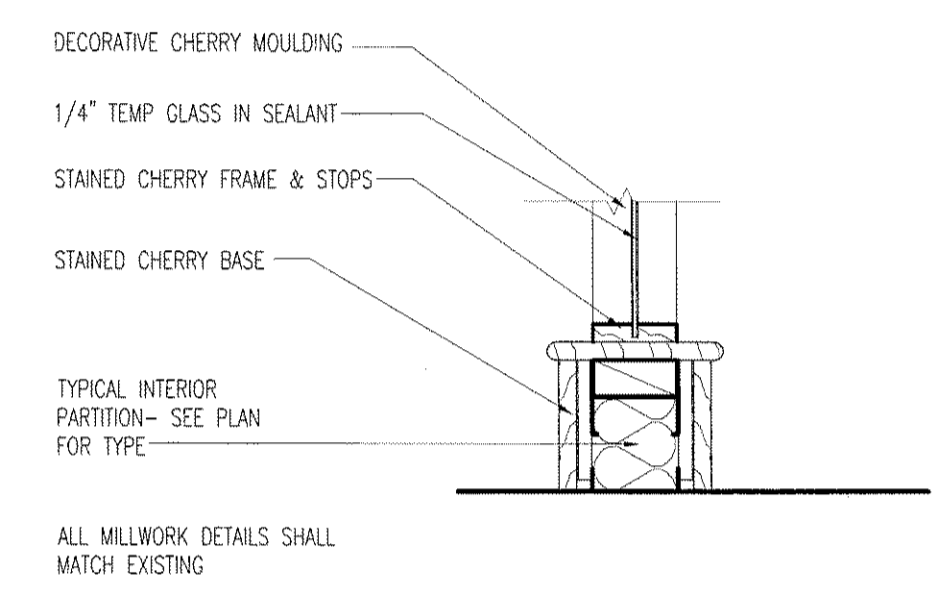


**N9 HEAD DETAIL @ INTERIOR WINDOW**

**N14 SIDELIGHT MULLION**

1 1/2"=1'-0" CANAL PLAZA - JAMB/SILL SIMILAR

1 1/2"=1'-0"

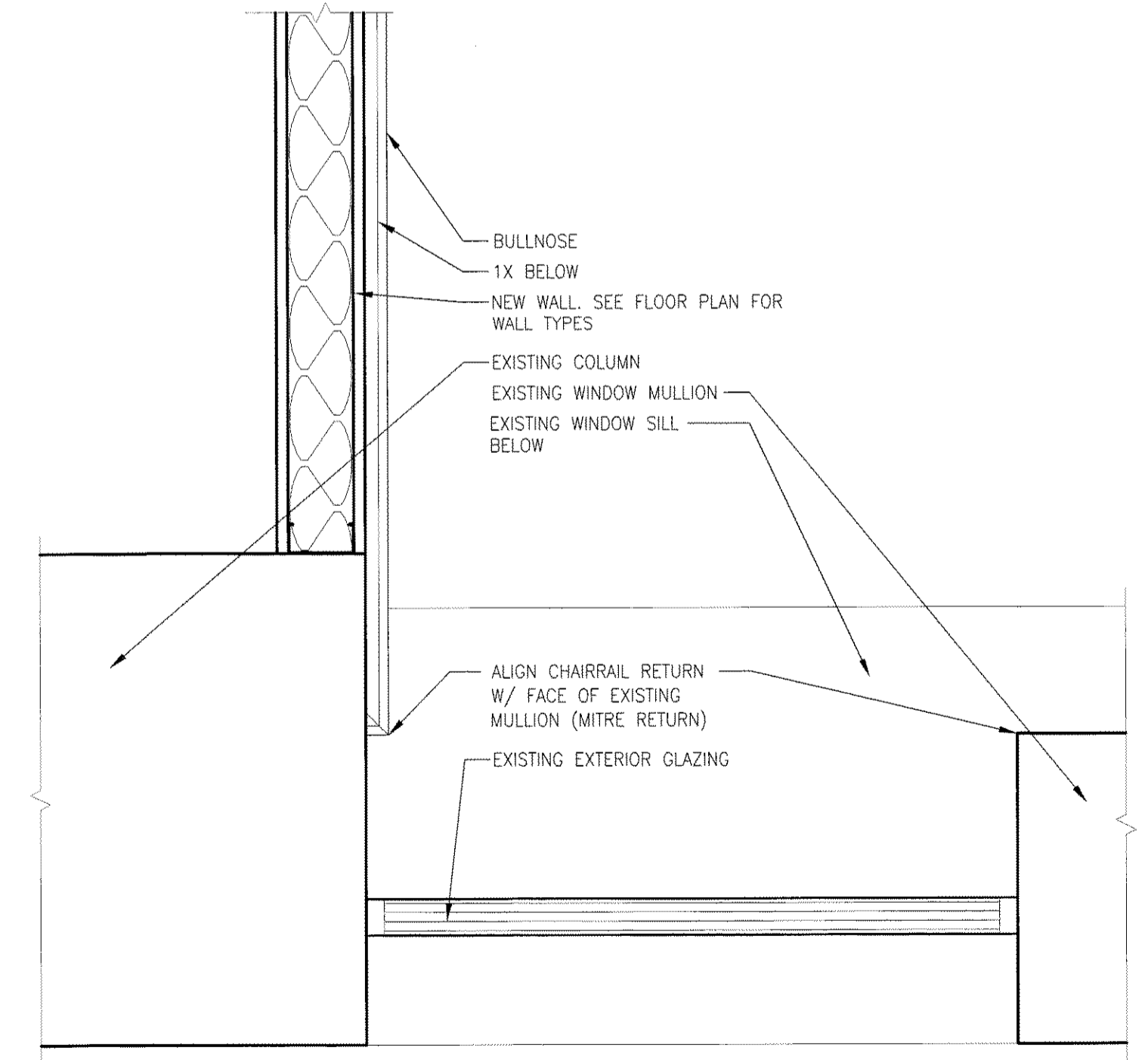
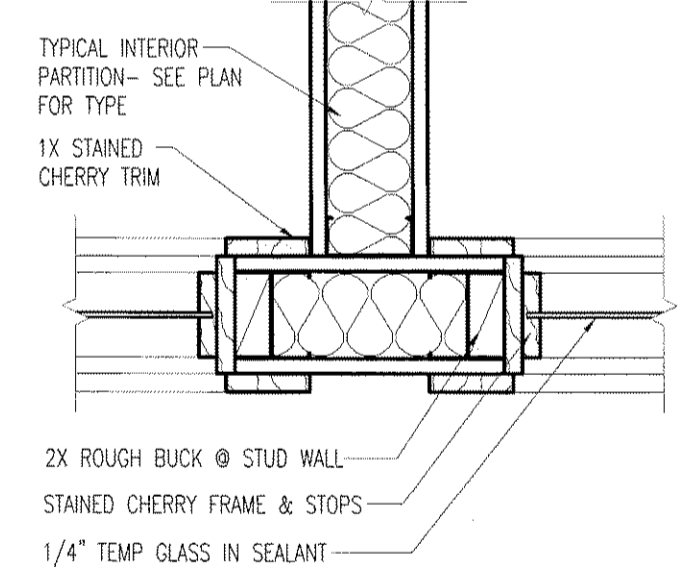


**J9 SIDELIGHT SILL/BASE DETAIL**

**J14 PLAN DETAIL @ INTERIOR WINDOW**

1 1/2"=1'-0" CANAL PLAZA

1 1/2"=1'-0"

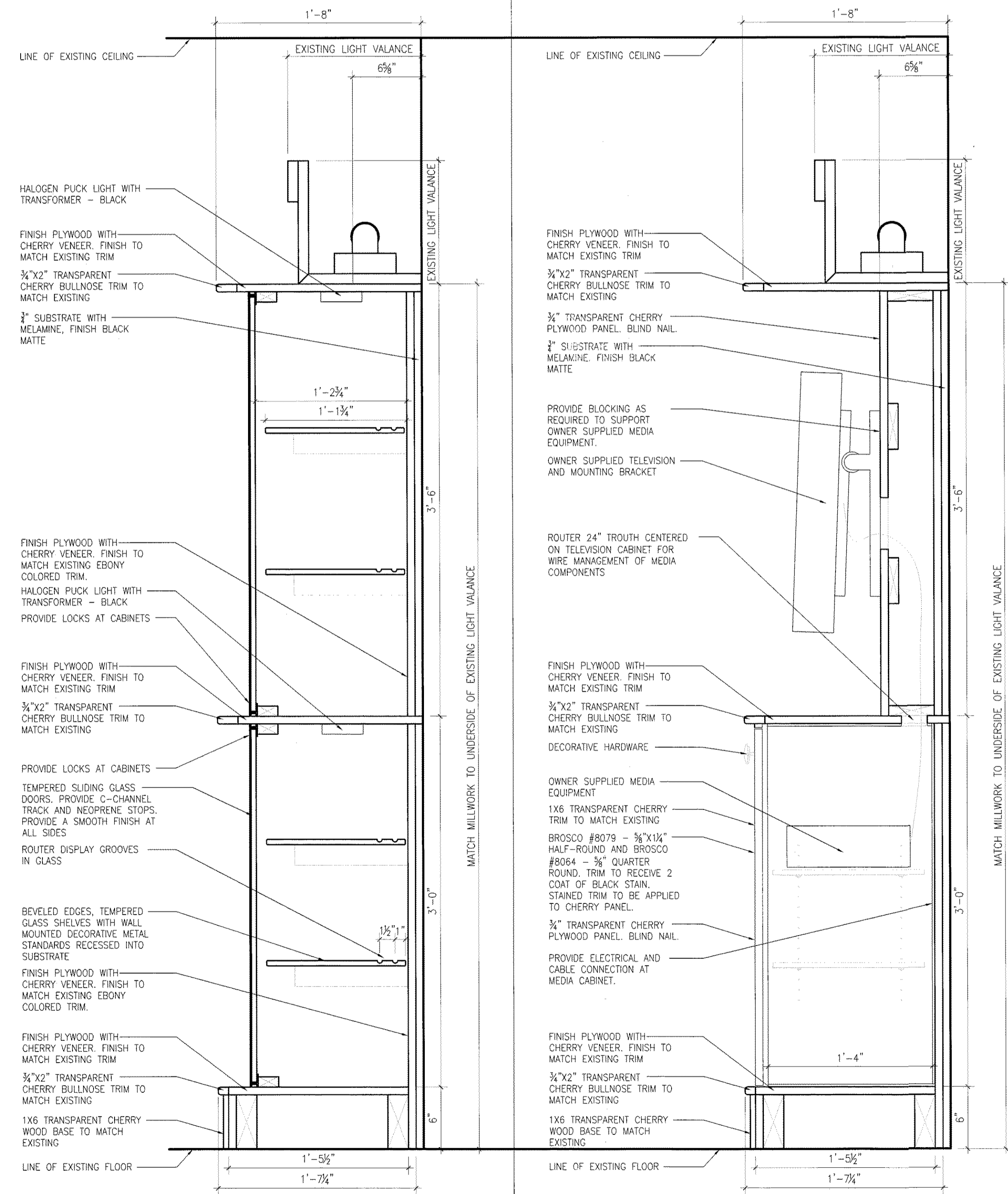
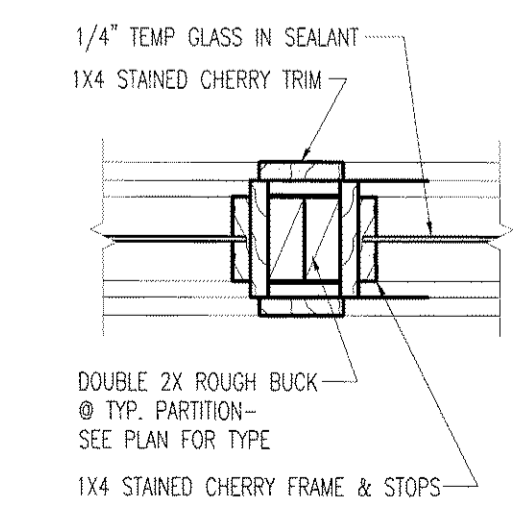


**E9 PLAN DETAIL @ INTERIOR WINDOW**

**A14 PLAN VIEW @ PERIMETER WALL**

1 1/2"=1'-0" CANAL PLAZA

1 1/2"=1'-0" CANAL PLAZA



**A1 SECTION @ DISPLAY CASE**

**A5 SECTION @ MEDIA CABINET**

**A9 PLAN DETAIL @ WINDOW MULLION**

**A14 PLAN VIEW @ PERIMETER WALL**

1 1/2"=1'-0" MEDIA / DISPLAY CABINET

1 1/2"=1'-0" MEDIA / DISPLAY CABINET

1 1/2"=1'-0" CANAL PLAZA

1 1/2"=1'-0" CANAL PLAZA

NOTE: COORDINATE WIRE ACCESS AND MANAGEMENT OF ELECTRICAL, DATA AND CABLE CONNECTIONS. COORDINATE REQUIREMENTS WITH OWNER SUPPLIED MEDIA COMPONENTS.

NOTE: COORDINATE WIRE ACCESS AND MANAGEMENT OF ELECTRICAL, DATA AND CABLE CONNECTIONS. COORDINATE REQUIREMENTS WITH OWNER SUPPLIED MEDIA COMPONENTS.