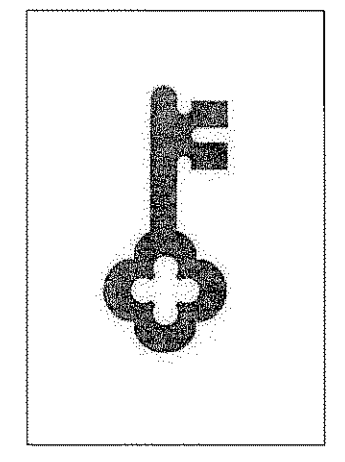


**GAWRON
TURGEON
ARCHITECTS**
29 Black Point Road
Scarborough, ME 04074
www.gawronturgeon.com
Tel. 207 . 883 . 6307
Fax. 207 . 883 . 0361

KeyBank
Office Renovation
One Canal Plaza



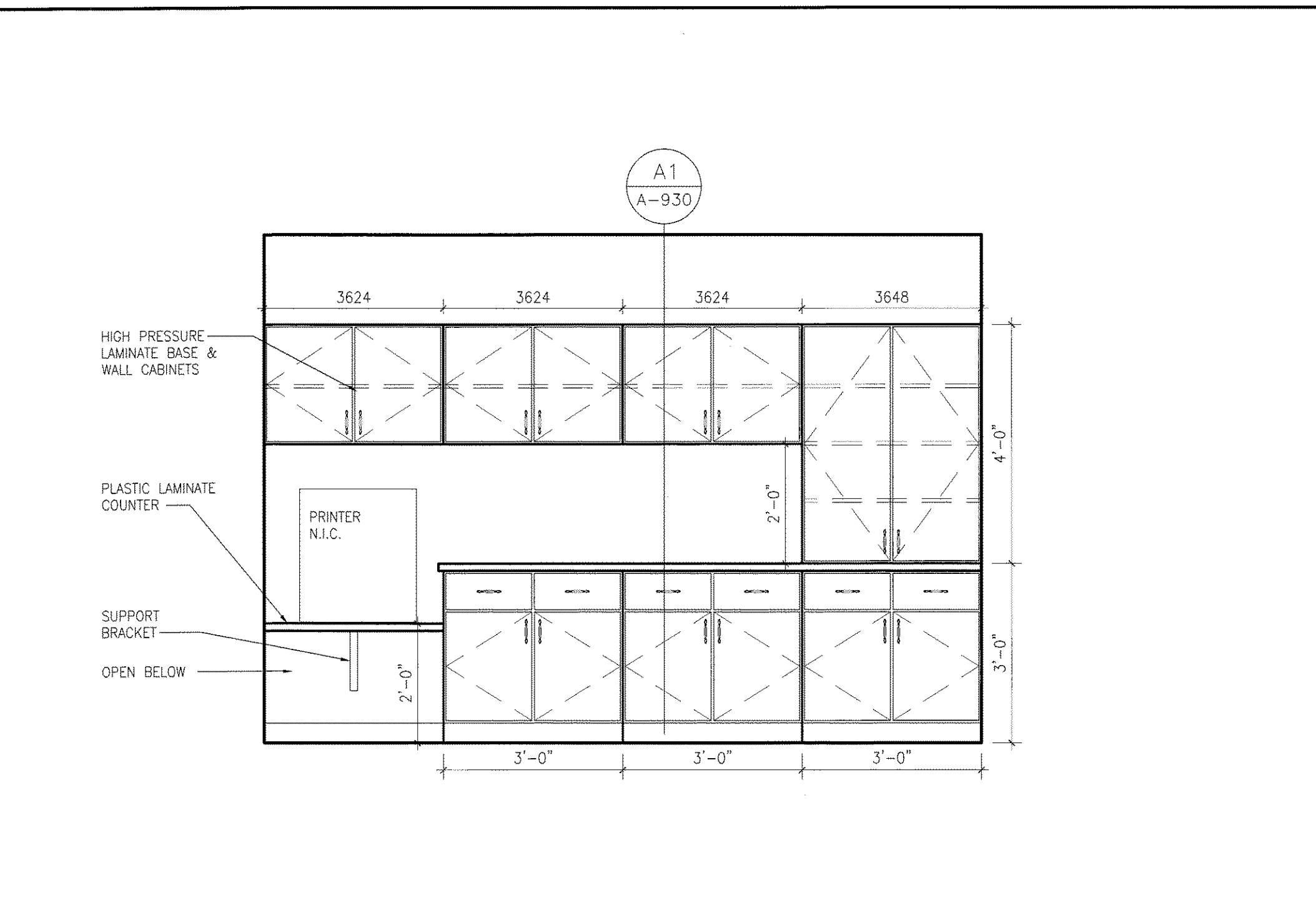
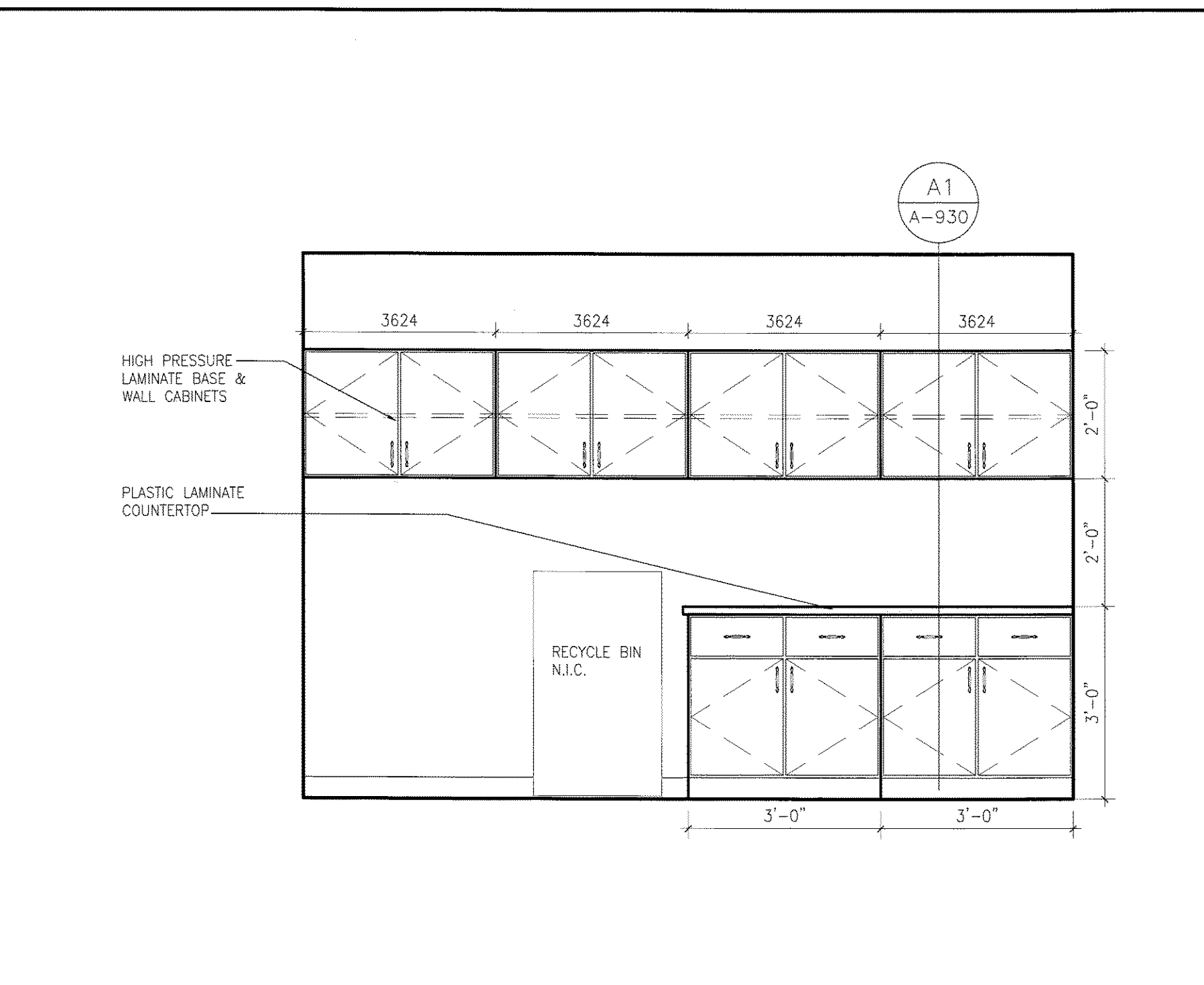
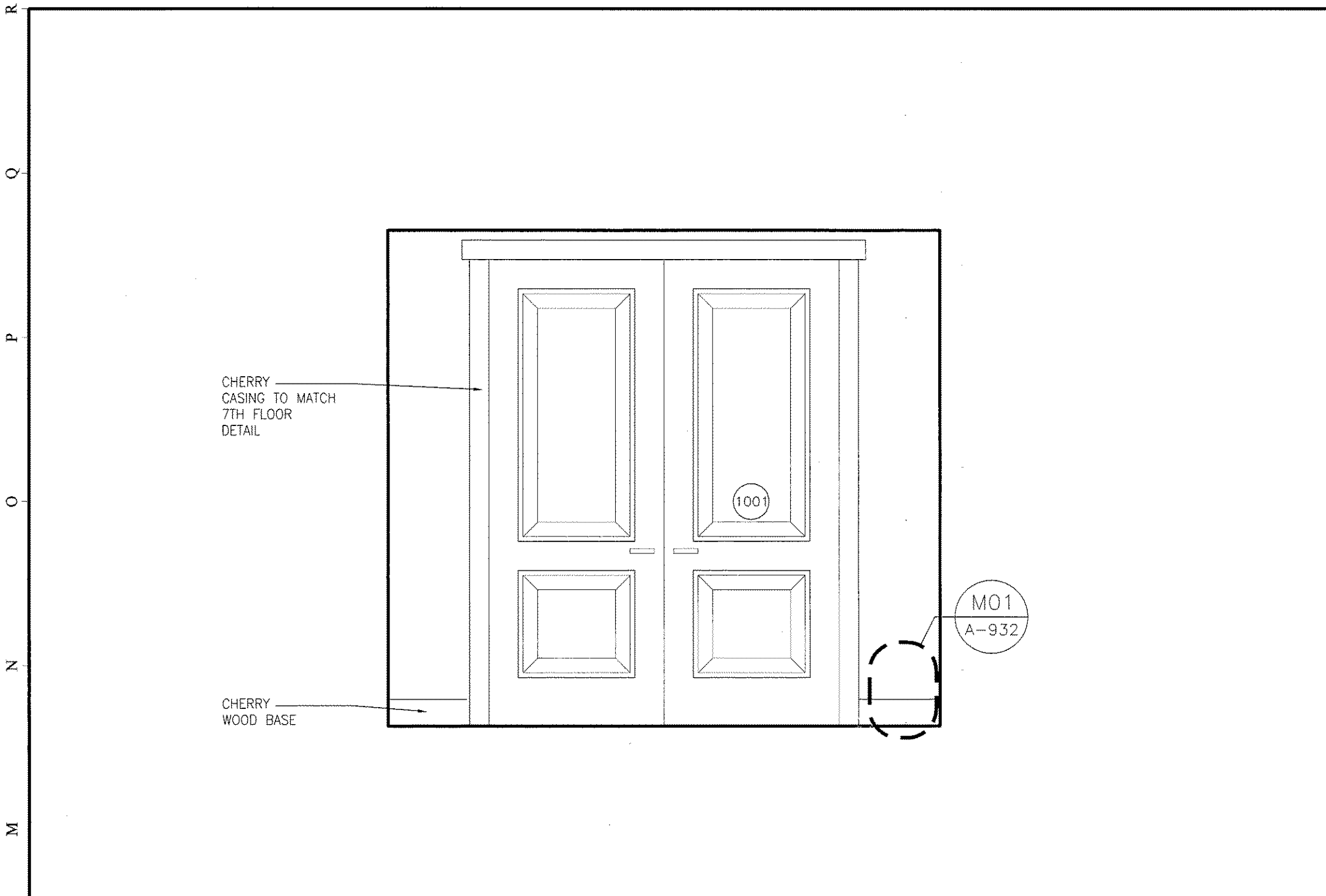
REVISIONS		
#	DATE	DESCRIPTION
1	08-29-07	PROCESS RELEASE - RJC CONSULTING
2	10-29-07	PRICING SET RELEASE

DATE:	10.22.07
PROJECT #	020807
DRAWN BY:	DLP
CHECKED BY:	MET
DRAWING SCALE	AS NOTED

SHEET TITLE
CANAL PLAZA
INTERIOR ELEVATIONS

A923

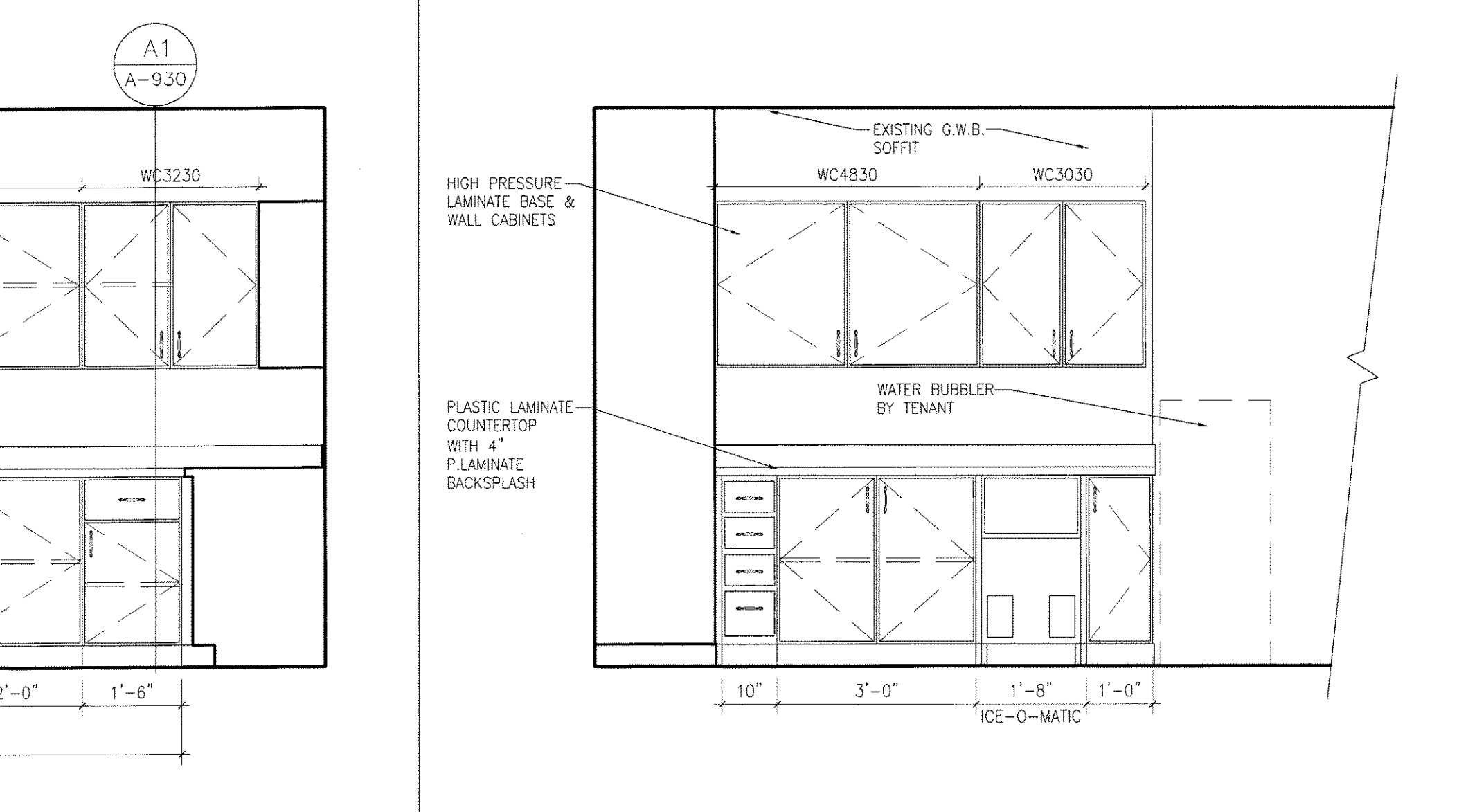
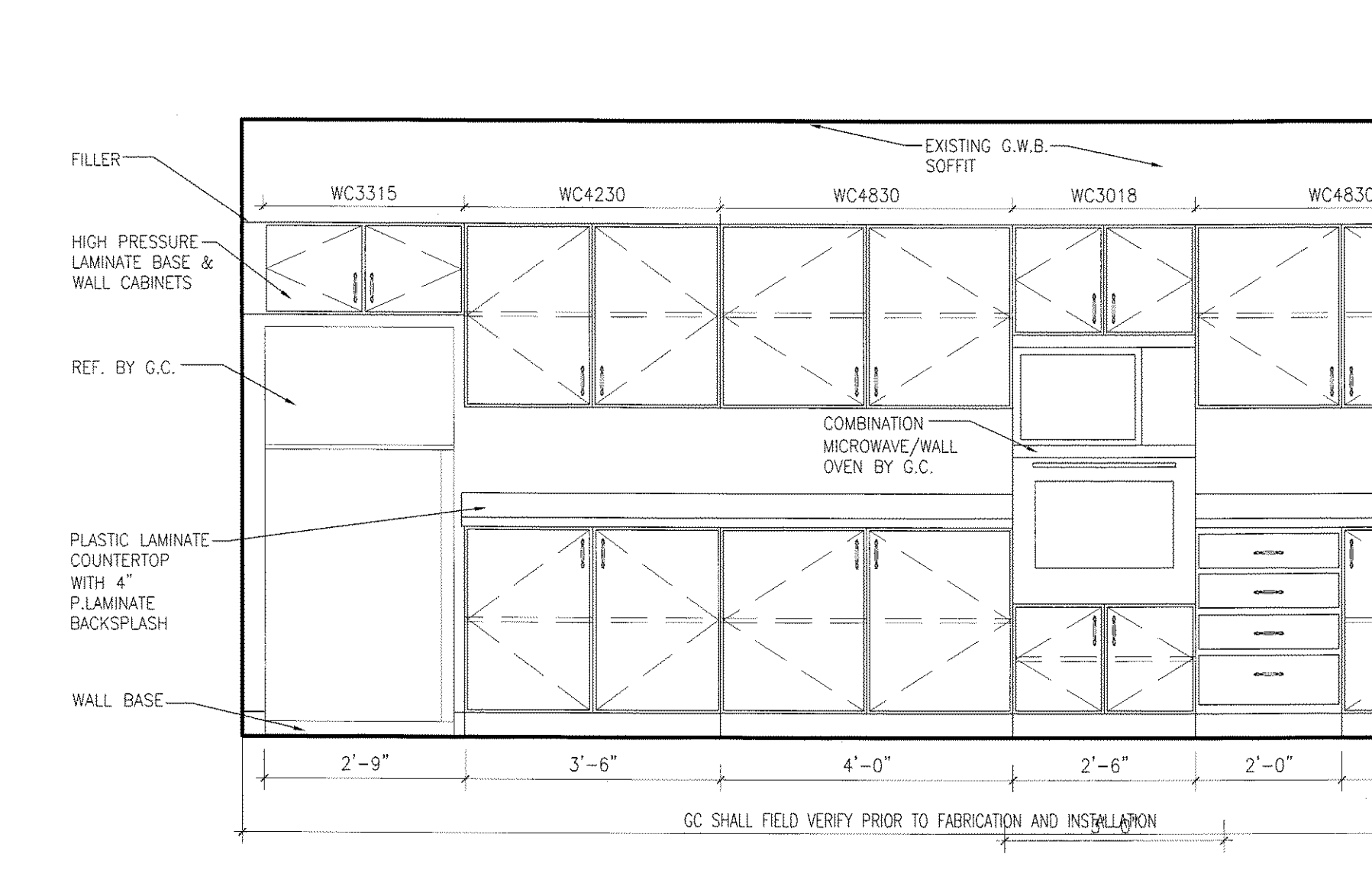
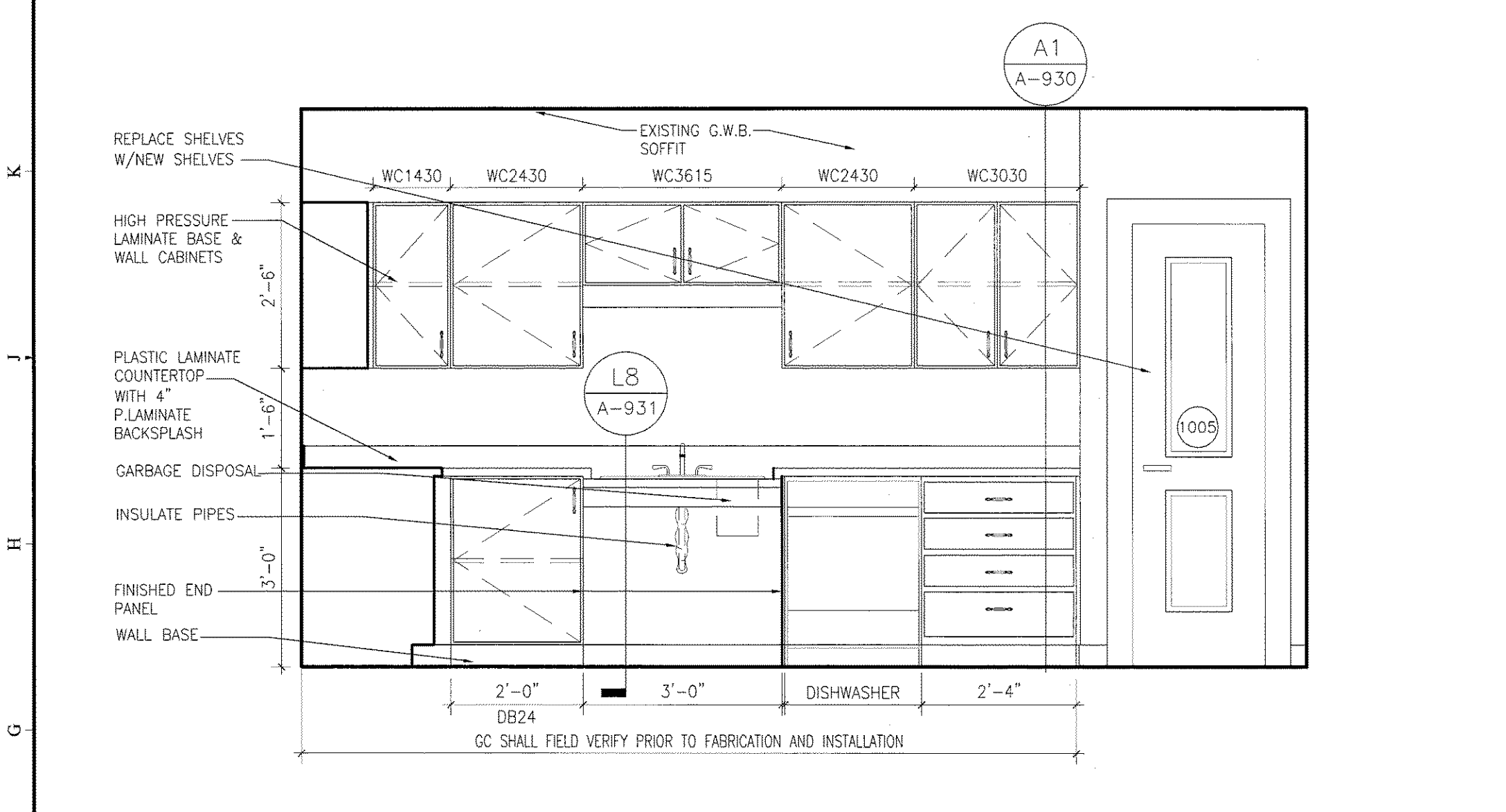
© COPYRIGHT 1985-2006
REPRODUCTION OR RELEASE OF THIS
DOCUMENT WITHOUT WRITTEN
PERMISSION OF GAWRON TURGEON
ARCHITECTS IS PROHIBITED



L1 CORRIDOR 1005
1/2"=1'-0" CANAL PLAZA, TENTH FLOOR - ENTRY DOORS TO PHOENIX ROOM

L8 WORK ROOM 727 - WEST WALL
1/2"=1'-0" CANAL PLAZA, SEVENTH FLOOR

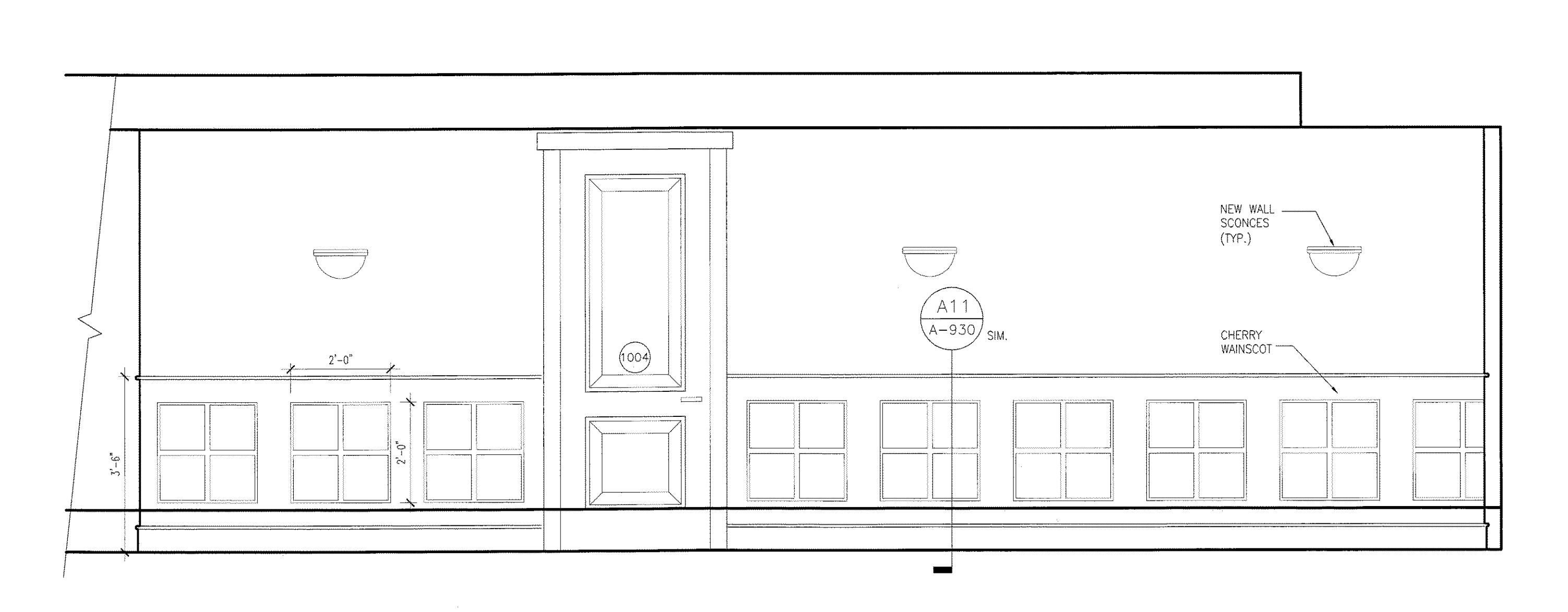
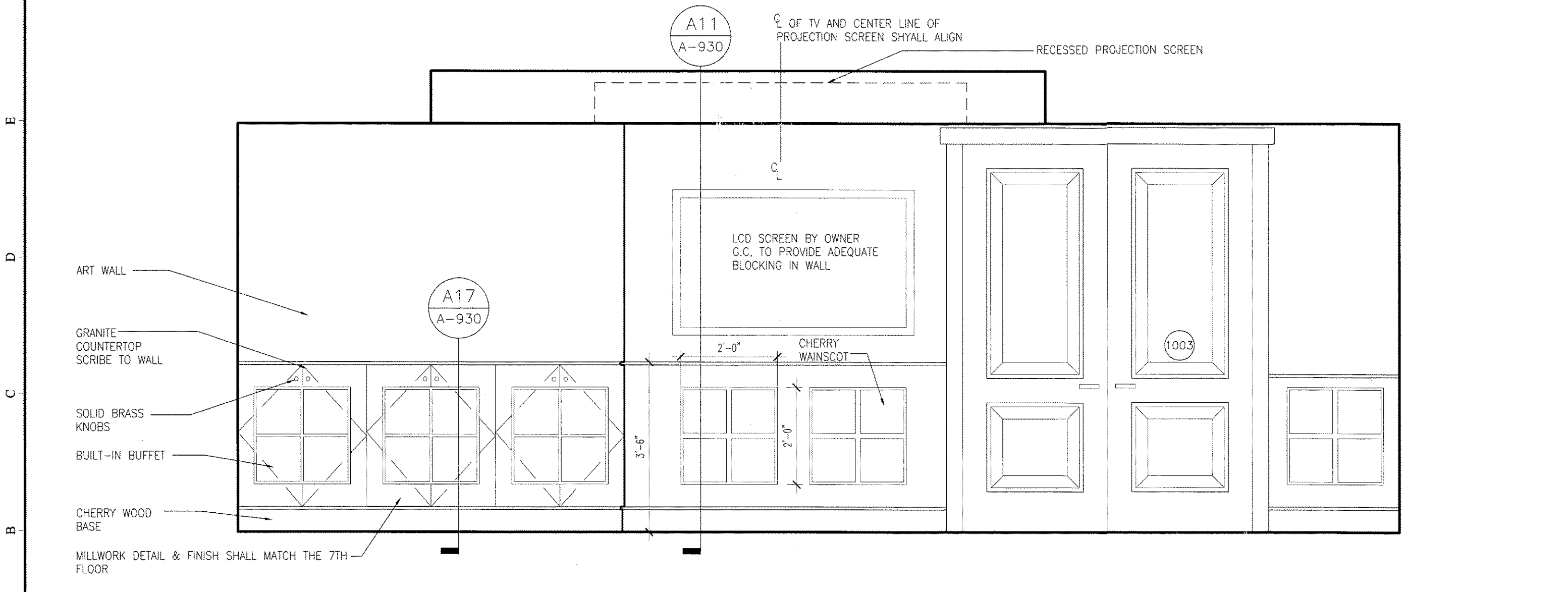
L14 WORK ROOM 727 - EAST WALL
1/2"=1'-0" CANAL PLAZA, SEVENTH FLOOR



F1 KITCHEN 1001 - PLAN WEST WALL
1/2"=1'-0" CANAL PLAZA, TENTH FLOOR

F8 KITCHEN 1001 - PLAN SOUTH WALL
1/2"=1'-0" CANAL PLAZA, TENTH FLOOR

F16 KITCHEN 1001 - PLAN EAST WALL
1/2"=1'-0" CANAL PLAZA, TENTH FLOOR



A1 PHOENIX ROOM 1000 - PLAN EAST WALL
1/2"=1'-0" CANAL PLAZA, TENTH FLOOR

A11 PHOENIX ROOM 1000 - PLAN SOUTH WALL
1/2"=1'-0" CANAL PLAZA, TENTH FLOOR

1 2 3 4 5 6 7 8 9 10 11 12 13 14 15 16 17 18 19 20