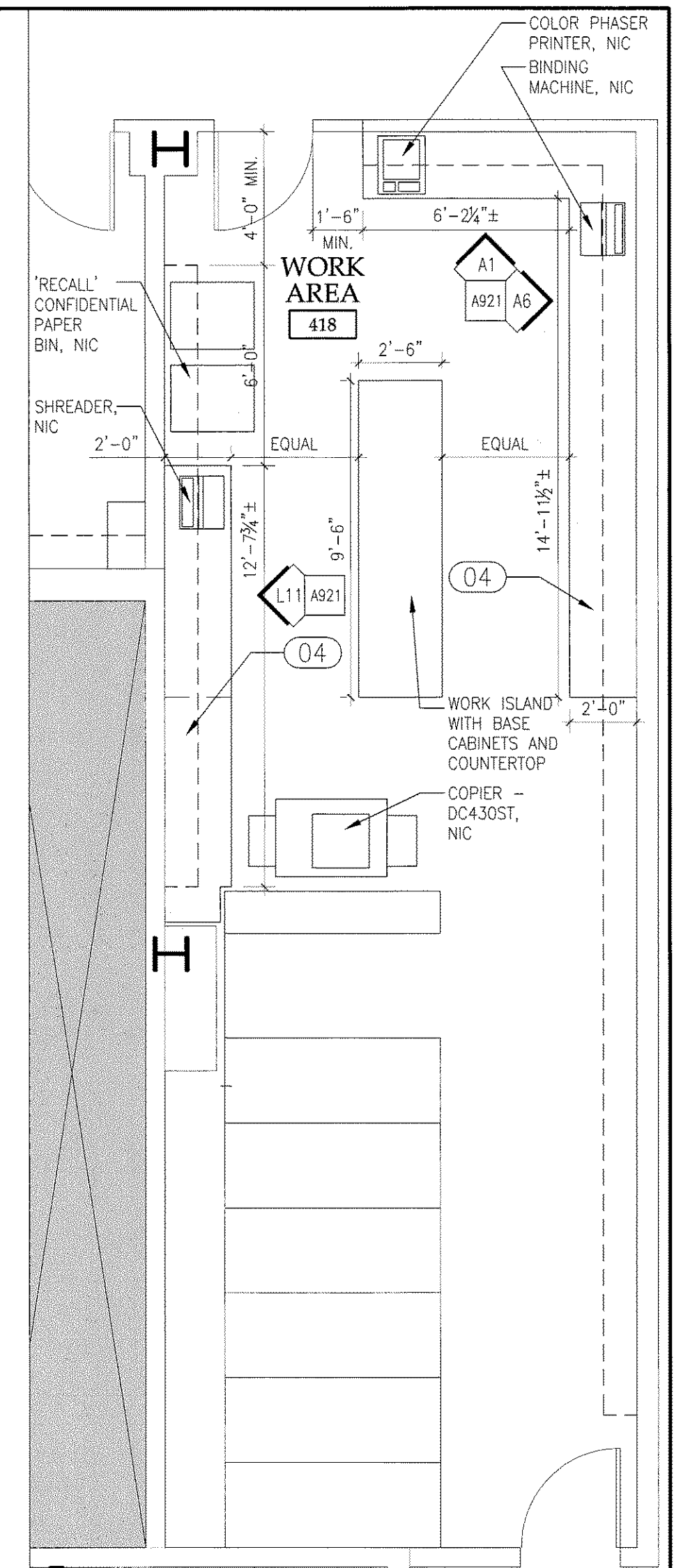
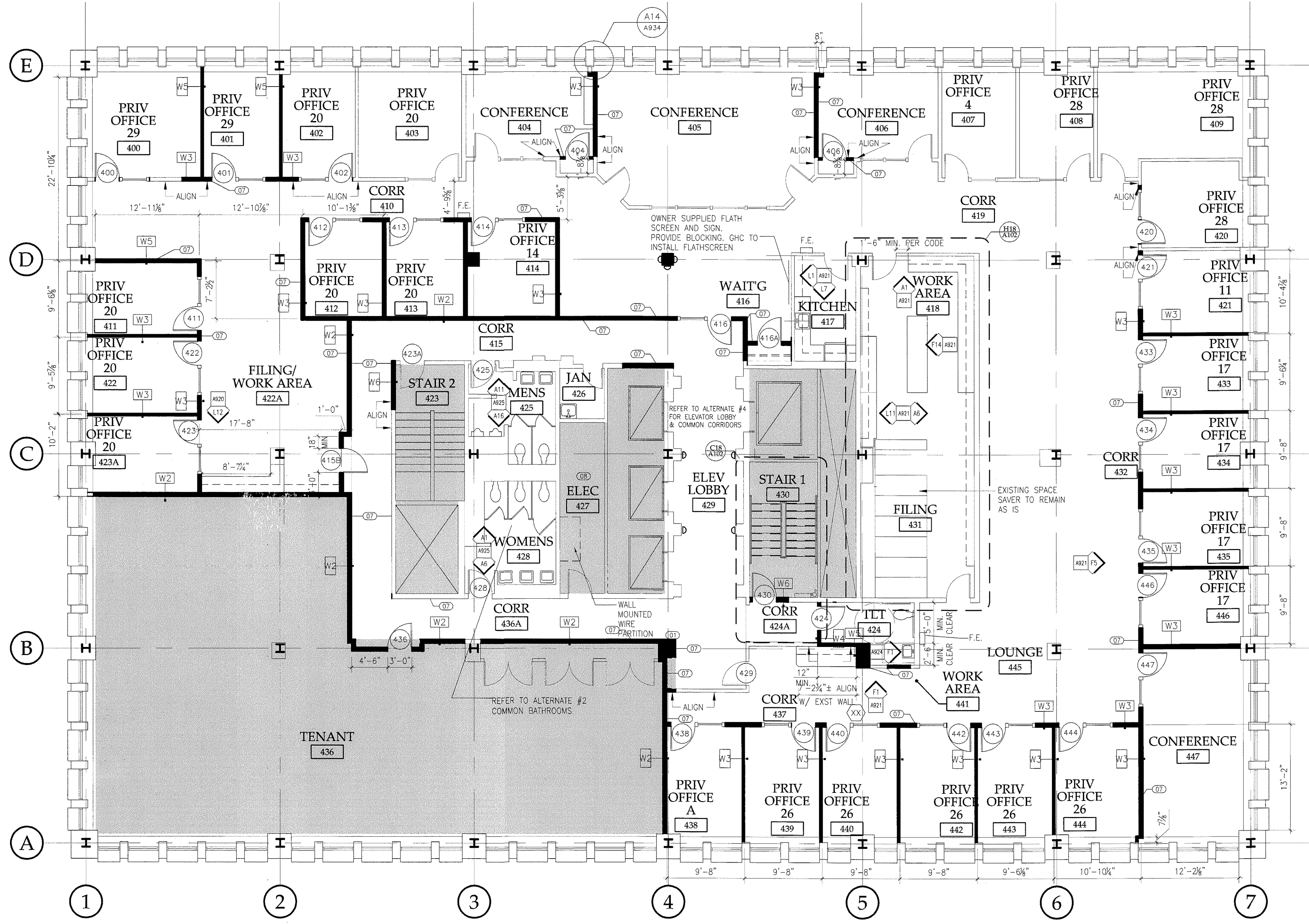
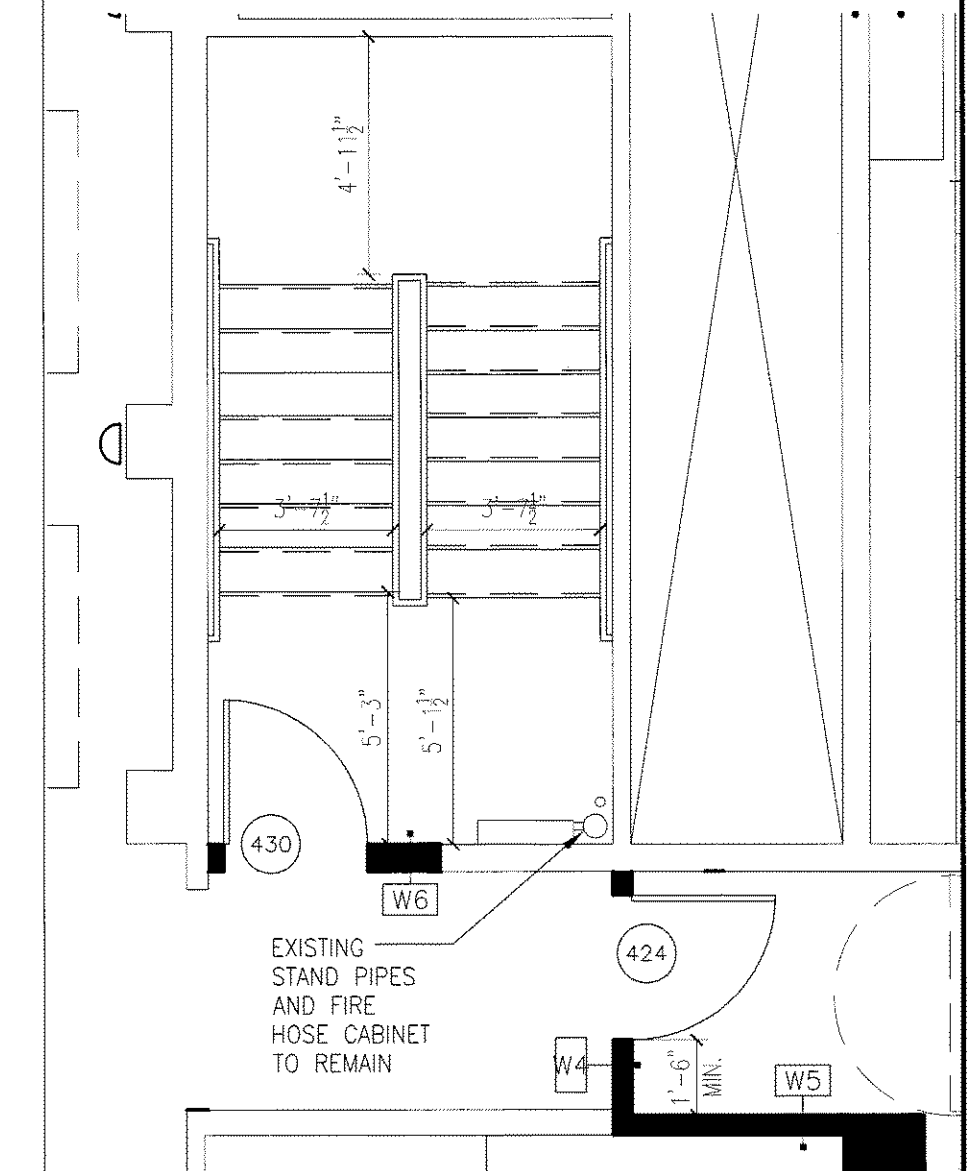


R  
Q  
P  
O  
N  
M  
L  
K  
J  
I  
H  
G  
F  
E  
D  
C  
B  
A



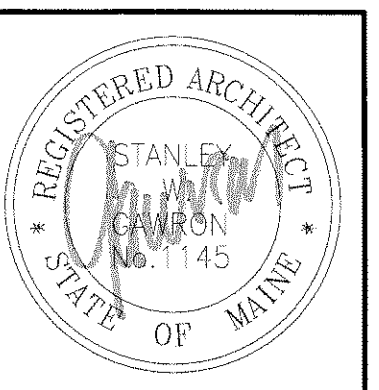
**H18 ENLARGED PARTIAL PLAN**  
1/4"=1'-0" FOURTH FLOOR, FLOOR PLAN - WORK AREA 418



**C18 ENLARGED PARTIAL PLAN**  
1/4"=1'-0" FOURTH FLOOR, FLOOR PLAN - STAIR 1 430

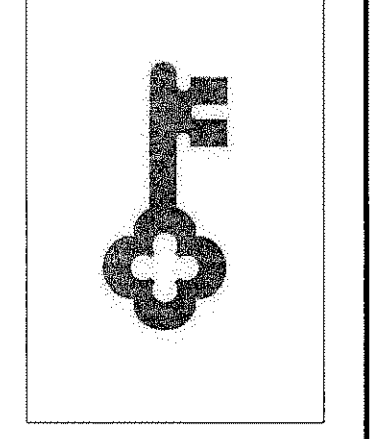
- A18 LEGEND**
- (01) METAL STORAGE CARS WITH LOCKS
  - (02) HEAVY-DUTY METAL UTILITY SHELVING UNITS WITH 5 SHELVES PRODUCT SHELVING DIRECT 1-800-500-9141 METAL POINT PLUS HEAVY DUTY STORAGE SHELVING - 14 GAUGE STEEL SHELVES CAPACITY 1200 LB. LENGTH INDICATED ON PLAN.
  - (03) MAIL CENTER - CONSOLE AND SORT MODULES
  - (04) BASE AND WALL CABINETS WITH COUNTERTOP
  - (05) NEW DOORS AND SLEIGHT SHALL MATCH EXISTING
  - (06) PATCH & REPAIR WALL & MILLWORK
  - (07) CHERRY CHAIR RAIL & FLOOR BASE
  - (08) PROVIDE THROUGH-PENETRATION FIRESTOP SYSTEMS AT ELECTRIC ROOM EXISTING PENETRATIONS. REFER TO C103 FOR DETAIL.

NOTE: PATCH IN CHERRY, NEW CHAIR RAIL AND FLOOR BASE AS NECESSARY DUE TO DEMOLITIONS



**GAWRON TURGEON ARCHITECTS**  
29 Black Point Road  
Scarborough, ME 04074  
www.gawronturgeon.com  
Tel. 207. 883. 6307  
Fax. 207. 883. 0361

**KeyBank**  
Office Renovation  
One Canal Plaza



**REVISIONS**

#	DATE	DESCRIPTION
1	08.29.07	PROGRESS RELEASE - RJC CONSULTING
2	10.29.07	PRICING SET RELEASE

DATE: 10.22.07  
PROJECT #: 020807  
DRAWN BY: LAP  
CHECKED BY: MET  
DRAWING SCALE: AS NOTED

**SHEET TITLE**  
FOURTH FLOOR PLAN

**A102**

**A1 FLOOR PLAN**  
1/8"=1'-0" FOURTH FLOOR

**A18 LEGEND**  
NTS DEPARTMENTS

© COPYRIGHT 1985-2006  
PERMISSION TO REPRODUCE OR TRANSMIT IN ANY FORM OR BY ANY MEANS WITHOUT WRITTEN PERMISSION OF GAWRON TURGEON ARCHITECTS IS PROHIBITED.