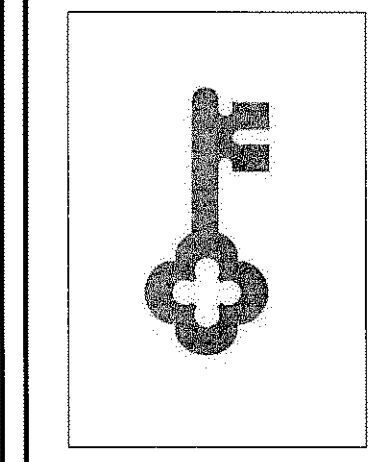


**GAWRON
TURGEON
ARCHITECTS**
29 Black Point Road
Scarborough, ME 04074
www.gawronturgeon.com
Tel. 207.883.6307
Fax. 207.883.0361

KeyBank
Office Renovation
One Canal Plaza



REVISIONS		
#	DATE	DESCRIPTION
1	08.29.07	PROGRESS RELEASE - RIC CONSULTING
2	10.29.07	PRICING SET RELEASE

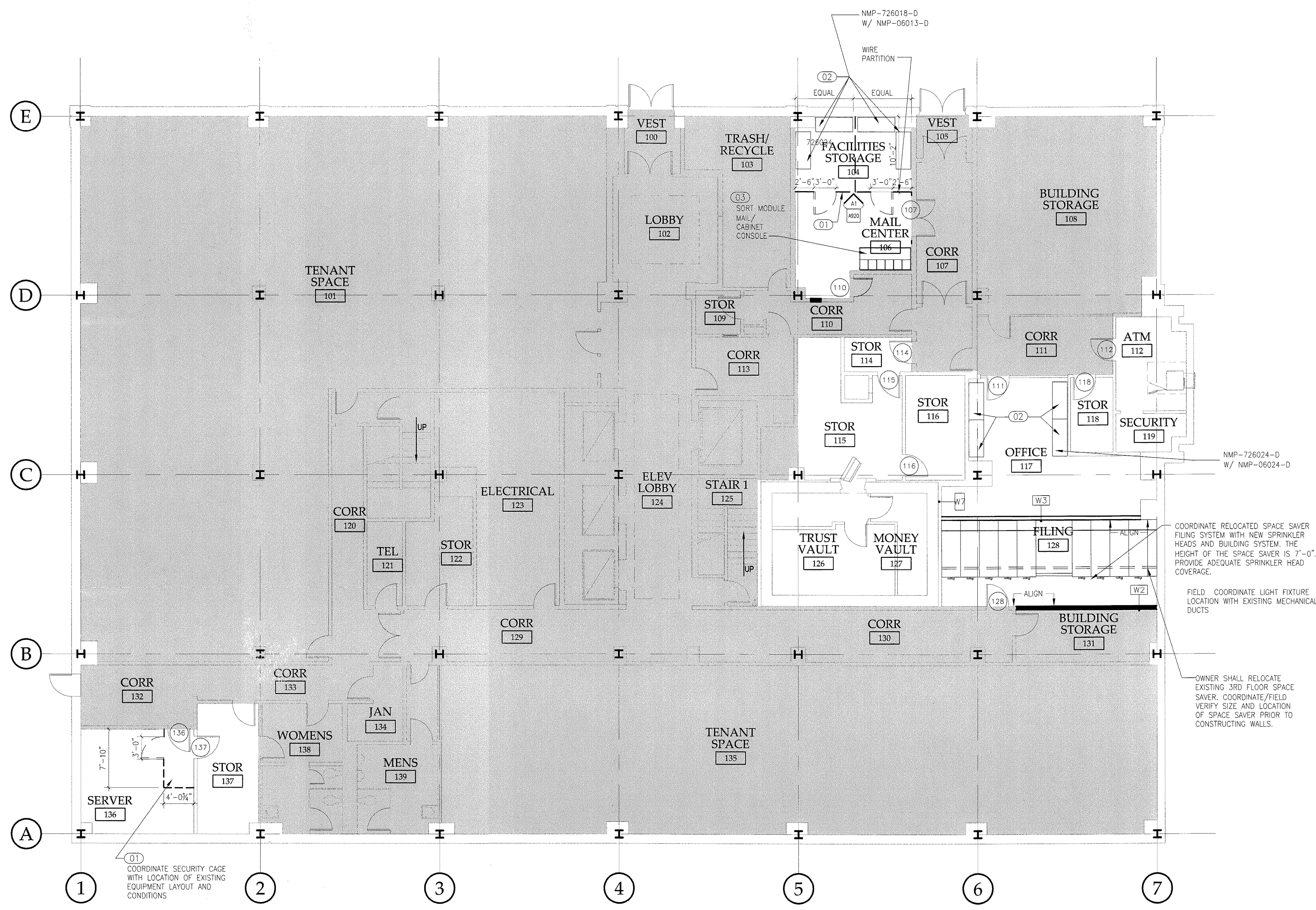
DATE:	10.22.07
PROJECT #	020807
DRAWN BY:	LAP
CHECKED BY:	MET
DRAWING SCALE	AS NOTED

SHEET TITLE
FIRST FLOOR PLAN

A100

© COPYRIGHT 1985-2006
REPRODUCTION OR RESALE OF THIS
DOCUMENT WITHOUT WRITTEN
PERMISSION OF GAWRON TURGEON
ARCHITECTS IS PROHIBITED.

1. PATCH & REPAIR WALLS IN AREAS OF
VALANCE REMOVAL, SINK REMOVAL, PLASTER
REMOVAL.



- (01) METAL STORAGE CAGES WITH LOCKS
- (02) HEAVY-DUTY METAL UTILITY SHELVING UNITS WITH 5 SHELVES PRODUCT: SHELVING DIRECT 1-800-500-9141 METAL POINT PLUS HEAVY DUTY STORAGE SHELVING - 14 GAUGE STEEL SHELVES CAPACITY 1200 LB. LENGTH INDICATED ON PLAN
- (03) MAIL CENTER - CONSOLE AND SORT MODULES
- (04) BASE AND WALL CABINETS WITH COUNTERTOP
- (05) NEW DOORS AND SIDELIGHT SHALL MATCH EXISTING
- (06) PATCH & REPAIR WALL & MILLWORK
- (07) CHERRY CHAIR RAIL & FLOOR BASE
- (08) PROVIDE THROUGH-PENETRATION FIRESTOP SYSTEMS AT ELECTRIC ROOM EXISTING PENETRATIONS. REFER TO G103 FOR RATING.

A1 FLOOR PLAN
1/8"=1'-0"
FIRST FLOOR

A18 PLAN NOTES
NTS
FLOOR PLAN