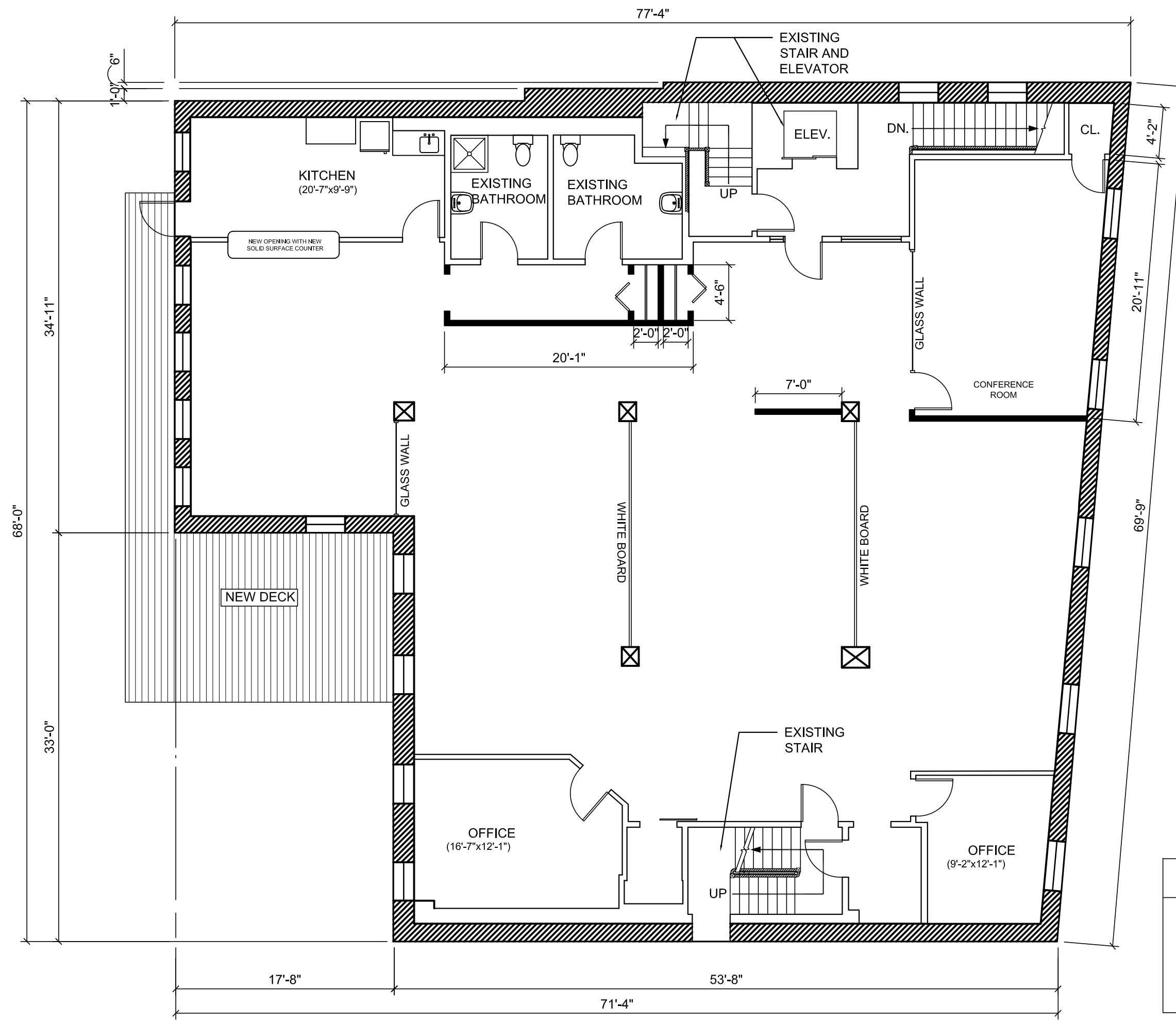
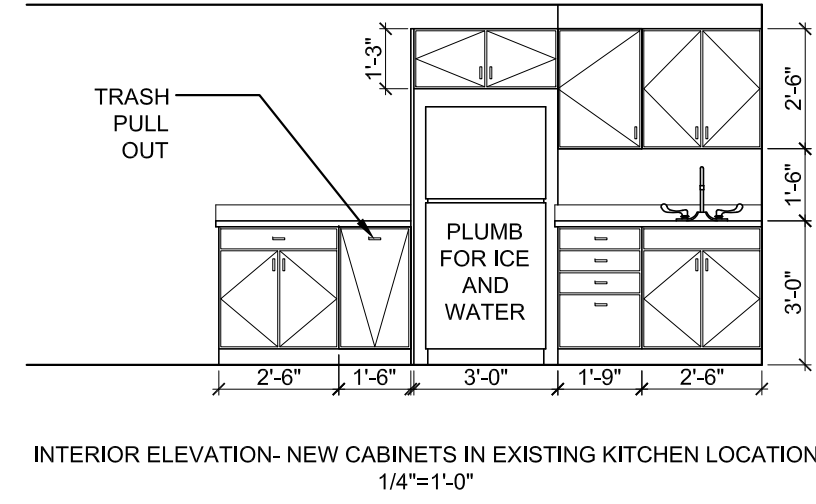
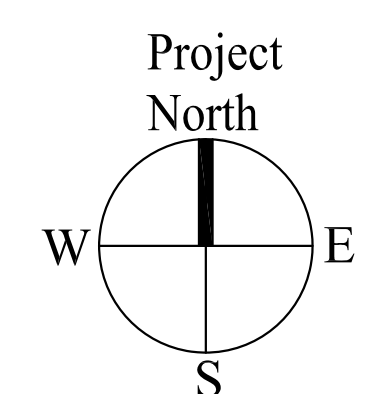
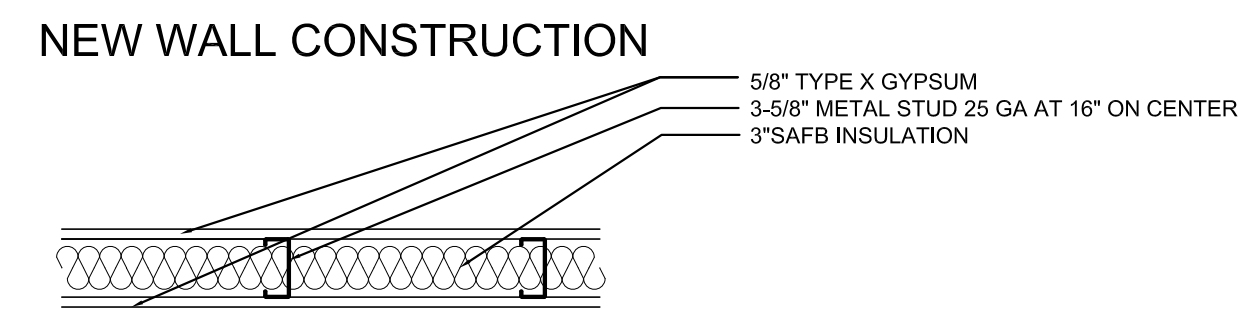


RENOVATION OF EXISTING OFFICE SPACE  
 CODES:  
 GOVERNING CODE 2009 IEBC  
 NEW FINISHES AND ELECTRICAL WORK TO  
 MEET IBC  
 WORK AREA SPRINKLED UNDER NFPA13  
 NO CHANGE TO VERTICAL SHIFTS  
 ENTRY AND TOILETS ARE CURRENTLY  
 ACCESSIBLE AND WILL REMAIN SO



LEGEND	
	NEW INTERIOR WALL
	EXISTING INTERIOR WALL
	EXISTING EXTERIOR WALL

**1** SECOND FLOOR PLAN  
 SCALE: 1/8"=1'-0"



Prepared For:	
Consulting Engineer:	
<b>ARCHETYPE</b> architects 48 Union Wharf Portland, Maine 04101 (207) 772-6022 Fax (207) 772-4056	
<b>FOREFLIGHT</b> 4 CANAL PLAZA PORTLAND, MAINE	
Revisions:	
Date: 8 November 2016 Scale: 1/8" = 1'-0"	<b>SECOND FLOOR PLAN</b>
A1.01	