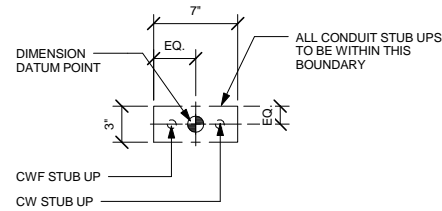


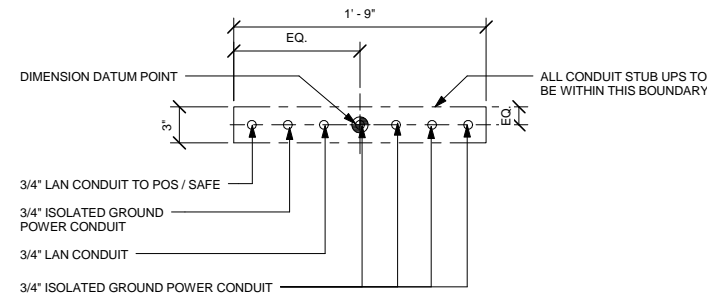
3 STUB UPS - DOUBLE POS/SAFE

Scale: 1 1/2" = 1'-0"



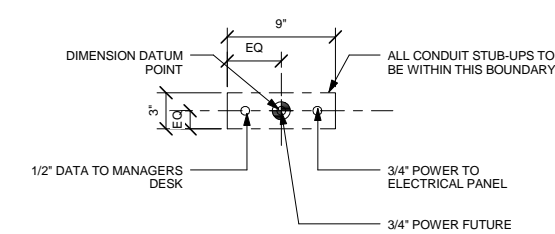
4 STUB UPS - ESPRESSO

Scale: 1 1/2" = 1'-0"



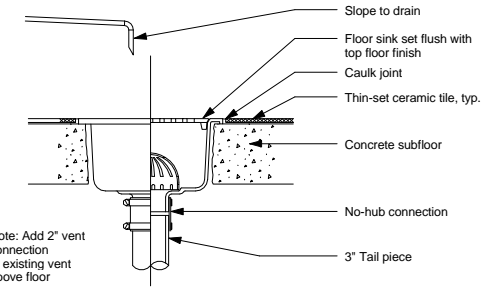
5 STUB UPS - FRONTBAR

Scale: 1 1/2" = 1'-0"



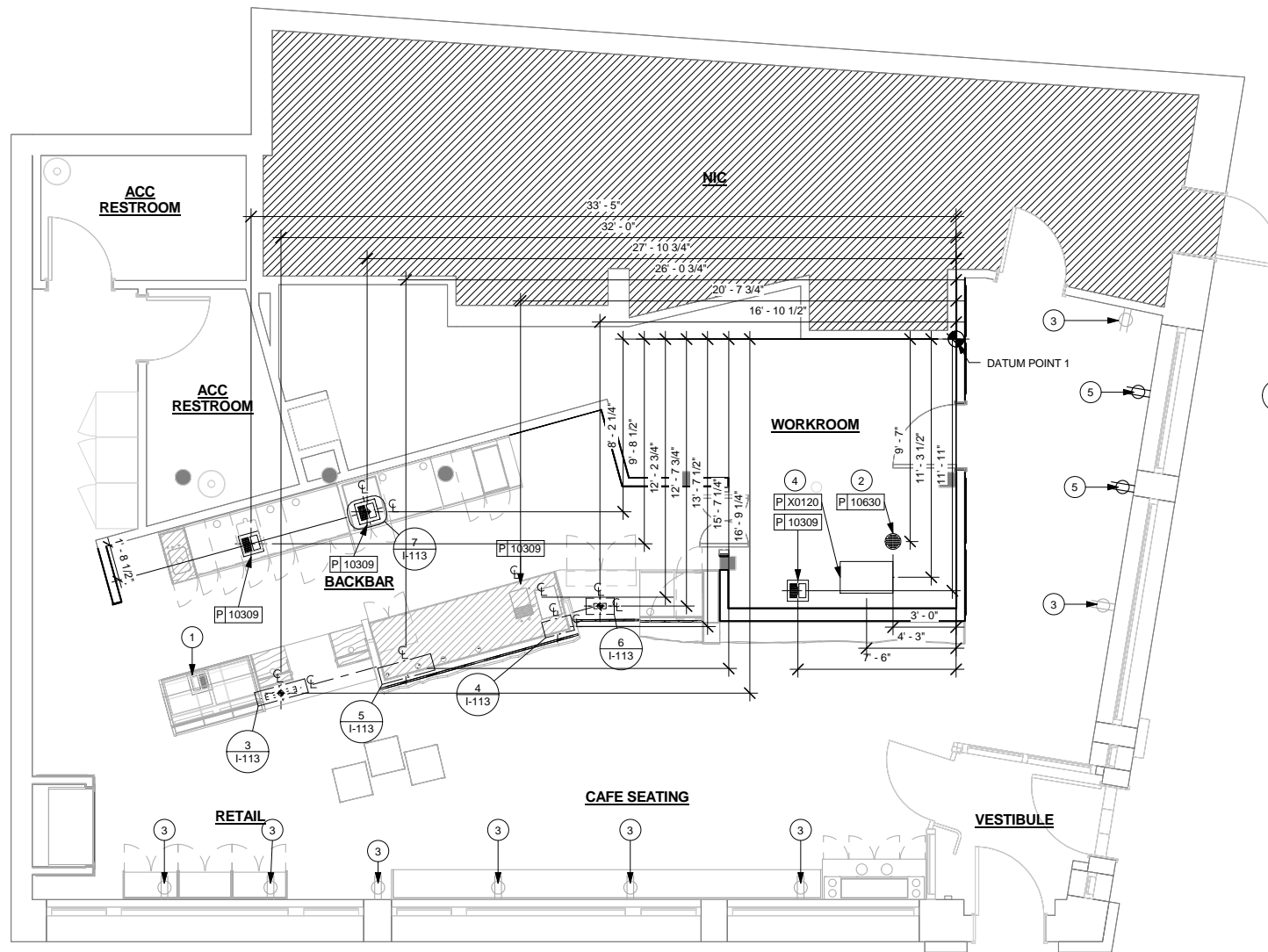
6 STUB UPS - HANDOFF

Scale: 1 1/2" = 1'-0"



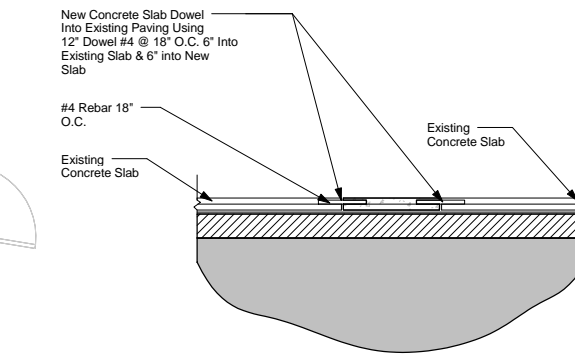
7 Floor Drain Section

Scale: 1 1/2" = 1'-0"



1 PENETRATION PLAN W/ CASEWORK OVERLAY

Scale: 1/4" = 1'-0"



8 Trenching Repair Detail

Scale: 1/2" = 1'-0"

**PENETRATION PLAN NOTES**

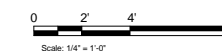
- A. ALL STUB-UP DIMENSIONS ARE RELATIVE TO FINISHED WALL LOCATIONS (SHOWN AS OUTLINES ON THIS PLAN). REFER TO FLOOR PLAN FOR WALL PLACEMENT.
- B. FLOOR SINK: REFER TO CUT SHEETS FOR COMPONENT SPECIFICATIONS AND CUTOFF REQUIREMENTS.
- C. WASTE LINE PENETRATIONS: REFER TO PLUMBING PLANS FOR INDIVIDUAL LINE SPECIFICATIONS.
- D. STUB-UP PENETRATIONS: REFER TO PLUMBING PLANS FOR INDIVIDUAL STUB-UP SPECIFICATIONS.
- E. TOILET FLOOR PENETRATION: REFER TO CUT SHEETS FOR STUB-UP LOCATION RELATIVE TO FINISHED WALL.
- F. PENETRATION TO BE LOCATED ON CENTERLINE OF WALL OR AS REQUIRED PER CONDITIONS.
- G. TRENCHING OUTLINE FOR GUIDELINE USE ONLY. GENERAL CONTRACTOR TO COORDINATE WITH SPECIFIC TRADES AND SITE CONDITIONS TO DETERMINE ACTUAL LAYOUT.

**SHEET NOTES**

- 1. EXISTING FLOOR DRAIN.
- 2. GC TO INSTALL NEW PENETRATIONS AS INDICATED. COORDINATE ALL PENETRATIONS WITH BUILDING MANAGEMENT. EXISTING BASEMENT BELOW.
- 3. EXISTING ELECTRICAL OUTLET.
- 4. GREASE TRAP PENETRATION. REFER TO PLUMBING SHEETS FOR MORE INFORMATION. LOCATE AS REQUIRED PER CONDITION.
- 5. PROPOSED ELECTRICAL OUTLET.

**PENETRATION PLAN LEGEND**

- FLOOR SINK
- ⊕ FLOOR PENETRATION
- ⊕ PLUMBING PENETRATION AREA
- ⊕ ELECTRICAL PENETRATION AREA

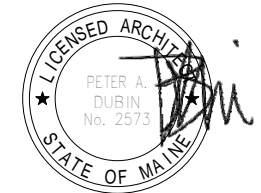


Starbucks Coffee Company  
2401 Utah Avenue South  
Seattle, Washington 98134  
(206) 318-1575

These Drawings and Specifications are confidential and shall remain the sole property of Starbucks Corporation. They shall not be reproduced (in whole or in part), shared with third parties or used in any manner on other projects or extensions to this project without the prior written consent of Starbucks Corporation. These drawings and specifications are intended to express Design Intent for a prototypical Starbucks store (which is subject to change at anytime) and do not reflect actual site conditions. Neither party shall have any obligation nor liability to the other (except as stated above) until a written agreement is fully executed by both parties.

Architect of Record  
**NORR**  
ARCHITECTS PLANNERS  
325 N. LaSalle St. Suite 700 Chicago, IL 60654  
1 312.424.2400 | 312.424.2424 | www.norr.com

ENGINEER OF RECORD  
William J. Alkenmeyer, P.E.  
353 Marshall Avenue  
St. Louis, Missouri 63119  
Phone (314) 772-1782  
Fax (314) 772-0108  
Engineering Consultant



Revision Schedule			
Rev	Date	By	Description

Project Name:  
**Exchange Street**  
Project Address:  
**176 Middle Street  
Portland, ME 04101**

Store #: 7408  
Project #: 03196-029  
Concept: NCS  
Palette: HERITAGE  
Issue Date: 03.25.2013  
Design Manager: ERICA ZAKAMAREK  
LEED AP: LEED AP  
Production Designer: NORR  
Checked by: NORR

Sheet Title:  
**PENETRATION PLAN**

Scale: As indicated

Sheet Number:  
**I-113**