

# BSB MIDDLE ST

PORTLAND, MAINE

## INDEX

|                        |   |
|------------------------|---|
| GENERAL DRAWINGS       |   |
| GI002                  | SYMBOLS AND ABBREVIATIONS               |
| GI001                  | COVER SHEET                             |
| ARCHITECTURAL DRAWINGS |   |
| AE101                  | REMOVAL & FIRST FLOOR PLANS             |
| AE102                  | REFLECTED CEILING & FINISH PLANS        |
| AE201                  | ENLARGED PLAN OF TELLERLINE AND DETAILS |
| ELECTRICAL             |   |
| E-101                  | FIRST FLOOR LIGHTING PLAN               |
| E-401                  | ENLARGED LIGHTING PLAN                  |

CON DOC'S  
04.16.10

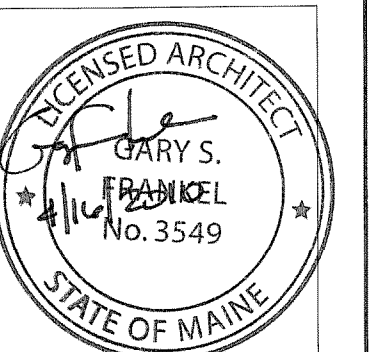
| Signature   | Date  | Rev. | Description | Date |
|-------------|-------|------|-------------|------|
| Owner:      | _____ |      |             |      |
| Architect:  | _____ |      |             |      |
| Contractor: | _____ |      |             |      |

**WBRC**   
ARCHITECTS • ENGINEERS

BANGOR, MAINE  
(207) 947-4511  
PORTLAND, MAINE  
(207) 828-4511  
SARASOTA, FLORIDA  
(941) 556-0757  
WWW.WBRCAE.COM

SHEET No.  
GI001

COMM No.  
2747.95

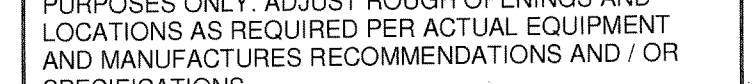


| SYMBOLS | HATCH PATTERNS |
|---------|----------------|
|         |                |
|         |                |
|         |                |
|         |                |
|         |                |
|         |                |
|         |                |
|         |                |
|         |                |
|         |                |
|         |                |
|         |                |
|         |                |
|         |                |
|         |                |
|         |                |
|         |                |
|         |                |
|         |                |
|         |                |
|         |                |
|         |                |
|         |                |
|         |                |
|         |                |
|         |                |
|         |                |
|         |                |
|         |                |
|         |                |
|         |                |
|         |                |
|         |                |
|         |                |
|         |                |
|         |                |
|         |                |
|         |                |
|         |                |
|         |                |
|         |                |
|         |                |
|         |                |
|         |                |
|         |                |
|         |                |
|         |                |
|         |                |
|         |                |
|         |                |
|         |                |
|         |                |
|         |                |
|         |                |
|         |                |
|         |                |
|         |                |
|         |                |
|         |                |
|         |                |
|         |                |
|         |                |
|         |                |
|         |                |
|         |                |
|         |                |
|         |                |
|         |                |
|         |                |
|         |                |
|         |                |
|         |                |
|         |                |
|         |                |
|         |                |
|         |                |
|         |                |
|         |                |
|         |                |
|         |                |
|         |                |
|         |                |
|         |                |
|         |                |
|         |                |
|         |                |
|         |                |
|         |                |
|         |                |
|         |                |
|         |                |
|         |                |
|         |                |
|         |                |
|         |                |
|         |                |
|         |                |
|         |                |
|         |                |
|         |                |
|         |                |
|         |                |
|         |                |
|         |                |
|         |                |
|         |                |
|         |                |
|         |                |
|         |                |
|         |                |
|         |                |
|         |                |
|         |                |
|         |                |
|         |                |
|         |                |
|         |                |
|         |                |
|         |                |
|         |                |
|         |                |
|         |                |
|         |                |
|         |                |
|         |                |
|         |                |
|         |                |
|         |                |
|         |                |
|         |                |
|         |                |
|         |                |
|         |                |
|         |                |
|         |                |
|         |                |
|         |                |
|         |                |
|         |                |
|         |                |
|         |                |
|         |                |
|         |                |
|         |                |
|         |                |
|         |                |
|         |                |
|         |                |
|         |                |
|         |                |
|         |                |
|         |                |
|         |                |
|         |                |
|         |                |
|         |                |
|         |                |
|         |                |
|         |                |
|         |                |
|         |                |
|         |                |
|         |                |
|         |                |
|         |                |
|         |                |
|         |                |
|         |                |
|         |                |
|         |                |
|         |                |
|         |                |
|         |                |
|         |                |
|         |                |
|         |                |
|         |                |
|         |                |
|         |                |
|         |                |
|         |                |
|         |                |
|         |                |
|         |                |
|         |                |
|         |                |
|         |                |
|         |                |
|         |                |
|         |                |
|         |                |
|         |                |
|         |                |
|         |                |
|         |                |
|         |                |
|         |                |
|         |                |
|         |                |
|         |                |
|         |                |
|         |                |

- GENERAL NOTES:**
- ALL WALL PARTITION TYPES ARE M1 UNLESS NOTED OTHERWISE.
  - REFERENCE ARCHITECTURAL ABBREVIATIONS AND SYMBOLS THIS SHEET FOR ALL ABBREVIATIONS AND SYMBOLS USED IN THESE CONSTRUCTION DOCUMENTS.
  - REFER TO ALL DRAWINGS INCLUDING: ARCHITECTURAL AND ELECTRICAL FOR ADDITIONAL GENERAL NOTES, ABBREVIATIONS, AND SYMBOLS.
  - VERIFY ALL OPENINGS FOR EQUIPMENT SIZES PER MANUFACTURERS RECOMMENDATIONS IN FIELD. LOCATION AND SIZES SHOWN ARE FOR INTENT PURPOSES ONLY. ADJUST ROUGH OPENINGS AND LOCATIONS AS REQUIRED PER ACTUAL EQUIPMENT AND MANUFACTURERS RECOMMENDATIONS AND / OR SPECIFICATIONS.
  - DOOR SIDE OF ALL JAMBS ARE 4" MIN. FROM NEAREST ADJACENT INTERSECTING PARTITION UNLESS NOTED OTHERWISE.
  - G.C. TO PROVIDE & INSTALL ALL IN-WALL OR IN-CEILING BLOCKING AND / OR BRACING AS REQUIRED. FOR ALL BUILDING COMPONENTS WHETHER BY G.C. OR BY OTHERS.
  - G.C. SHALL BE RESPONSIBLE FOR LAYING OUT THE SPACE PRIOR TO COMMENCING WITH WORK AND SHALL NOTIFY THE ARCHITECT AND OWNER OF ANY DISCREPANCIES PRIOR TO ANY INSTALLATION.
  - ALL INTERIOR DIMENSIONS ARE TO FACE OF STUD AND MASONRY UNLESS SPECIFICALLY NOTED OTHERWISE.
  - ALL MECHANICAL, ELECTRICAL, AND PLUMBING PENETRATIONS THROUGH FIRE RATED CONSTRUCTION SHALL BE SLEEVED, FIRE SAFED AND / OR HAVE FIRE DAMPERS EQUIVALENT TO THE HOURLY FIRE RATING OF THE CONSTRUCTION.
  - DO NOT SCALE DRAWINGS, THE DRAWINGS ARE NOT NECESSARILY TO SCALE - USE GIVEN DIMENSIONS. CONTRACTOR SHALL FIELD VERIFY ALL CONDITIONS AND DIMENSIONS AT THE JOB SITE PRIOR TO THE START OF CONSTRUCTION AND SHALL NOTIFY ARCHITECT OF ANY DISCREPANCIES FOUND PRIOR TO COMMENCING THE WORK.
  - DETAILS NOT SHOWN ARE SIMILAR IN CHARACTER TO THOSE SHOWN, WHERE SPECIFIC DIMENSIONS, DETAILS, OR DESIGN INTENT CANNOT BE DETERMINED CONSULT ARCHITECT PRIOR TO PROCEEDING WITH THE WORK.
  - INSTALL ALL RECESSED CABINETS, PANELS, BOXES LOCATED IN FIRE-RATED PARTITIONS SO AS TO MAINTAIN RATING OF THE CONSTRUCTION IN WHICH THE ITEM IS INSTALLED.
  - REFER TO MANUFACTURERS TEMPLATE DRAWINGS FOR ALL MECHANICAL AND ELECTRICAL EQUIPMENT SUPPORTS, BOLT SETTING LOCATIONS, ISOLATION SUPPORTS AND SPRING ISOLATION, ETC. NOT SHOWN ON THE DRAWINGS.
  - ALL DRAWINGS ARE OF EQUAL IMPORTANCE IN DEFINING THE SCOPE OF WORK DESCRIBED HERE IN. CONTRACTOR SHALL REVIEW ALL PERTINENT DRAWINGS AND / OR DOCUMENTS PRIOR TO COMMENCEMENT OF ANY WORK. SHOULD A DISCREPANCY WITHIN AND OR BETWEEN ANY DRAWINGS BE FOUND, CONTRACTOR SHALL NOTIFY THE ARCHITECT.

| REV. | DESCRIPTION | DATE     |
|------|-------------|----------|
|      | CON DOC'S   | 04.16.10 |

CURRENT ISSUE STATUS:



**WBRC**  
ARCHITECTS - ENGINEERS  
WWW.WBRC.AE.COM  
BANGOR, MAINE 207-947-4511  
PORTLAND, MAINE 207-828-4511  
SARASOTA, FLORIDA 941-556-0757

PROJECT: PORTLAND, MAINE

**SYMBOLS AND ABBREVIATIONS**

SHEET TITLE: WBRC CAD FILE: C:\Revit Local Files\2747.95 BSB MIDDLE ST\_keth.jewell.rvt

PROJECT No. 2747.95 GRAPHIC SCALE: 1" = 1'-0"

SCALE: As indicated

PK: Checker SHEET No.

DRAWN BY: Author

APPROVED BY: Approver

DATE OF RECORD: 11/11/10

G1002

4/16/2010 4:18:56 PM C:\Revit Local Files\2747.95 BSB MIDDLE ST\_keth.jewell.rvt

**ARCHITECTURAL ABBREVIATIONS**

12" = 1'-0"

**DRAWING AREA**

12" = 1'-0"

NOTE: REFER TO STRUCTURAL, MECHANICAL, AND/OR ELECTRICAL DRAWINGS FOR ABBREVIATIONS SPECIFIC TO EACH DISCIPLINE



**HARDWARE SCHEDULE (QUANTITIES GIVEN ARE PER OPENING/HARDWARE SET)**

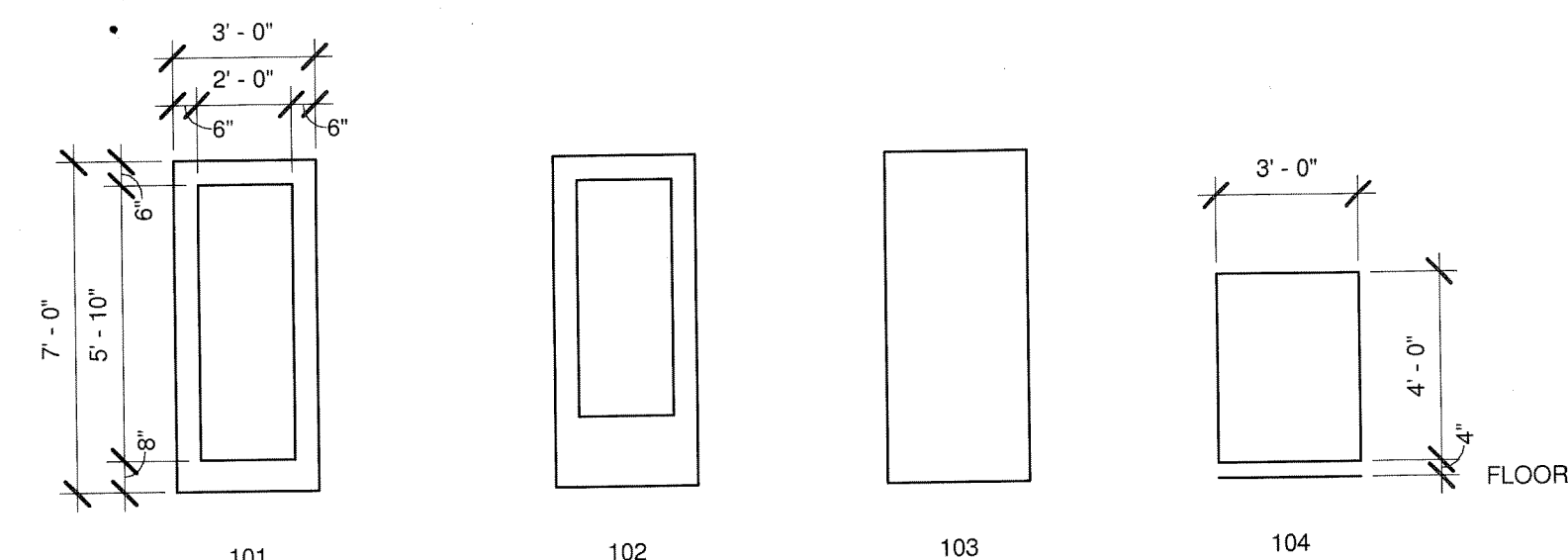
| DESCRIPTION  | MNFR.    | MODEL No.    | FINISH |
|--|----------|--------------|--------|
| <b>SET 1</b>   |          |              |        |
| HARDWARE CONDITION TO BE FIELD VERIFIED - NOTIFY ARCHITECT IF UNACCEPTABLE |          |              |        |
| <b>SET 2</b>   |          |              |        |
| HINGE (2 EACH)   | IVES     | 3SB1 4.5X4.5 | 652    |
| CYLINDER (1 EACH)  | SCHLAGE  | AS REQUIRED  | 626    |
| CARD READER (1 EACH)   | BY OWNER | BY OWNER     |        |
| WALL STOP (1 EACH)   | IVES     | WS407CCV     | 630    |
| <b>SET 3</b>   |          |              |        |
| HINGE (3 EACH)   | IVES     | 5BB1 4.5X4.5 | 652    |
| PASSAGE SET (1 EACH)   | SCHLAGE  | ND10S SPA    | 626    |
| DOOR STOP (1 EACH)   | IVES     | FS436        | 626    |

**HARDWARE SCHEDULE GENERAL NOTES:**

- ALL DOOR HARDWARE/HANDLES TO BE ADA COMPLIANT
- THE LEVER HANDLE ON THE EGRESS SIDE OF THE DOOR SHALL ALWAYS BE UNLOCKED
- DOOR HARDWARE AT EXIT DOORS SHALL NOT BE SUBJECT TO THE USE OF A KEY OR REQUIRE SPECIAL KNOWLEDGE TO OPERATE

**H1 HARDWARE SCHEDULE**

6" = 1'-0"

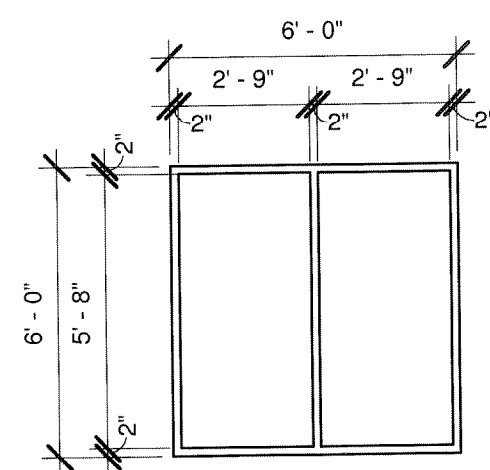


**OFFICE DOOR:**  
WOOD CHERRY DOOR WITH HOLLOW METAL FRAME PAINTED (PT-3) HARDWARE SET #3

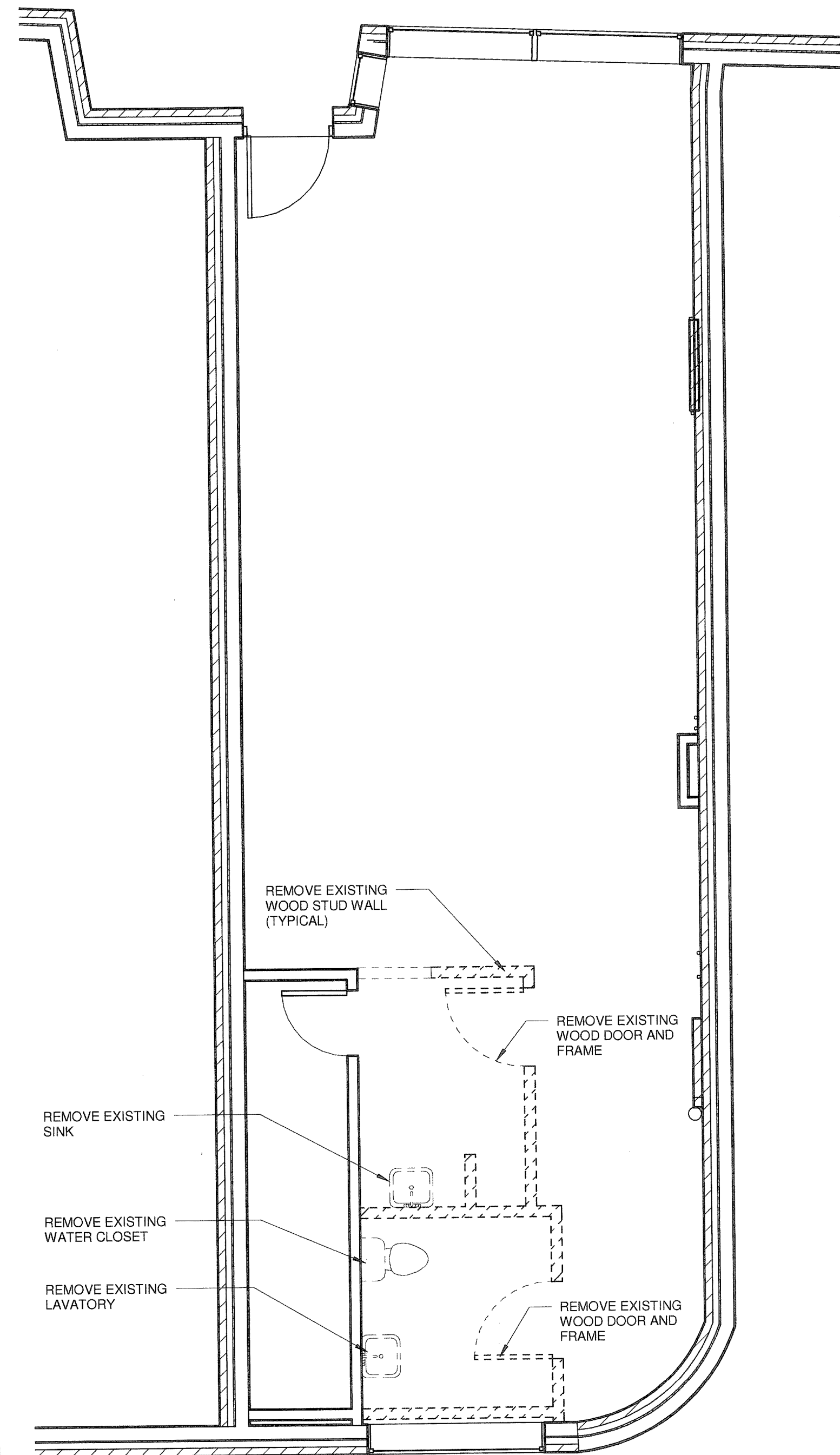
**ENTRY DOOR:**  
EXISTING DOOR AND FRAME TO BE STRIPPED AND REPAINTED TO MATCH EXTERIOR COLOR STRIPPED, HARDWARE SET #1

**BASEMENT DOOR:**  
EXISTING DOOR AND FRAME TO BE STRIPPED AND REPAINTED, DOOR (PT-1), FRAME (PT-3), HARDWARE SET #1

**TELLER DOOR:**  
CHERRY WOOD DOOR, WOOD FRAME (PT-3), HARDWARE SET #2



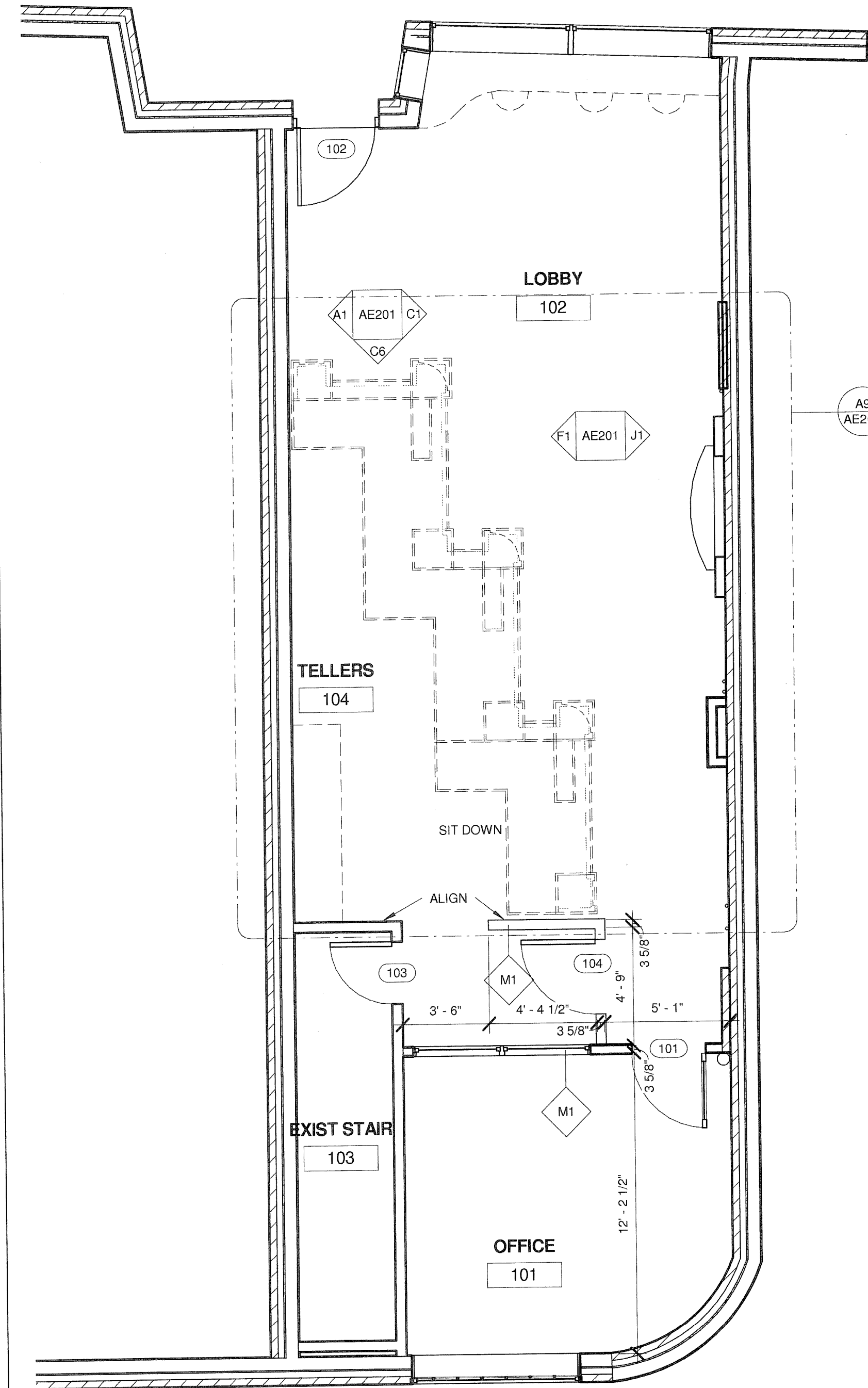
**OFFICE WINDOW:**  
HOLLOW METAL FRAME PAINTED (PT-3), TEMPERED GLAZING



- REMOVE EXISTING SINK
- REMOVE EXISTING WATER CLOSET
- REMOVE EXISTING LAVATORY

**A5 DEMOLITION PLAN**

1/4" = 1'-0"



**A10 LEVEL 1 - NEW**

1/4" = 1'-0"

FOR GENERAL PLAN NOTES, ABBREVIATIONS, AND SYMBOLS REFER TO SHEET G1002

| REV. | DESCRIPTION | DATE     |
|------|-------------|----------|
|      | CON DOC'S   | 04.16.10 |

PLAN NORTH  
MAG NORTH

LICENSED ARCHITECT  
GREGORY S. FERRARESE  
No. 3549  
STATE OF MAINE

**WBRC**  
ARCHITECTS • ENGINEERS  
WWW.WBRCAE.COM  
BANGOR, MAINE 207-947-4511  
PORTLAND, MAINE 207-828-4511  
SARASOTA, FLORIDA 941-556-0757

PROJECT: BSB MIDDLE ST  
PORTLAND, MAINE  
**REMOVAL & FIRST FLOOR PLANS**

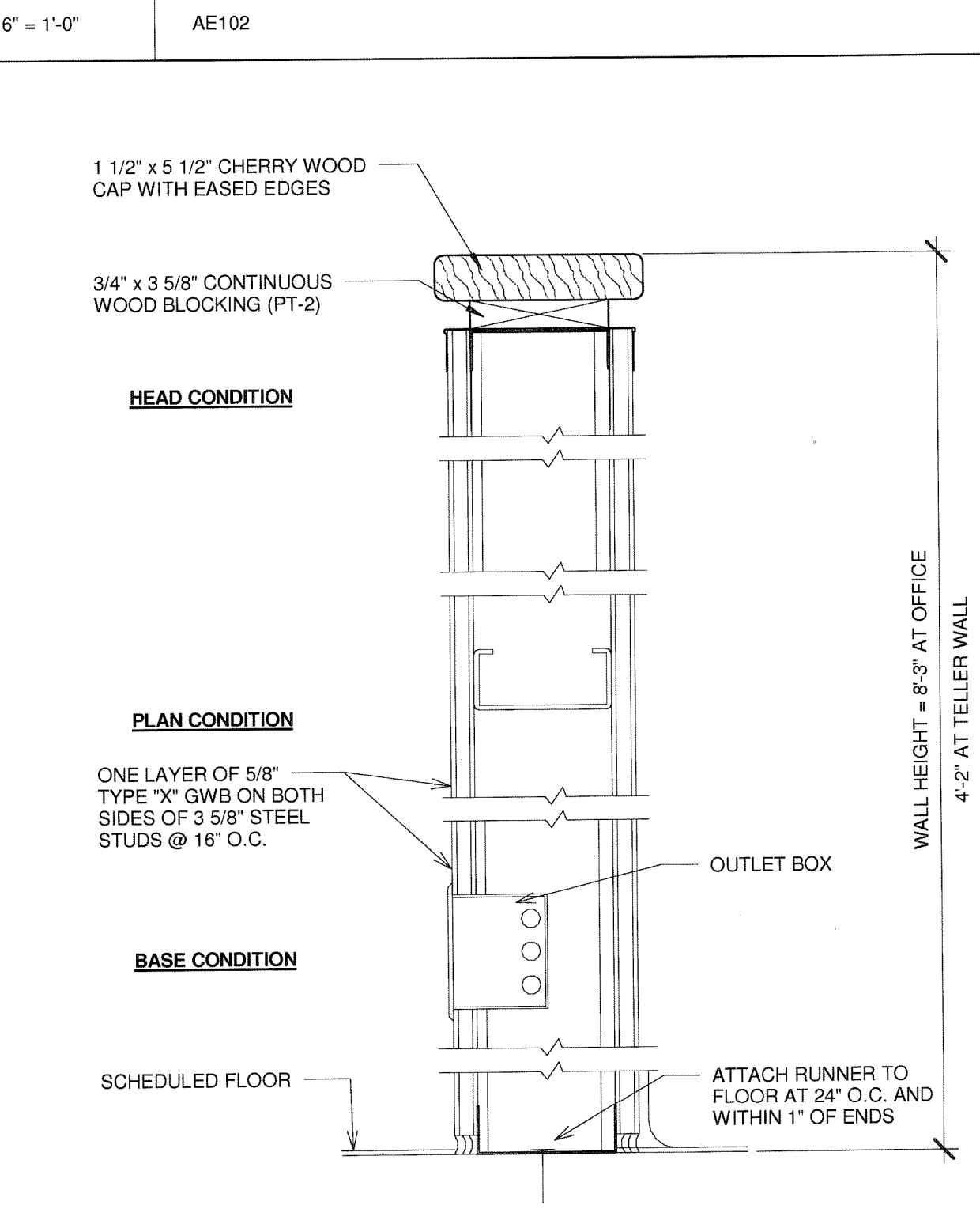
|                |              |                |       |
|----------------|--------------|----------------|-------|
| PROJECT No:    | 2747.95      | GRAPHIC SCALE: | 0"    |
| SCALE:         | As indicated | SHEET No.:     | AE101 |
| FILE:          | DCM          | APPROVER:      | JLK   |
| DRAWN BY:      | JLK          |                |       |
| A/E OF RECORD: | Approver     |                |       |

**A1 DOOR AND WINDOW TYPES**

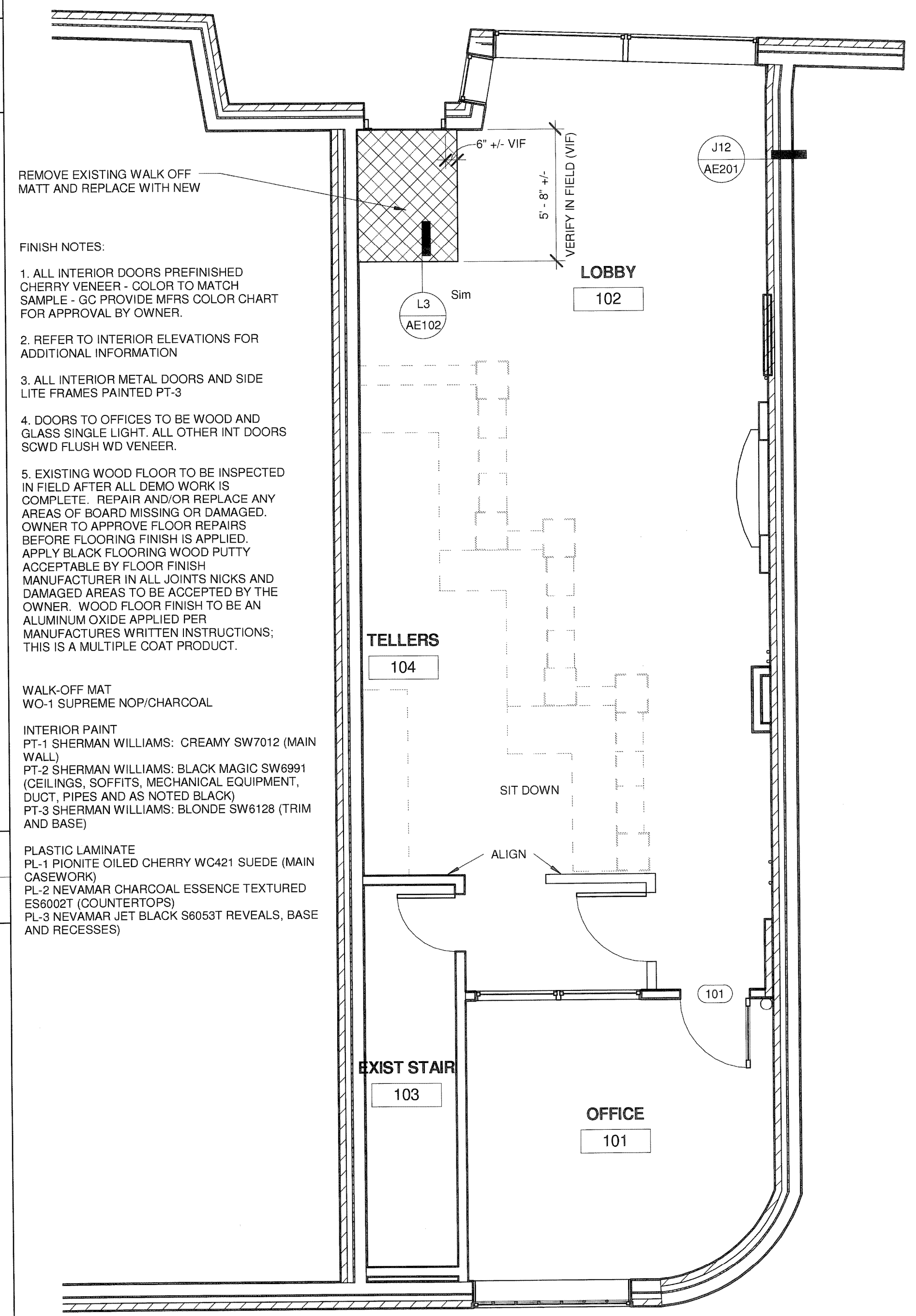
1/4" = 1'-0"

1. REFER TO SHEET G1002 FOR ALL ABBREVIATIONS
2. ALL HEIGHTS GIVEN ARE FROM FINISHED FLOOR OF BUILDING
3. CONTRACTOR TO VERIFY LOCATION OF EXISTING MECHANICAL EQUIPMENT BEFORE PROCEEDING WITH FIXTURE INSTALLATION. NOTIFY ARCHITECT OF INTERFERENCES
4. NOTIFY ARCHITECT OF ANY DISCREPANCIES BETWEEN ARCHITECTURAL REFLECTED CEILING PLANS AND ELECTRICAL LIGHTING PLANS PRIOR TO CONSTRUCTION
5. REFER TO ELECTRICAL PLANS FOR LOCATION OF STROBES AND EXIT SIGNS
6. ALL CEILING GRILLES, TRIM EDGES, AND SLOT DIFFUSERS TO PT-2.
7. SEE ELECTRICAL SHEETS FOR ADDITIONAL INFORMATION.
8. ALL LIGHT FIXTURES IN FRONT OF CEILING PANELS TO BE LOCATED IN SAME ARRANGEMENT TO EVERY PANEL UNLESS NOTED OTHERWISE.

**L3 FLOOR FINISH TRANSITION**

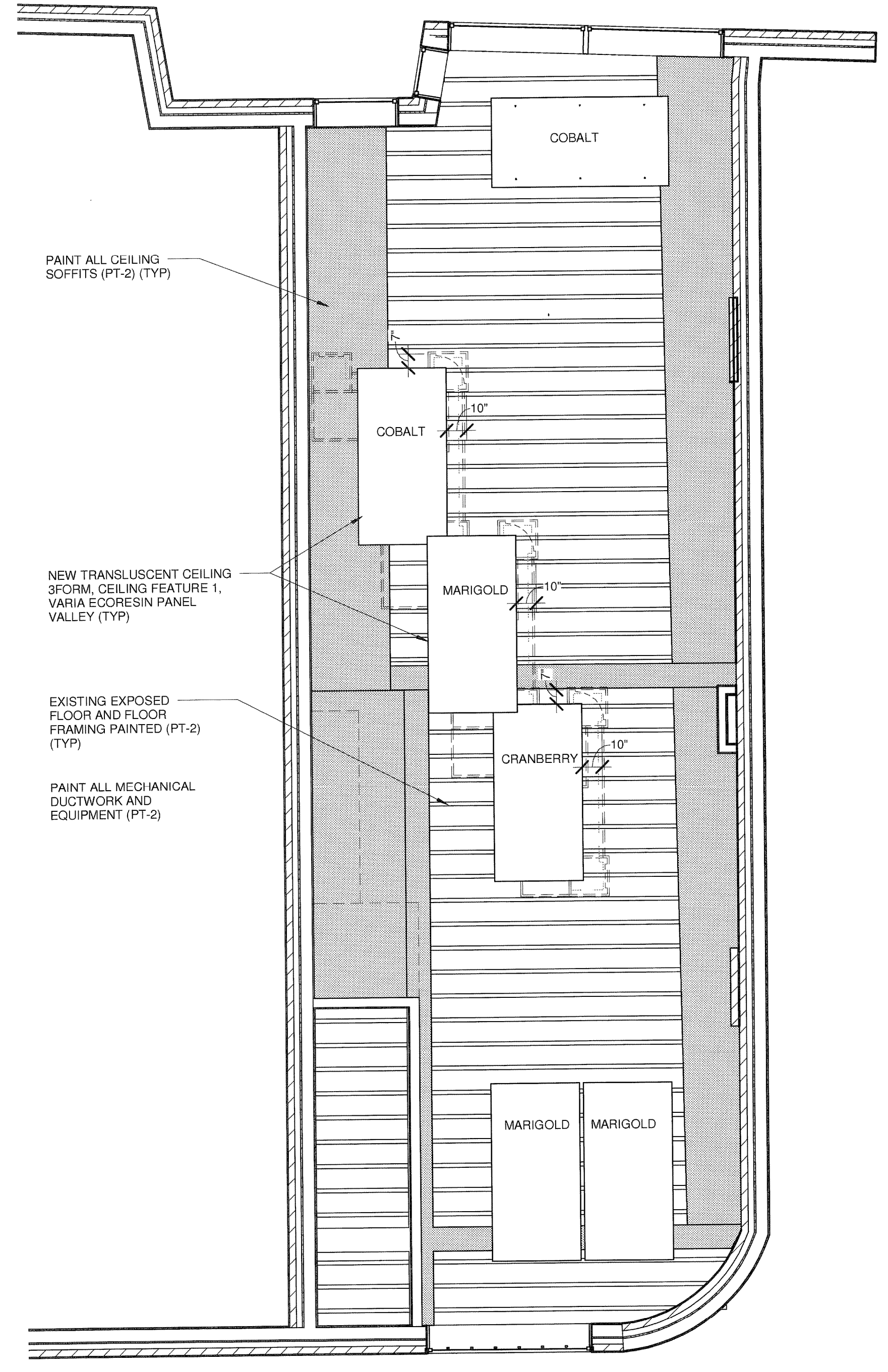


**F1 WALL TYPE - M1**



**J5 FINISHES PLAN**

1/4" = 1'-0"

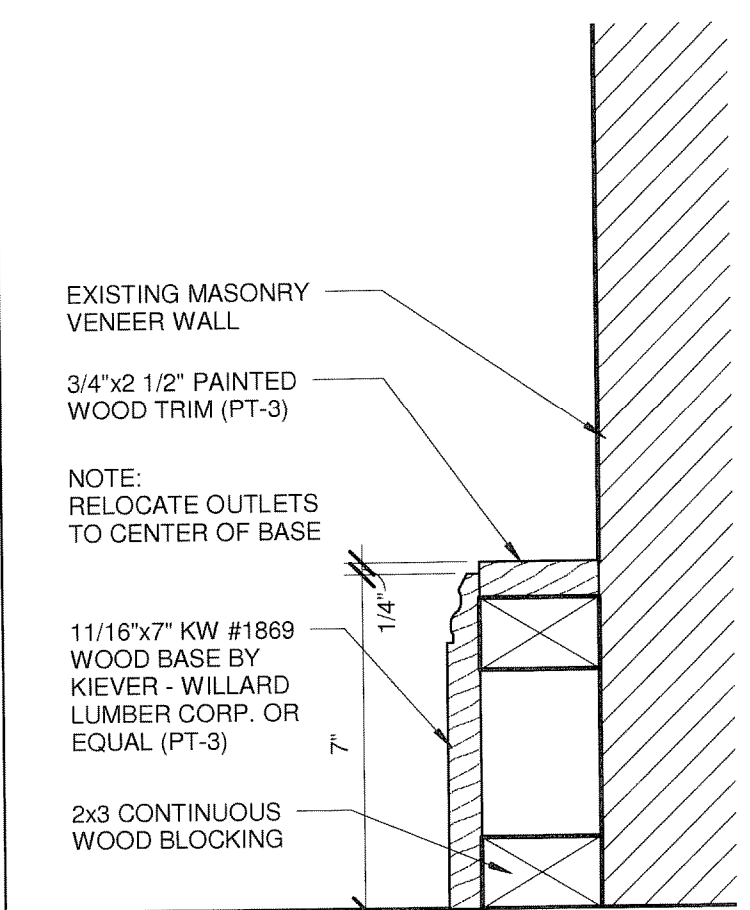
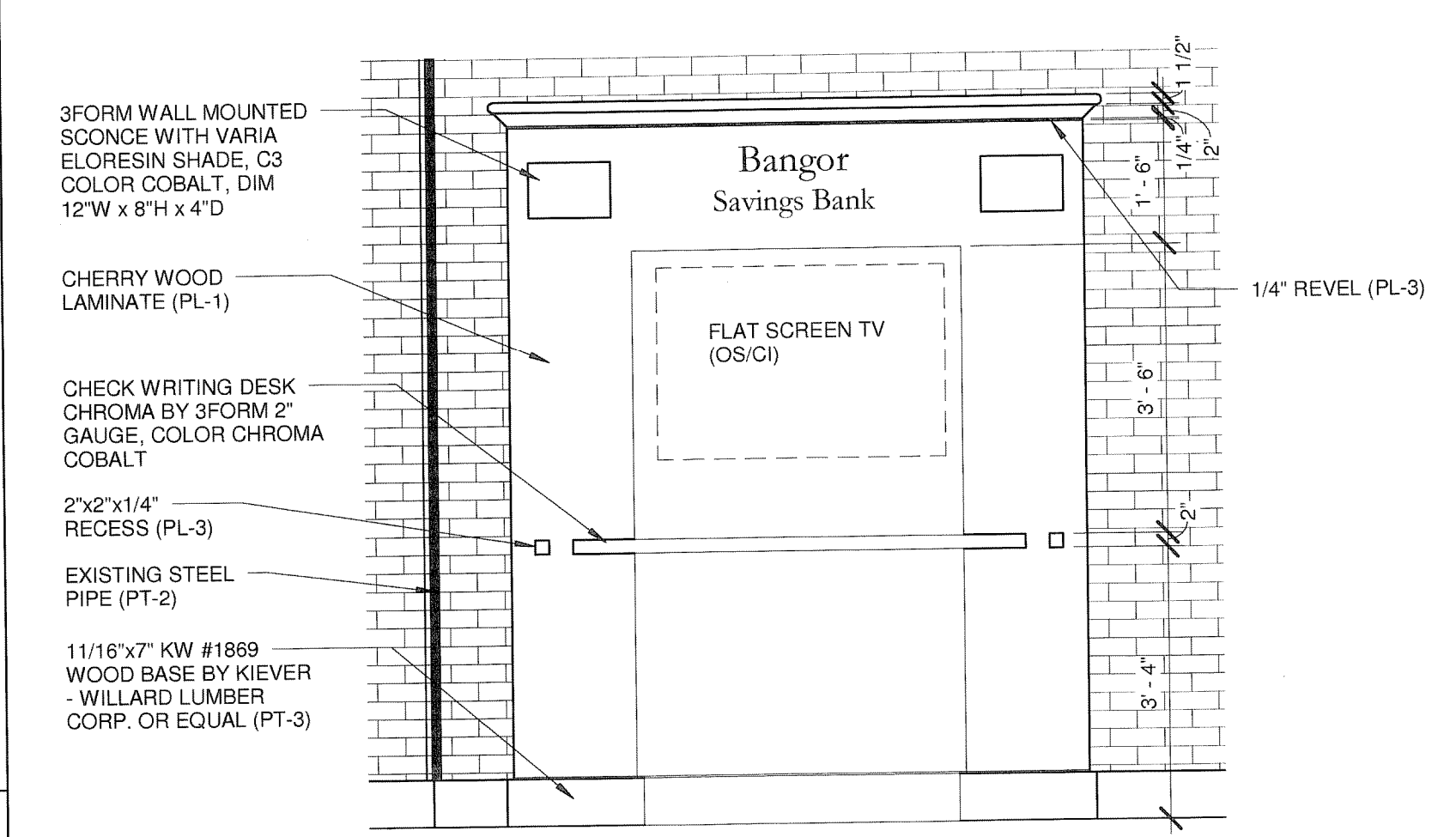
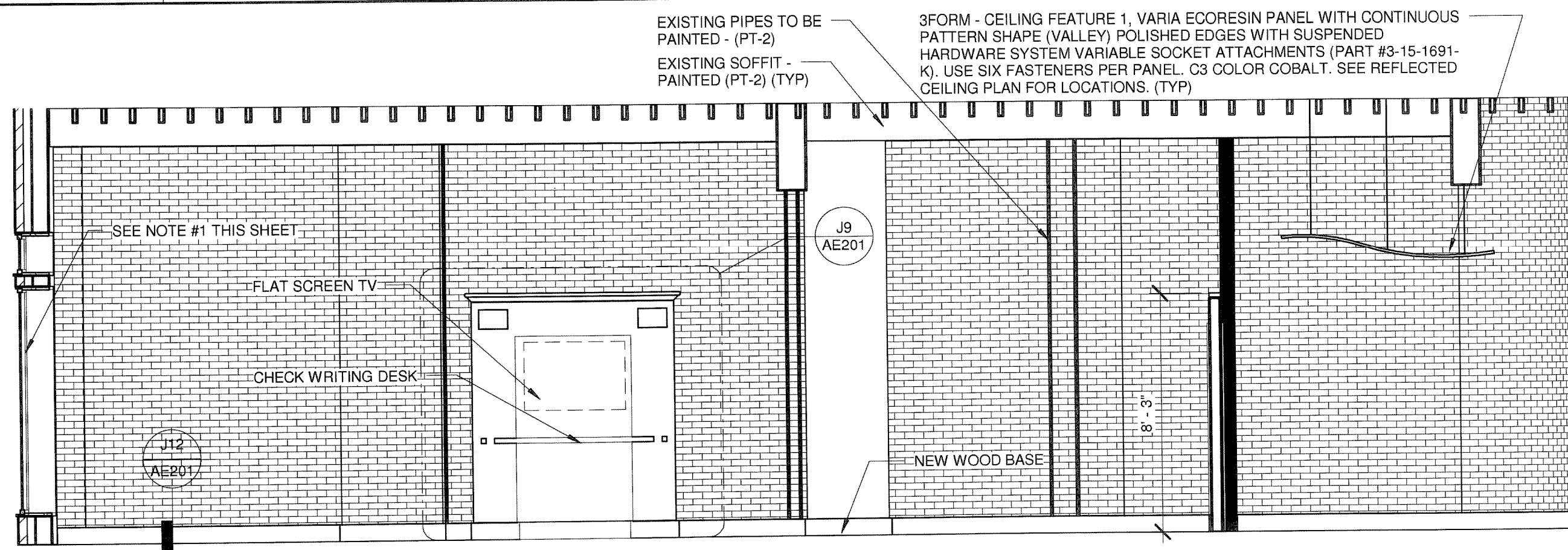


**J10 REFLECTED CEILING PLAN**

1/4" = 1'-0"

| REV.  | DESCRIPTION         | DATE   |
|---|---------------------|--|
|   | CON DOC'S           | 04.16.10   |
| CURRENT ISSUE STATUS:   |                     |  |
| PLAN NORTH<br>N   | MAG NORTH           | LICENSED ARCHITECT<br>GARY P. HANKEL<br>No. 3549<br>STATE OF MAINE |
| <b>WBRC</b><br>ARCHITECTS • ENGINEERS<br>WWW.WBRCAE.COM<br>BANGOR, MAINE 207-947-4511<br>PORTLAND, MAINE 207-828-4511<br>SARASOTA, FLORIDA 941-556-0757 |                     |  |
| PROJECT: BSB MIDDLE ST<br>PORTLAND, MAINE   |                     |  |
| REFLECTED CEILING & FINISH PLANS  |                     |  |
| SHEET TITLE:  |                     |  |
| WBRC CAD FILE: C:\Pw\Local Files\2747.95 BSB MIDDLE ST.kitth.jewell.rvt   | PROJECT No. 2747.95 | GRAPHIC SCALE: 0' 1'   |
| SCALE: As indicated   | PM: DCM             | SHEET No. AE102  |
| DRAWN BY: JLK   | APPROVER: JLK       |  |
| DATE OF RECORD: 15  |                     |  |





GENERAL NOTES:

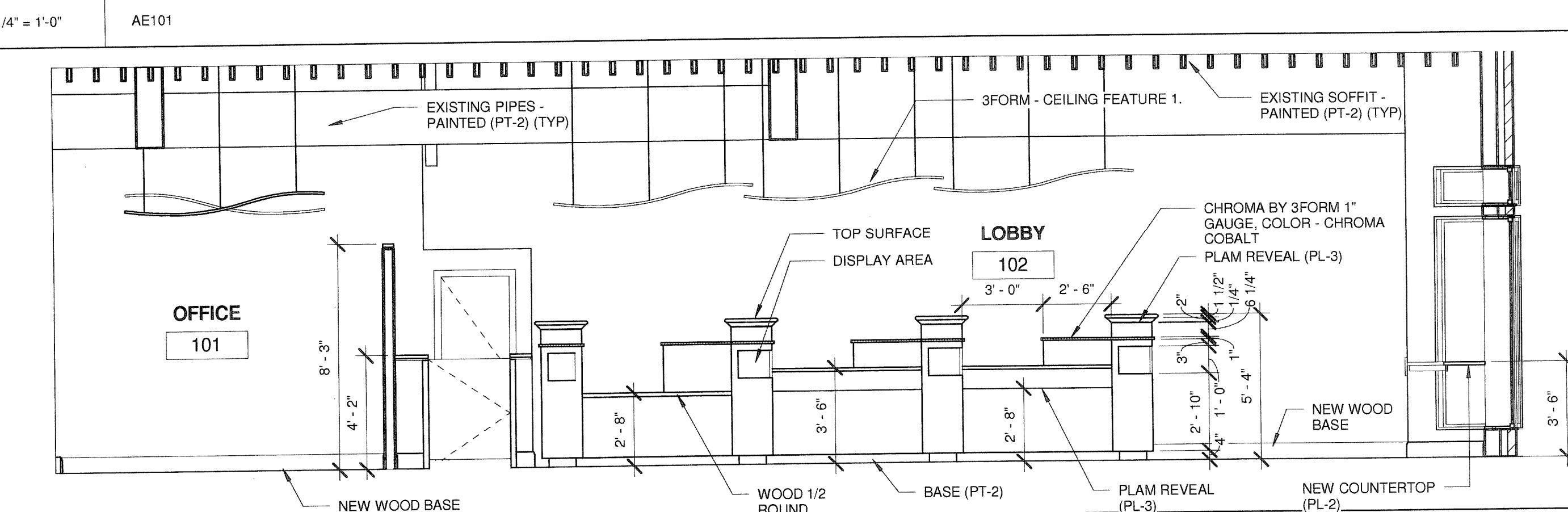
1. EXISTING WINDOW SYSTEM TO BE RE-GLAZED IN FIELD AFTER CONTRACTOR FIELD VERIFIES CONDITION OF WOOD. EXISTING GLAZING TO BE REMOVED CAREFULLY FROM THE INSIDE BY TAKING SPECIAL CARE NOT TO DAMAGE THE EXTERIOR WOOD PROFILES. IF MATERIAL IS ROTTED OR DAMAGED REWORK OR REPLACE TO MATCH EXISTING PROFILES. WORK NEW INSULATED-GLASS UNIT FROM THE INSIDE. REPLACE ALL STOPS, SEALANT AND/OR OTHER MATERIAL NEEDED FOR THE NEW GLAZING. INTERIOR MATERIAL CAN BE REUSED OR REPLACED WITH SAME PROFILE. REWORK AS NEED TO ACCOMMODATE INSULATED-GLASS UNIT. INTERIOR FRAME MEMBERS TO BE PT3 AND ALL EXTERIOR FRAME MEMBERS TO BE PAINTED TO MATCH EXISTING.

INSULATED-GLASS UNIT: ONE INCH WITH QUARTER INCH THICK CLEAR LITE FULLY TEMPERED. INTERSPACE CONTENT TO BE AGON WITH LOW-E SPUTTERED ON SECOND SURFACE.

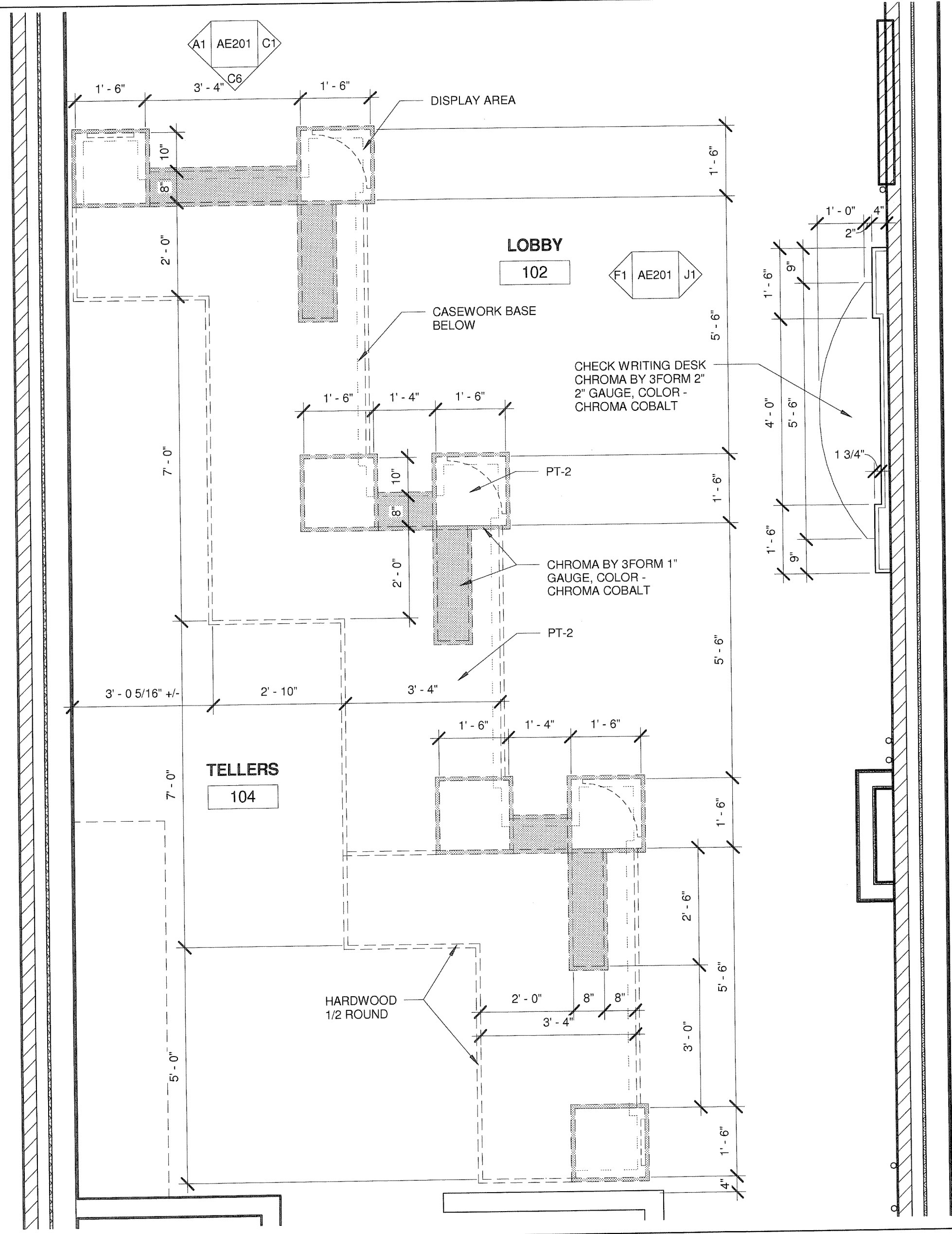
J1 INTERIOR ELEVATION

J9 CHECK WRITING DESK

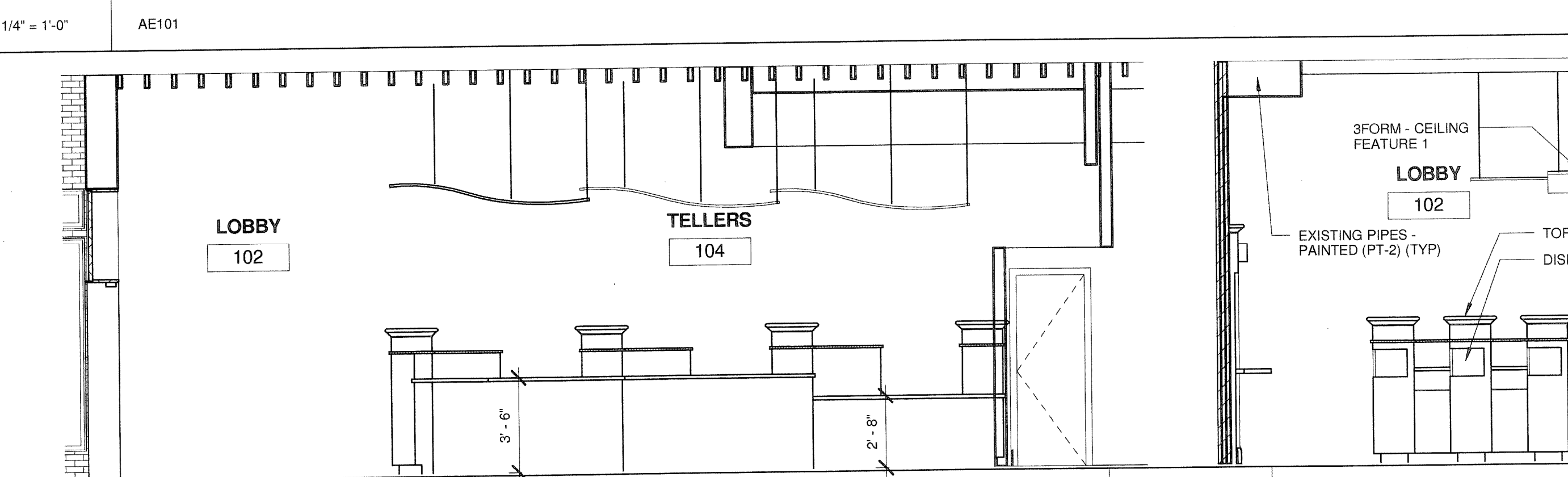
J12 BASE DETAIL



F1 INTERIOR ELEVATION - TELLERLINE

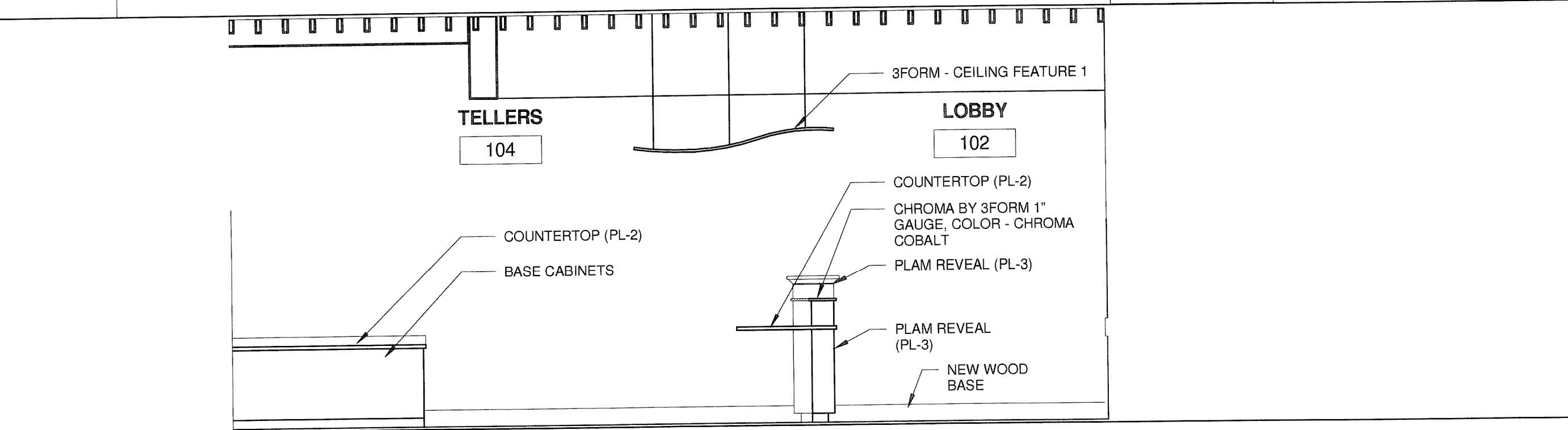


A9 ENLARGED PLAN - TELLERLINE



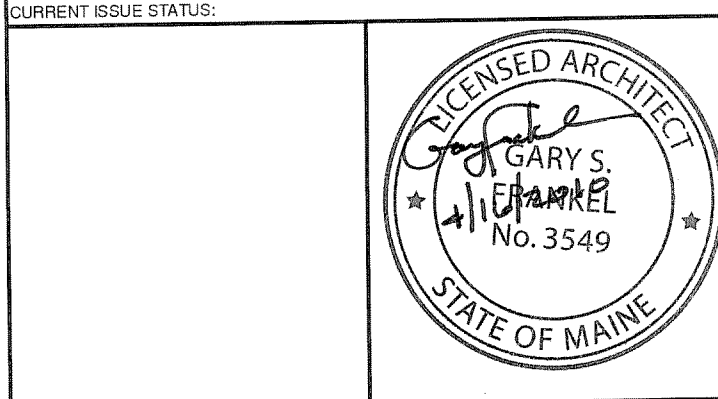
C1 INTERIOR ELEVATION - TELLERLINE

C6 INTERIOR ELEVATION - TELLERLINE



A1 INTERIOR ELEVATION

| REV. | DESCRIPTION | DATE     |
|------|-------------|----------|
|      | CON DOC'S   | 04.16.10 |



**WBRC**  
ARCHITECTS - ENGINEERS  
WWW.WBRCAE.COM  
BANGOR, MAINE 207-947-4511  
PORTLAND, MAINE 207-828-4511  
SARASOTA, FLORIDA 941-556-0757

BSB MIDDLE ST

PORTLAND, MAINE

ENLARGED PLAN OF TELLERLINE AND DETAILS

|                |              |   |         |
|----------------|--------------|---|---------|
| SHEET TITLE:   |              | WBRC CAD FILE: C:\Revit Local Files\2747.95 BSB MIDDLE ST_xeth.jewell.rvt |         |
| PROJECT No:    | 2747.95      | GRAPHIC SCALE:  | 1" = 0' |
| SCALE:         | As Indicated | SHEET No:   | AE201   |
| PM:            | Checker      |   |         |
| DRAWN BY:      | Author       |   |         |
| A/E OF RECORD: | Approver     |   |         |

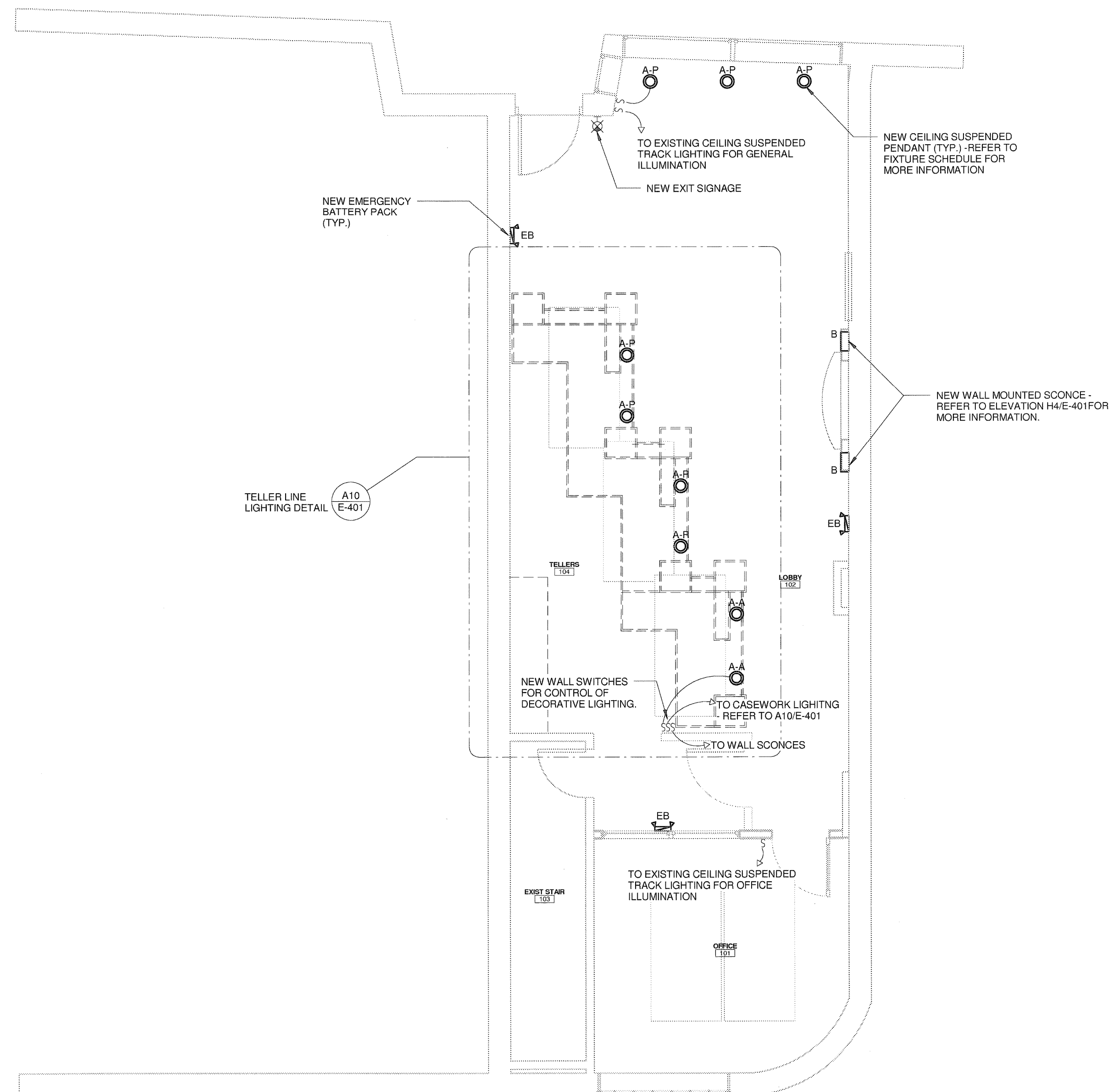
4/16/2010 4:18:58 PM C:\Revit Local Files\2747.95 BSB MIDDLE ST\_xeth.jewell.rvt

**LIGHT FIXTURE SCHEDULE**

| TYPE                   | DESCRIPTION                      | SIZE    | MANUFACTURER CAT. NO.                 | LENS/LOUVER | LAMPS              | BALLASTS                  | WATTS PER FIXTURE | VOLT.            | NOTES  |
|------------------------|----------------------------------|---------|---------------------------------------|-------------|--------------------|---------------------------|-------------------|------------------|--|
| A                      | CEILING SUSPENDED PENDANT        | 4" DIA. | TECH LIGHTING<br>700FJCON Z/700FJSJ4Z | GLASS SHADE | (1) 50W<br>HALOGEN | ELECTRONIC<br>TRANSFORMER | 50                | 120VAC/<br>12VDC | MOUNT @ 8'-0" AFF TO BOTTOM, UNLESS NOTED OTHERWISE. GLASS COLOR INDICATED BY "X" SUFFIX ADDED TO FIXTURE TYPE.    |
| B                      | 3FORM WALL SCONCE                | --      | 3FORM<br>ECO-SCONCE                   | 3FORM SHADE | (1) 40W<br>INCAND  | --                        | 50                | 120              | CONTACT 3FORM LIGHT ART DIRECTLY FOR ORDERING INFORMATION. 3FORM SHADE COLOR SHALL BE BLUE TO MATCH CEILING PANEL. |
| C                      | PORCELAIN LAMP SOCKET W/CFL BULB | --      | --                                    | --          | (1) 13W<br>CFL     | SELF<br>BALLASTED         | 13                | 120              | LAMP SOCKET AND BULB SHALL BE INSTALLED WITHIN TELLER LINE CASEWORK. COORDINATE EXACT MOUNTING LOCATIONS.          |
| EXIT SIGNAGE           | EXIT SIGNAGE                     | --      | DUAL-LITE<br>LEWSRXBA                 | RED LETTERS | LED                | --                        | --                | 120/277          |  |
| EMERGENCY BATTERY PACK | EMERGENCY BATTERY PACK           | --      | DUAL-LITE<br>LZ2-B                    | EYEBALL     | (2) 5W<br>HALOGEN  | --                        | 15                | 120/277          |  |

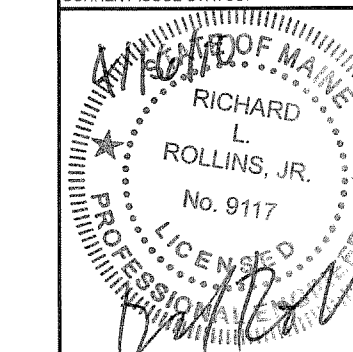
**GENERAL NOTES:**

1. CEILING SUSPENDED TRACK LIGHTING SHALL BE EXISTING TO REMAIN. READJUST TRACK HEADS AS NECESSARY TO BALANCE LIGHTING LEVELS IN ALL SPACES.
2. COORDINATE ALL POWER REQUIREMENTS FOR NEW EQUIPMENT, CASEWORK AND WALLS WITH OWNER.



CON DOCS  
04.16.10

CURRENT ISSUE STATUS:



**WBRC**  
ARCHITECTS - ENGINEERS  
WWW.WBRCAE.COM  
BANGOR, MAINE 207-947-4511  
PORTLAND, MAINE 207-828-4511  
SARASOTA, FLORIDA 941-556-0757

**BSB MIDDLE ST**

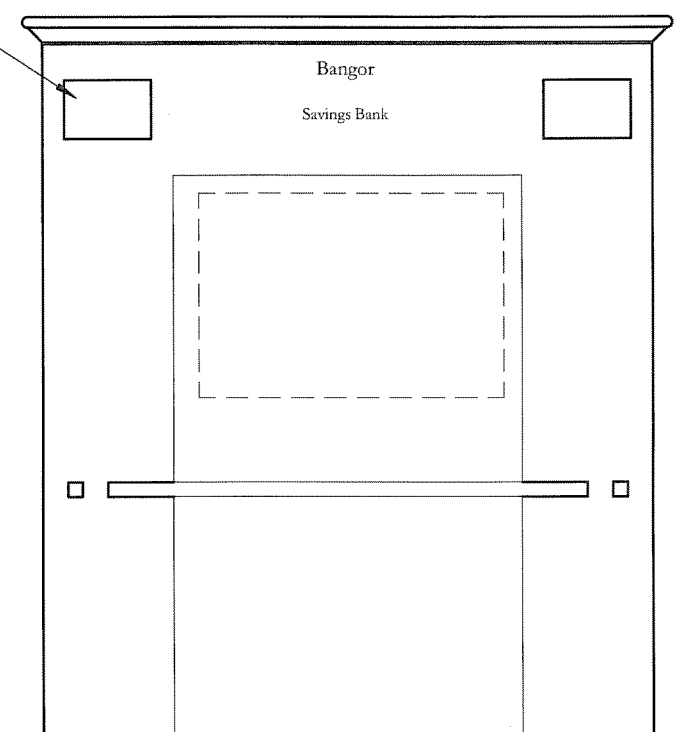
PROJECT: Enter address here

**FIRST FLOOR LIGHTING PLAN**

SHEET TITLE: C:\Documents and Settings\lrs\work\lrs\Documents\2747.95  
WBRC CAD FILE: MIDDLE ST MEP lrs.mdd.rvt  
PROJECT No: 2747.95 GRAPHIC SCALE: 1" = 1'-0"  
SCALE: 1/4" = 1'-0"  
PM: DCM SHEET No:  
DRAWN BY: LJW  
ATL OF RECORD: RLR **E-101**

4/16/2010 2:47:47 PM C:\Documents and Settings\lrs\work\lrs\Documents\2747.95\BSB MIDDLE ST MEP lrs.mdd.rvt

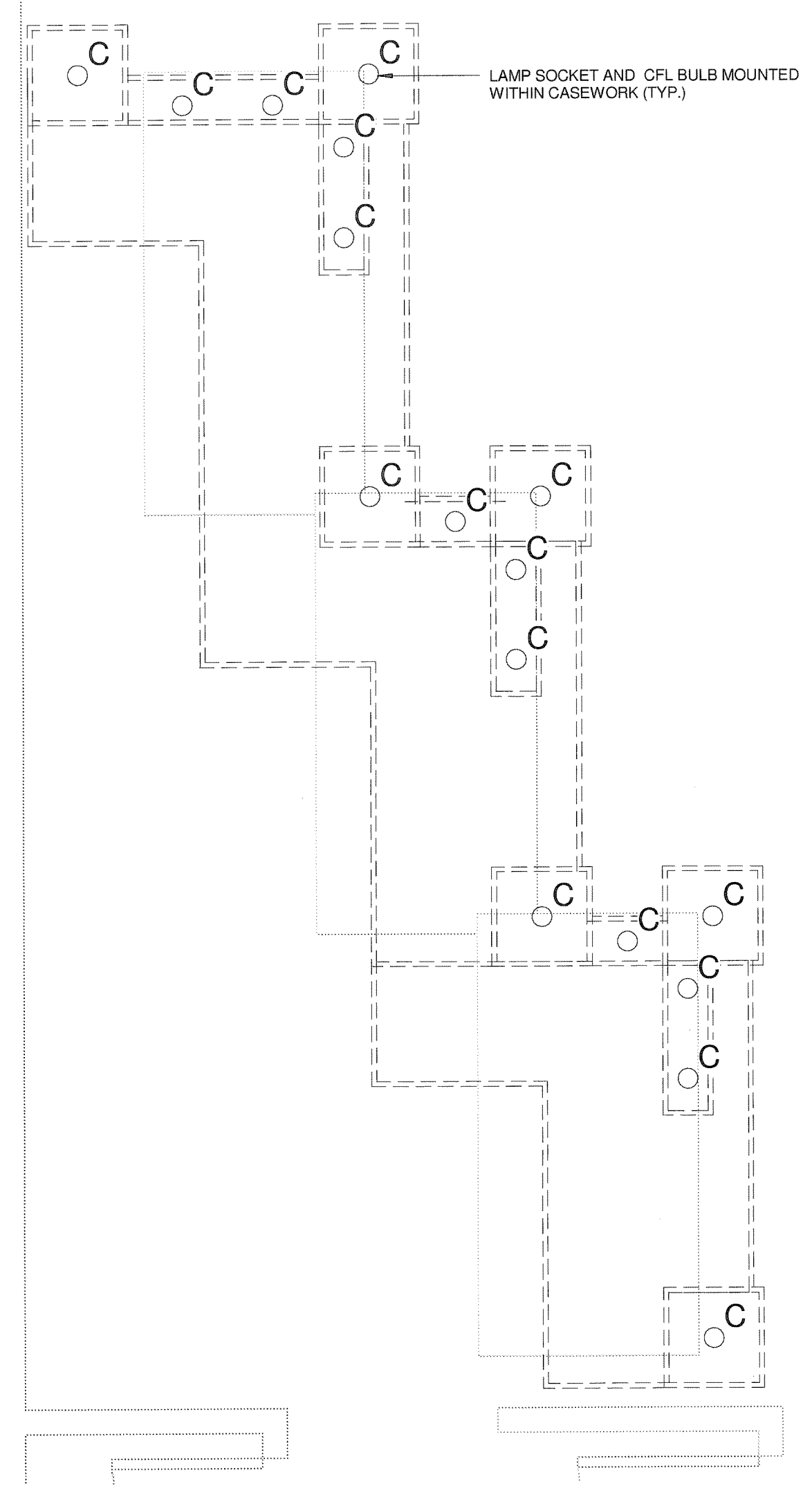
3FORM WALL MOUNTED SCONGE  
WITH VARIA ELORESIN SHADE, C3  
COLOR COBALT, DIM 12"W x 8"H x 4"D  
(TYP.)-REFER TO FIXTURE  
SCHEDULE FOR MORE INFORMATION



LEVEL 1  
0'-0"

H4 CHECK WRITING STATION ELEVATION

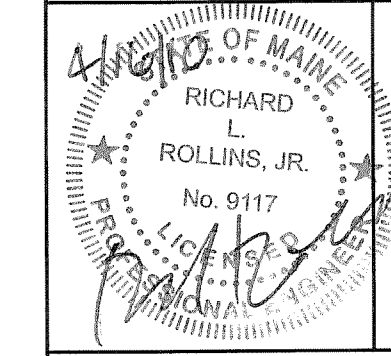
1/2" = 1'-0"



LAMP SOCKET AND CFL BULB MOUNTED  
WITHIN CASEWORK (TYP.)

| REV. | DESCRIPTION | DATE     |
|------|-------------|----------|
|      | CON DOCS    | 04.16.10 |

CURRENT ISSUE STATUS:



**WBRC**  
ARCHITECTS - ENGINEERS  
WWW.WBRC.AE.COM  
BANGOR, MAINE 207-947-4511  
PORTLAND, MAINE 207-828-4511  
SARASOTA, FLORIDA 941-556-0757

PROJECT: BSB MIDDLE ST  
Enter address here  
**ENLARGED LIGHTING  
PLANS**

SHEET TITLE: C:\Documents and Settings\lrv\My Documents\2747.95 BSB  
WBRC CAD FILE: MIDDLE ST MEP\_2747.mxd  
PROJECT No: 2747.95 GRAPHIC SCALE: 0' 1'  
SCALE: 1/2" = 1'-0"  
DCM SHEET No:  
DRAWN BY: LJW  
A/E OF RECORD: RLR **E-401**

A10 TELLER LINE LIGHTING DETAIL

1/2" = 1'-0" E-101

C:\Documents and Settings\lrv\My Documents\2747.95 BSB MIDDLE ST.dwg