

APPROVED FOR RECORD



Stantec

100 WATER STREET  
SUITE 200  
PORTLAND, ME 04101  
TEL: 603.751.5000

CLIENT  
C/O STANTEC ASSOCIATES  
150 W. 21<sup>ST</sup> STREET A  
PORTLAND, ME 04101

PROJECT  
C/O SIOUX CREDIT  
150 W. 21<sup>ST</sup> STREET  
PORTLAND, ME 04101

DATE: 11/13/13

PROJECT NO.	
DRAWING NO.	
DATE	
BY	
DATE	

NO.	REVISION	DATE

CORRESPONDENCE  
AND FOR INQUIRY GO TO:  
SIA 1100  
A-2

Schedule of Furniture, Fixtures, Equipment,  
Microfilm and Additional Items

NO.	DESCRIPTION	QUANTITY	UNIT	EST. COST
-----	-------------	----------	------	-----------

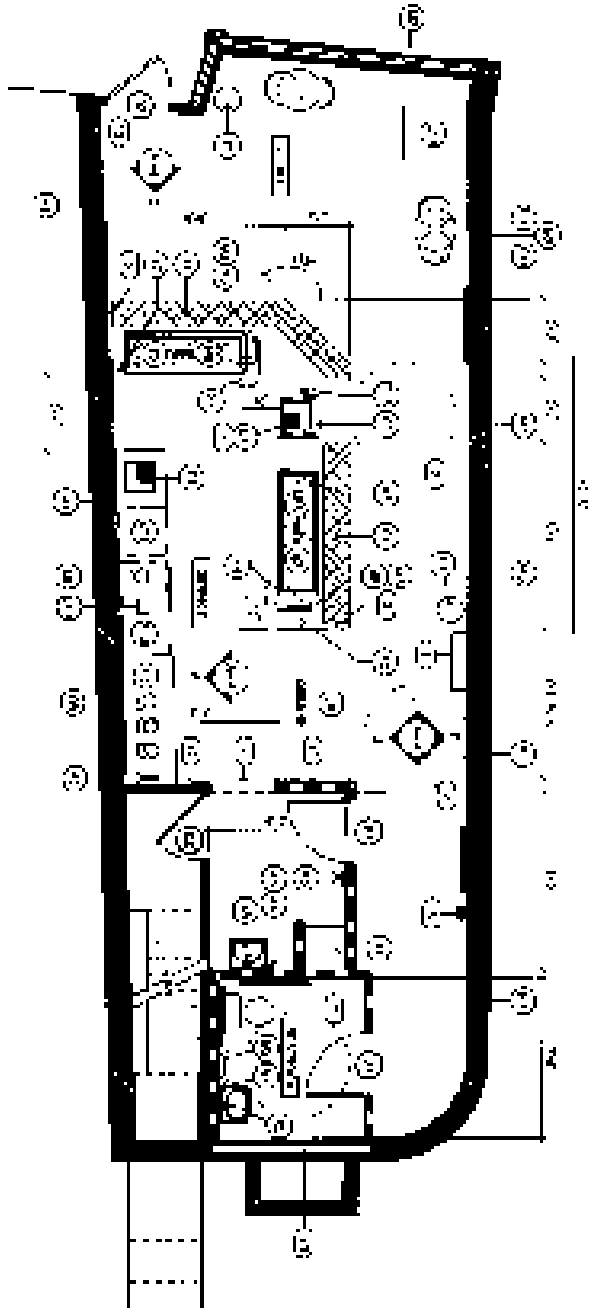
1	Office chairs	10	EA	1000
2	Office desks	5	EA	2000
3	Office printers	2	EA	500
4	Office copiers	1	EA	1000
5	Office fax machines	1	EA	200
6	Office telephones	10	EA	500
7	Office file cabinets	5	EA	500
8	Office lockers	5	EA	500
9	Office storage cabinets	5	EA	500
10	Office bookshelves	5	EA	500
11	Office lighting fixtures	5	EA	500
12	Office electrical outlets	5	EA	500
13	Office fire extinguishers	5	EA	500
14	Office first aid kits	5	EA	500
15	Office safety equipment	5	EA	500
16	Office cleaning supplies	5	EA	500
17	Office maintenance equipment	5	EA	500
18	Office furniture	5	EA	500
19	Office fixtures	5	EA	500
20	Office equipment	5	EA	500
21	Office miscellaneous items	5	EA	500

NO.	DESCRIPTION	QUANTITY	UNIT	EST. COST
22	Office microfilm	5	EA	500
23	Office additional items	5	EA	500

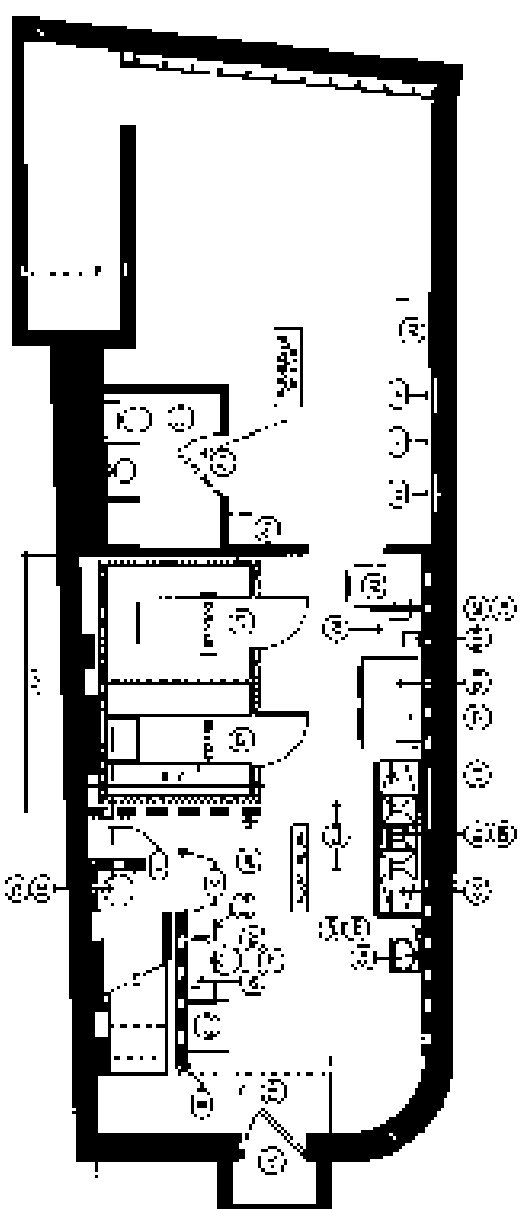
NO.	DESCRIPTION	QUANTITY	UNIT	EST. COST
24	Office furniture	5	EA	500
25	Office fixtures	5	EA	500
26	Office equipment	5	EA	500
27	Office miscellaneous items	5	EA	500

NO.	DESCRIPTION	QUANTITY	UNIT	EST. COST
28	Office furniture	5	EA	500
29	Office fixtures	5	EA	500
30	Office equipment	5	EA	500
31	Office miscellaneous items	5	EA	500

NO.	DESCRIPTION	QUANTITY	UNIT	EST. COST
32	Office furniture	5	EA	500
33	Office fixtures	5	EA	500
34	Office equipment	5	EA	500
35	Office miscellaneous items	5	EA	500

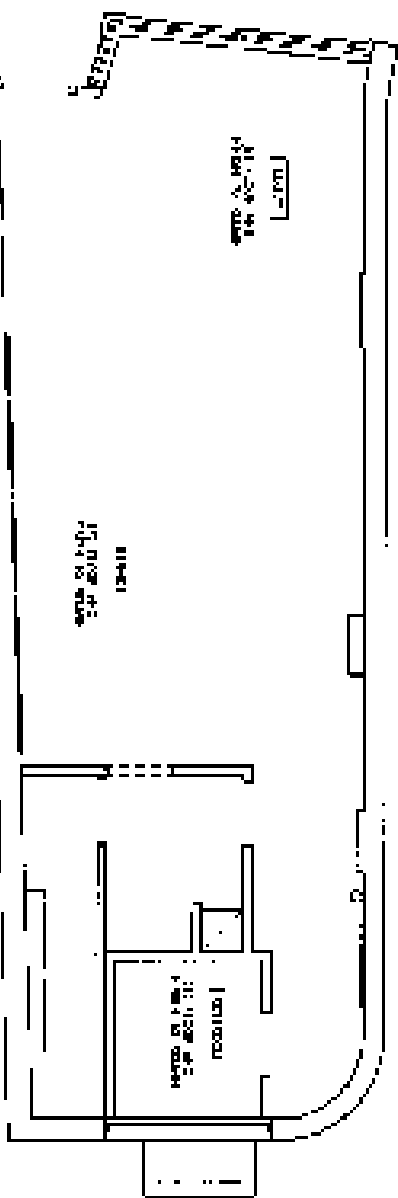
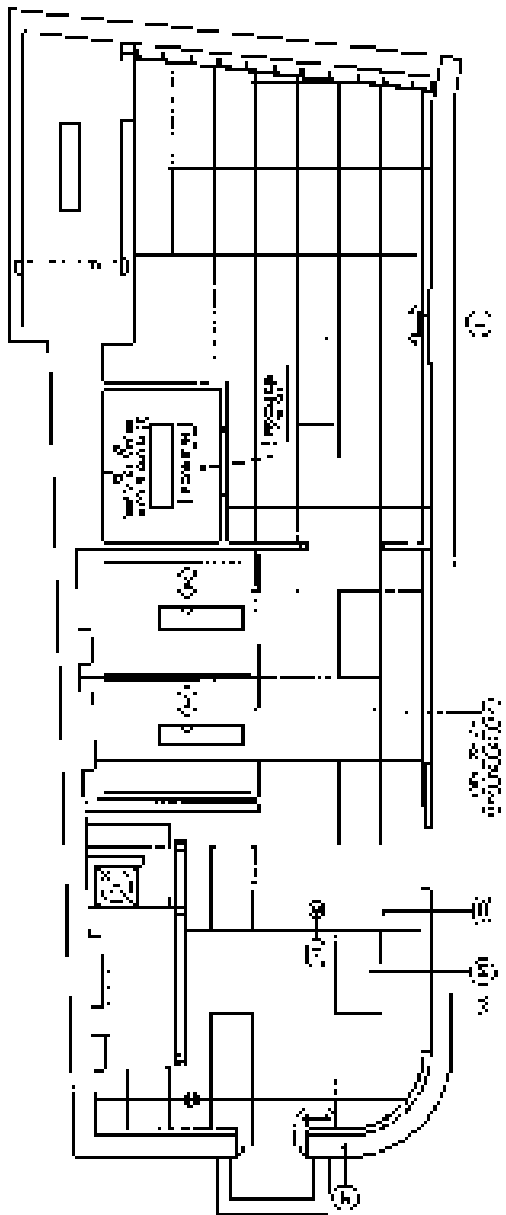
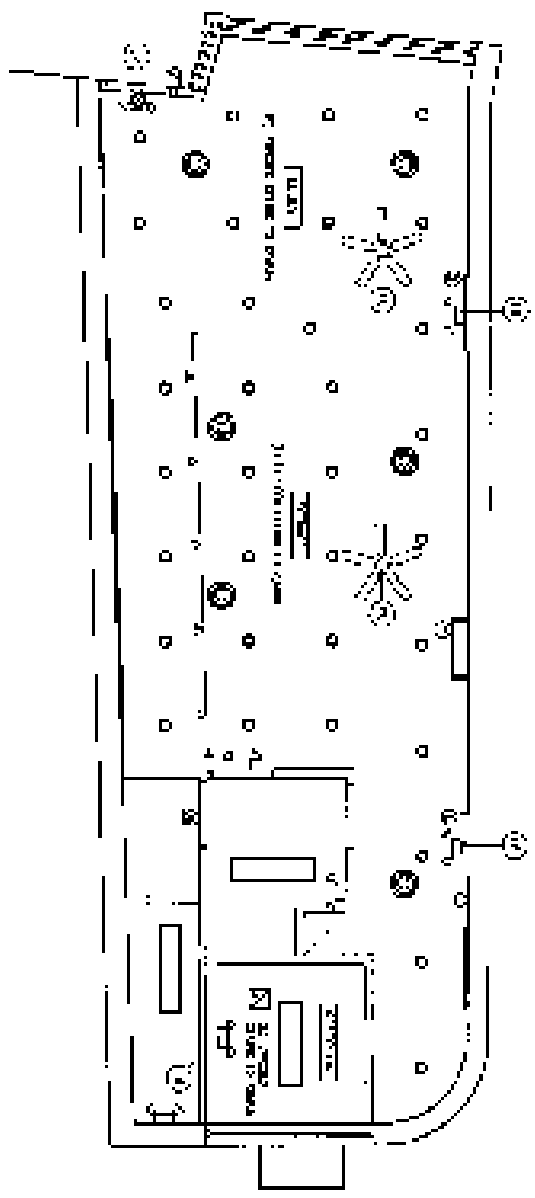


FIRST FLOOR EQUIPMENT PLAN

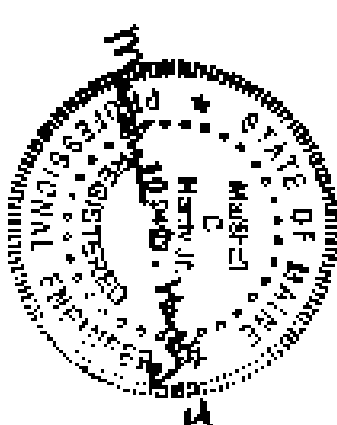


BASEMENT FINISH PLAN

- 1. See notes for general notes.
- 2. See notes for details of construction.
- 3. See notes for details of finishes.
- 4. See notes for details of equipment.
- 5. See notes for details of furniture.
- 6. See notes for details of fixtures.
- 7. See notes for details of miscellaneous items.
- 8. See notes for details of additional items.
- 9. See notes for details of office furniture.
- 10. See notes for details of office fixtures.
- 11. See notes for details of office equipment.
- 12. See notes for details of office miscellaneous items.
- 13. See notes for details of office furniture.
- 14. See notes for details of office fixtures.
- 15. See notes for details of office equipment.
- 16. See notes for details of office miscellaneous items.
- 17. See notes for details of office furniture.
- 18. See notes for details of office fixtures.
- 19. See notes for details of office equipment.
- 20. See notes for details of office miscellaneous items.



NOTES:  
 1. DO NOT REMOVE EXISTING CEILING JOIST SYSTEM  
 2. SEE ARCHITECTURAL DRAWINGS FOR  
 3. ALL WORK SHALL BE IN ACCORDANCE WITH ALL



ARCHITECT OF RECORD



Scanteq

Scanteq is a leader in the  
 construction industry  
 providing the most  
 innovative and  
 reliable solutions

OWNER:  
 GOLD STONE RESEARCH  
 15100 H. SEYMOUR BLVD., SUITE 100  
 SCOTTSDALE, AZ 85251

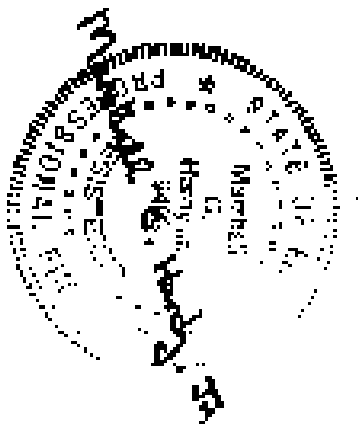
PROJECT: 1113  
 GOLD STONE RESEARCH  
 15100 H. SEYMOUR BLVD.  
 SCOTTSDALE, AZ 85251

DATE: 11-2011

NO.	DESCRIPTION	DATE
1	ISSUED FOR PERMIT	11/11/11
2	ISSUED FOR CONSTRUCTION	11/11/11
3	ISSUED FOR OCCUPANCY	11/11/11

SCALE: AS SHOWN

A-3



ADD HERE (A) (BY OWNER)



**Starnec**  
 10000  
 10000  
 10000

**OWNER**  
 10000  
 10000  
 10000

**PROJECT TITLE**

10000  
 10000  
 10000

10000  
 10000  
 10000

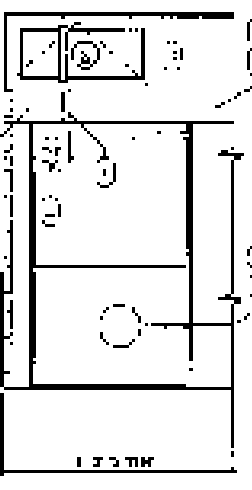
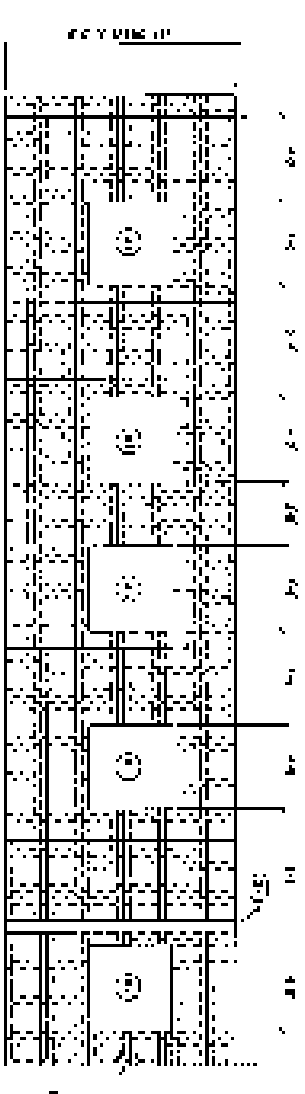
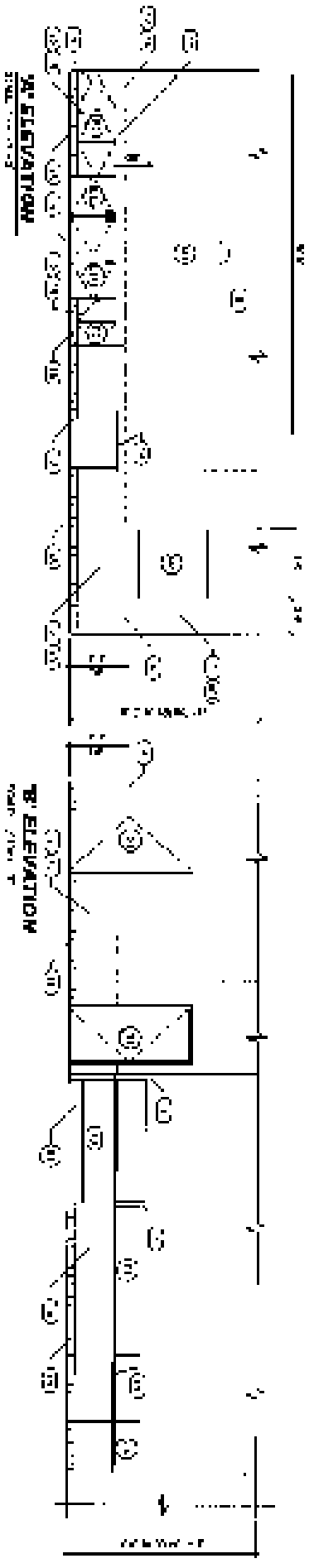
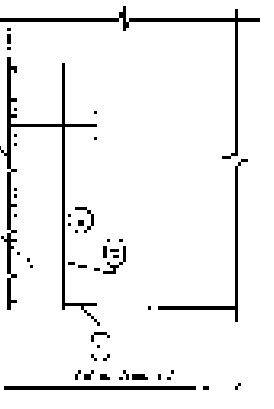
NO.	REVISION	DATE

NO.	REVISION	DATE

INTERIOR FINISHES

10000

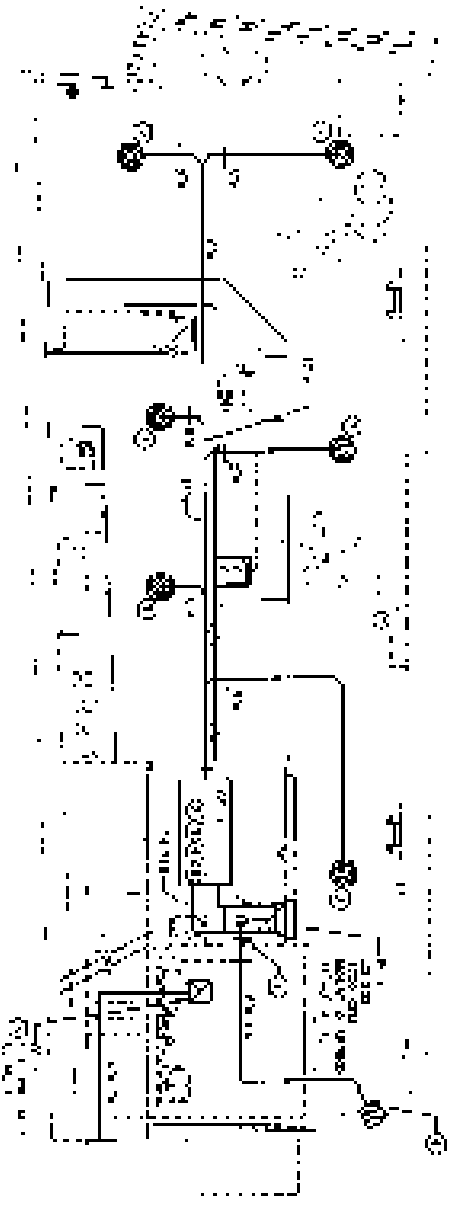
**A-4**



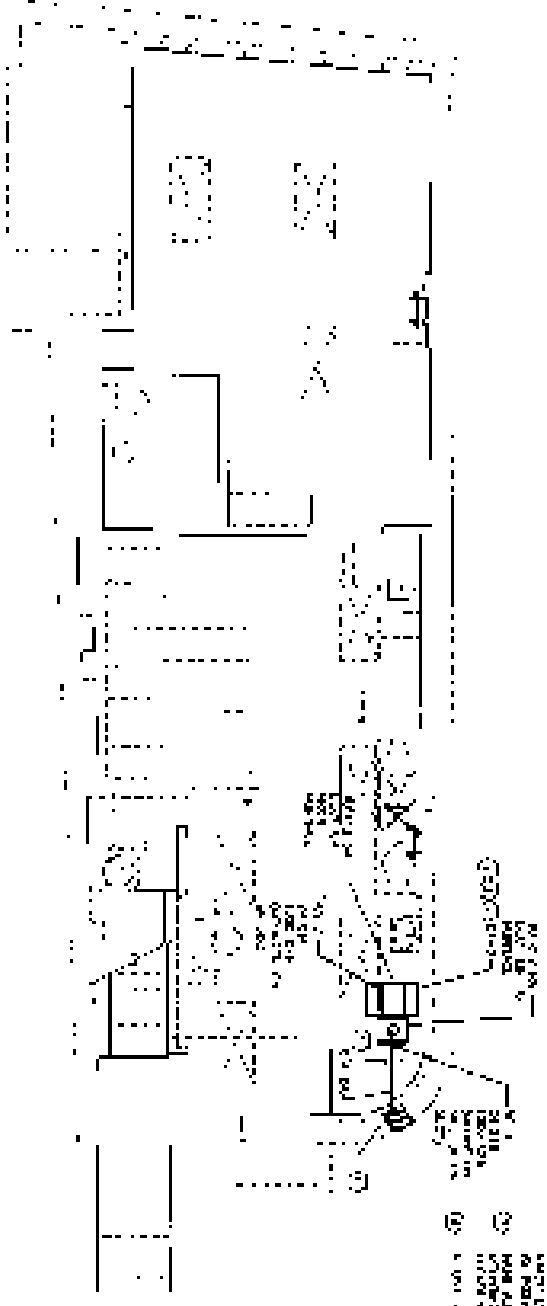
**NOTES**

1. SEE SHEET A-1 FOR GENERAL NOTES.
2. SEE SHEET A-2 FOR GENERAL NOTES.
3. SEE SHEET A-3 FOR GENERAL NOTES.
4. SEE SHEET A-4 FOR GENERAL NOTES.
5. SEE SHEET A-5 FOR GENERAL NOTES.
6. SEE SHEET A-6 FOR GENERAL NOTES.
7. SEE SHEET A-7 FOR GENERAL NOTES.
8. SEE SHEET A-8 FOR GENERAL NOTES.
9. SEE SHEET A-9 FOR GENERAL NOTES.
10. SEE SHEET A-10 FOR GENERAL NOTES.
11. SEE SHEET A-11 FOR GENERAL NOTES.
12. SEE SHEET A-12 FOR GENERAL NOTES.
13. SEE SHEET A-13 FOR GENERAL NOTES.
14. SEE SHEET A-14 FOR GENERAL NOTES.
15. SEE SHEET A-15 FOR GENERAL NOTES.
16. SEE SHEET A-16 FOR GENERAL NOTES.
17. SEE SHEET A-17 FOR GENERAL NOTES.
18. SEE SHEET A-18 FOR GENERAL NOTES.
19. SEE SHEET A-19 FOR GENERAL NOTES.
20. SEE SHEET A-20 FOR GENERAL NOTES.





MECHANICAL FLOOR PLAN - BASEMENT



MECHANICAL FLOOR PLAN - FIRST FLOOR

**HVAC SYMBOLS AND ABBREVIATIONS**

CONDENSATION UNIT	
COIL	
FAN	
DUCT	
PIPING	

**DESIGN NOTES**

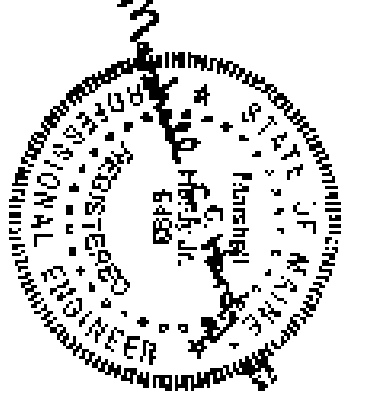
1. ALL AIR CONDITIONING EQUIPMENT SHALL BE INSTALLED IN ACCORDANCE WITH THE MANUFACTURER'S INSTALLATION INSTRUCTIONS.
2. ALL DUCTWORK SHALL BE INSTALLED IN ACCORDANCE WITH THE MANUFACTURER'S INSTALLATION INSTRUCTIONS.
3. ALL PIPING SHALL BE INSTALLED IN ACCORDANCE WITH THE MANUFACTURER'S INSTALLATION INSTRUCTIONS.
4. ALL ELECTRICAL WORK SHALL BE INSTALLED IN ACCORDANCE WITH THE NATIONAL ELECTRICAL CODE (NEC).
5. ALL MECHANICAL WORK SHALL BE INSTALLED IN ACCORDANCE WITH THE INTERNATIONAL MECHANICAL CONTRACTORS ASSOCIATION (IMCA) STANDARDS.
6. ALL WORK SHALL BE INSTALLED IN ACCORDANCE WITH THE CITY OF BOSTON MECHANICAL CODE.

**HVAC GENERAL NOTES**

1. ALL AIR CONDITIONING EQUIPMENT SHALL BE INSTALLED IN ACCORDANCE WITH THE MANUFACTURER'S INSTALLATION INSTRUCTIONS.
2. ALL DUCTWORK SHALL BE INSTALLED IN ACCORDANCE WITH THE MANUFACTURER'S INSTALLATION INSTRUCTIONS.
3. ALL PIPING SHALL BE INSTALLED IN ACCORDANCE WITH THE MANUFACTURER'S INSTALLATION INSTRUCTIONS.
4. ALL ELECTRICAL WORK SHALL BE INSTALLED IN ACCORDANCE WITH THE NATIONAL ELECTRICAL CODE (NEC).
5. ALL MECHANICAL WORK SHALL BE INSTALLED IN ACCORDANCE WITH THE INTERNATIONAL MECHANICAL CONTRACTORS ASSOCIATION (IMCA) STANDARDS.
6. ALL WORK SHALL BE INSTALLED IN ACCORDANCE WITH THE CITY OF BOSTON MECHANICAL CODE.

MECHANICAL EQUIPMENT SCHEDULE

FLOOR	AREA	DESCRIPTION	QUANTITY	UNIT PRICE	TOTAL PRICE
BASEMENT	CONDENSATION UNIT	1	1	1000.00	1000.00
BASEMENT	COIL	1	1	500.00	500.00
BASEMENT	FAN	1	1	200.00	200.00
BASEMENT	DUCT	1	1	100.00	100.00
BASEMENT	PIPING	1	1	100.00	100.00
<b>NET TOTAL</b>					<b>2000.00</b>



ARCHITECT OF RECORD



**Stark**

100 STATE STREET  
BOSTON, MA 02109  
TEL: 617-552-1111  
WWW.STARK.COM

OWNER  
100 STATE STREET  
BOSTON, MA 02109

PROJECT TITLE  
100 STATE STREET  
BOSTON, MA 02109

DATE  
10/1/2024

PROJECT NO.  
100 STATE STREET

DATE  
10/1/2024

**M-1**

**GAS FURNACE SCHEDULE (BASEMENT)**

LOADS	SCHEDULE	TIME	FURNACE LOAD				FURNACE				SCHEDULE				FURNACE			
			HEAT	COOL	HEAT	COOL	HEAT	COOL	HEAT	COOL	HEAT	COOL	HEAT	COOL	HEAT	COOL		
1	100%	10:00	100%	100%	100%	100%	100%	100%	100%	100%	100%	100%	100%	100%	100%	100%	100%	
2	100%	10:00	100%	100%	100%	100%	100%	100%	100%	100%	100%	100%	100%	100%	100%	100%	100%	

**CONDENSER SCHEDULE (OUTDOOR)**

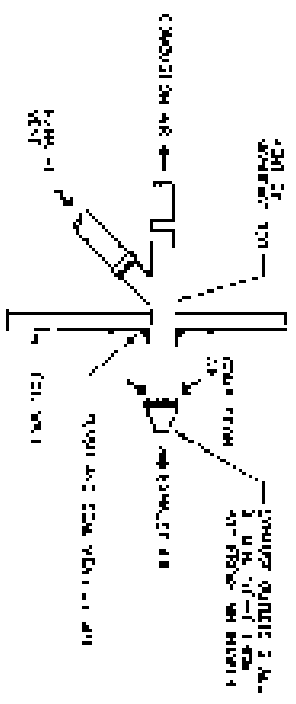
CONDENSER	TYPE	SIZE	MANUFACTURER	MODEL
1	CONDENSER	120	TRANE	48C000000
2	CONDENSER	120	TRANE	48C000000

**DIFFUSER/GRILLE SCHEDULE**

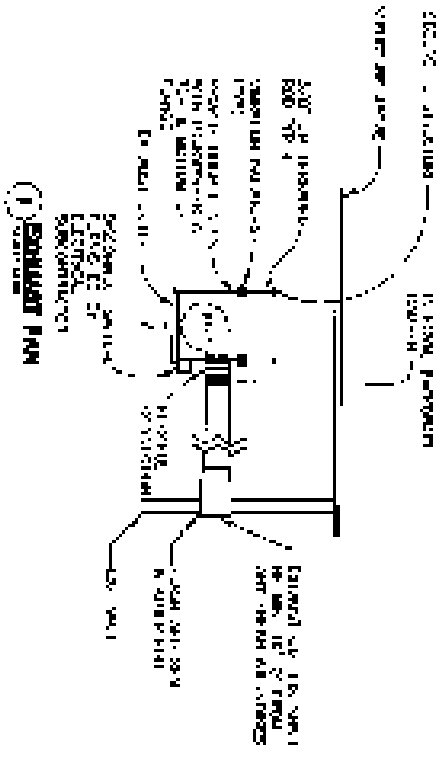
TAG	TYPE	SIZE	MANUFACTURER	MODEL	LOCATION
1	DIFFUSER	120	TRANE	48C000000	BASEMENT
2	DIFFUSER	120	TRANE	48C000000	BASEMENT

**FAN SCHEDULE**

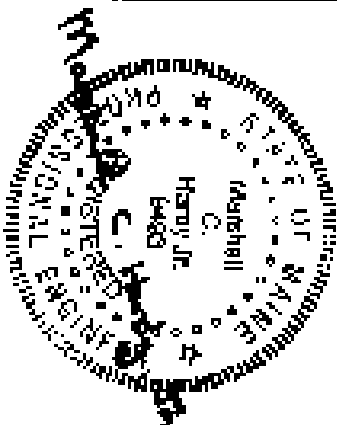
LOAD	TYPE	SIZE	MANUFACTURER	MODEL	LOCATION
1	FAN	120	TRANE	48C000000	BASEMENT
2	FAN	120	TRANE	48C000000	BASEMENT



CONDENSING VENT FROM GAS FURNACE



EXHAUST FAN



**Stalick**

4001 STREET DR. #1000  
 BALTIMORE, MD 21204  
 (410) 552-1111  
 FAX (410) 552-1112

CELL & ONE SHEET  
 18101 N. 87th STREET, N.W.  
 SUITE 100, ALLEN PARK, MI 48002

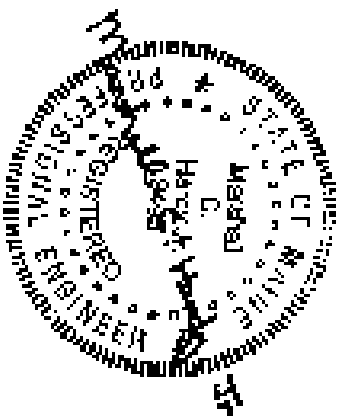
NO.	REVISIONS	DATE
1	ISSUED	10/10/00
2	REVISED	10/10/00
3	REVISED	10/10/00

DATE: 10/10/00

M-2







APPROVED BY: DAVID H. HAYS



**Starline**

Starline  
Mechanical Engineering  
1000 Main Street  
New Britain, CT 06105

PROJECT:

2077 STATE ROUTE 2  
E. 100' W. SIDE S. 411' SIDE J. 4  
SOUTH - 0411' 42' 1988

PROJECT NO.:

1-411 STONE CREAMERY  
100 400 E. STREET  
NEW BRITAIN, CT 06105

DATE: 11/28/2023

NO.	REVISION	DATE
1	ISSUE FOR PERMIT	11/28/2023
2	ISSUE FOR PERMIT	11/28/2023
3	ISSUE FOR PERMIT	11/28/2023
4	ISSUE FOR PERMIT	11/28/2023
5	ISSUE FOR PERMIT	11/28/2023
6	ISSUE FOR PERMIT	11/28/2023
7	ISSUE FOR PERMIT	11/28/2023
8	ISSUE FOR PERMIT	11/28/2023
9	ISSUE FOR PERMIT	11/28/2023
10	ISSUE FOR PERMIT	11/28/2023

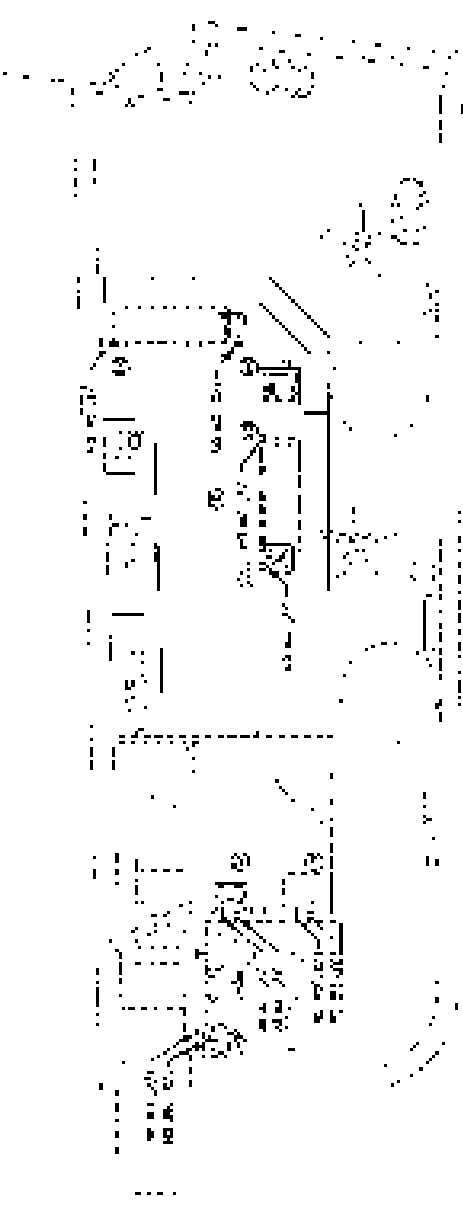
DESIGNED BY: DAVID H. HAYS

DATE: 11/28/2023

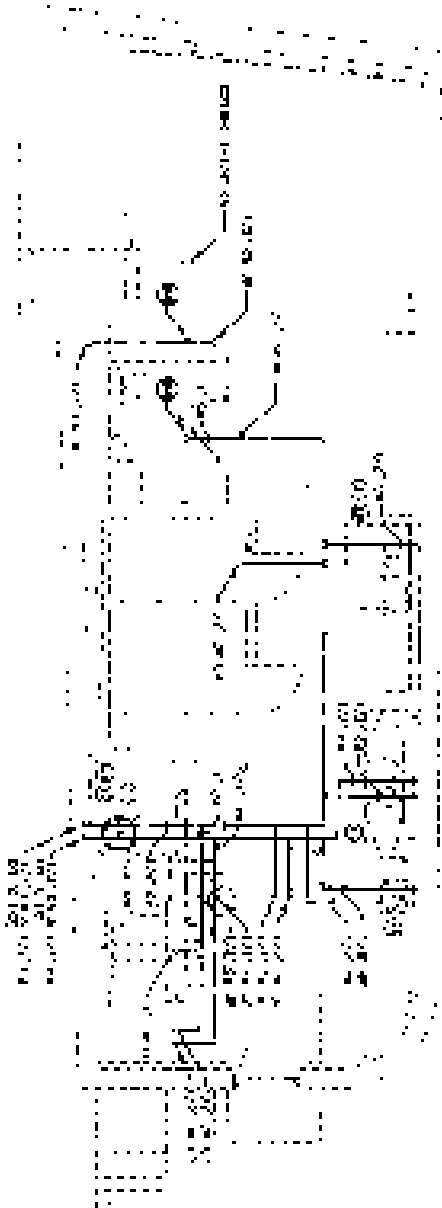
**P-2**

**KEY NOTES**

- 1. SEE ALL NOTES ON ALL SHEETS FOR PERMIT AND RECORD.
- 2. ALL WORK SHALL BE IN ACCORDANCE WITH THE CITY OF NEW BRITAIN, CONNECTICUT, DEPARTMENT OF PUBLIC WORKS, PERMITTING DIVISION, PERMITTING MANUAL.
- 3. ALL WORK SHALL BE IN ACCORDANCE WITH THE CITY OF NEW BRITAIN, CONNECTICUT, DEPARTMENT OF PUBLIC WORKS, PERMITTING DIVISION, PERMITTING MANUAL.



**1ST FLOOR DOMESTIC PIPING PLAN**  
SCALE: 1/8" = 1'-0"  
DATE: 11/28/2023



**BASEMENT DOMESTIC PIPING PLAN**  
SCALE: 1/8" = 1'-0"  
DATE: 11/28/2023

**PLUMBING FIXTURE SCHEDULE**

NO.	DESCRIPTION	MANUFACTURER MODEL	FINISH CONNECTIONS				NOTES
			FIN.	VENT	DR.	TR.	
1	WASH SINK	AMERICAN STANDARD	1	1	1	1	SEE PLAN FOR VENT LOCATION
2	TOILET	AMERICAN STANDARD	1	1	1	1	SEE PLAN FOR VENT LOCATION
3	BATH	AMERICAN STANDARD	1	1	1	1	SEE PLAN FOR VENT LOCATION
4	SHOWER	AMERICAN STANDARD	1	1	1	1	SEE PLAN FOR VENT LOCATION
5	WATER CLOSET	AMERICAN STANDARD	1	1	1	1	SEE PLAN FOR VENT LOCATION
6	WATER CLOSET	AMERICAN STANDARD	1	1	1	1	SEE PLAN FOR VENT LOCATION
7	WATER CLOSET	AMERICAN STANDARD	1	1	1	1	SEE PLAN FOR VENT LOCATION
8	WATER CLOSET	AMERICAN STANDARD	1	1	1	1	SEE PLAN FOR VENT LOCATION
9	WATER CLOSET	AMERICAN STANDARD	1	1	1	1	SEE PLAN FOR VENT LOCATION
10	WATER CLOSET	AMERICAN STANDARD	1	1	1	1	SEE PLAN FOR VENT LOCATION
11	WATER CLOSET	AMERICAN STANDARD	1	1	1	1	SEE PLAN FOR VENT LOCATION
12	WATER CLOSET	AMERICAN STANDARD	1	1	1	1	SEE PLAN FOR VENT LOCATION

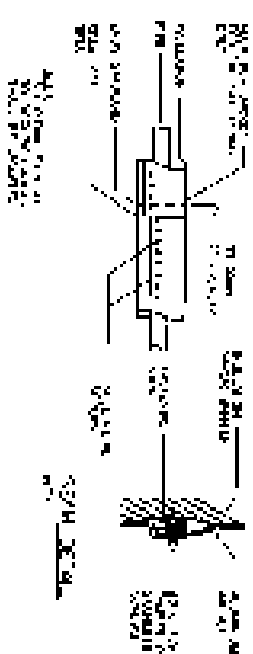
**FIXTURE UNIT SUMMARY**

NO.	DESCRIPTION	PLUMBING	CEILING	WALL	FLOOR
1	WASH SINK	1	1	1	1
2	TOILET	1	1	1	1
3	BATH	1	1	1	1
4	SHOWER	1	1	1	1
5	WATER CLOSET	1	1	1	1
6	WATER CLOSET	1	1	1	1
7	WATER CLOSET	1	1	1	1
8	WATER CLOSET	1	1	1	1
9	WATER CLOSET	1	1	1	1
10	WATER CLOSET	1	1	1	1
11	WATER CLOSET	1	1	1	1
12	WATER CLOSET	1	1	1	1

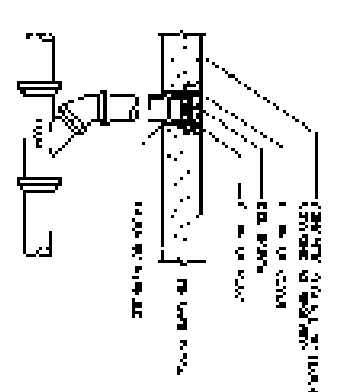
**NOTES:**  
 1. SEE PLAN FOR VENT LOCATION  
 2. SEE PLAN FOR VENT LOCATION  
 3. SEE PLAN FOR VENT LOCATION  
 4. SEE PLAN FOR VENT LOCATION  
 5. SEE PLAN FOR VENT LOCATION

**FIRE PROTECTION NOTES:**

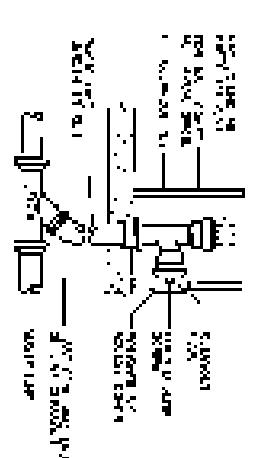
1. ALL WORK SHALL BE IN ACCORDANCE WITH THE LATEST EDITIONS OF THE NATIONAL FIRE PROTECTION ASSOCIATION (NFPA) CODES AND STANDARDS.
2. ALL WORK SHALL BE IN ACCORDANCE WITH THE LATEST EDITIONS OF THE INTERNATIONAL CODE BOOKS.
3. ALL WORK SHALL BE IN ACCORDANCE WITH THE LATEST EDITIONS OF THE NATIONAL ELECTRICAL CODE (NEC).
4. ALL WORK SHALL BE IN ACCORDANCE WITH THE LATEST EDITIONS OF THE INTERNATIONAL MECHANICAL EXHAUSTIVE CODE (IMEC).
5. ALL WORK SHALL BE IN ACCORDANCE WITH THE LATEST EDITIONS OF THE INTERNATIONAL PLUMBING AND HEATING CODE (IPHC).
6. ALL WORK SHALL BE IN ACCORDANCE WITH THE LATEST EDITIONS OF THE INTERNATIONAL MECHANICAL EXHAUSTIVE CODE (IMEC).
7. ALL WORK SHALL BE IN ACCORDANCE WITH THE LATEST EDITIONS OF THE NATIONAL ELECTRICAL CODE (NEC).
8. ALL WORK SHALL BE IN ACCORDANCE WITH THE LATEST EDITIONS OF THE INTERNATIONAL MECHANICAL EXHAUSTIVE CODE (IMEC).
9. ALL WORK SHALL BE IN ACCORDANCE WITH THE LATEST EDITIONS OF THE INTERNATIONAL PLUMBING AND HEATING CODE (IPHC).
10. ALL WORK SHALL BE IN ACCORDANCE WITH THE LATEST EDITIONS OF THE NATIONAL ELECTRICAL CODE (NEC).
11. ALL WORK SHALL BE IN ACCORDANCE WITH THE LATEST EDITIONS OF THE INTERNATIONAL MECHANICAL EXHAUSTIVE CODE (IMEC).
12. ALL WORK SHALL BE IN ACCORDANCE WITH THE LATEST EDITIONS OF THE INTERNATIONAL PLUMBING AND HEATING CODE (IPHC).



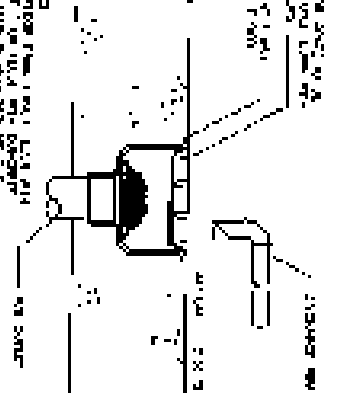
**1. FLOOR CLEANOUT - ENLARGED ROOMS**



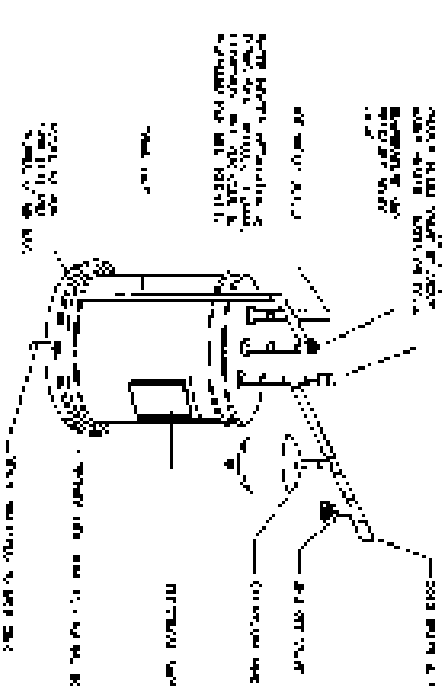
**2. INSULATION JACKET DETAIL**



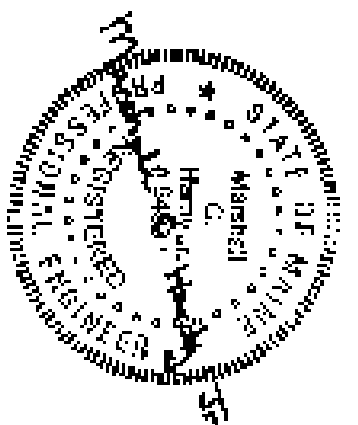
**3. TOILET CLEANOUT ENLARGED ROOMS**



**4. FLOOR CLEANOUT DETAIL**



**5. ELECTRICAL WATER HEATER**



ARCHITECT: J. B. [Name]



**Stantec**

PROJECT TITLE:  
 ONE STORY GARAGE  
 1000 N. 30th STREET  
 PORTLAND, ME 04101

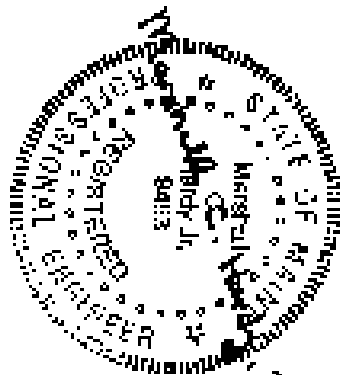
DATE: 10/1/2010

NO.	REVISION	DATE
1	ISSUE FOR PERMIT	10/1/2010

NO.	REVISION	DATE
1	ISSUE FOR PERMIT	10/1/2010

DATE: 10/1/2010





APPROVED BY SURVEYOR



**Stantec**

1000 North Street  
 Washington, DC 20004

GROUP: COLD STONE POWER  
 PROJECT: COLD STONE POWER  
 SHEET: E-1

PROJECT TITLE

COLD STONE POWER  
 20 NORTH STREET  
 WASHINGTON, D.C. 20004

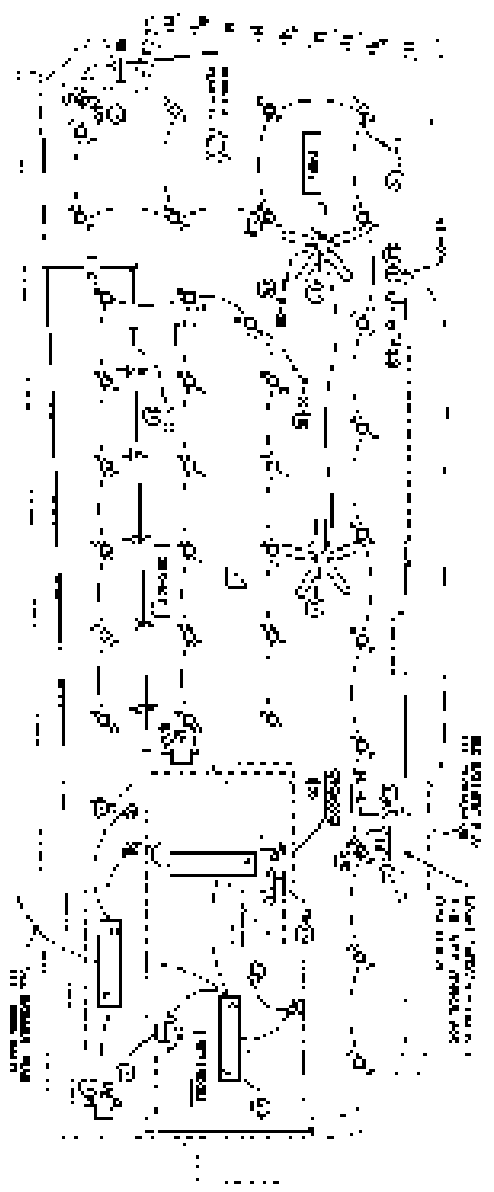
DATE: 11/20/2015

NO.	DATE	DESCRIPTION
1	11/20/2015	ISSUED FOR PERMIT
2	11/20/2015	ISSUED FOR PERMIT
3	11/20/2015	ISSUED FOR PERMIT
4	11/20/2015	ISSUED FOR PERMIT
5	11/20/2015	ISSUED FOR PERMIT

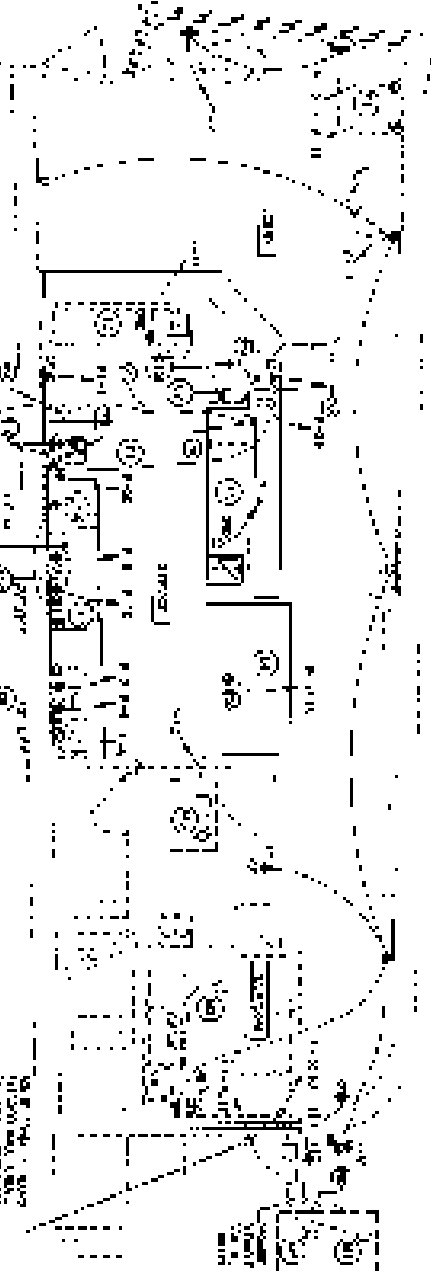
PROJECT TITLE

COLD STONE POWER  
 20 NORTH STREET  
 WASHINGTON, D.C. 20004

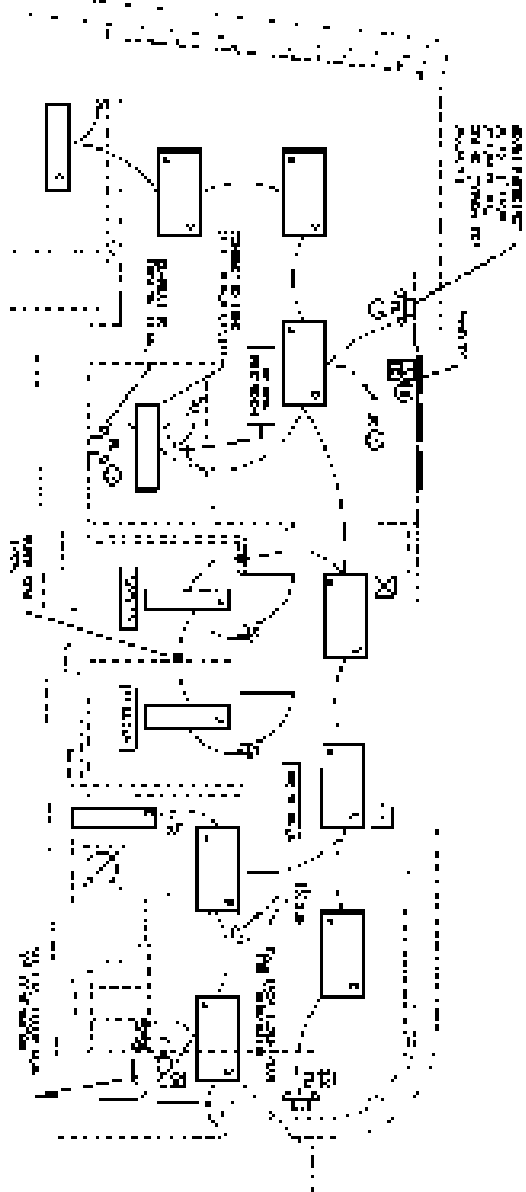
DATE: 11/20/2015



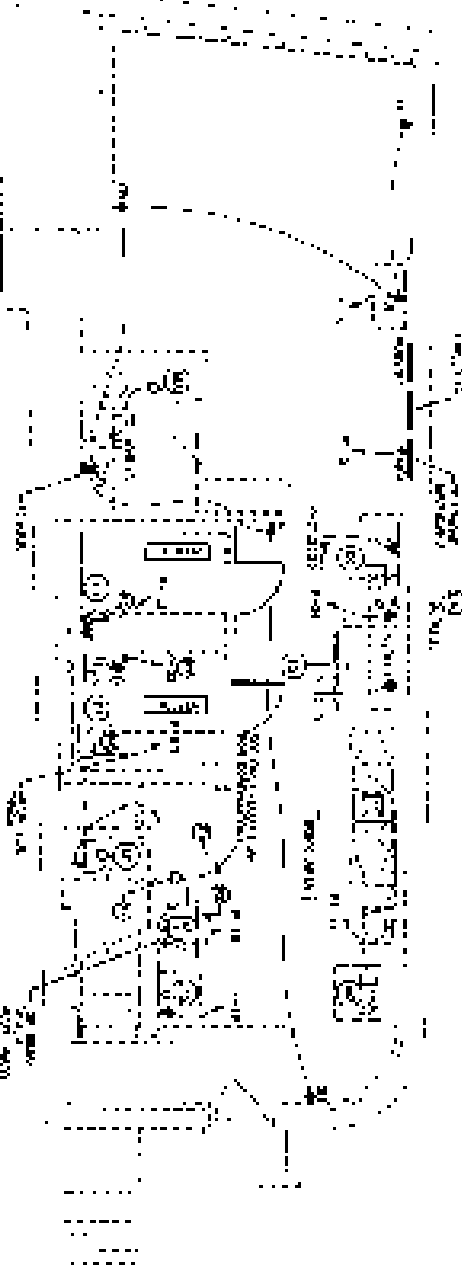
FIRST FLOOR LIGHTING PLAN  
 SCALE: 1/8" = 1'-0"



FIRST FLOOR EQUIPMENT/POWER PLAN  
 SCALE: 1/8" = 1'-0"



BASEMENT LIGHTING PLAN  
 SCALE: 1/8" = 1'-0"



BASEMENT EQUIPMENT/POWER PLAN  
 SCALE: 1/8" = 1'-0"

- GENERAL NOTES:**
1. ALL LIGHTING FIXTURES SHALL BE INSTALLED IN ACCORDANCE WITH THE MANUFACTURER'S INSTALLATION INSTRUCTIONS.
  2. ALL LIGHTING FIXTURES SHALL BE INSTALLED IN ACCORDANCE WITH THE NATIONAL ELECTRICAL CODE (NEC).
  3. ALL LIGHTING FIXTURES SHALL BE INSTALLED IN ACCORDANCE WITH THE INTERNATIONAL CITY OF BALTIMORE ELECTRICAL CODE (ICBC).
  4. ALL LIGHTING FIXTURES SHALL BE INSTALLED IN ACCORDANCE WITH THE MARYLAND ELECTRICAL CODE (MEC).
  5. ALL LIGHTING FIXTURES SHALL BE INSTALLED IN ACCORDANCE WITH THE MARYLAND ELECTRICAL CODE (MEC).
  6. ALL LIGHTING FIXTURES SHALL BE INSTALLED IN ACCORDANCE WITH THE MARYLAND ELECTRICAL CODE (MEC).
  7. ALL LIGHTING FIXTURES SHALL BE INSTALLED IN ACCORDANCE WITH THE MARYLAND ELECTRICAL CODE (MEC).
  8. ALL LIGHTING FIXTURES SHALL BE INSTALLED IN ACCORDANCE WITH THE MARYLAND ELECTRICAL CODE (MEC).
  9. ALL LIGHTING FIXTURES SHALL BE INSTALLED IN ACCORDANCE WITH THE MARYLAND ELECTRICAL CODE (MEC).
  10. ALL LIGHTING FIXTURES SHALL BE INSTALLED IN ACCORDANCE WITH THE MARYLAND ELECTRICAL CODE (MEC).

- GENERAL NOTES:**
1. ALL LIGHTING FIXTURES SHALL BE INSTALLED IN ACCORDANCE WITH THE MANUFACTURER'S INSTALLATION INSTRUCTIONS.
  2. ALL LIGHTING FIXTURES SHALL BE INSTALLED IN ACCORDANCE WITH THE NATIONAL ELECTRICAL CODE (NEC).
  3. ALL LIGHTING FIXTURES SHALL BE INSTALLED IN ACCORDANCE WITH THE INTERNATIONAL CITY OF BALTIMORE ELECTRICAL CODE (ICBC).
  4. ALL LIGHTING FIXTURES SHALL BE INSTALLED IN ACCORDANCE WITH THE MARYLAND ELECTRICAL CODE (MEC).
  5. ALL LIGHTING FIXTURES SHALL BE INSTALLED IN ACCORDANCE WITH THE MARYLAND ELECTRICAL CODE (MEC).
  6. ALL LIGHTING FIXTURES SHALL BE INSTALLED IN ACCORDANCE WITH THE MARYLAND ELECTRICAL CODE (MEC).
  7. ALL LIGHTING FIXTURES SHALL BE INSTALLED IN ACCORDANCE WITH THE MARYLAND ELECTRICAL CODE (MEC).
  8. ALL LIGHTING FIXTURES SHALL BE INSTALLED IN ACCORDANCE WITH THE MARYLAND ELECTRICAL CODE (MEC).
  9. ALL LIGHTING FIXTURES SHALL BE INSTALLED IN ACCORDANCE WITH THE MARYLAND ELECTRICAL CODE (MEC).
  10. ALL LIGHTING FIXTURES SHALL BE INSTALLED IN ACCORDANCE WITH THE MARYLAND ELECTRICAL CODE (MEC).

- GENERAL NOTES:**
1. ALL LIGHTING FIXTURES SHALL BE INSTALLED IN ACCORDANCE WITH THE MANUFACTURER'S INSTALLATION INSTRUCTIONS.
  2. ALL LIGHTING FIXTURES SHALL BE INSTALLED IN ACCORDANCE WITH THE NATIONAL ELECTRICAL CODE (NEC).
  3. ALL LIGHTING FIXTURES SHALL BE INSTALLED IN ACCORDANCE WITH THE INTERNATIONAL CITY OF BALTIMORE ELECTRICAL CODE (ICBC).
  4. ALL LIGHTING FIXTURES SHALL BE INSTALLED IN ACCORDANCE WITH THE MARYLAND ELECTRICAL CODE (MEC).
  5. ALL LIGHTING FIXTURES SHALL BE INSTALLED IN ACCORDANCE WITH THE MARYLAND ELECTRICAL CODE (MEC).
  6. ALL LIGHTING FIXTURES SHALL BE INSTALLED IN ACCORDANCE WITH THE MARYLAND ELECTRICAL CODE (MEC).
  7. ALL LIGHTING FIXTURES SHALL BE INSTALLED IN ACCORDANCE WITH THE MARYLAND ELECTRICAL CODE (MEC).
  8. ALL LIGHTING FIXTURES SHALL BE INSTALLED IN ACCORDANCE WITH THE MARYLAND ELECTRICAL CODE (MEC).
  9. ALL LIGHTING FIXTURES SHALL BE INSTALLED IN ACCORDANCE WITH THE MARYLAND ELECTRICAL CODE (MEC).
  10. ALL LIGHTING FIXTURES SHALL BE INSTALLED IN ACCORDANCE WITH THE MARYLAND ELECTRICAL CODE (MEC).

