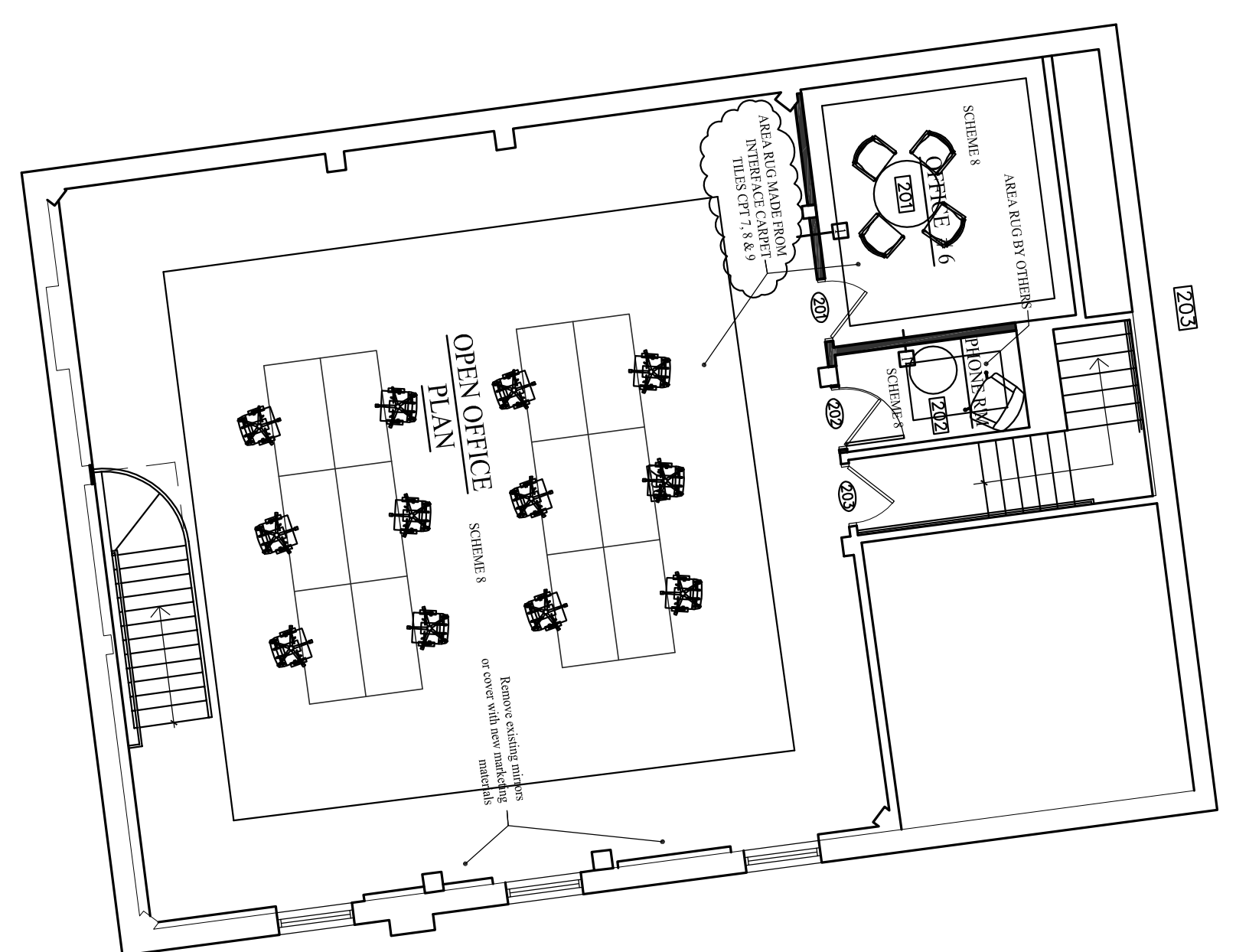


1 First Floor Finish Plan - 1/8"  
Scale: 1/8" = 1'-0"



2 Second Floor Carriage House Finish Plan - 1/8"  
Scale: 1/8" = 1'-0"

CPT1	CARPET	INTERFACE HUMAN NATURE HN810 104217 PUMICE PLANK ASHLAR INSTALL	SEE CARPET INSTALLATION PLAN (FN3) FOR EXACT LOCATIONS
CPT2	CARPET	INTERFACE HUMAN NATURE HN850 104209 PUMICE PLANK ASHLAR INSTALL	SEE CARPET INSTALLATION PLAN (FN3) FOR EXACT LOCATIONS
CPT3	CARPET	INTERFACE HUMAN NATURE HN840 104225 PLANK ASHLAR INSTALL	SEE CARPET INSTALLATION PLAN (FN3) FOR EXACT LOCATIONS
CPT4	CARPET	INTERFACE VIVA COLORS 101162 MANDARINA 50CM CUT INTO PLANK - AI	SEE CARPET INSTALLATION PLAN (FN3) FOR EXACT LOCATIONS
CPT5	WALK OFF MAT	INTERFACE STYLE AND COLOR TBD	
CPT6	CARPET	INTERFACE HUMAN NATURE HN820 104233 PUMICE PLANK ASHLAR INSTALL	
CPT7	CARPET	INTERFACE ONLINE 103794 LAGOON PLANK ASHLAR INSTALL	
CPT8	CARPET	INTERFACE ONLINE 105265 EMERALD PLANK ASHLAR INSTALL	
CPT9	CARPET	INTERFACE ONLINE 109264 GRASS PLANK ASHLAR INSTALL	
LVT	LUX VINYL TILE	WOLAWK GROUP - SECORA 945 ALDER CREEK	LOOSELAY, WIPPRIMER, GLUE ONLY WITH M5160 SPRAY OR M1700
WB1	WOOD FLOORING	RESAWN TIMBER NEWPORT-BLACK WALNUT-FINISH-HARDWAX OIL	
VB1	VINYL BASE	JOHNSONITE 4" STRAIGHT VINYL BASE COLOR TBD	
VB2	VINYL BASE	JOHNSONITE 4" COVE VINYL BASE COLOR TBD	
WB1	WOOD BASE	4" CUSTOM STAINED WOOD BASE	
T1	PORCELAIN TILE	BEST TILE TRACE - IRON - 12" X 24"	
TB1	TILE BASE	BEST TILE TRACE COLOR - IRON - BULLNOSE 2 1/2" X 23 5/8"	
G11	GROUT	TEC OR EQUAL - COLOR 941 RAVEN 1/8" GROUT LINE	
D1	MEMBRANE	SCHLUTER DITRA-UNCOUPLING MEMBRANE UNDER PORCELAIN TILE	
TS1	TRANSITION	SCHLUTER SCHIENE - TILE TO OPT TRANSITIONS STAINLESS	
TS2	TRANSITION	VINYL TRANS. STRIP JOHNSONITE CARPET TO LVT TRANSITIONS	
SW1	WD CLADDING	RESAWN TIMBER NEWPORT-BLACK WALNUT-FINISH-HARDWAX OIL	SEE INSTALLATION SPEC SHEET
CS1	CRIST STAIN	CUSTOM STAIN TO MATCH TLA'S CONTROL SAMPLE	
PT1	PAINT	BENJAMIN MOORE - COLOR TBD - SEE NOTES FOR PAINT APPLICATION	
PT2	PAINT	BENJAMIN MOORE - COLOR TBD - SEE NOTES FOR PAINT APPLICATION	
PT3	PAINT	BENJAMIN MOORE - COLOR TBD - SEE NOTES FOR PAINT APPLICATION	
PT4	PAINT	BENJAMIN MOORE - COLOR TBD - SEE NOTES FOR PAINT APPLICATION	
PT5	PAINT	BENJAMIN MOORE - COLOR TBD - SEE NOTES FOR PAINT APPLICATION	
PT6	PAINT	BENJAMIN MOORE - COLOR TBD - SEE NOTES FOR PAINT APPLICATION	
PTZ	PAINT	BENJAMIN MOORE - COLOR TBD - SEE NOTES FOR PAINT APPLICATION	
PT8	PAINT	BENJAMIN MOORE - COLOR TBD - SEE NOTES FOR PAINT APPLICATION	
ST1	WD-FEASUR	ARMSTRONG YORK HARDWARE - CHESTERWOODHOUSE CHILE - SEE NOTES BELOW	
ST1	STAIR TREADS	JOHNSONITE - Rubber Tread with Integrated Fuser and Landing - Burnt Umber - Hammered Texture	

INTERIOR PAINTING NOTES  
Gypsum Board: Provide a primer and two finish coats over interior gypsum board surfaces:  
1. GNB Soffits and Ceilings: Flat Acrylic Finish, except as indicated otherwise.  
2. GNB Walls: Low-Luster (Eggshell), Acrylic Finish, except as indicated otherwise.  
3. Door Trim: Semi-gloss, Acrylic Finish, except as indicated otherwise.  
4. NO PAINT ON DIRTT WALLS

INTERIOR FINISH NOTES  
1. NO BASE ON DIRTT WALLS  
2. NO BASE ON SPECIALTY MILLWORK FEATURES  
3. ALL SPECIALTY MILLWORK FIXTURES BY TLA  
4. WINDOW TREATMENTS BY TLA  
5. ALL FLOORING BY TLA  
6. ALL MAJOR FLOORING PREP BY TLA'S FLOORING CONTRACTOR WITH EXCEPTION TO THE CARRIAGE HOUSE FLOOR - G.C. TO MAKE GOOD EXISTING FLOORS, IE. CLEANING, SANDING OR ADDITIONAL WORK AS NEEDED TO BRING FLOORS TO AN ACCEPTABLE FINISHED STANDARD.

Panel Size: Custom - TBD by Armstrong & architectural drawings - Wood Species: Yellow Poplar  
Wood Finish: Standard - Blade Size and Spacing: 3 - 1/2" x 4 - 1/2" with 2 Blade per foot  
(5" spacing between each blade) - Product: Armstrong World Industries, Custom Woodworks Grille by Architectural Specialties, Solid Wood Dowel Panels with Custom Miller Ceiling to Wall Transition  
Please note: wall members anchor to the floor. Please contact Armstrong rep (David Durfee (978) 759-4339)

REPRESENTS SPECIALTY MILLWORK FIXTURES BY TLA

SCHEME 1 - Vestibule 100	FLOOR	CPT5	
	BASE	VB1	
	WALLS	PNT	
	CEILING	PNT	
	DOORS	PNT	
	Door Frame	PNT	
SCHEME 2 - LOBBY 101, OFFICES 102, 103, 104	FLOOR	CPT1, CPT2, CPT3, CPT4	
	BASE	VB1	
	WALLS	PNT	
	CEILING	PNT LOBBY / ACT2 OFFICES 102, 103 & 104	
	DOORS	PNT	
	Door Frame	PNT	
SCHEME 3 - 109, 107, 112, 115, 117, 118, 119, 120, 121 & 122	FLOOR	CPT6	
	BASE	VB1	
	WALLS	PNT	
	CEILING	PNT & ACT2 OFFICES 120, 121 & 118	
	DOORS	PNT	
	Door Frame	PNT	
SCHEME 4 - TOILETS 110, 111, 116	FLOOR	T1, GT1, D1 & TS1	
	BASE	TB1	
	WALLS	PNT	
	CEILING	GNB CEILING- PNT	
	DOORS	PNT	
	Door Frame	PNT	
SCHEME 5 - EXISTING LANDING & CLOSET 126	FLOOR	WD1	
	BASE	VB1	
	WALLS	PNT	
	CEILING	GNB CEILING- PNT	
	DOORS	PNT	
	Door Frame	PNT	
SCHEME 6 - STORAGE 127, 125, 114, 113	FLOOR	LVT1, TS2	
	BASE	VB1	
	WALLS	PNT	
	CEILING	ACT 1	
	DOORS	PNT	
	Door Frame	PNT	
SCHEME 7 - KITCHEN 124	FLOOR	LVT1	
	BASE	VB1	
	WALLS	PNT	
	CEILING	GYP CEILING- PNT	
	DOORS	PNT	
	Door Frame	PNT	
SCHEME 8 - CARRIAGE HOUSE 200, 201, 202	FLOOR	CPT 7, 8, 9 (SEE F.1.2 & F.1.3 FOR LAYOUT)	
	BASE	PNT EXISTING?	
	WALLS	PNT	
	CEILING	PNT EXISTING?	
	DOORS	PNT	
	Door Frame	PNT	
SCHEME 9 - 127 (Zan Room)	FLOOR	WD1	
	BASE	TBD	
	WALLS	PNT	
	CEILING	ACT2	
	DOORS	PNT	
	Door Frame	PNT	

Rev No3	7.25.2016	FLOORING RM.127, RM.201/202	Drawn by: JFD
Rev No2	7.11.2016	ADDED LVT SPEC	
Rev No1	7.6.2016	Change to WD1 & SW1	
Rev. No.	Date	Description	