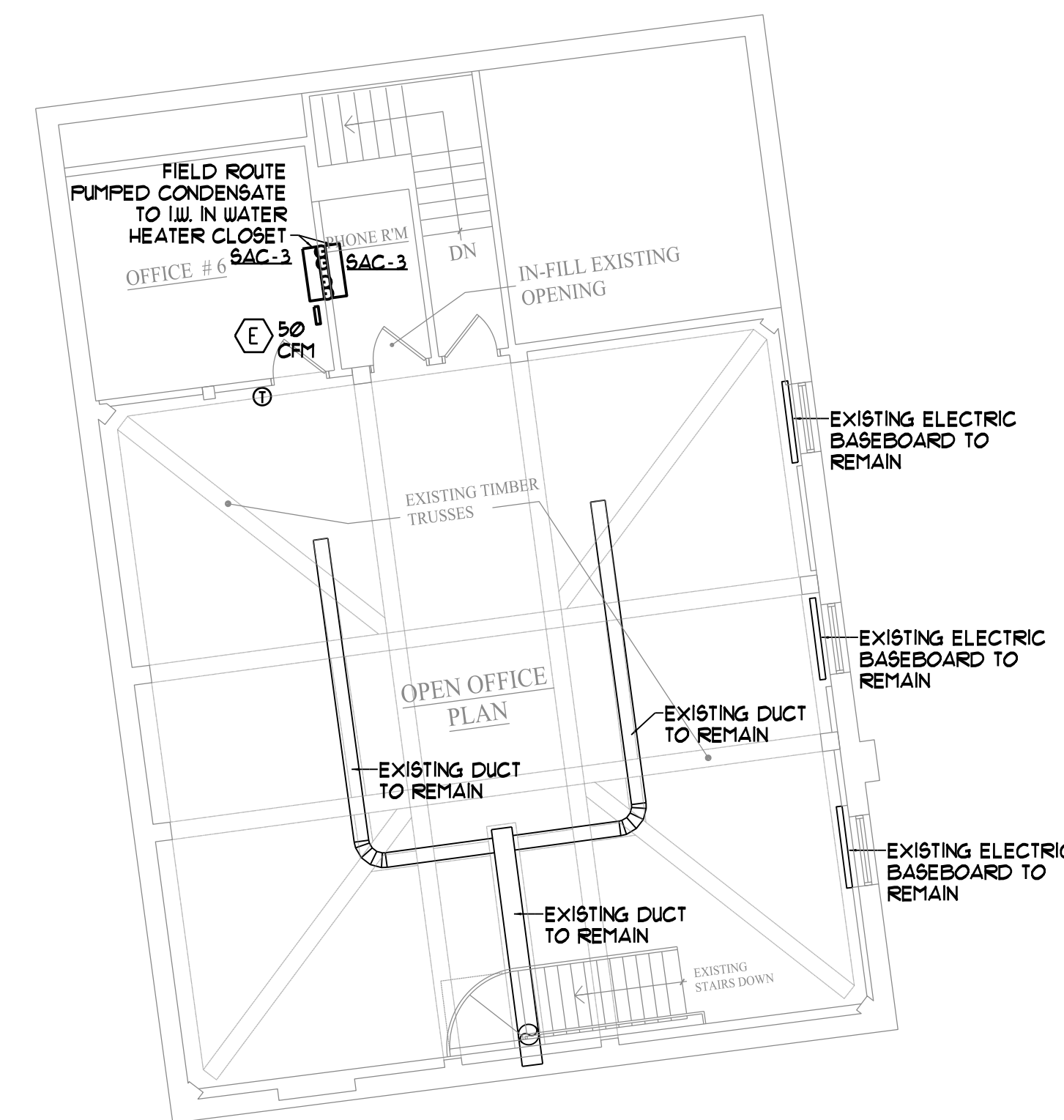


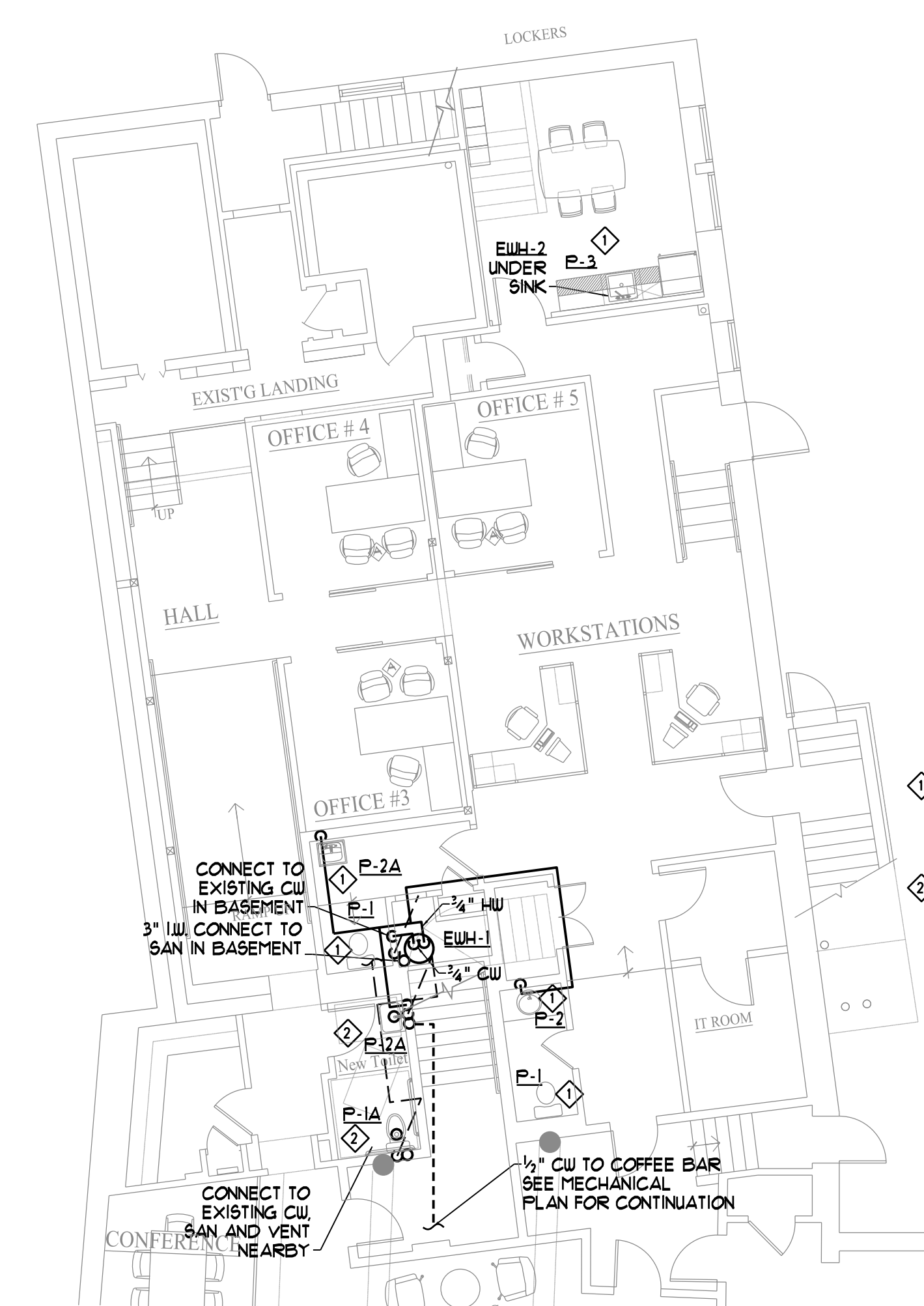
**MECHANICAL PLAN**  
SCALE - 1/8" = 1'-0"

NOTE - ALL EXPOSED DUCT SHALL BE PREPARED FOR PAINTING.

NOTE - REMOVE ALL EXISTING DUCTWORK EXCEPT DROPS FROM AIR HANDLERS AND DUCT NOTED TO REMAIN.



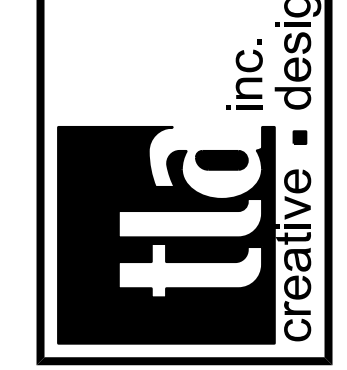
**SECOND FLOOR MECHANICAL PLAN**  
SCALE - 1/8" = 1'-0"



**PLUMBING PLAN**  
SCALE - 1/8" = 1'-0"

- ◇ REMOVE EXISTING FIXTURE, CAP HW, PREPARE CU, SAN AND VENT PIPING FOR CONNECTION OF PROPOSED FIXTURE
- ◇ REMOVE EXISTING LAVATORY AND WATER CLOSET, CAP HW, EXTEND CU, SAN AND VENT PIPING TO PROPOSED FIXTURE LOCATIONS

400 US Route One, Suite A South  
Falmouth, ME 04105  
Tel: (207) 842-6260  
Fax: (207) 842-6271  
1 (800) 232-2253



Rev. No.	Date	Description	Drawn by: JFD

**Machias Savings Bank**  
193 Middle Street, Portland, Maine  
**First & Second Floor Mechanical Plan**

M1	sheet number	
	issued: 6-24-16	
	project no.	