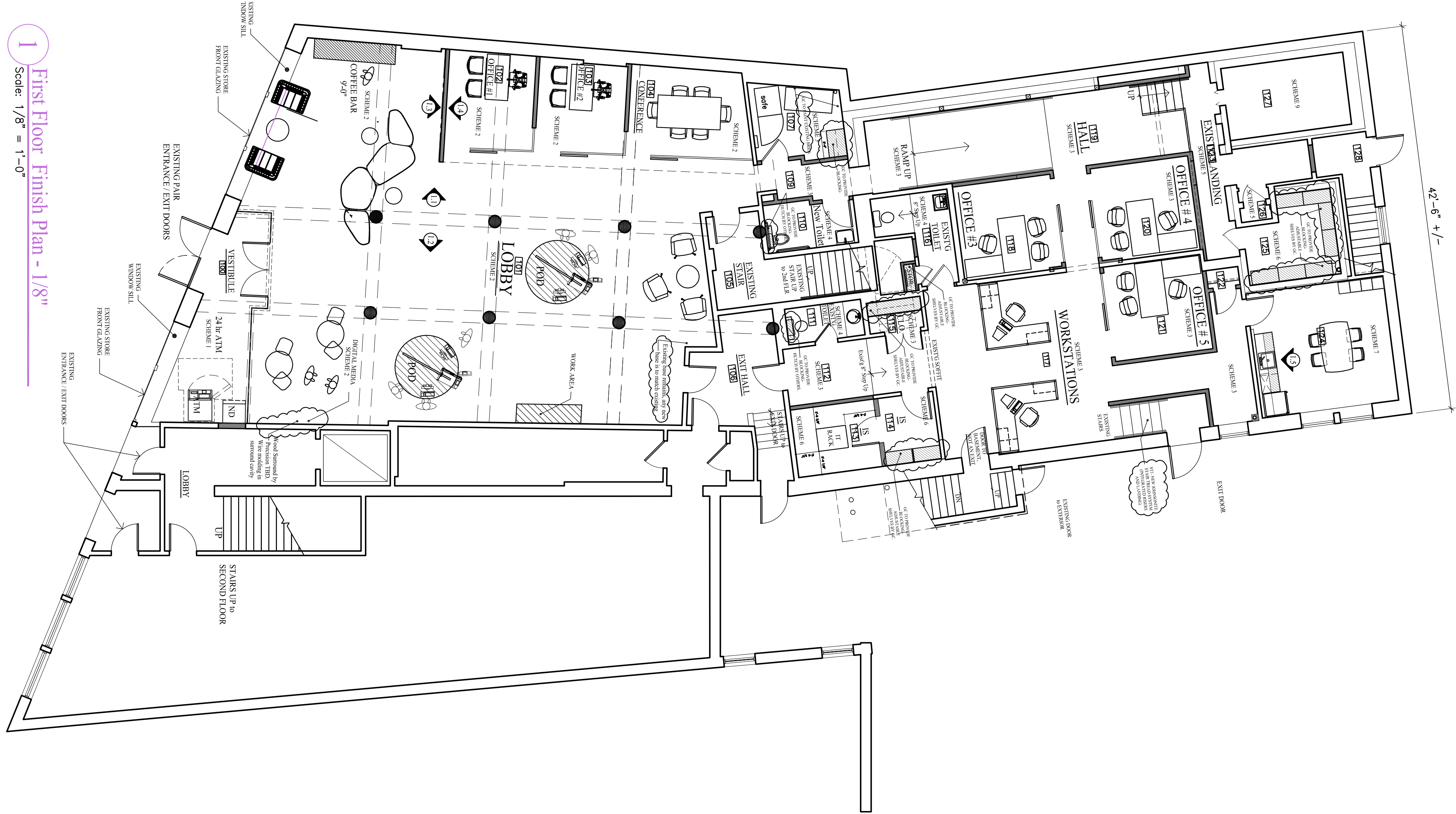


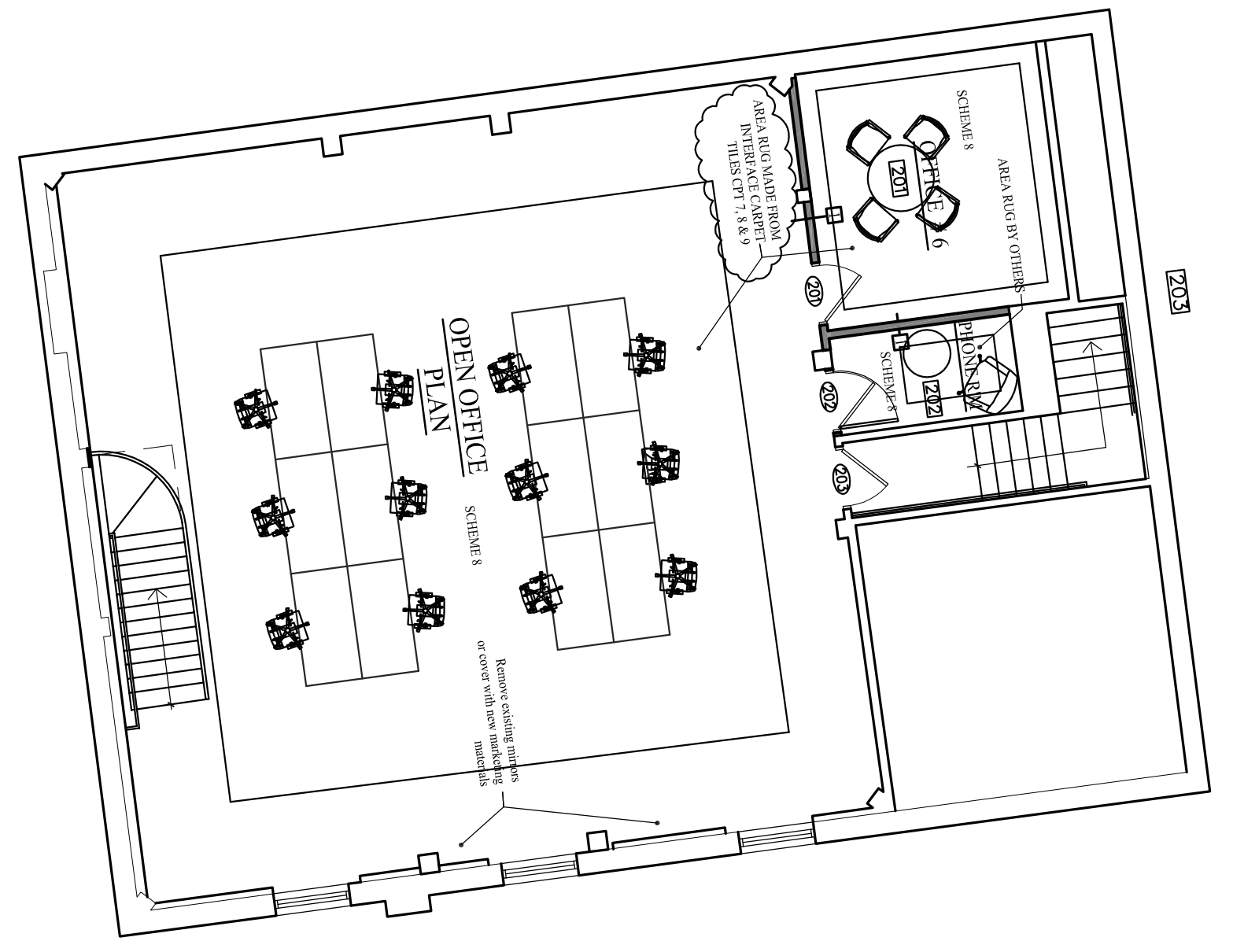
**1** First Floor Finish Plan - 1/8"

Scale: 1/8" = 1'-0"



**2** Second Floor Carriage House Finish Plan - 1/8"

Scale: 1/8" = 1'-0"



Scheme 1 - Vestibule 100	FLOOR	CPT5		Scheme 5 - Existing Landing & Closet 126	FLOOR	WD1	
	BASE	VB1			BASE	VB1	
	WALLS	PNT			WALLS	PNT	
	CEILING	PNT			CEILING	GWB CEILING-PNT	
	DOORS	PNT			DOORS	PNT	
	Door Frame	PNT			Door Frame	PNT	
Scheme 2 - Lobby 101, Offices 102, 103, 104	FLOOR	CPT1, CPT2, CPT3, CPT4		Scheme 6 - Storage 127, 125, 114, 113	FLOOR	LV11, TS2	
	BASE	WB1			BASE	VB1	
	WALLS	PNT			WALLS	PNT	
	CEILING	PNT			CEILING	ACT 1	
	DOORS	PNT			DOORS	PNT	
	Door Frame	PNT			Door Frame	PNT	
Scheme 3 - 108, 107, 112, 115, 117, 118, 119, 120, 121 & 122	FLOOR	CPT6		Scheme 7 - Kitchen 124	FLOOR	LV1	
	BASE	VB1			BASE	VB1	
	WALLS	PNT			WALLS	PNT	
	CEILING	PNT			CEILING	PNT EXISTING?	
	DOORS	PNT			DOORS	PNT	
	Door Frame	PNT			Door Frame	PNT	
Scheme 4 - Toilets 110, 111, 116	FLOOR	T1, GT1, D1 & TS1		Scheme 8 - Carriage House 200, 201, 202	FLOOR	CPT 7, 8, 9 (SEE F1.2 & F1.3 FOR LAYOUT)	
	BASE	TB1			BASE	PNT EXISTING?	
	WALLS	PNT			WALLS	PNT	
	CEILING	GWB CEILING-PNT			CEILING	PNT EXISTING?	
	DOORS	PNT			DOORS	PNT	
	Door Frame	PNT			Door Frame	PNT	
Scheme 9 - 127 (Zan Room)	FLOOR	WD1			CEILING	ACT2	
	BASE	TBD			DOORS	PNT	
	WALLS	PNT			Door Frame	PNT	

CPT1	CARPET	INTERFACE HUMAN NATURE HN810 104217 PUWICE PLANK ASHLAR INSTALL	SEE CARPET INSTALLATION PLAN (FN3) FOR EXACT LOCATIONS
CPT2	CARPET	INTERFACE HUMAN NATURE HN850 104209 PUWICE PLANK ASHLAR INSTALL	SEE CARPET INSTALLATION PLAN (FN3) FOR EXACT LOCATIONS
CPT3	CARPET	INTERFACE HUMAN NATURE HN840 104226 PUWICE PLANK ASHLAR INSTALL	SEE CARPET INSTALLATION PLAN (FN3) FOR EXACT LOCATIONS
CPT4	CARPET	INTERFACE VIVA COLORS 101162 MANDARINA 50CM CUT INTO PLANK - A1	SEE CARPET INSTALLATION PLAN (FN3) FOR EXACT LOCATIONS
CPT5	WALK OFF MAT	INTERFACE - STYLE AND COLOR TBD	
CPT6	CARPET	INTERFACE HUMAN NATURE HN820 104233 PUWICE PLANK ASHLAR INSTALL	SEE CARPET INSTALLATION PLAN (FN3) FOR EXACT LOCATIONS
CPT7	CARPET	INTERFACE ONLINE 103794 LAGOON PLANK ASHLAR INSTALL	SEE CARPET INSTALLATION PLAN (FN3) FOR EXACT LOCATIONS
CPT8	CARPET	INTERFACE ONLINE 103265 EMERALD PLANK ASHLAR INSTALL	SEE CARPET INSTALLATION PLAN (FN3) FOR EXACT LOCATIONS
CPT9	CARPET	INTERFACE ONLINE 103264 GRASS PLANK ASHLAR INSTALL	SEE CARPET INSTALLATION PLAN (FN3) FOR EXACT LOCATIONS
LV1	LUX VINYL TILE	MOHAWK GROUP - SECORA 945 ALDER CREEK	SEE LVT INSTALLATION PLAN (FN3) FOR EXACT LOCATIONS
WD1	WOOD FLOORING	RESAWN-TIMBER NEWPORT-BLACK WALNUT FINISH-HARDWAX OIL	SEE LVT INSTALLATION PLAN (FN3) FOR EXACT LOCATIONS
VB1	VINYL BASE	JOHNSONITE 4" STRAIGHT VINYL BASE COLORED	
VB2	VINYL BASE	JOHNSONITE 4" COVE VINYL BASE COLORED	
WB1	WOOD BASE	4" CUSTOM STAINED WOOD BASE	
T1	PORCELAIN TILE	BEST TILE TRADE - IRON - 12" X 24"	
TB1	TILE BASE	BEST TILE TRADE - IRON - BULLNOSE 2 1/8" X 23 5/8"	
GT1	GROUT	TFC OR EQUAL - COLOR 941 RAVEN, 1/8" GROUT LINE	
D1	MEMBRANE	SCHLUTER DITRA- UNCOUPLING MEMBRANE UNDER PORCELAIN TILE	
TS1	TRANSITION	SCHLUTER SCHIENE - TILE TO CPT TRANSITIONS, STAINLESS	
TS2	TRANSITION	VINYL TRANS - STRIP JOHNSONITE CARPET TO LVT TRANSITIONS	
SW1	WD CLADDING	RESAWN-TIMBER NEWPORT-BLACK WALNUT FINISH-HARDWAX OIL	SEE INSTALLATION SPEC SHEET
CS1	CUST. STAIN	CUSTOM STAIN TO MATCH TLA'S CONTROL SAMPLE	
PT1	PAINT	BENJAMIN MOORE - COLOR TBD - SEE NOTES FOR PAINT APPLICATION	
PT2	PAINT	BENJAMIN MOORE - COLOR TBD - SEE NOTES FOR PAINT APPLICATION	
PT3	PAINT	BENJAMIN MOORE - COLOR TBD - SEE NOTES FOR PAINT APPLICATION	
PT4	PAINT	BENJAMIN MOORE - COLOR TBD - SEE NOTES FOR PAINT APPLICATION	
PT5	PAINT	BENJAMIN MOORE - COLOR TBD - SEE NOTES FOR PAINT APPLICATION	
PT6	PAINT	BENJAMIN MOORE - COLOR TBD - SEE NOTES FOR PAINT APPLICATION	
PT7	PAINT	BENJAMIN MOORE - COLOR TBD - SEE NOTES FOR PAINT APPLICATION	
PT8	PAINT	BENJAMIN MOORE - COLOR TBD - SEE NOTES FOR PAINT APPLICATION	
SF1	WDB-FEATURE	ARMSTRONG WOOD INDUSTRIES - CUSTOM VANDERKAM-GHIE - SEE NOTES BELOW	
ST1	STAIR TREADS	JOHNSONITE - Rubber Tread with Integrated Riser and Landing- Burnt Umber - Hammered Texture	

INTERIOR PAINTING NOTES

1. NO BASE ON DIRTY WALLS
2. NO BASE ON SPECIALTY MILLWORK FEATURES
3. ALL SPECIALTY MILLWORK FIXTURES BY TLA
4. WINDOW TREATMENTS BY TLA
5. ALL FLOORING BY TLA
6. ALL MAJOR FLOORING PREP BY TLA'S FLOORING CONTRACTOR WITH EXCEPTION TO THE CARRIAGE HOUSE FLOOR - G.C. TO MAKE GOOD EXISTING FLOORS, IE. CLEANING, SANDING OR ADDITIONAL WORK AS NEEDED TO BRING FLOORS TO AN ACCEPTABLE FINISHED STANDARD.

INTERIOR FINISH NOTES

1. NO BASE ON DIRTY WALLS
2. NO BASE ON SPECIALTY MILLWORK FEATURES
3. ALL SPECIALTY MILLWORK FIXTURES BY TLA
4. WINDOW TREATMENTS BY TLA
5. ALL FLOORING BY TLA
6. ALL MAJOR FLOORING PREP BY TLA'S FLOORING CONTRACTOR WITH EXCEPTION TO THE CARRIAGE HOUSE FLOOR - G.C. TO MAKE GOOD EXISTING FLOORS, IE. CLEANING, SANDING OR ADDITIONAL WORK AS NEEDED TO BRING FLOORS TO AN ACCEPTABLE FINISHED STANDARD.

SPF (Custom Woodworks Gille):  
 Panel Size: Custom - TBD by Armstrong & architectural drawings - Wood Species: Yellow Poplar  
 Wood Finish: Standard - Blade Size and Spacing: 3 - 1/4" or 4 - 1/4" with 2 Blade Per foot  
 (5" spacing between each blade) - Product: Armstrong World Industries, Custom Woodworks Gille by Architectural  
 Specialties, Solid Wood Dowel Panels with Custom Millwork Ceiling to Mill Transition  
 Please note: wall members anchor to the floor. Please contact Armstrong rep (David Durfee (978) 759-0339)

REPRESENTS SPECIALTY MILLWORK FIXTURES BY TLA

**F1.1**  
 sheet number  
 issued: 6.24.2016  
 project no. 1601

CONSTRUCTION 6.24.2016

Machias Savings Bank  
 193 Middle Street, Portland, Maine  
 1st & 2nd Floor Finish Plan

Rev No3	7.25.2016	FLOORING RM.127, RM.201/202	
Rev No2	7.11.2016	ADDED LVT SPEC	
Rev No1	7.6.2016	Change to WD1 & SW1	
Rev. No.	Date	Description	Drawn by: JFD

**tda** inc.  
 creative • design • solutions

400 US Route One, Suite A South  
 Falmouth, ME 04105  
 Tel: (207) 842-6260  
 Fax: (207) 842-6271  
 1 (800) 232-2253

Joe DiDonato

2124