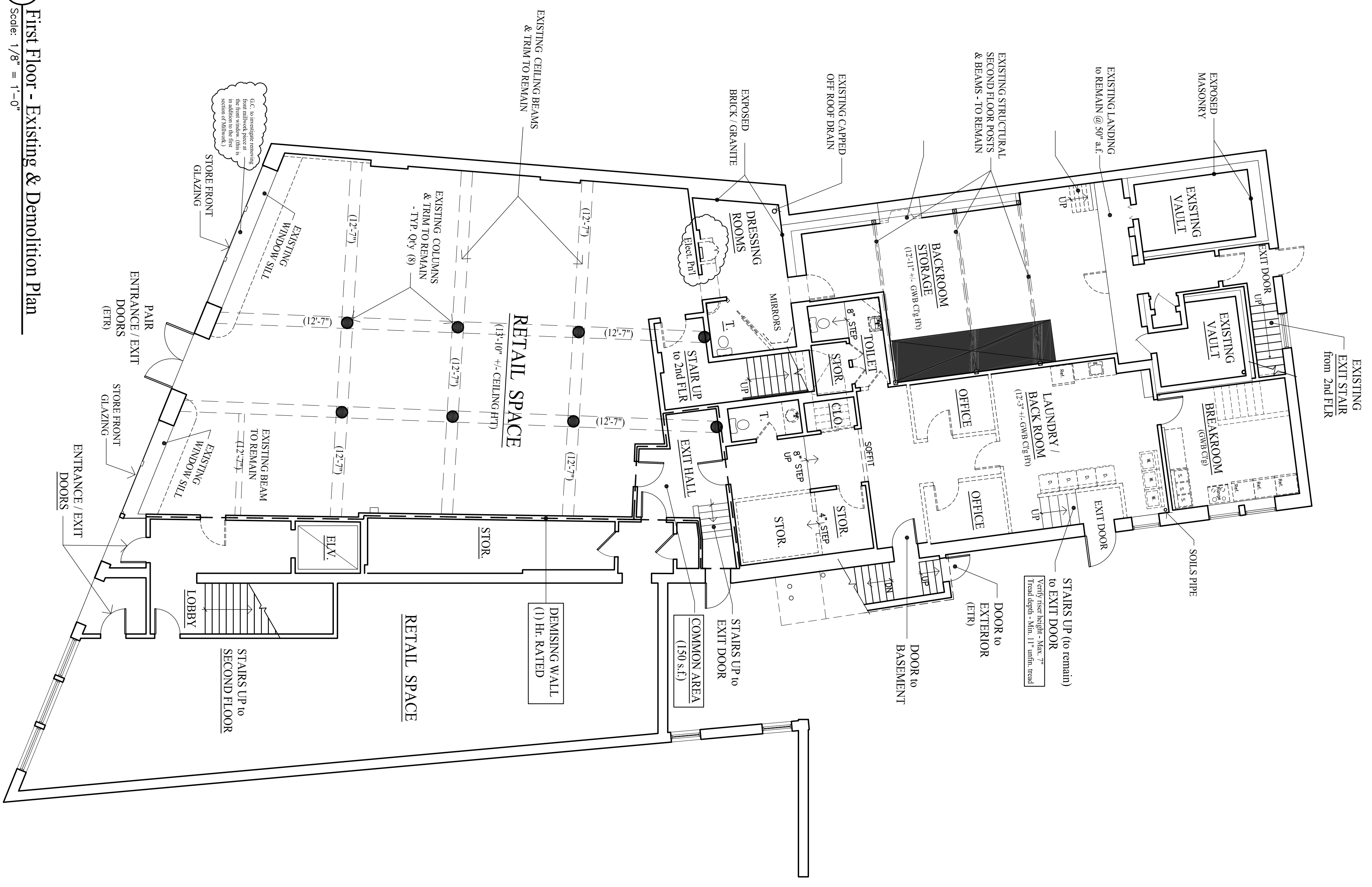
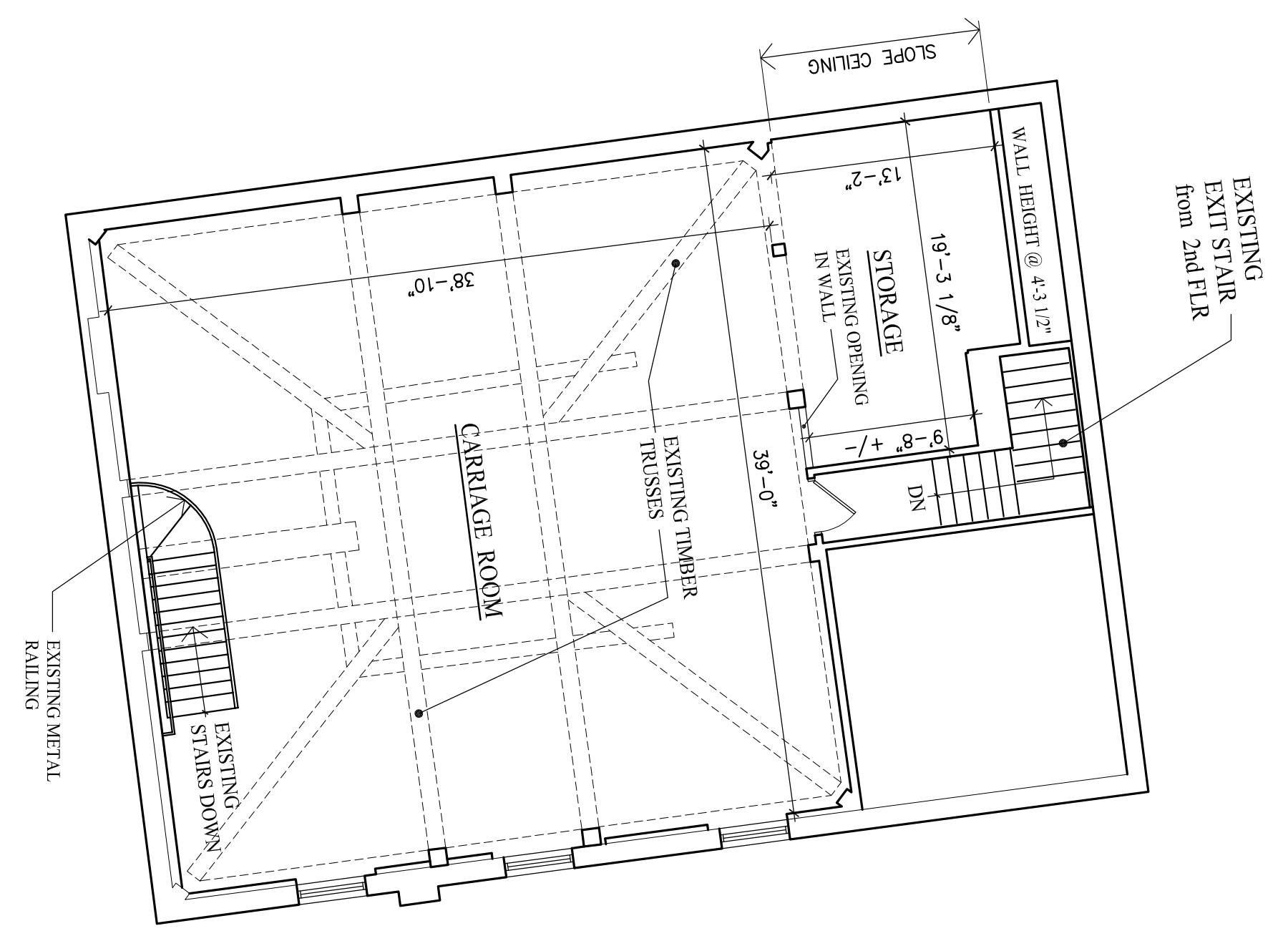


1 First Floor - Existing & Demolition Plan
 Scale: 1/8" = 1'-0"



2 Second Floor Carriage House - Existing Plan
 Scale: 1/8" = 1'-0"



Ec1.0
 sheet number
 issued: 06-24-16
 project no. 1601

Construction Set 06/24/16
 Machias Savings Bank
 193 Middle Street, Portland, Maine
 Existing Conditions and Demolition Plans

Rev. No.	Date	Description	Drawn by:
Rev No1	7.25.16	Demo of closet in room 107	JFD
Rev. No.			

tla inc.
 creative • design • solutions
 400 US Route One, Suite A South
 Falmouth, ME 04105
 Tel: (207) 842-6260
 Fax: (207) 842-6271
 1 (800) 232-2253

Joe DiDonato
 2124