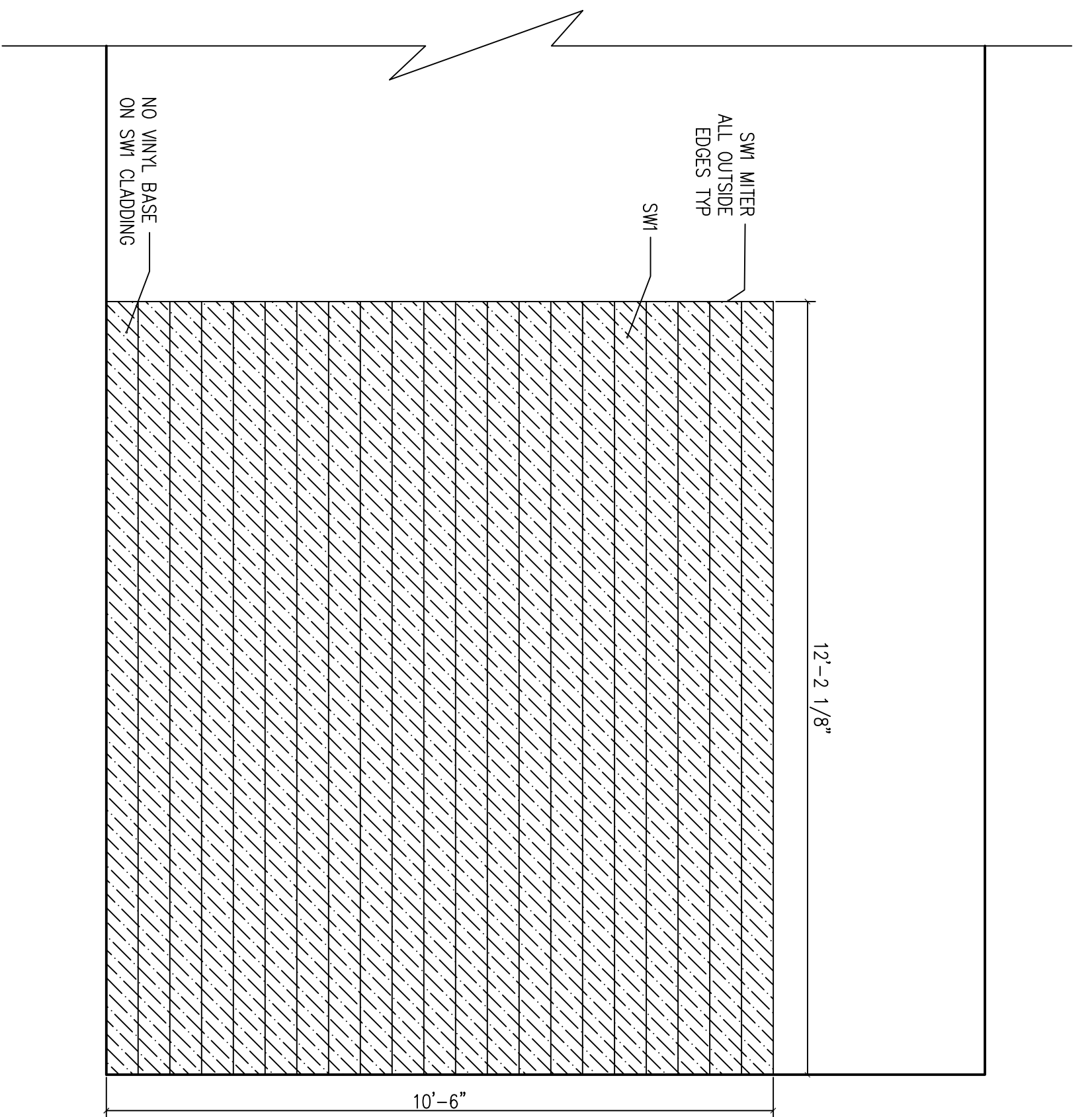
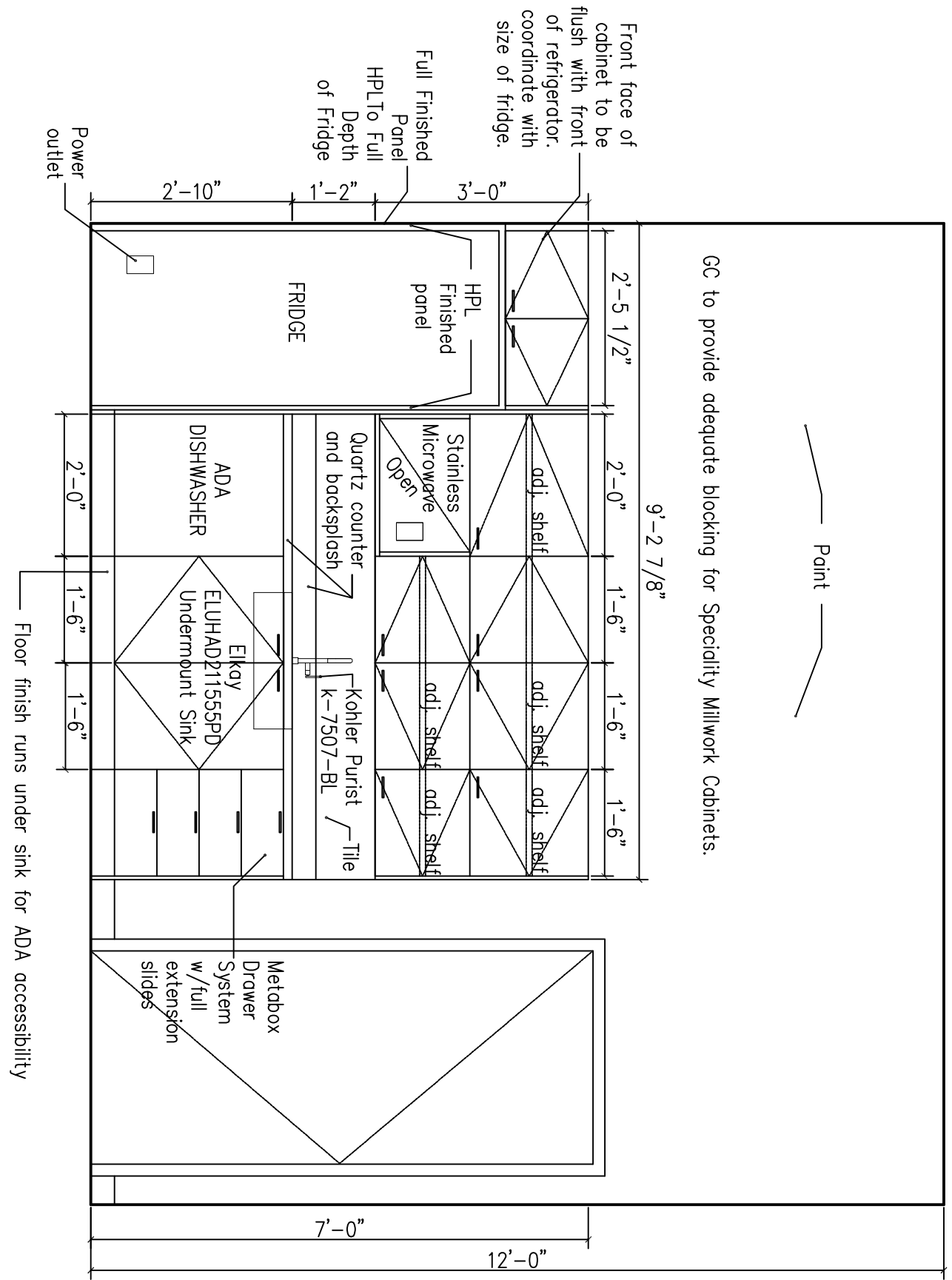


1.3 EXTERIOR OFFICE WOOD CLADDING ELEVATION  
1/2" = 1'-0"



1.4 INTERIOR OFFICE WOOD CLADDING ELEVATION  
1/2" = 1'-0"



1.5 KITCHEN ELEVATION  
1/2" = 1'-0"

**A5.2**  
sheet number  
issued: 6.24.2016  
project no. 1601

CONSTRUCTION 6.24.2016  
Machias Savings Bank  
193 Middle Street, Portland, Maine  
1st & 2nd Floor Interior Elevations

Rev. No.	Date	Description	Drawn by: JFD

**tla** inc.  
creative • design • solutions  
400 US Route One, Suite A South  
Falmouth, ME 04105  
Tel: (207) 842-6260  
Fax: (207) 842-6271  
1 (800) 232-2253

Joe DiDonato  
2124