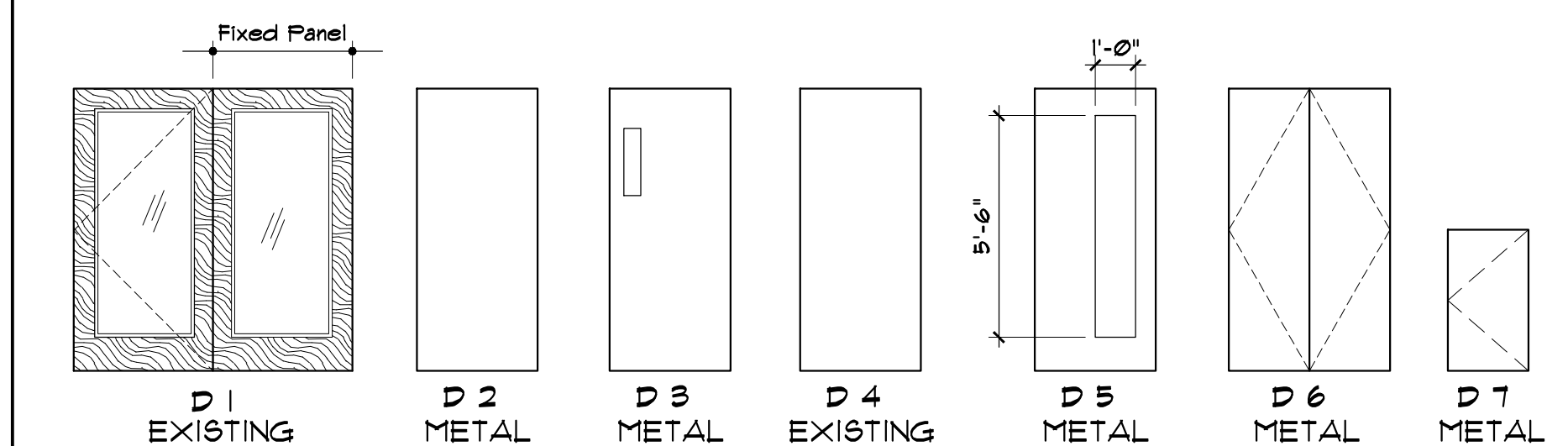


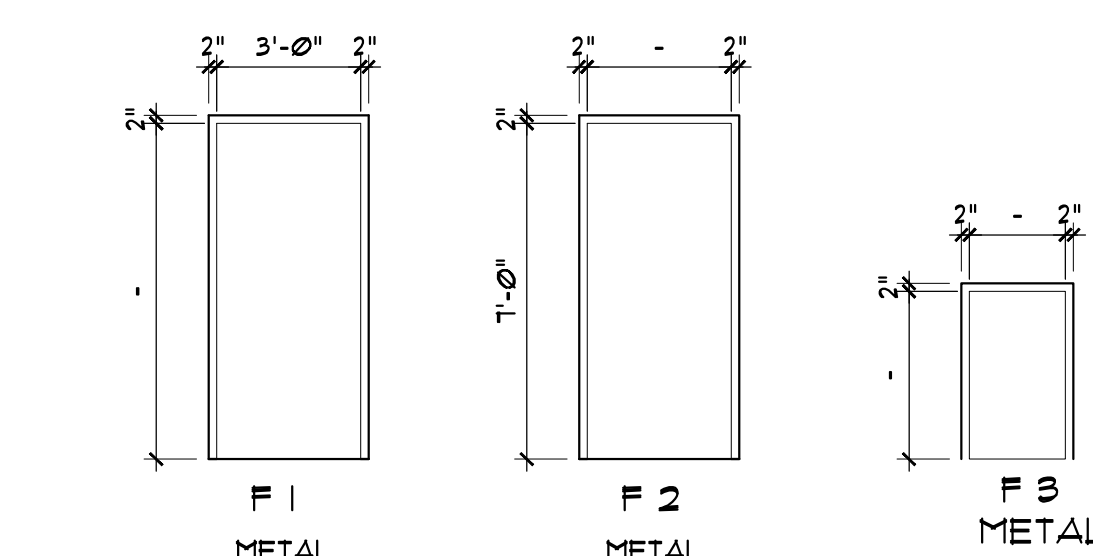
DOOR SCHEDULE

| NO. | ROOM | NAME | TYPE | SIZE | THK. | MAT. | GLASS | RATING | MAT. | TYPE | SILL | RATING | WALL THICKNESS | REMARKS |
|------|------------------|------|-----------|---------------------|--------|---|-----------|---------|--------------------------------|------|------|---------|----------------|---|
| 100 | VESTIBULE | D 1 | PAIR DR'S | 3'-6" x 8'-3 1/2" | 1 3/4" | WOOD | TEMP. | - | WOOD | - | - | - | - | EXISTING DOORS AND FRAME TO REMAIN - SEE NOTE # 1 |
| 101 | LOBBY | - | PAIR DR'S | 3'-0" x 9'-0" | - | DIRT ARCHITECTURAL WALL BY TLA - SEE DIRT CONSTRUCTION DRWG'S | - | - | - | - | - | - | - | 30" BAR FULL - FINISH. |
| 102 | OFFICE # 1 | - | - | 3'-0" x 9'-0" | - | DIRT ARCHITECTURAL WALL BY TLA - SEE DIRT CONSTRUCTION DRWG'S | - | - | - | - | - | - | - | 30" BAR FULL - FINISH. |
| 103 | OFFICE # 2 | - | - | 3'-0" x 9'-0" | - | DIRT ARCHITECTURAL WALL BY TLA - SEE DIRT CONSTRUCTION DRWG'S | - | - | - | - | - | - | - | 30" BAR FULL - FINISH. |
| 104 | CONFERENCE | - | - | 3'-0" x 9'-0" | - | DIRT ARCHITECTURAL WALL BY TLA - SEE DIRT CONSTRUCTION DRWG'S | - | - | - | - | - | - | - | 30" BAR FULL - FINISH. |
| 105 | EXISTING STAIR | D 3 | - | 3'-0" x 7'-0" | 1 3/4" | METAL | 5x20 W.G. | 90 MIN. | METAL | F 1 | - | 90 MIN. | 5 3/4" | SEE NOTE # 2 |
| 106A | EXIT HALL | D 3 | - | 3'-0" x 6'-8" | 1 3/4" | METAL | 5x20 W.G. | 90 MIN. | METAL | F 1 | - | 90 MIN. | 1 1/4" | CLOSURE |
| 106B | EXIT HALL | D 4 | - | 3'-0" x 6'-8" | 1 3/4" | WOOD | - | 90 MIN. | METAL | F 1 | - | 90 MIN. | - | SEE NOTE # 3 |
| 106C | EXIT HALL | D 4 | - | 3'-0" x 6'-8" | 1 3/4" | WOOD | - | 90 MIN. | METAL | F 1 | - | 90 MIN. | - | EXISTING DOOR AND TRIM TO BE PAINTED, EXISTING CLOSURE |
| 106D | EXIT HALL | D 4 | - | 3'-0" x 6'-8" | 1 3/4" | WOOD | - | - | WOOD | - | - | - | 5 1/4" | SEE NOTE # 4 |
| 107 | NEW WORKROOM | D 5 | - | 3'-0" x 7'-0" | 1 3/4" | METAL | 12x66 | - | METAL | F 2 | - | - | 4 5/8" | CLOSURE / CARD READER ACCESS (CRA) |
| 108 | ELECTRIC CLOSET | D 2 | - | 2'-0" x 7'-0" | 1 3/4" | METAL | - | - | METAL | F 2 | - | - | 4 5/8" | RE-FRAME EXISTING OPENING |
| 109 | HALL | - | - | - | - | NO DOOR THIS NUMBER | - | - | NO FRAME THIS NUMBER | - | - | - | - | - |
| 110 | NEW ADA TOILET | D 2 | - | 3'-0" x 7'-0" | 1 3/4" | METAL | - | - | METAL | F 2 | - | - | 4 5/8" | CLOSURE |
| 111 | EXISTING TOILET | D 2 | - | 2'-6" x 6'-8" | 1 3/4" | METAL | - | - | METAL | F 2 | - | - | 5 3/4" | RE-FRAME EXISTING OPENING, JAMB TBV |
| 112 | HALL | - | - | - | - | NO DOOR THIS NUMBER | - | - | NO FRAME THIS NUMBER | - | - | - | - | - |
| 113 | IT ROOM | D 2 | - | 3'-0" x 7'-0" | 1 3/4" | METAL | - | - | METAL | F 2 | - | - | 4 5/8" | CLOSURE / CARD READER ACCESS (CRA) |
| 114 | STORAGE | D 2 | - | 3'-0" x 7'-0" | 1 3/4" | METAL | - | - | METAL | F 2 | - | - | - | SEE NOTE # 5 |
| 115 | CLOSET | D 6 | PAIR | 2'-0" x 7'-0" | 1 3/4" | METAL | - | - | METAL | F 2 | - | - | 1 1/4" | RE-FRAME EXISTING OPENING |
| 116A | EXISTING TOILET | D 2 | - | 3'-0" x 7'-0" | 1 3/4" | METAL | - | - | METAL | F 2 | - | - | 1 1/4" | RE-FRAME EXISTING OPENING |
| 116B | STORAGE | D 7 | - | 2'-0" x 3'-10" | 1 3/4" | METAL | - | - | METAL | F 3 | - | - | 4 5/8" | SEE NOTE # 6 |
| 117A | WORK STATIONS | D 2 | - | 4'-0" x 7'-0" | 1 3/4" | METAL | - | - | - | - | - | - | - | EXISTING FRAME TO REMAIN |
| 117B | WORK STATIONS | D 2 | - | EXISTING 3'-0" DOOR | 1 3/4" | METAL | - | 90 MIN. | METAL | - | - | 90 MIN. | - | EXISTING DOOR AND FRAME WITH CLOSURE TO REMAIN, TO BE ALARMED |
| 118 | OFFICE # 3 | - | - | 3'-0" x 8'-0" | - | DIRT ARCHITECTURAL WALL BY TLA - SEE DIRT CONSTRUCTION DRWG'S | - | - | - | - | - | - | - | 30" BAR FULL - FINISH. |
| 119 | HALL | - | - | - | - | NO DOOR THIS NUMBER | - | - | NO FRAME THIS NUMBER | - | - | - | - | - |
| 120 | OFFICE # 4 | - | - | 3'-0" x 8'-0" | - | DIRT ARCHITECTURAL WALL BY TLA - SEE DIRT CONSTRUCTION DRWG'S | - | - | - | - | - | - | - | 30" BAR FULL - FINISH. |
| 121 | OFFICE # 5 | - | - | 3'-0" x 8'-0" | - | DIRT ARCHITECTURAL WALL BY TLA - SEE DIRT CONSTRUCTION DRWG'S | - | - | - | - | - | - | - | 30" BAR FULL - FINISH. |
| 122 | CLOSET | D 2 | - | 2'-6" x 7'-0" | 1 3/4" | METAL | - | - | METAL | F 2 | - | - | - | - |
| 123 | EXISTING LANDING | - | - | - | - | NO DOOR THIS NUMBER | - | - | NO FRAME THIS NUMBER | - | - | - | - | - |
| 124 | BREAKROOM | D 5 | - | 3'-0" x 7'-0" | 1 3/4" | METAL | 12x66 | - | METAL | F 2 | - | - | 4 7/8" | - |
| 125 | STORAGE | - | - | - | - | EXISTING STEEL DOOR TO REMAIN | - | - | EXISTING STEEL FRAME TO REMAIN | - | - | - | - | SEE NOTE # 10 |
| 126 | STORAGE | - | - | - | - | EXISTING STEEL DOOR TO REMAIN | - | - | EXISTING STEEL FRAME TO REMAIN | - | - | - | - | SEE NOTE # 10 |
| 127 | STORAGE | - | - | - | - | EXISTING STEEL DOOR TO REMAIN | - | - | EXISTING STEEL FRAME TO REMAIN | - | - | - | - | SEE NOTE # 10 |
| 128 | EXIT STAIR | D 2 | - | 3'-0" x 6'-4 1/4" | 1 3/4" | METAL | - | - | - | - | - | - | - | EXIT DOOR ONLY, SEE NOTE # 8 |
| 200 | OPEN OFFICE | - | - | - | - | NO DOOR THIS NUMBER | - | - | NO FRAME THIS NUMBER | - | - | - | - | - |
| 201 | OPEN OFFICE | D 5 | - | 3'-0" x 7'-0" | 1 3/4" | METAL | TEMP. | - | METAL | F 2 | - | - | - | - |
| 202 | PHONE ROOM | D 5 | - | 3'-0" x 7'-0" | 1 3/4" | METAL | TEMP. | - | METAL | F 2 | - | - | - | - |
| 203 | EXIT STAIR | D 2 | - | 3'-0" x 6'-8" | 1 3/4" | METAL | - | 90 MIN. | - | - | - | - | - | EXISTING FRAME TO REMAIN |



DOOR ELEVATIONS

SCALE: 1/4" = 1'-0"



FRAME TYPES

SCALE: 1/4" = 1'-0"

DOOR SCHEDULE ABBREVIATIONS

| | | |
|------------------------------|---------------------------|------------------|
| ALUM. ALUMINUM | DP DOOR PULL | FP FISH / FULL |
| AO AUTOMATIC OPERATOR | FR FIRE RATED | SC SOLID CORE |
| CLO CLOSURE | HC HANDICAP | SH SPRING HINGE |
| CRA CARD READER ACCESS | INS INSULATED | S, LTS SIDELITES |
| ED EXIT DEVICE (PH) | KPL KEY PAD LOCK - B OF | TEMP TEMPERED |
| EMHO ELECTRO HOLD OPENER | LP LOW PROFILE - 1/2" Max | THK THICKNESS |
| ES ELECTRIC STRIKE - 12 V DC | MIN MINUTE | UD WOOD |
| ETR EXISTING TO REMAIN | MTL METAL | WG WIRE GLASS |
| EXT EXTERIOR | NR NUMBER | |
| DR DOOR | | |

REMARKS

EXISTING DOORS AND FRAME TO REMAIN - SEE NOTE # 1

30" BAR FULL - FINISH.

DIRT ARCHITECTURAL WALL BY TLA - SEE DIRT CONSTRUCTION DRWG'S

30" BAR FULL - FINISH.

DIRT ARCHITECTURAL WALL BY TLA - SEE DIRT CONSTRUCTION DRWG'S

30" BAR FULL - FINISH.

DIRT ARCHITECTURAL WALL BY TLA - SEE DIRT CONSTRUCTION DRWG'S

30" BAR FULL - FINISH.

SEE NOTE # 2

CLOSURE

SEE NOTE # 3

EXISTING DOOR AND TRIM TO BE PAINTED, EXISTING CLOSURE

SEE NOTE # 4

CLOSURE / CARD READER ACCESS (CRA)

RE-FRAME EXISTING OPENING

NO DOOR THIS NUMBER

NO FRAME THIS NUMBER

CLOSURE

RE-FRAME EXISTING OPENING, JAMB TBV

NO DOOR THIS NUMBER

NO FRAME THIS NUMBER

CLOSURE / CARD READER ACCESS (CRA)

SEE NOTE # 5

RE-FRAME EXISTING OPENING

RE-FRAME EXISTING OPENING

SEE NOTE # 6

SEE NOTE # 1

EXISTING DOOR AND FRAME WITH CLOSURE TO REMAIN, TO BE ALARMED

DIRT ARCHITECTURAL WALL BY TLA - SEE DIRT CONSTRUCTION DRWG'S

30" BAR FULL - FINISH.

NO DOOR THIS NUMBER

NO FRAME THIS NUMBER

DIRT ARCHITECTURAL WALL BY TLA - SEE DIRT CONSTRUCTION DRWG'S

30" BAR FULL - FINISH.

DIRT ARCHITECTURAL WALL BY TLA - SEE DIRT CONSTRUCTION DRWG'S

30" BAR FULL - FINISH.

NO DOOR THIS NUMBER

NO FRAME THIS NUMBER

EXISTING STEEL DOOR TO REMAIN

EXISTING STEEL FRAME TO REMAIN

SEE NOTE # 10

EXISTING STEEL DOOR TO REMAIN

EXISTING STEEL FRAME TO REMAIN

SEE NOTE # 10

EXISTING STEEL DOOR TO REMAIN

EXISTING STEEL FRAME TO REMAIN

SEE NOTE # 10

EXIT DOOR ONLY, SEE NOTE # 8

NO DOOR THIS NUMBER

NO FRAME THIS NUMBER

NO DOOR THIS NUMBER

NO FRAME THIS NUMBER

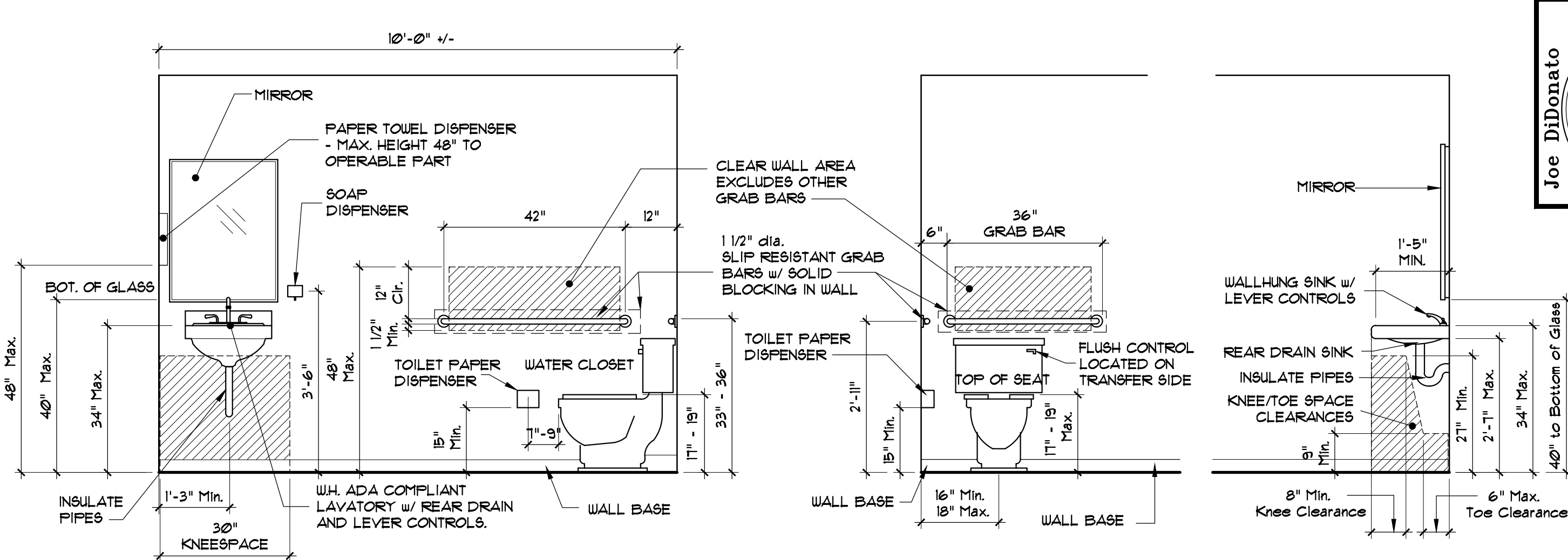
EXISTING STEEL DOOR TO REMAIN

EXISTING STEEL FRAME TO REMAIN

EXIT DOOR ONLY, SEE NOTE # 8

GENERAL NOTES:

- FIX RHR DOOR PANEL, CARD READER ACCESS (CRA), REPLACE H.C. THRESHOLD & HARDWARE, PATCH STRIKE, PATCH EXISTING DEAD LOCK PREP, NEW RIM, NEW EXIT DEVICE, NEW CLOSURE, NEW WEATHERSTRIP (W/P).
- NEW CLOSURE, USE EXISTING ELECTROMAGNETIC DOOR HOLDER.
- PAINT EXISTING WOOD DOOR AND FRAME, EXISTING CLOSURE.
- RE-FRAME DOOR OPENING, NEW 3060 DOOR, NEW WEATHERSTRIP AND CLOSURE.
- RE-FRAME DOOR OPENING, NEW CLOSURE.
- RE-FRAME DOOR OPENING WITH 2x4's, JAMB THICKNESS TBV.
- NEW 4070 DOOR, NEW CLOSURE, NEW WEATHERSTRIPPING, CARD READER ACCESS (CRA), EXT DEVICE, EXISTING FRAME TO REMAIN.
- NEW DOOR IN EXISTING FRAME, CUT FRAME FLUSH TO EXIST'S SUBFLOOR, EXIT ONLY DEVICE, CLOSURE, WEATHERSTRIP OPENING, NO OUTSIDE DOOR TRIM, EXISTING ALARM CONTACT.
- DOORS, FRAMES AND HARDWARE BY HARDWARE CONSULTANTS: 12 SKYVIEW DRIVE, CUMBERLAND, ME. CONTACT CHARLES TARTE 207-829-8643. NO SUBSTITUTIONS WILL BE ACCEPTED. G.C. TO CO-ORDINATE WITH HARDWARE CONSULTANTS.
- ALL HARDWARE SHALL COMPLY WITH A.D.A. REQUIREMENT AND STANDARDS.
- ALL DOORS SHALL HAVE LEVER HANDLES.
- HARDWARE FINISH - "TBD".
- KD STEEL DOOR FRAMES: PAINTED - (REFER TO FINISH SCHEDULE)
- CONTRACTOR TO FIELD VERIFY ALL OPENINGS BEFORE FABRICATION.
- GLAZING: REFER TO MANUFACTURER FOR SAFETY GLAZING.
- DOOR MANUFACTURER TO VERIFY ALL DOOR JAMBS IN EXISTING PARTITIONS.
- NEW DOORS IN EXISTING WALL OPENINGS TO BE FRAMED FOR 7'-0" DOOR HEIGHT AND DESIGNATED DOOR WIDTH IF REQUIRED (UNO).
- EXISTING STEEL VAULT DOORS TO BE RE-HUNG / CLEANED AND PAINTED (REFER TO FINISH PLAN)



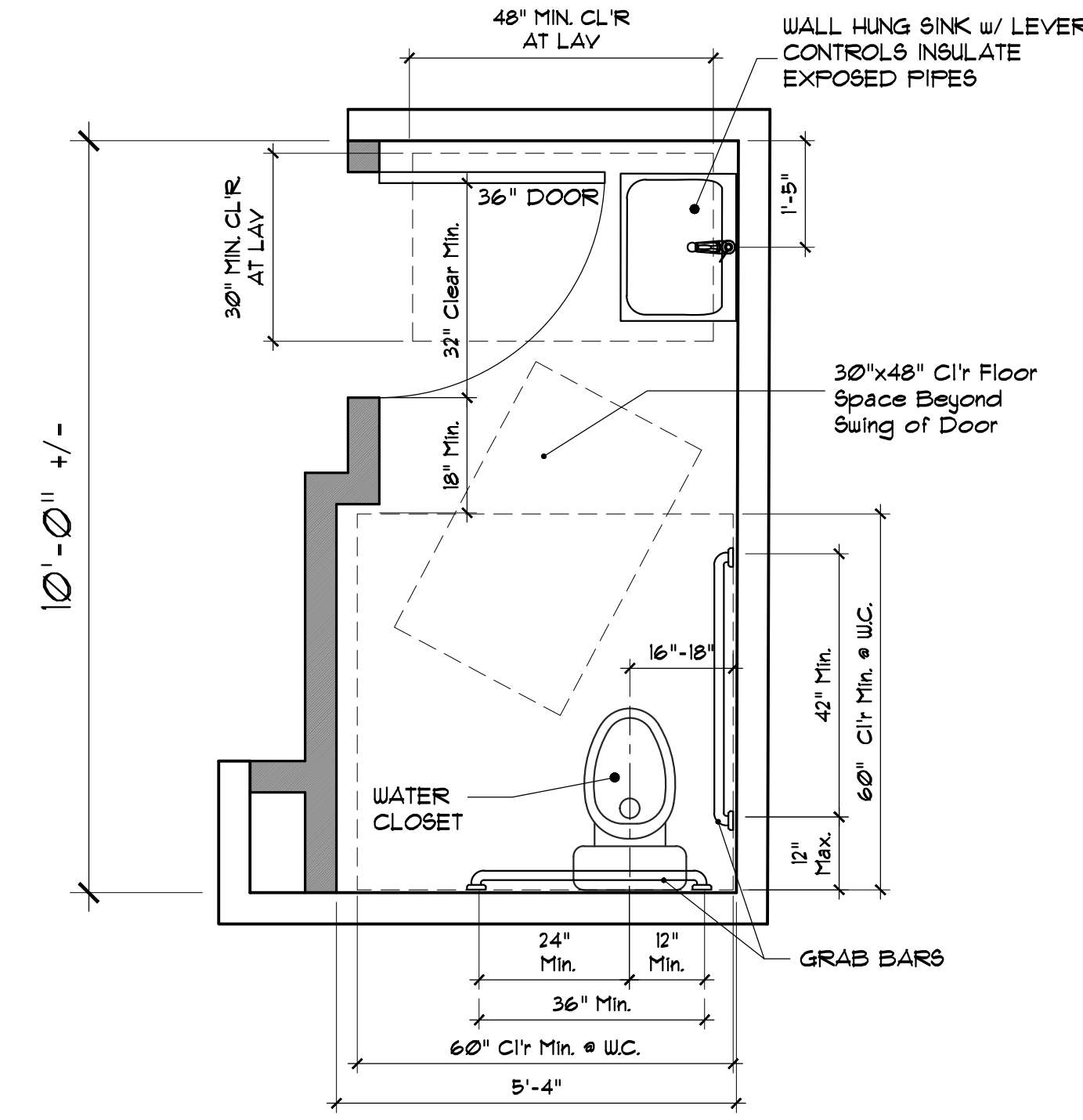
TOILET - ADA ACCESSIBLE ELEVATIONS

Scale: 1/2" = 1'-0"

REQUIRED FLOOR CLEARANCES FOR TYPICAL SINGLE OCCUPANCY TOILET

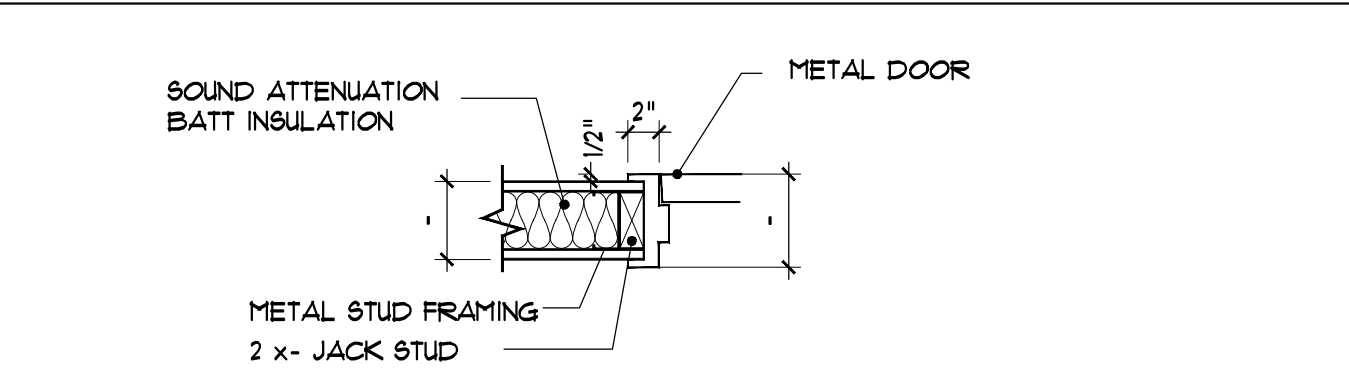
Scale: 1/2" = 1'-0"

- DIMENSIONS ARE TO FINISH SURFACES.
- IF DOOR SWINGS OUT THE MINIMUM LATCH-SIDE DOOR CLEARANCE IS 12" AT THE "PUSH SIDE".
- AN IN-SWING DOOR IS ALLOWED TO OVERLAP CLEAR FLOOR SPACES FOR THE LAVATORY AND THE WATER CLOSET, NOT THE CLEAR 30"x48" FLOOR SPACE.



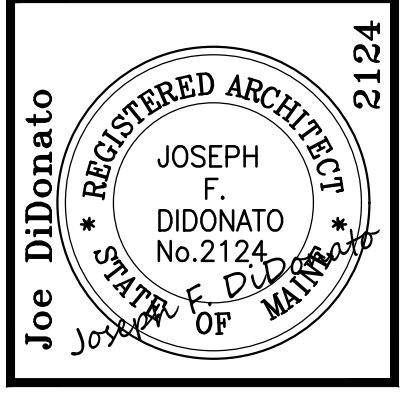
NEW ACCESSIBLE TOILET

Scale: 1/2" = 1'-0"



INT. MT'L D'R JAMB / HEAD DT'L - TYP.

Scale: 1" = 1'-0"



400 US Route One, Suite A South
Falmouth, ME 04105
Tel: (207) 842-6260
Fax: (207) 842-6271
1 (800) 232-2253



| Rev. No. | Date | Description | Drawn by: |
|----------|----------|----------------------------------|-----------|
| 1 | 07-26-16 | D'r 203-Delete Note, Add-Closure | JFD |

Construction Set: 06/24/16
Machias Savings Bank
193 Middle Street, Portland, Maine
Door Schedule

A3.0
sheet number
issued: 06-24-16
project no. 1601