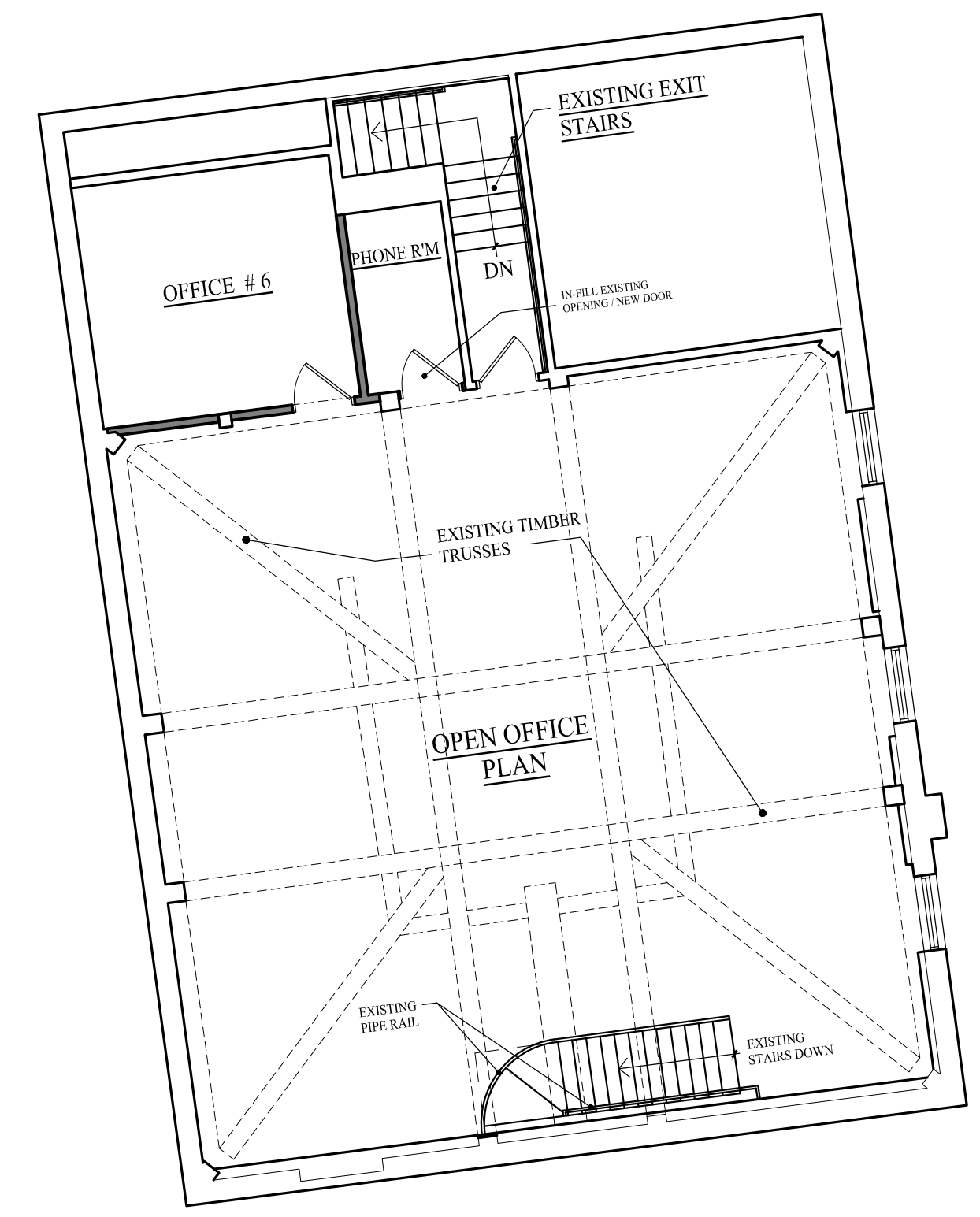


1 First Floor Plan - 1/8" (5,431 +/- s.f.)
 Scale: 1/8" = 1'-0" Total Area: (7,857 +/- s.f.)

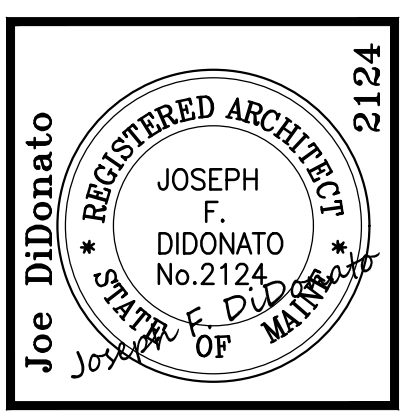


2 Second Floor Carriage House Plan - 1/8"
 Scale: 1/8" = 1'-0" (2,426 +/- s.f.)

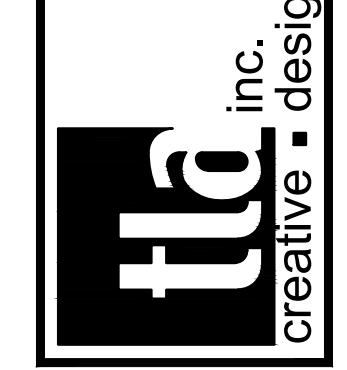
LAURA,
 Shelving ?????

REFER TO SHEET A1.2
 FOR 1/4" SCALE PLAN

REFER TO SHEET A1.1
 FOR 1/4" SCALE PLAN



400 US Route One, Suite A South
 Falmouth, ME 04105
 Tel: (207) 842-6260
 Fax: (207) 842-6271
 1 (800) 232-2253



Rev. No.	Date	Description	Drawn by: JFD

Construction Set: 06/24/16

Machias Savings Bank
 193 Middle Street, Portland, Maine
 1/8" First & Second Floor Plan

A1.0
 sheet number
 issued: 06-24-16
 project no. 1601