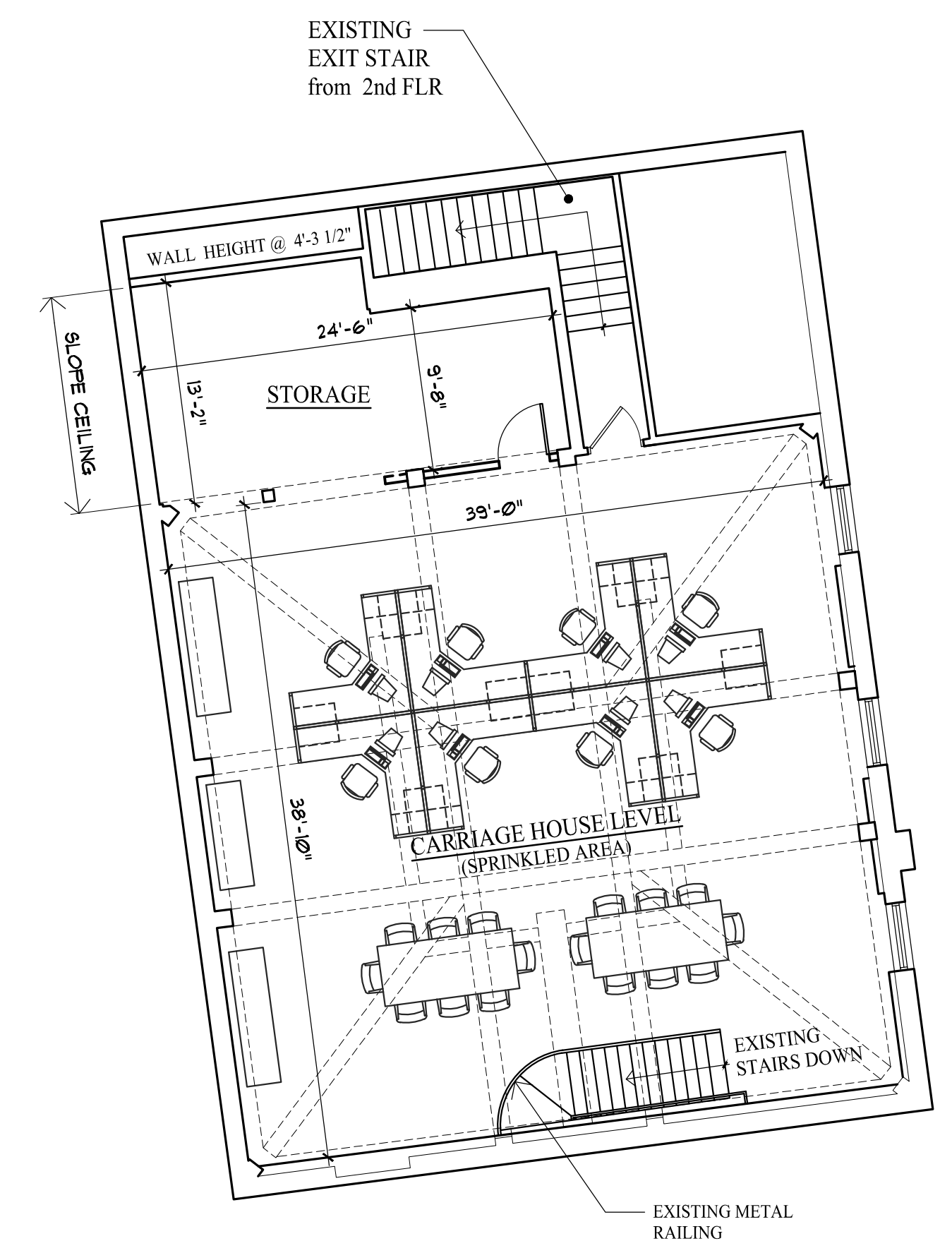
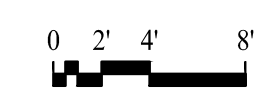


1 First Floor - Existing & Demolition Plan (5,431 +/- s.f.)
 Scale: 1/8" = 1'-0" Total Area: (7,857 +/- s.f.)



Second Floor Carriage House - Existing Plan
 Scale: 1/8" = 1'-0" (2,426 +/- s.f.)

Joe DiDonato
 2124

400 US Route One, Suite A South
 Falmouth, ME 04105
 Tel: (207) 842-6260
 Fax: (207) 842-6271
 1 (800) 232-2253



Rev. No.	Date	Description	Drawn by: JFD

Machias Savings Bank
 193 Middle Street, Portland, Maine
 Existing Conditions Plans

ECI	sheet number	project no.
	issued: -	-

Not For Construction 05-05-16