

**NOT FOR
CONSTRUCTION**

80 EXCHANGE STREET
PORTLAND, MAINE
OFFICE RENOVATION

BURN
architecture for life
9040 1/2 Ave., Portland, ME 04103

CONSULTANTS:

REVISIONS:

No.	Name	Date

ISSUED: 9/12/17

PROJECT No: 1714

DRAWN BY: LG

CHECKED BY:

SHEET TITLE:
EXTERIOR
PHOTOGRAPHS

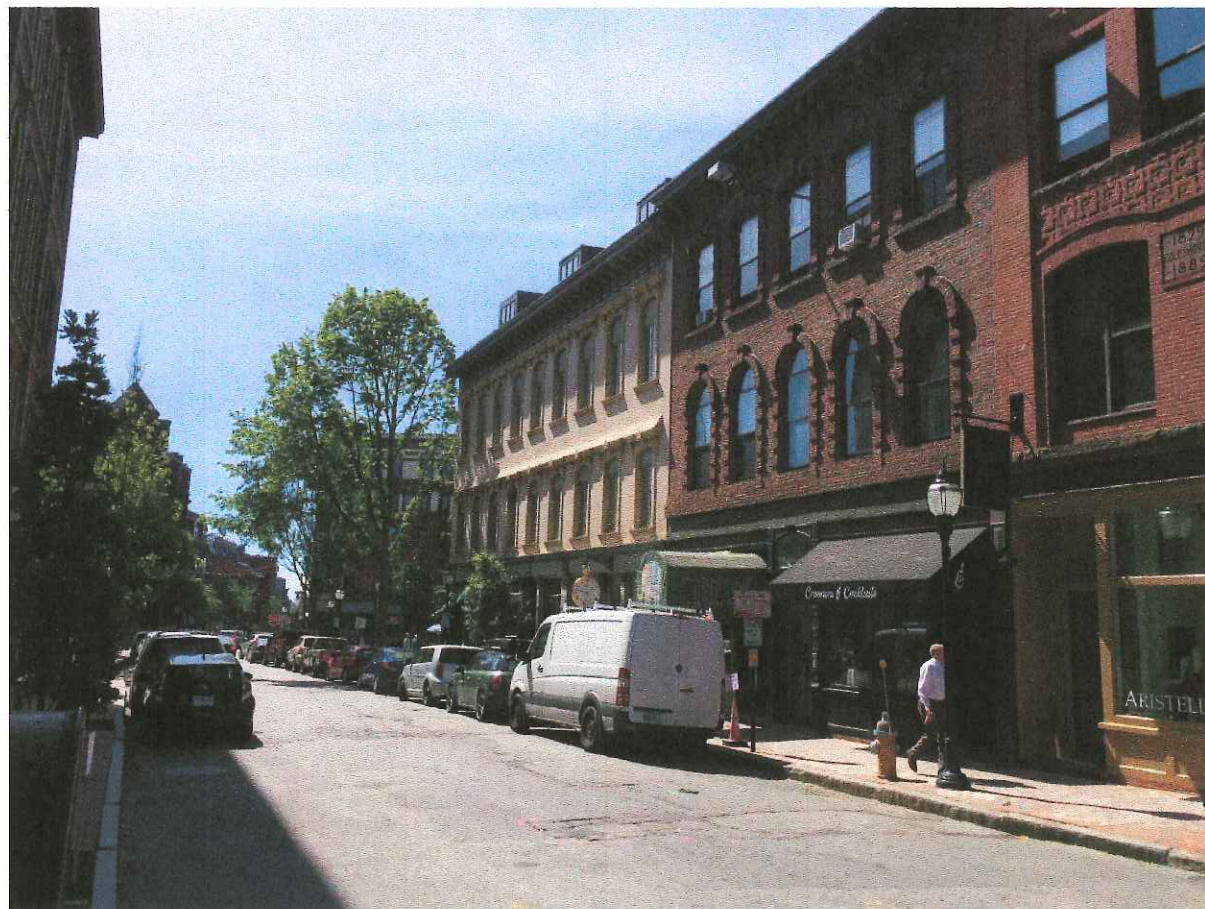
A204



EXCHANGE STREET ELEVATION



TOMMY'S PARK ELEVATION



EXCHANGE STREET ELEVATION LOOKING TOWARDS TOMMY'S PARK



REAR ELEVATION



CONSIDERING VIEWING ANGLE AND TREES, DORMER IS VISIBLE IN THIS AREA

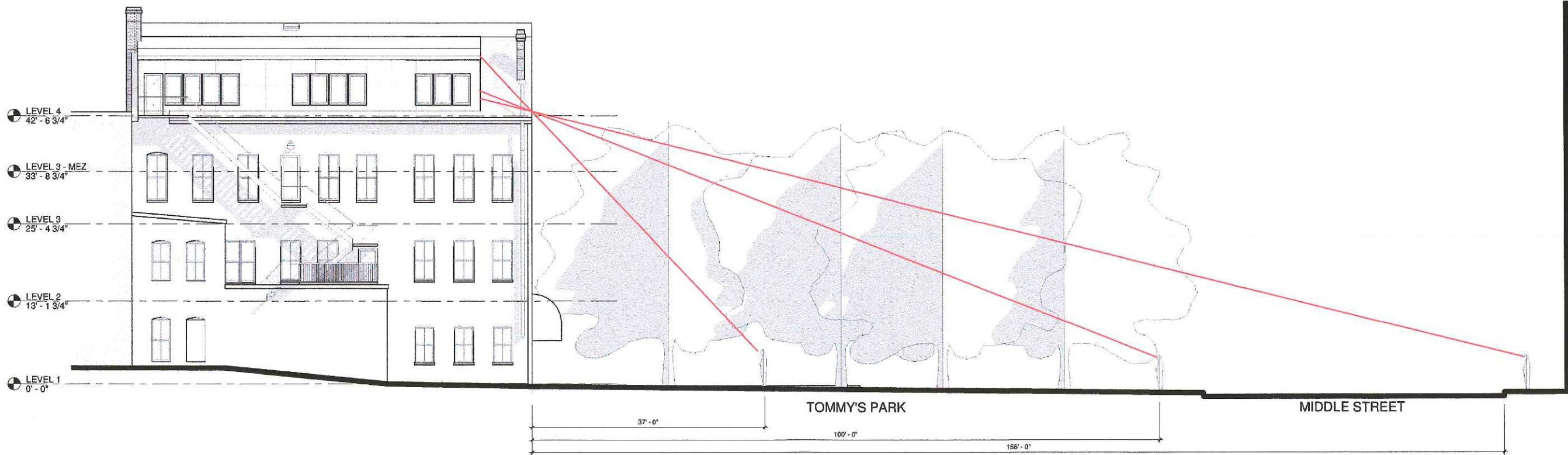
NOT FOR
CONSTRUCTION

80 EXCHANGE STREET
PORTLAND, MAINE
OFFICE RENOVATION

BRI BURN
architecture for life
(2) Reg. U.S. Pat. & Tm. Off. No. 100,000,000

CONSULTANTS:

② DORMER VISIBILITY
1" = 40'-0"



① REAR ELEVATION - DORMER VISIBILITY
1/8" = 1'-0"

REVISIONS:

No.	Name	Date

ISSUED: 9/12/17
PROJECT No: 1714
DRAWN BY: LG
CHECKED BY: Checker

SHEET TITLE:
DORMER
VISIBILITY

A210

