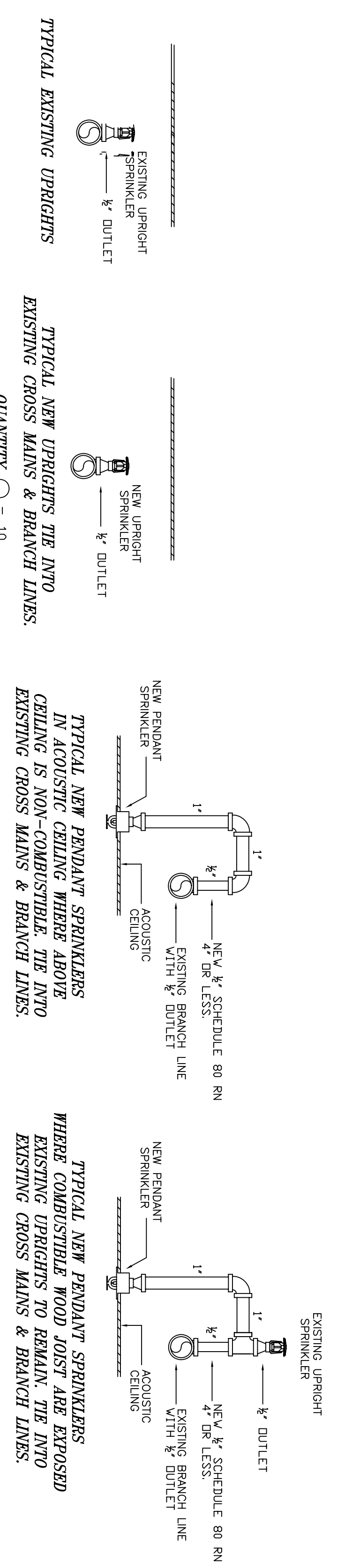
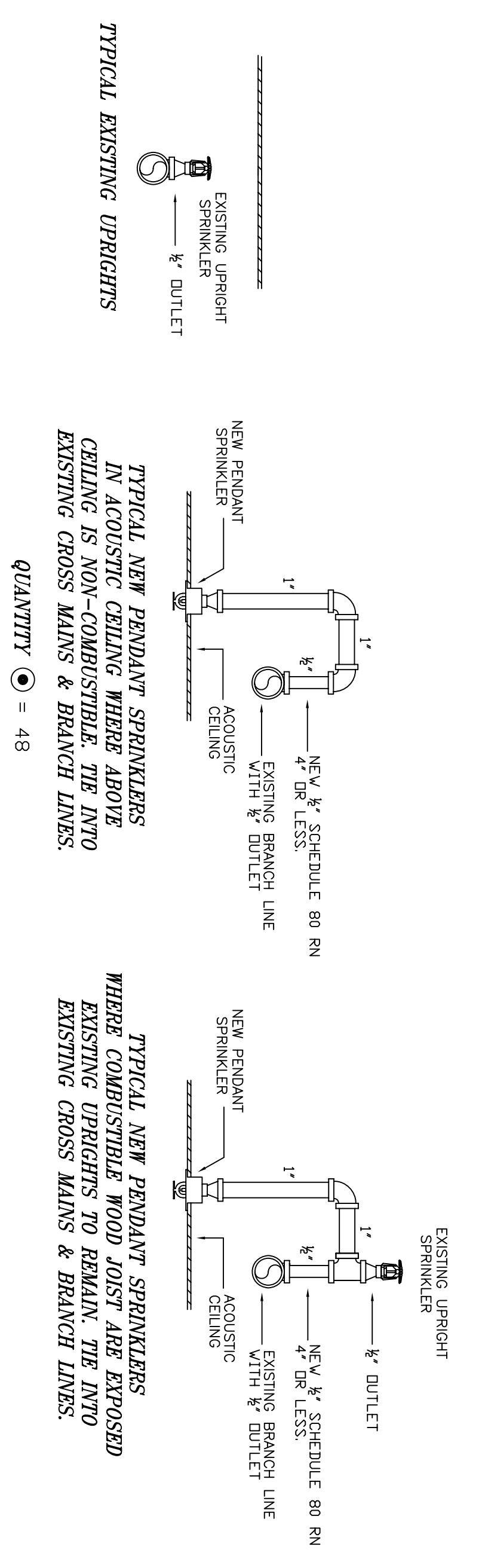


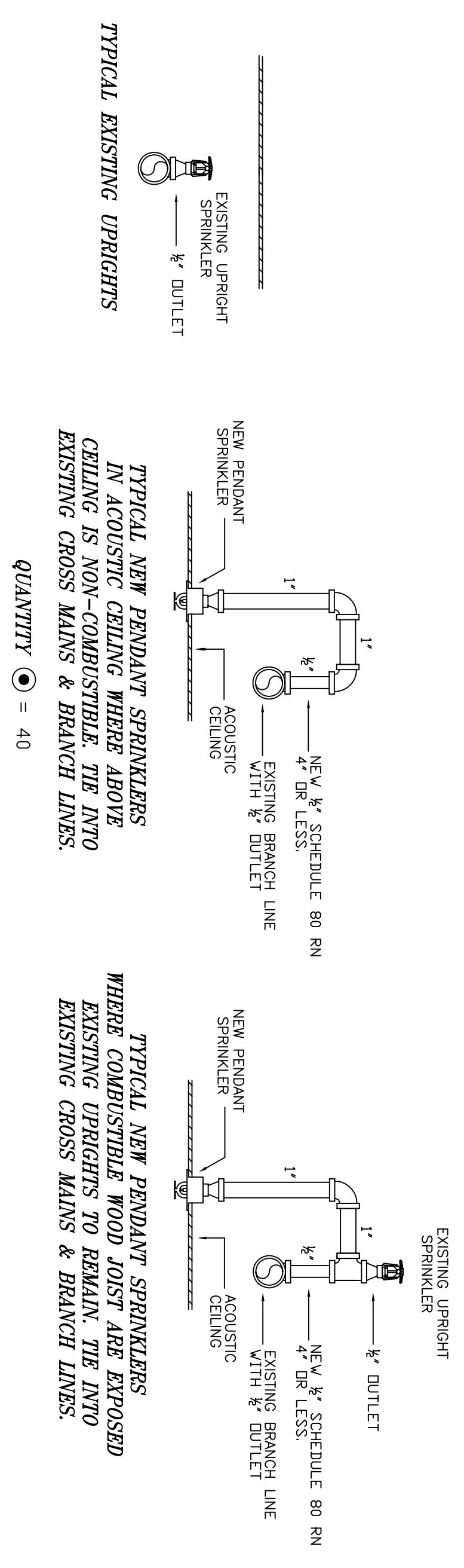
FOURTH FLOOR



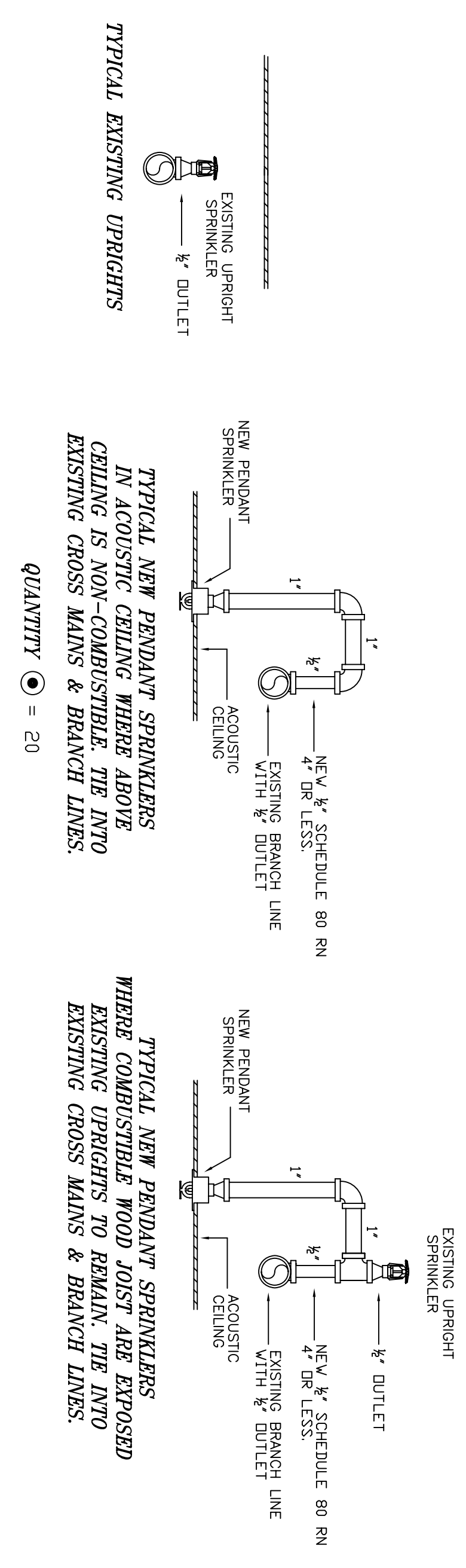
THIRD FLOOR



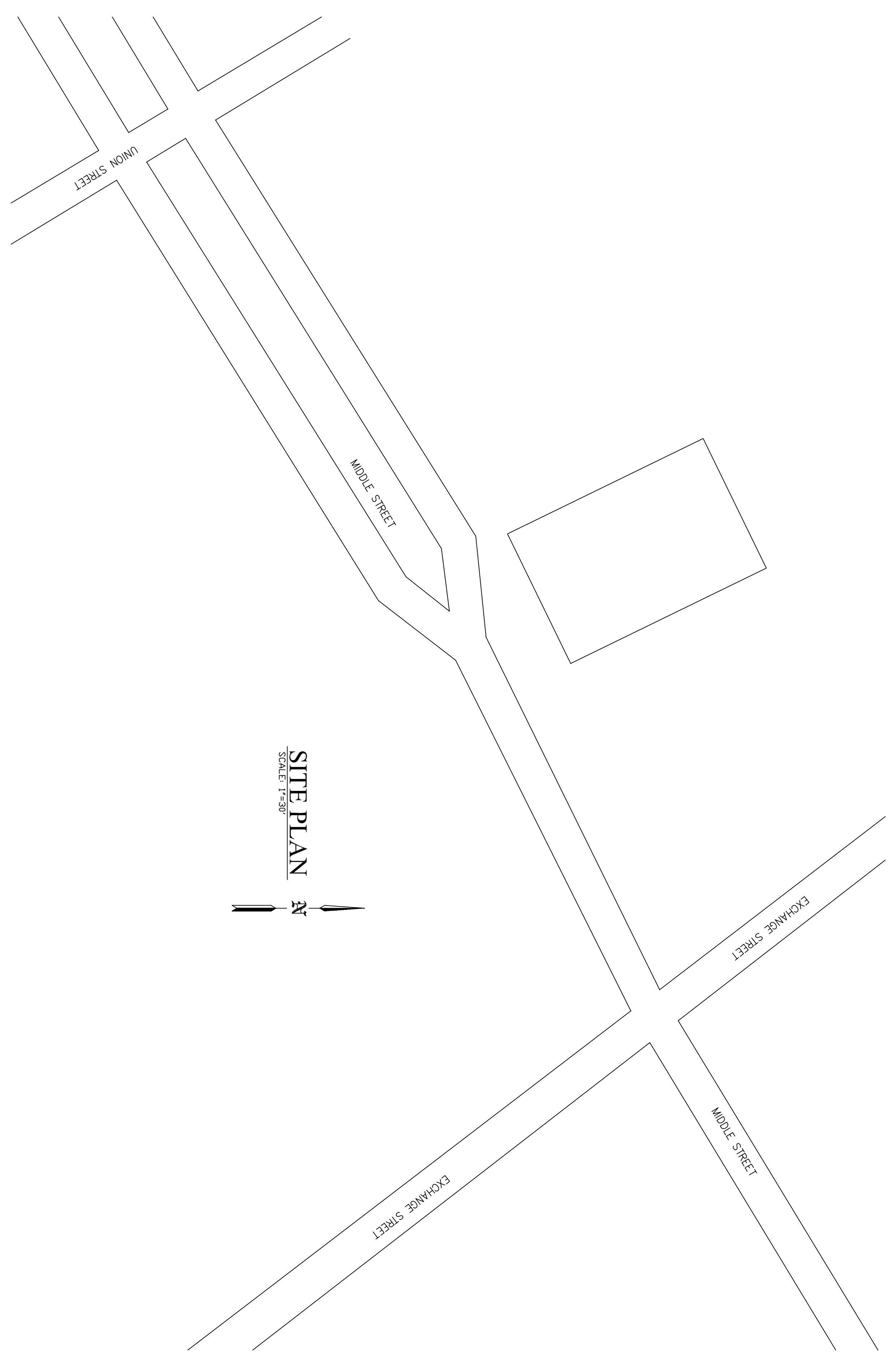
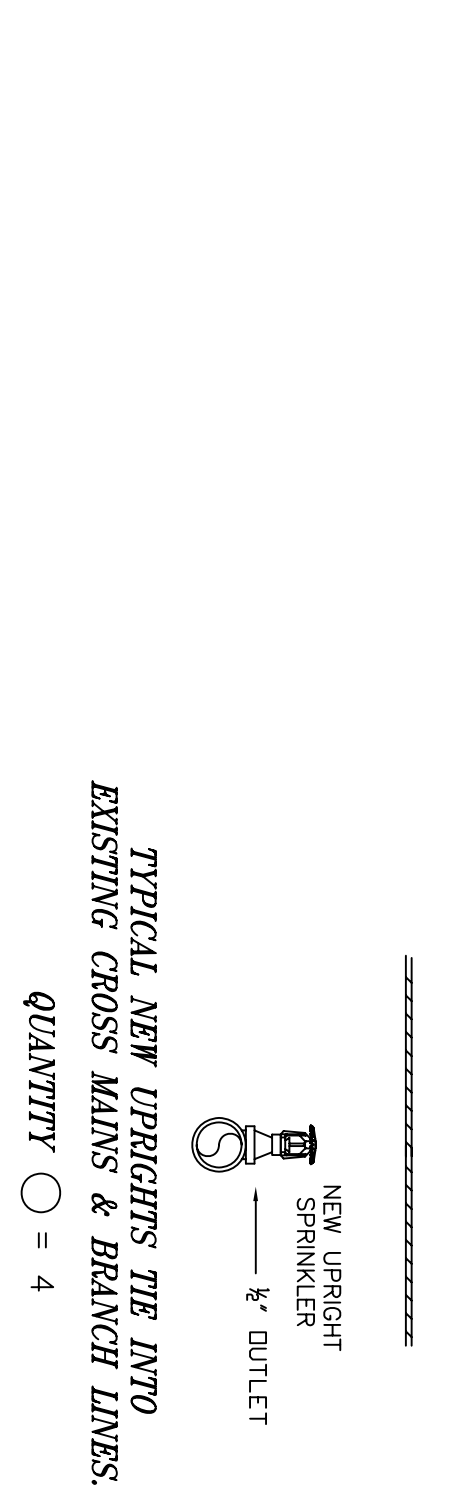
SECOND FLOOR



FIRST FLOOR



BASEMENT



FIRE SPRINKLER GENERAL NOTES

OCCUPANCY: BUSINESSES.  
 DESIGN STANDARD: NFPA-13 2010 LIGHT HAZARD  
 DESIGN DENSITY: NEW SPRINKLERS INSTALLED PER SCHEDULED SYSTEM.  
 SPRINKLERS UPRIGHT: TYCO (AS NOTED ON PLAN)  
 SPRINKLERS PENDENT: TYCO (AS NOTED ON PLAN)  
 ESCUTCHEONS: WHITE 2 PIECE SEMI-REC.  
 PIPING 1"-1 1/2" SCH. 40 STEEL.  
 HANGERS TO BE U.L. & FM APPROVED.  
 AND SPACED PER NFPA-13  
 REPLACE SPRINKLERS 50 YEARS OLD OR OLDER  
 WHERE ACCESSIBLE.

REVISIONS	NOTES	SPRINKLER TYPE	IDENTIFICATION NO.	WFG.	ESC.	MODEL	FINISH	ORIFICE	TEMP.	SYMBOL	QUANT.
	K-54 UPRIGHT & PENDANT SPRINKLER COVERED BY 1730	QUICK RESP. PENDANT K-54	T-9231	TTCB	N/A	TI-F-78	WHITE	1/2"	155°	○	14
		QUICK RESP. UPRIGHT K-54	T-9213	TTCB	N/A	TI-F-78	BRASS	1/2"	155°	○	14
											147
TOTAL SPRINKLERS THIS DRAWING											

STANDARD SYMBOLS	STANDARD SYMBOLS
<ul style="list-style-type: none"> <li>POST INDICATOR VALVE</li> <li>KEY VALVE</li> <li>FIRE INDICANT</li> <li>FIRE DEPT. CONNECTION</li> <li>O.S. &amp; Y GATE VALVE</li> <li>SWING CHECK VALVE</li> <li>NEW UNDERGROUND</li> <li>EXIST UNDERGROUND</li> </ul>	<ul style="list-style-type: none"> <li>ALARM CHECK VALVE</li> <li>RSBR W/ALARM VALVE</li> <li>RSBR W/DRY VALVE</li> <li>RSBR W/ELEC. FLOW SWITCH</li> <li>RSBR W/RELUCF VALVE</li> <li>WATER MOTOR VALVE</li> <li>TESTING BELL</li> <li>FLUSH FIRE DEPT. CONNECTION</li> </ul>

INSPECTIONS	JOB No.
1.	M0120
2.	DATE 5/14/13
3.	DRAWN BY MAN
4.	SCALE AS NOTED

80 EXCHANGE STREET  
 PORTLAND, MAINE 04101  
 FIRE PROTECTION PLAN  
 FREEDOM FIRE PROTECTION, INC.  
 209 QUAKER RIDGE ROAD  
 CASCO, MAINE 04015  
 SHEET No. FP-1 of 1