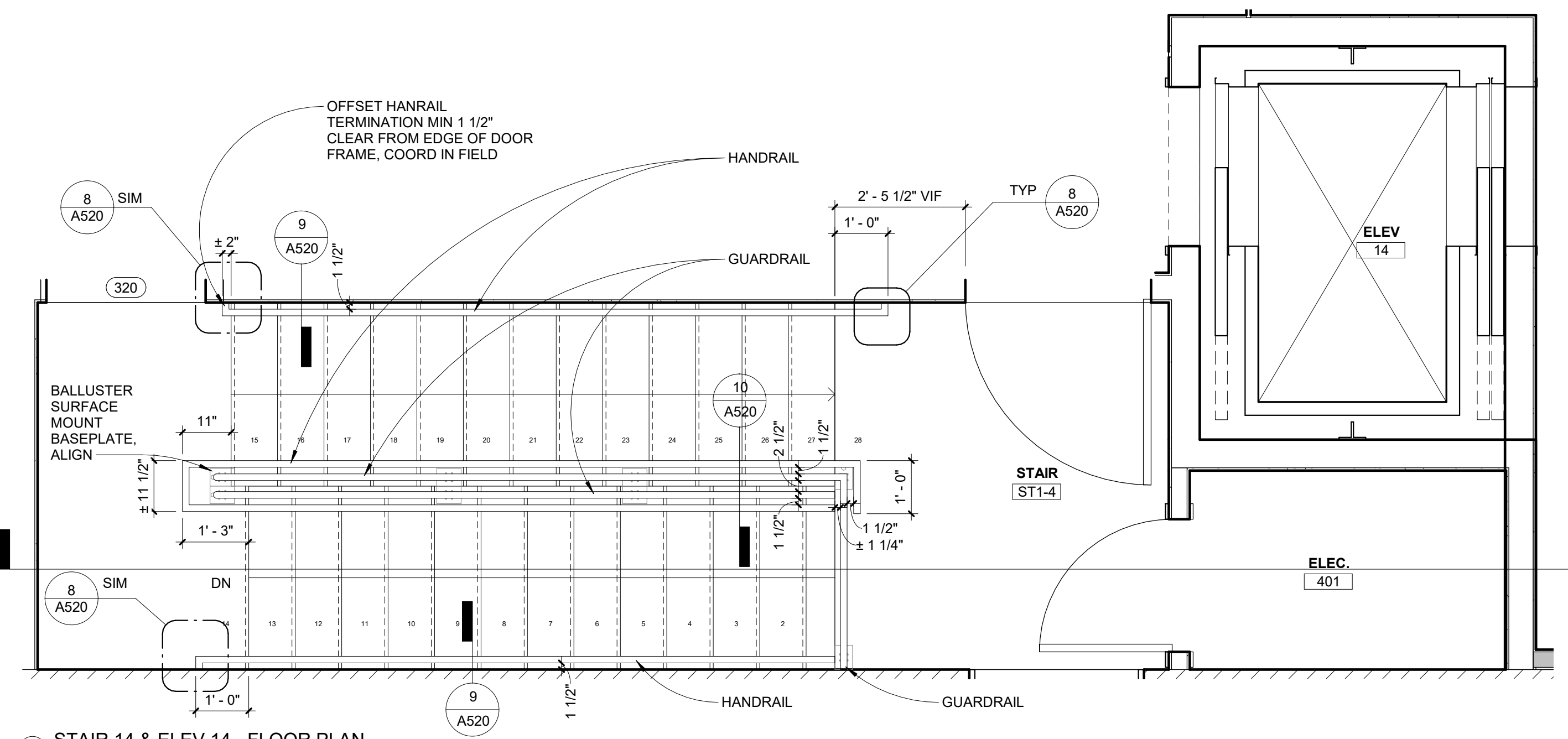
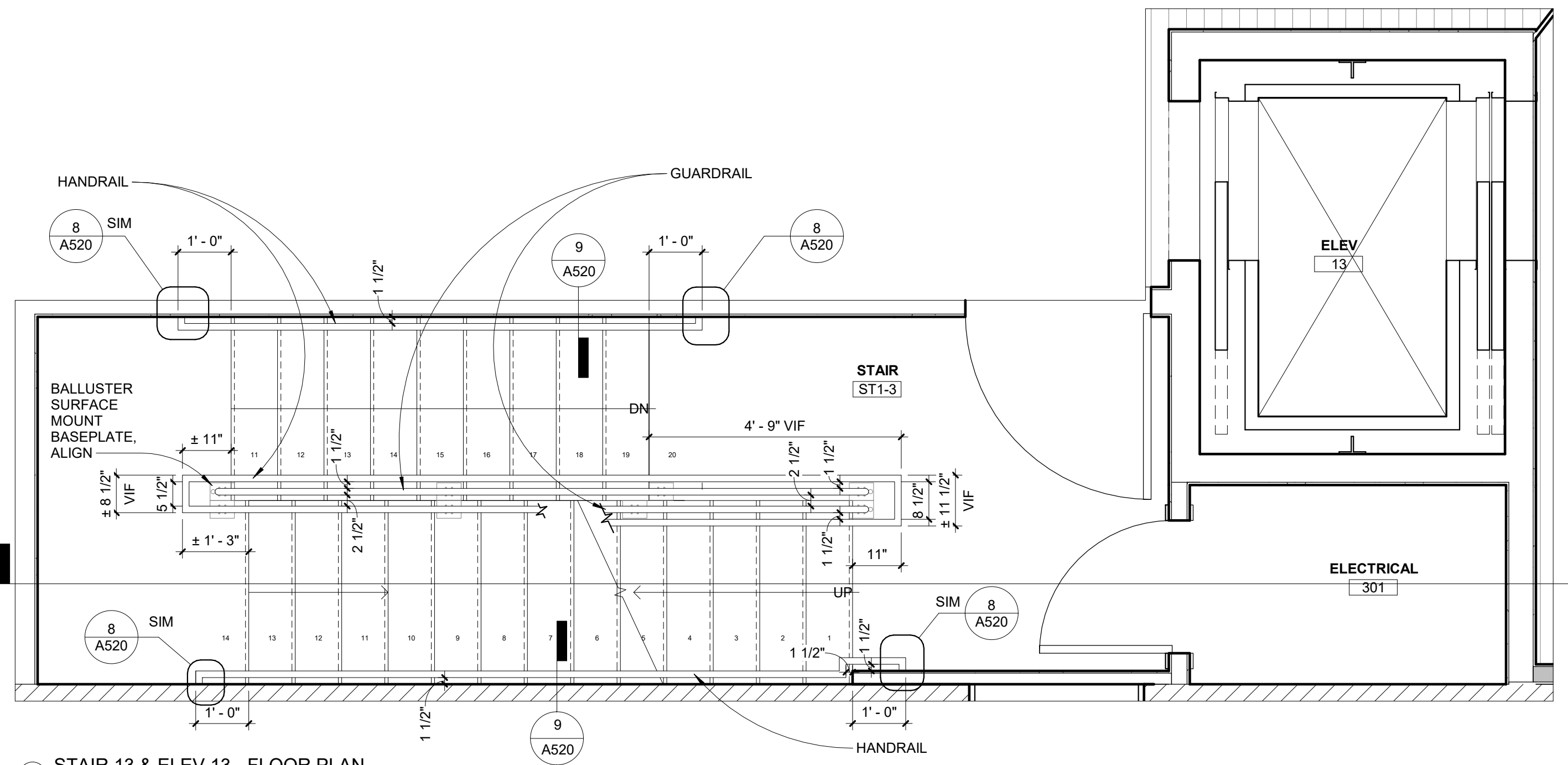


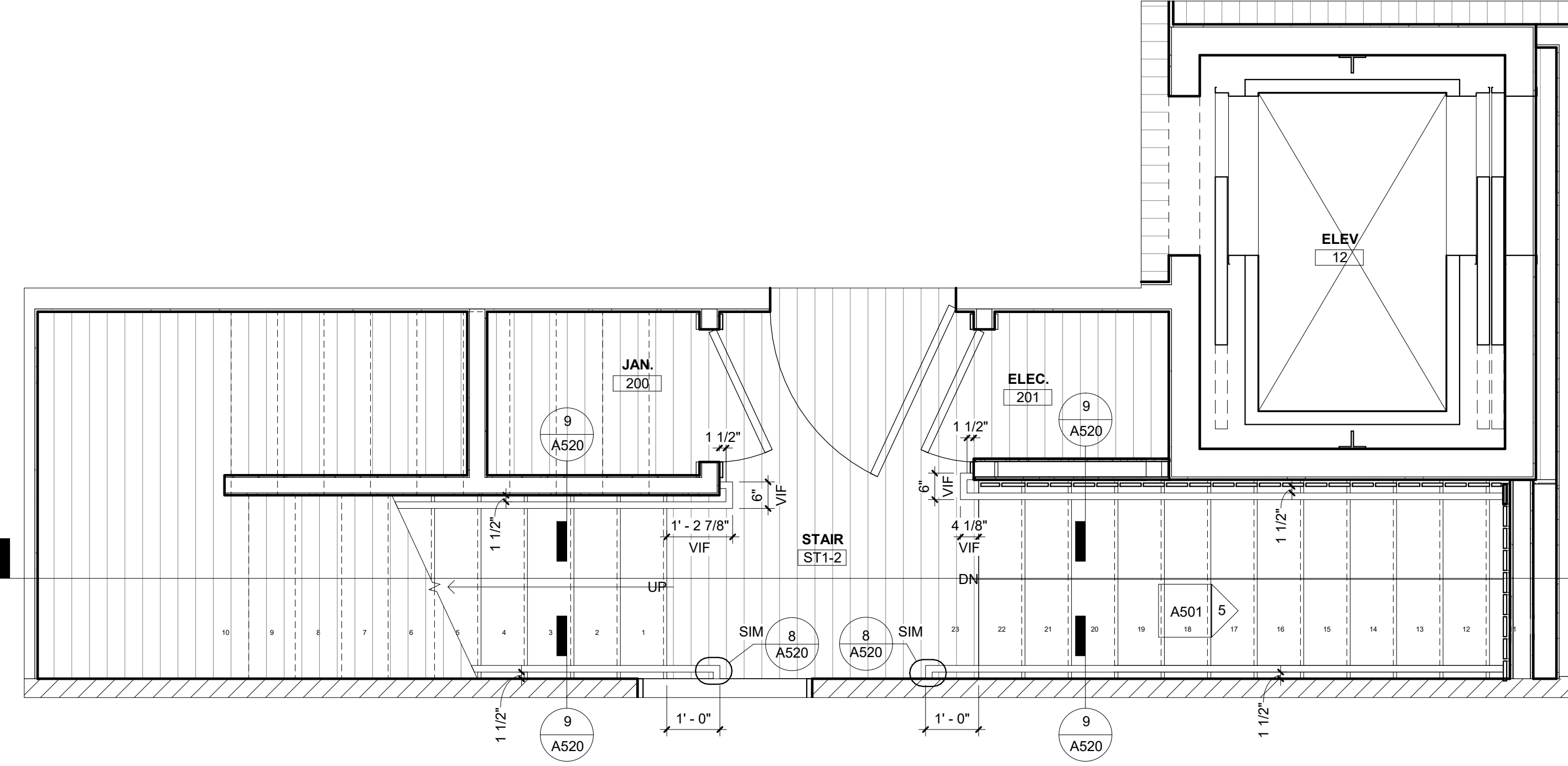
No.	Name	Date



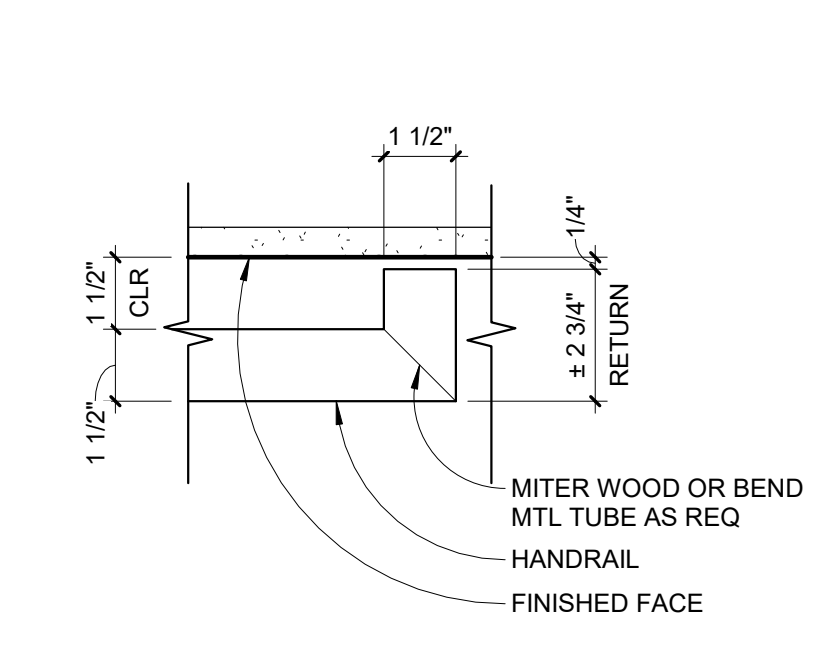
4 STAIR 14 & ELEV 14 - FLOOR PLAN
 1/2" = 1'-0"



3 STAIR 13 & ELEV 13 - FLOOR PLAN
 1/2" = 1'-0"



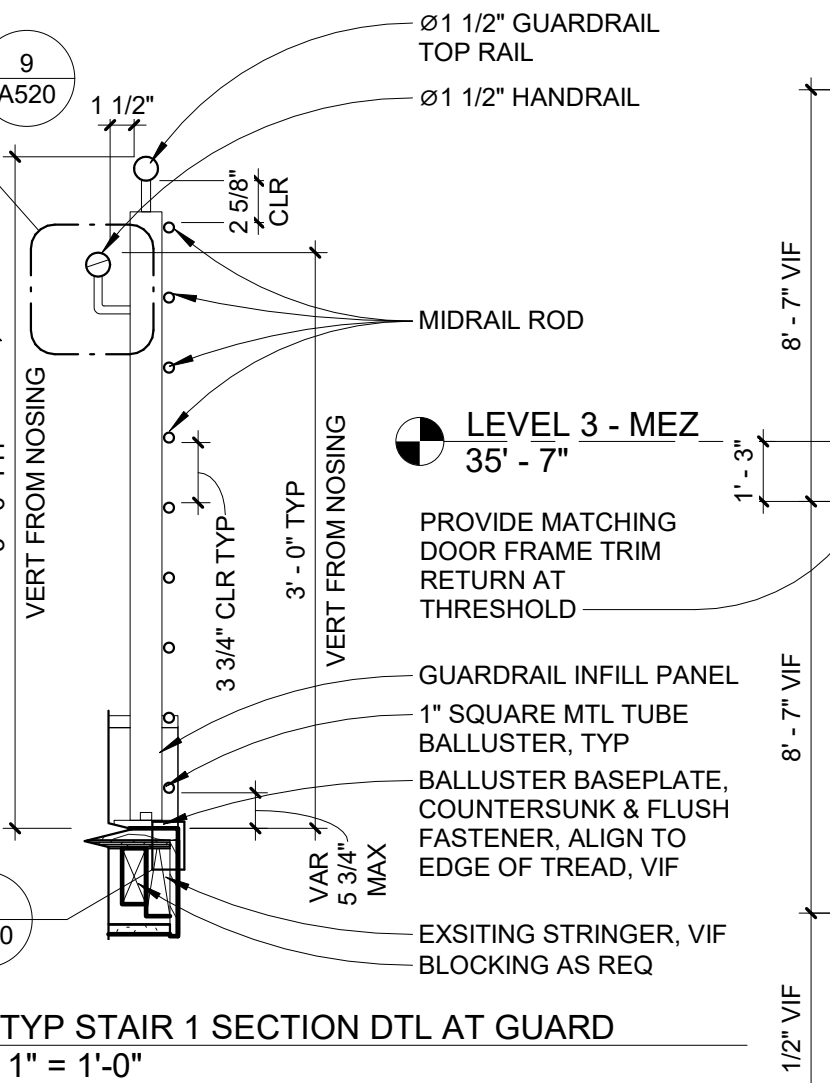
2 STAIR 12 & ELEV 12 - FLOOR PLAN
 1/2" = 1'-0"



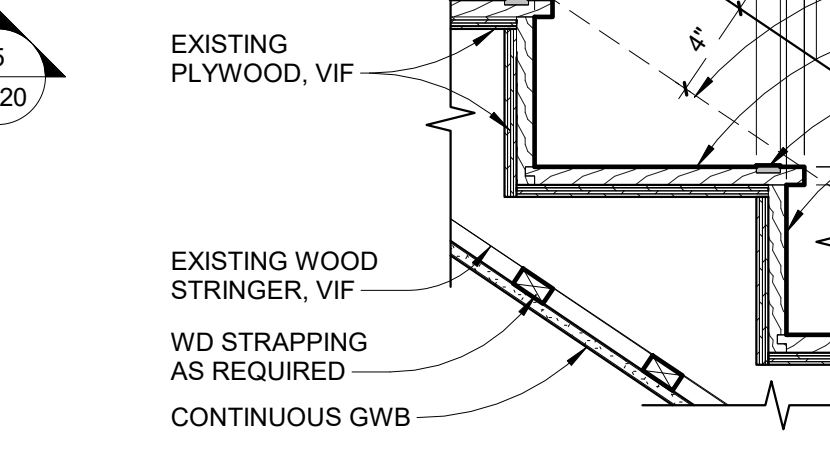
8 TYPICAL HANDRAIL TERMINATION
 3" = 1'-0"

GENERAL NOTES:

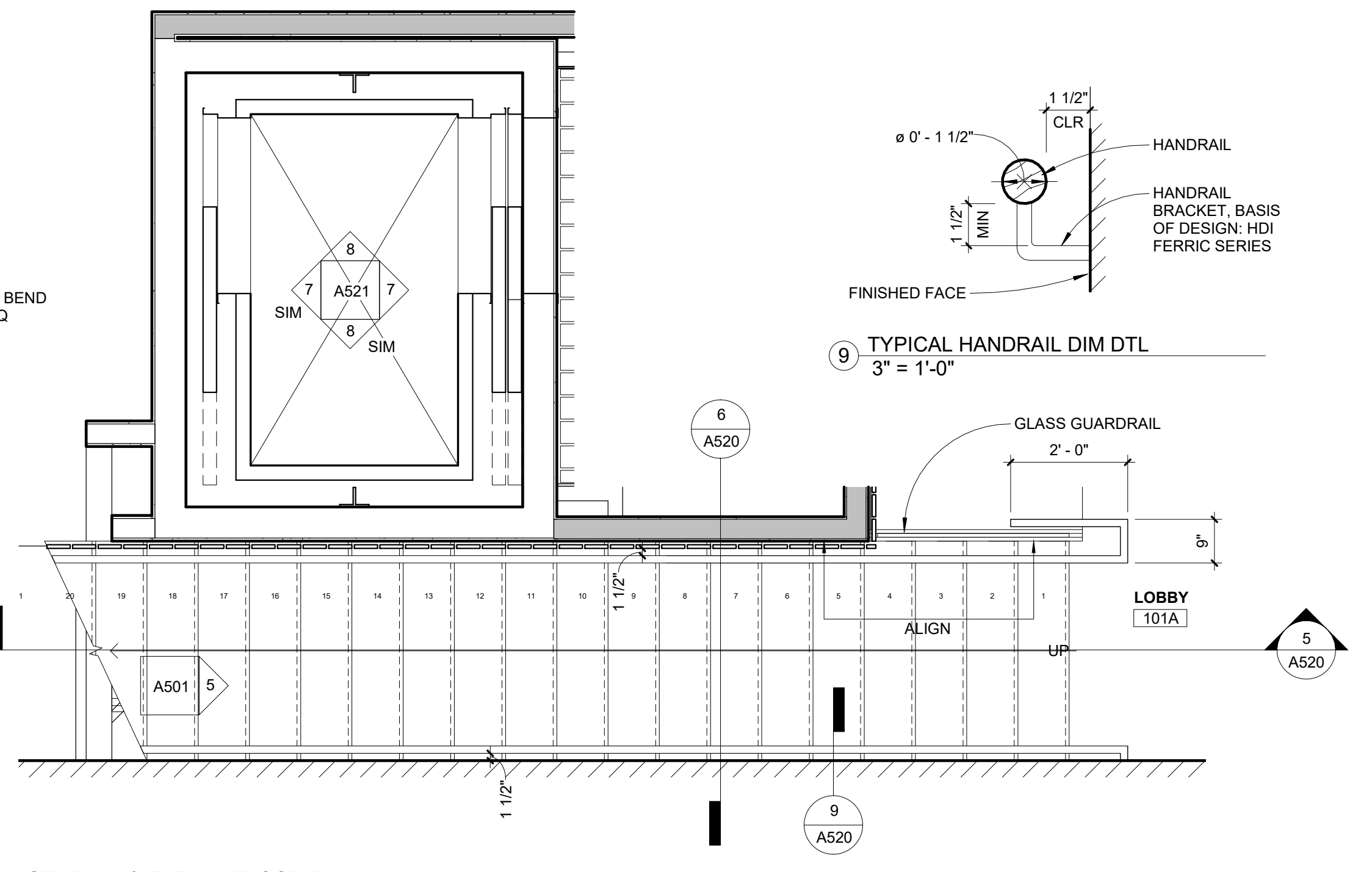
1. PROVIDE RAILING ASSEMBLIES IN CONFORMANCE WITH APPLICABLE CODES AND REGULATIONS.
2. TOP OF HANDRAIL TO BE 36" ABOVE LEADING EDGE OF TREAD NOSING, TYP.
3. TOP OF GUARDRAILS TO BE 42" ABOVE LEADING EDGE OF TREAD NOSING, TYP.
4. CONTRACTOR FIELD VERIFY DIMENSIONS AND NOTIFY ARCHITECT PRIOR TO COMMENCING WORK.
5. BALLUSTERS TO BE SURFACE MOUNTED TO TOP OF TREAD. PROVIDE BLOCKING AS REQUIRED PER MANUFACTURE.
6. ABREAST, MATCHING LEVEL BALLUSTERS TO BE CONNECTED WITH MANUFACTURE'S ACCESSORY CONNECTION WHERE APPLICABLE.
7. GUARDRAIL AND HANDRAIL SYSTEM BASIS OF DESIGN: HDI FERRIC MIDRAIL SURFACE MOUNT.



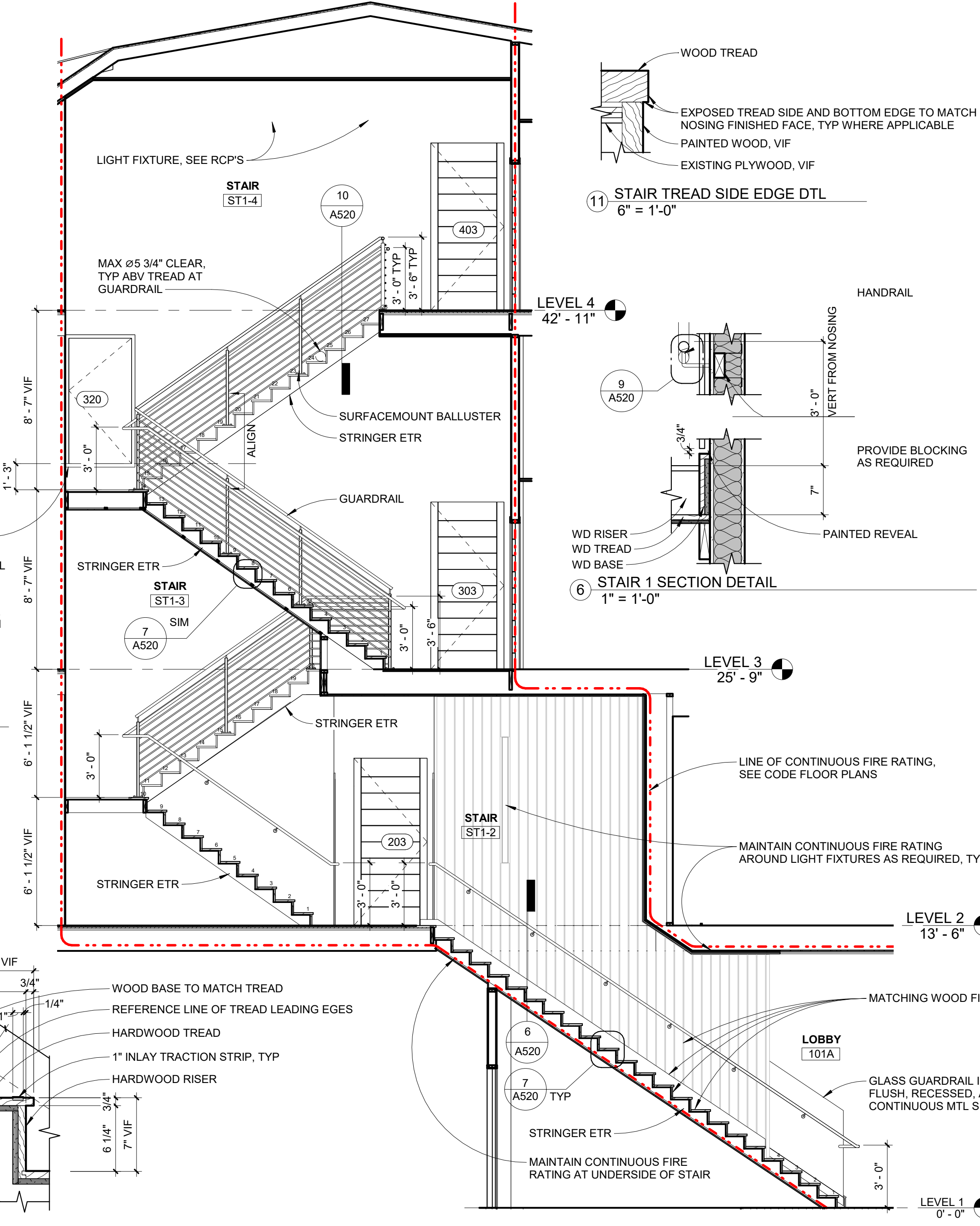
10 TYP STAIR 1 SECTION DTL AT GUARD
 1" = 1'-0"



7 STAIR 11 - TYPICAL SECTION DETAIL
 1 1/2" = 1'-0"



1 STAIR 11 & ELEV 11 FLOOR PLAN
 1/2" = 1'-0"



5 STAIR 1 SECTION
 1/4" = 1'-0"