

80 EXCHANGE STREET
PORTLAND, MAINE
OFFICE RENOVATION

BRBURN
architecture for life
20 Maple St. Suite 202 Portland, ME 04101 (207) 774-6862

CONSULTANTS:

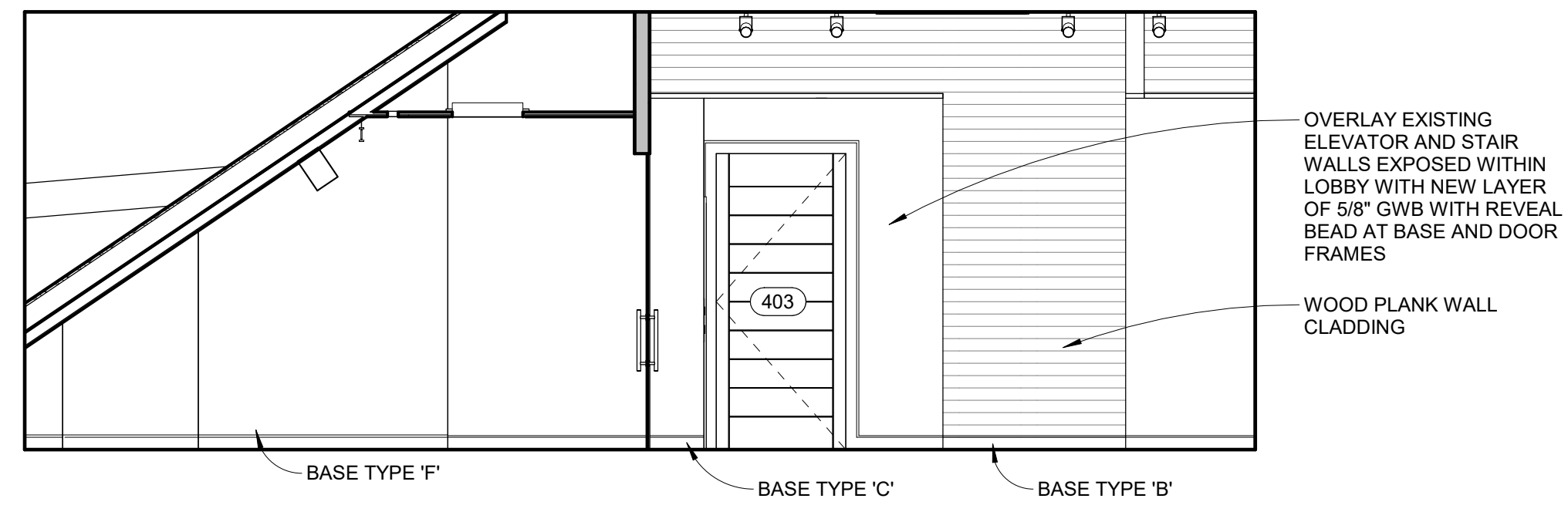
REVISIONS:

No.	Name	Date

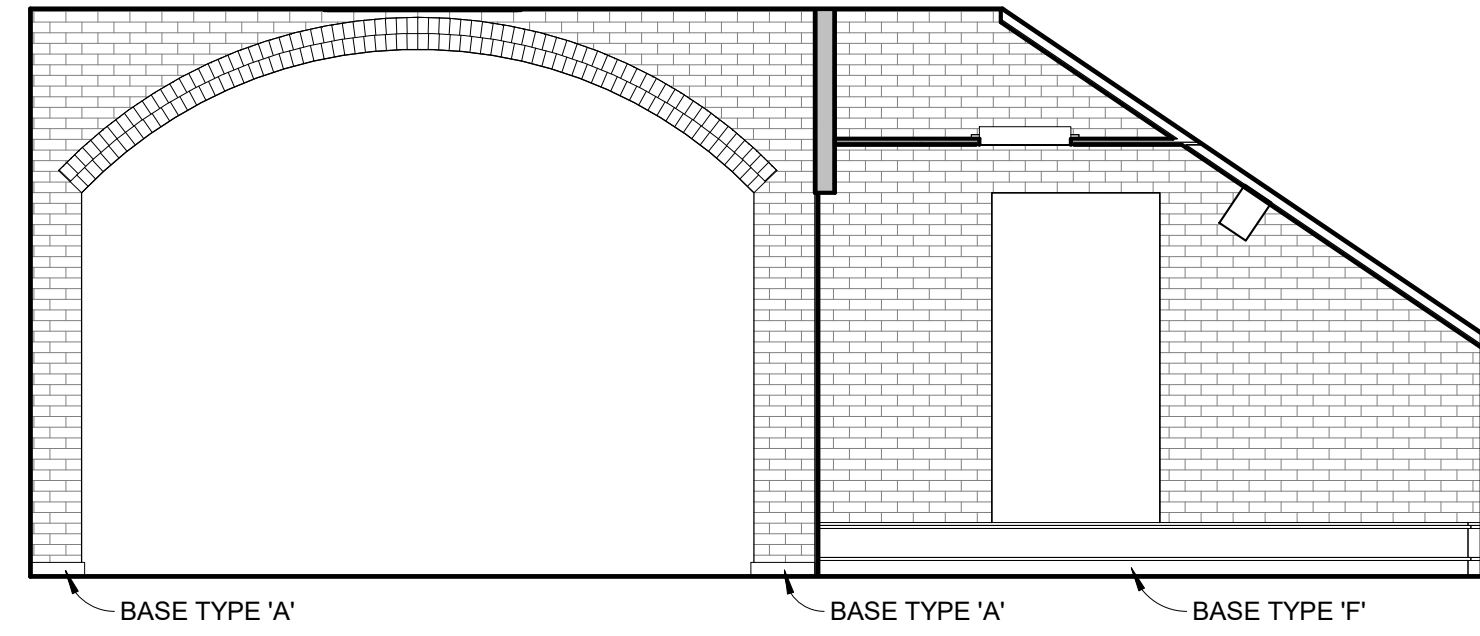
ISSUED FOR PERMITTING

ISSUED: 11/01/17
PROJECT No: 1714
DRAWN BY: RIP
CHECKED BY:
SHEET TITLE:
FOURTH FLOOR
INTERIOR
ELEVATIONS

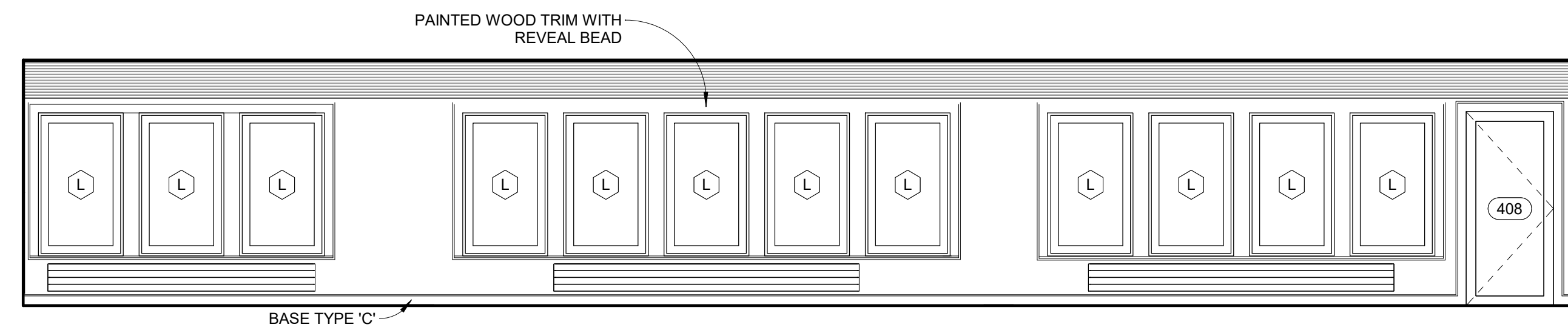
A512



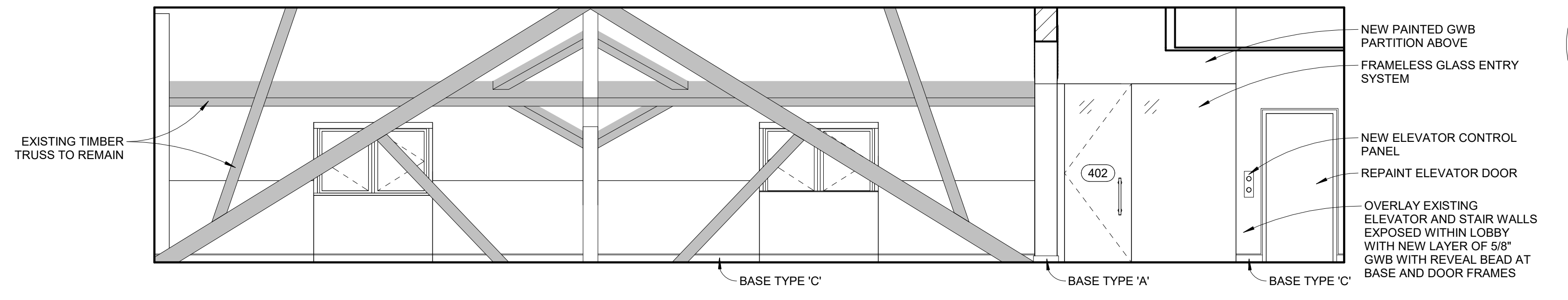
8 ROOM 402 & 403 SOUTH
1/4" = 1'-0"



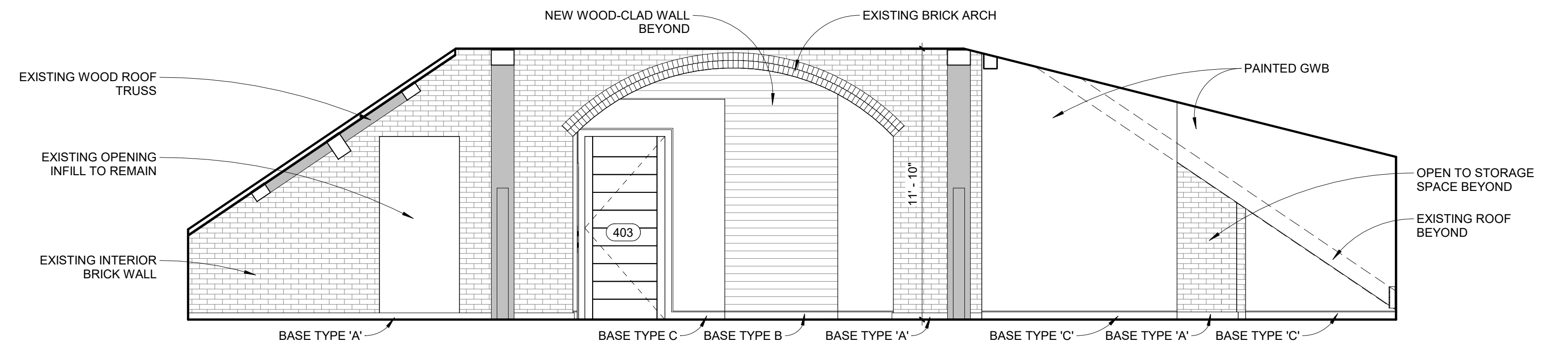
5 4TH FLOOR LOBBY NORTH
1/4" = 1'-0"



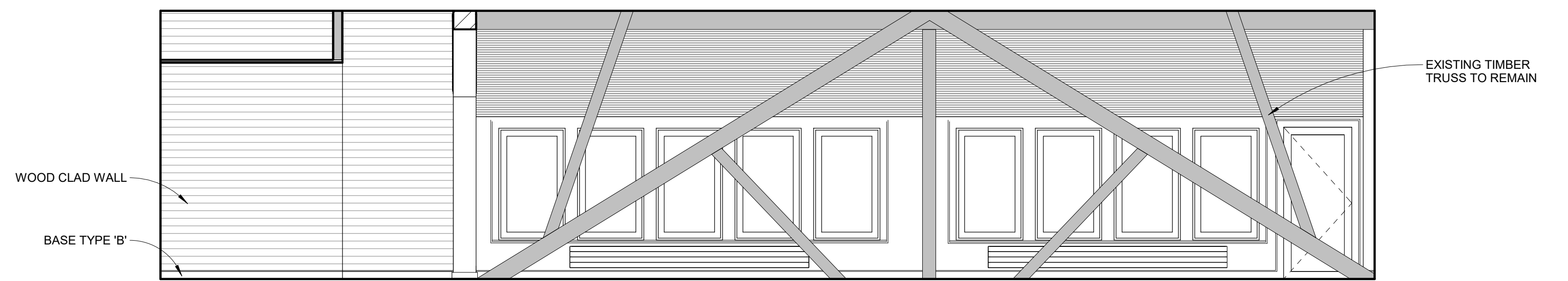
7 ROOM 408 WEST
1/4" = 1'-0"



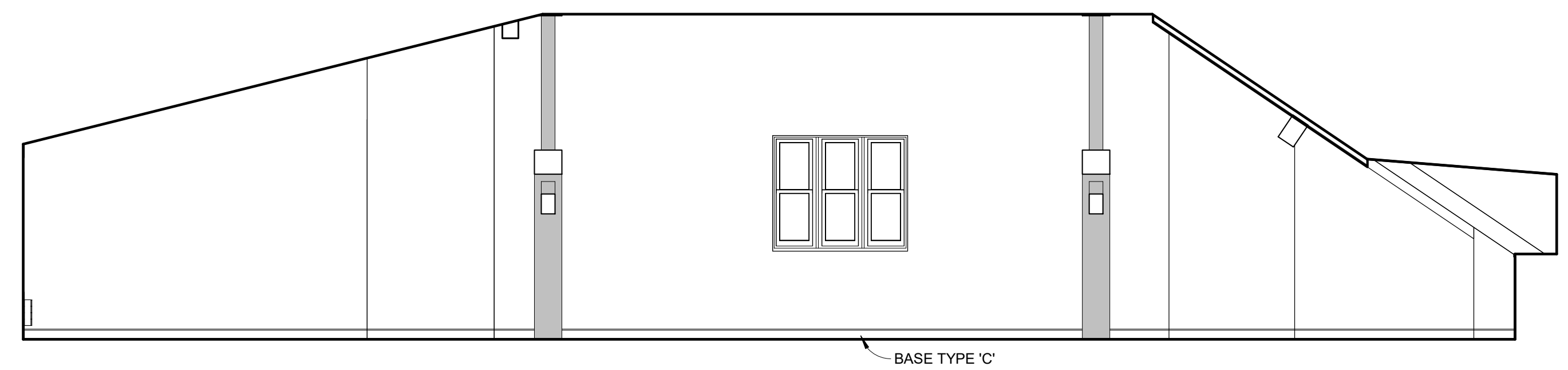
1 4TH FLOOR INTERIOR ELEVATION A
1/4" = 1'-0"



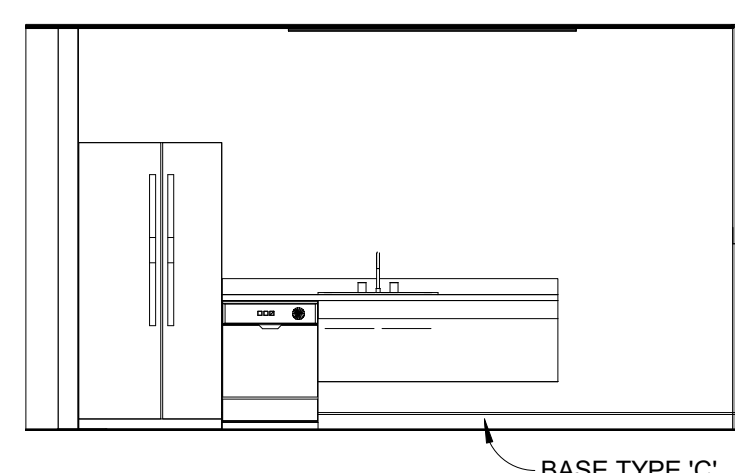
2 ROOM 408 SOUTH
1/4" = 1'-0"



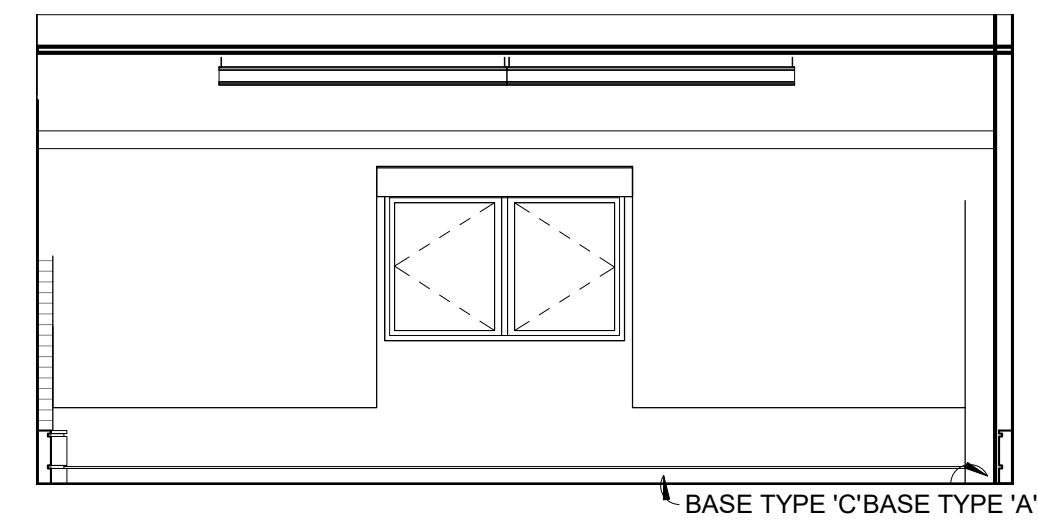
3 4TH FLOOR INTERIOR ELEVATION C
1/4" = 1'-0"



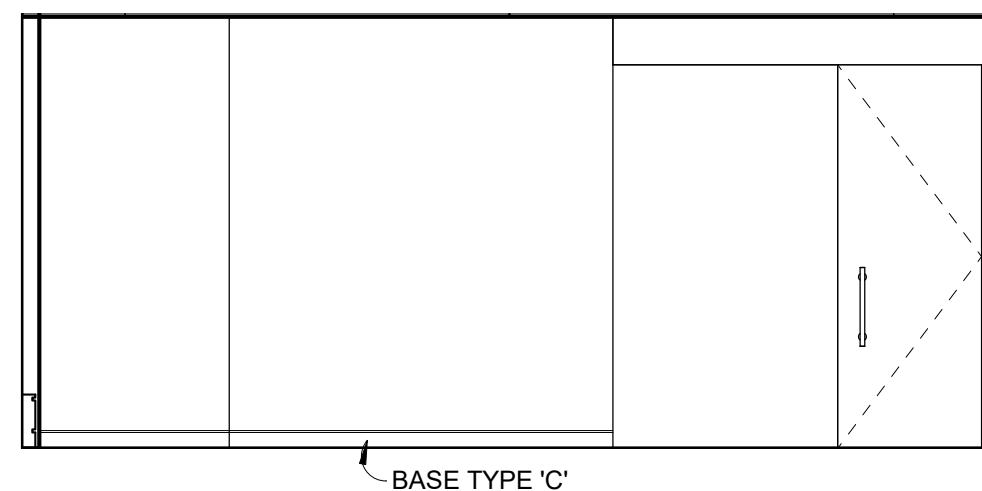
4 ROOM 408 NORTH
1/4" = 1'-0"



6 4TH FLOOR KITCHENETTE
1/4" = 1'-0"



10 4TH FLOOR EAST RM EAST
1/4" = 1'-0"



12 4TH FLOOR EAST RM WEST
1/4" = 1'-0"