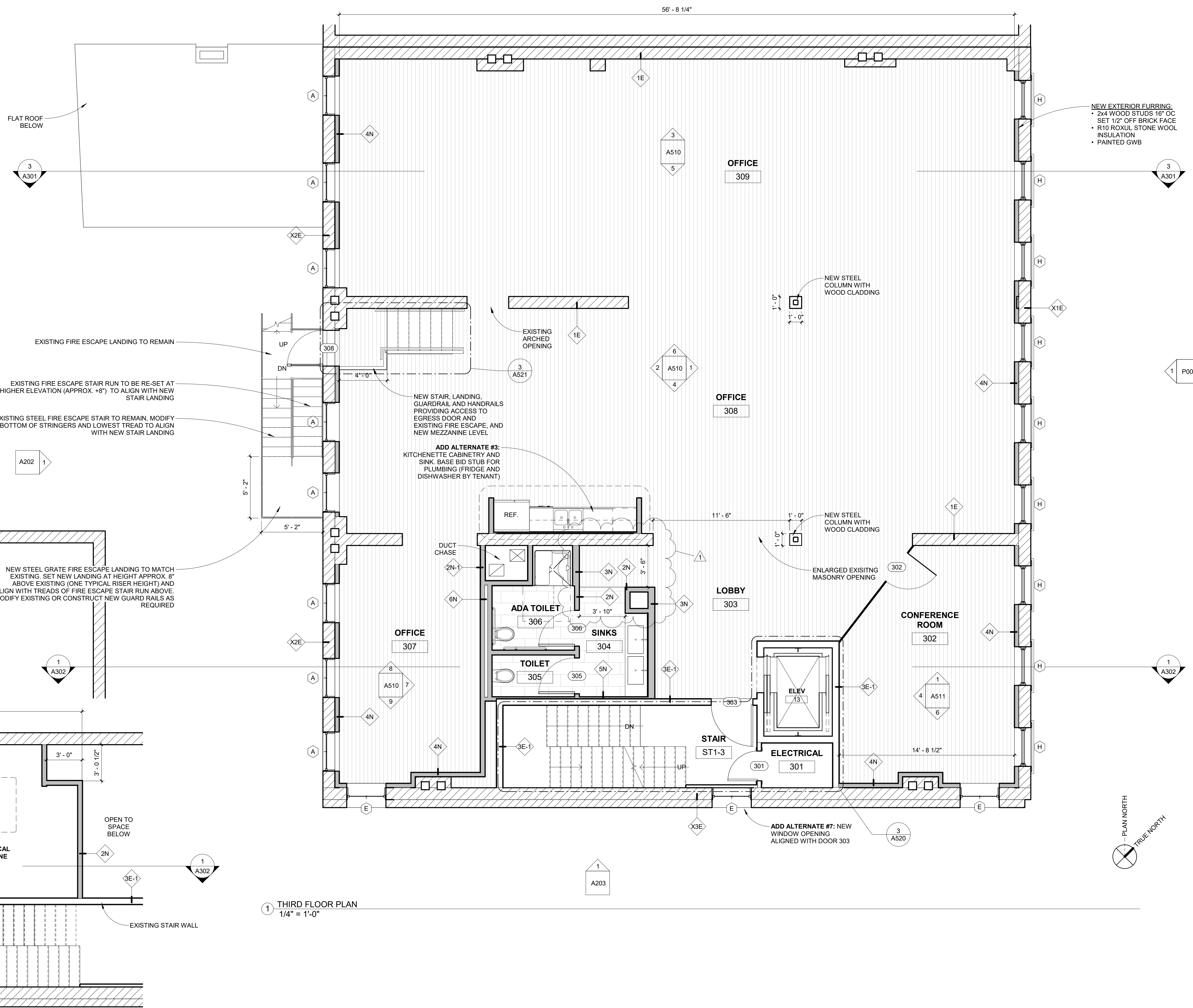


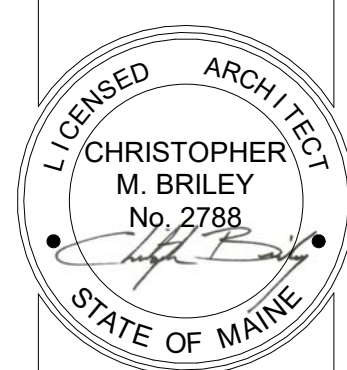
**GENERAL NOTES:**

- BUILDER TO VERIFY DIMENSIONS IN FIELD.
- ANNOTATED DIMENSIONS TO FACE OF FRAMING UNLESS NOTED OTHERWISE.
- PATCH AND PAINT WHERE REQUIRED, TYPICAL.
- TOUCHUP PAINT AT EXPOSED SPRINKLER PIPING AS REQ. VERIFY FIRE PROTECTION SPRINKLER PROVIDES COVERAGE IN COMPLIANCE WITH APPLICABLE CODES AND REGULATIONS. MODIFY EXISTING SPRINKLER AS REQUIRED.
- RELOCATED AND NEW DEVICES TO BE INSTALLED PER REQUIREMENTS OF APPLICABLE CODES AND REGULATIONS. VERIFY COMPLIANCE OF EXISTING DEVICES TO REMAIN PER SAID CODES AND REGULATIONS.
- COORDINATE FINAL LOCATIONS OF ELECTRICAL AND DATA SERVICE OUTLET LOCATIONS WITH TENANT AND OWNER.
- DOCUMENTS ARE PREPARED TO "PLAN NORTH." NOTE "PLAN NORTH" VARIES FROM TRUE AND MAGNETIC NORTH.
- MECHANICAL, PLUMBING, AND ELECTRICAL TO BE PROVIDED PER APPLICABLE CODES. CONTRACTOR IS TO SEEK APPLICABLE PLUMBING AND ELECTRICAL PERMITS AS REQUIRED BY AUTHORITIES HAVING JURISDICTION.
- RELOCATED SPRINKLER HEADS AND DEVICES SHALL BE CENTERED WITHIN ACT PANEL WHEREVER POSSIBLE.
- PREP, PATCH, AND PAINT EXISTING SURFACES TO REMAIN AND THOSE TO INDICATE TO RECEIVE PAINT.
- SEAL PENETRATIONS BETWEEN LEVELS AND INTO RATED ENCLOSURES (INCLUDING STAIRS) AS REQ.



1 THIRD FLOOR PLAN  
1/4" = 1'-0"

2 THIRD FLOOR MEZZANINE PLAN  
1/4" = 1'-0"



**80 EXCHANGE STREET**  
PORTLAND, MAINE  
OFFICE RENOVATION



**CONSULTANTS:**

**REVISIONS:**

No.	Name	Date
1	REV 1	1/5/18

**ISSUED FOR PERMITTING**

ISSUED: 11/01/17  
PROJECT No: 1714  
DRAWN BY: RIP  
CHECKED BY:  
SHEET TITLE:  
THIRD FLOOR PLAN

**A103**